

# TIFFIN

CLASS-C

# WAYFARER



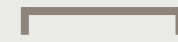
SEATS

4



SLEEPS

2



SIZE

25' 8"

# 25 XPW

Make your experience on the road all your own. Express yourself by choosing the interior appointments such as cabinet finishes, flooring, and décor ensembles for every part of your motorhome. The redesigned 2025 Wayfarer is featuring the tallest Class C ceiling in the United States. With an additional six inches of headroom, enjoy a more spacious and comfortable interior.

Exterior photo (Wayfarer 25 XRW) shown for illustrative purposes only.



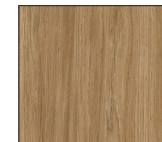
## FEATURES

- Mercedes-Benz® 3500XD Dual Wheel Cutaway Chassis
- Mercedes-Benz® 2.0-Liter I4 Turbo 208 HP Diesel Engine with 332 lb-ft Torque
- Mercedes-Benz® 9G-Tronic Automatic Transmission
- 220-Amp Alternator
- 4-Kilowatt RVMP Flex Power LP Generator
- 5,000 lb. Hitch Rating
- Hydronic Heating & Electronic Appliance Coach Option
- Hydraulic Leveling System with LCD Touchpad Controls
- Spyder Controls Multiplex System Featuring App Compatibility
- Stainless Steel Convection Microwave
- 200-Watt Solar Panel Option
- High Pressure Laminate Cabinetry Throughout Coach

## CABINETS NEW



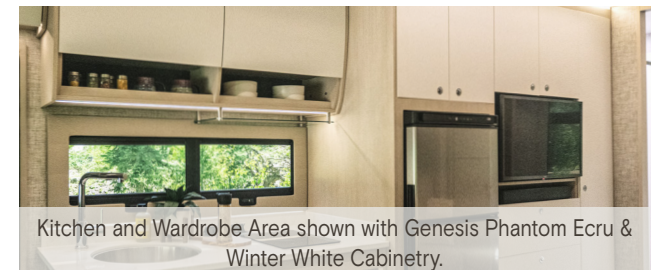
PHANTOM  
ECRU



GLISTERING  
TRAIL



WINTER WHITE ACCENT  
(STANDARD)



Kitchen and Wardrobe Area shown with Genesis Phantom Ecru & Winter White Cabinetry.

Wayfarer 25 XPW Floor Plan

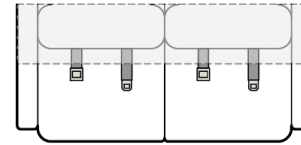
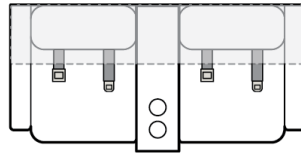
USE THE AREA BELOW TO ASSIST YOU DURING YOUR RV BUYING JOURNEY.

RATE YOUR WALK THROUGH RESPONSE FOR THIS FLOOR PLAN:

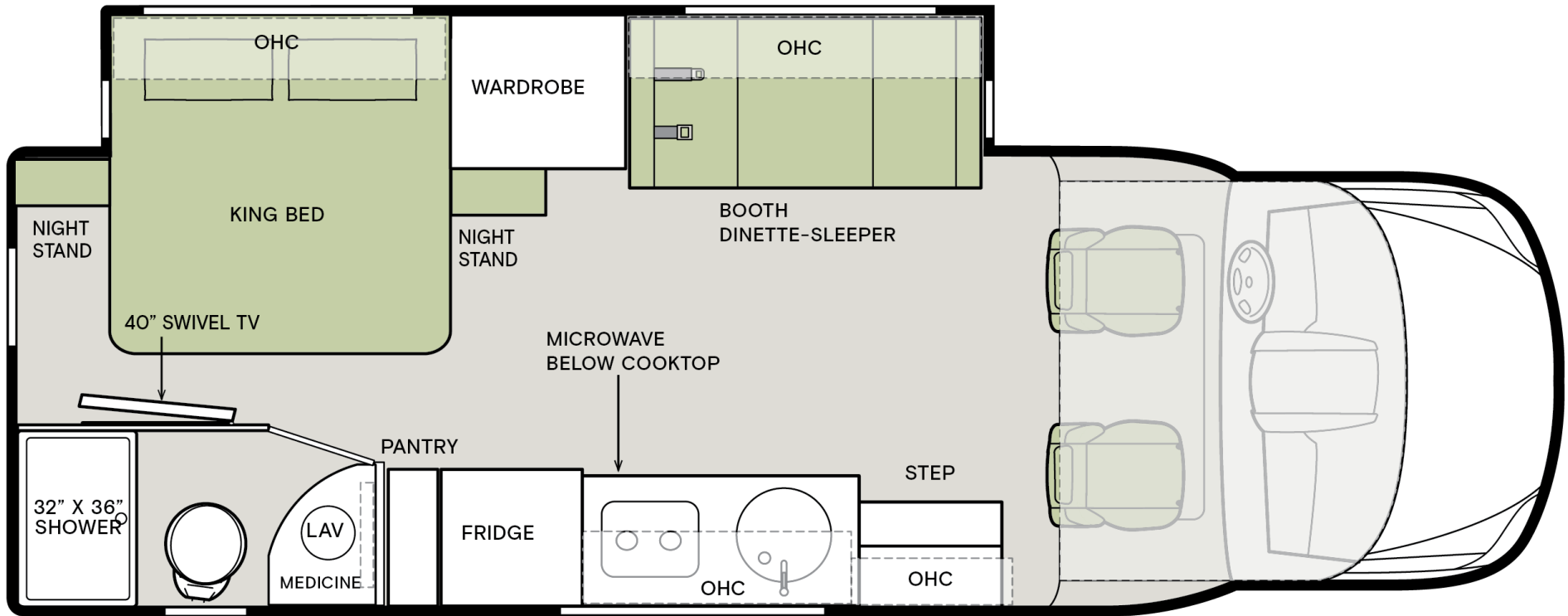
WOW FACTOR: 1 (NOT SO SPECIAL) - 5 (AWESOME)  
 1    2    3    4    5

NOTES: \_\_\_\_\_  
 \_\_\_\_\_  
 \_\_\_\_\_  
 \_\_\_\_\_

OPT. THEATER SEATING



OPT. SOFA WITH TRIFOLD HIDE-A-BED



If optional furniture combinations are selected, window locations may vary from diagram shown.

All options may not be available in every model. Because of progressive improvements and specifications, standard and optional equipment are subject to change without notice or obligation.

For a complete and up-to-date list of available options and specifications, visit [tiffinmotorhomes.com](http://tiffinmotorhomes.com).

FOR INSIDE SALES CALL 256-356-8661 OR VISIT [TIFFINMOTORHOMES.COM](http://TIFFINMOTORHOMES.COM)

105 2ND ST NW RED BAY, AL 35582



**TIFFIN**  
MOTORHOMES

All trademarks and logos are owned or used under license by Tiffin Motor Homes, Inc. and include, but are not limited to: TIFFIN®, MANY ADVENTURES. ONE DREAM.™, ALLEGRO®, ALLEGRO BREEZE®, ALLEGRO RED®, PHAETON®, ALLEGRO BUS®, ZEPHYR®, WAYFARER®, ROUGHING IT SMOOTHLY®, OPEN ROAD®, POWERGLIDE®, CAHABA®, BYWAY™, and associated logos and emblems. Unauthorized use of any trademark of Tiffin Motor Homes, Inc. is strictly prohibited.

© Copyright 2023 Tiffin Motor Homes, Inc.

For all information concerning the limited warranty provided by Tiffin, please refer to the full written limited warranty set forth on the Tiffin website or held by our authorized dealerships. Please note, some interior furnishings not included. Revised: 9/21/24