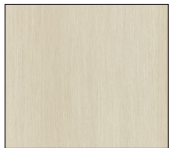


# WAYFARER

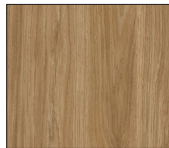
### Interior Décor

Make your experience on the road all your own. Express yourself by choosing the interior appointments such as cabinet finishes, flooring, and décor ensembles for every part of your motorhome. The 2026 Wayfarer features taller ceilings, giving you an additional six inches of headroom to enjoy a more spacious and comfortable interior.

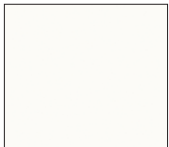
### HIGH PRESSURE LAMINATE CABINETS



PHANTOM  
ECRÚ



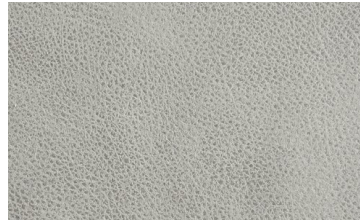
GLISTENING  
TRAIL



WINTER  
WHITE  
ACCENT

Images shown are representations of paint layouts only and do not reflect all exterior features or options. Colors shown may slightly differ from colors on actual product. Colors of interior decor options shown may vary from colors on actual product.

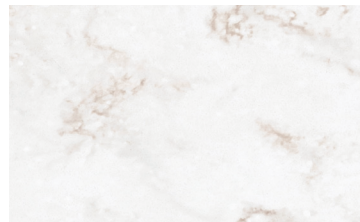
### SEDONA



FURNITURE



FLOORING

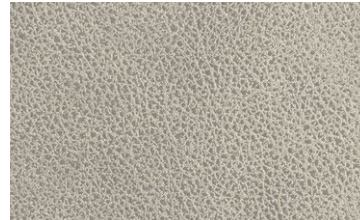


COUNTERTOP



MASTER SUITE

### GRANDVIEW



FURNITURE



FLOORING



COUNTERTOP



MASTER SUITE

### Premium Paint System Generation 7 Paint Schemes



G7 SILVER SAND



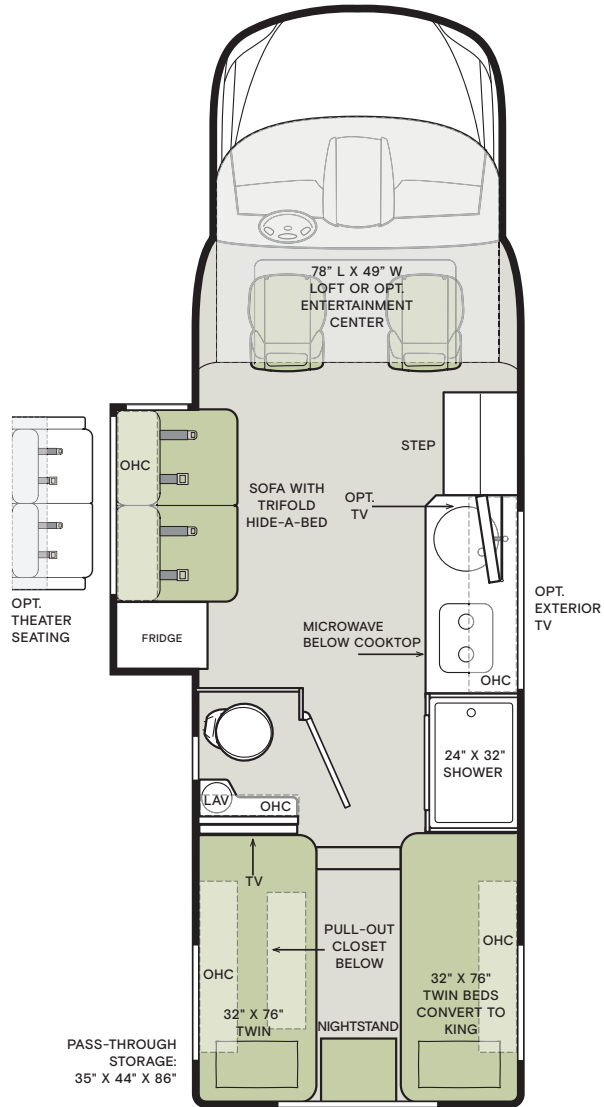
G7 COASTAL BLUE



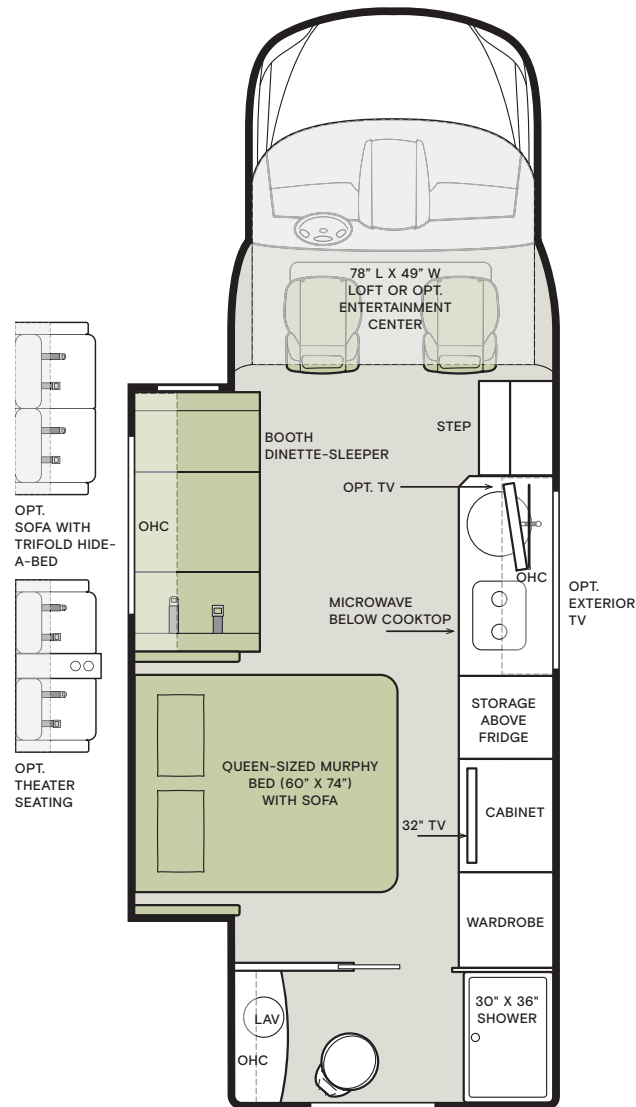
G7 SEA MIST

Floor Plans

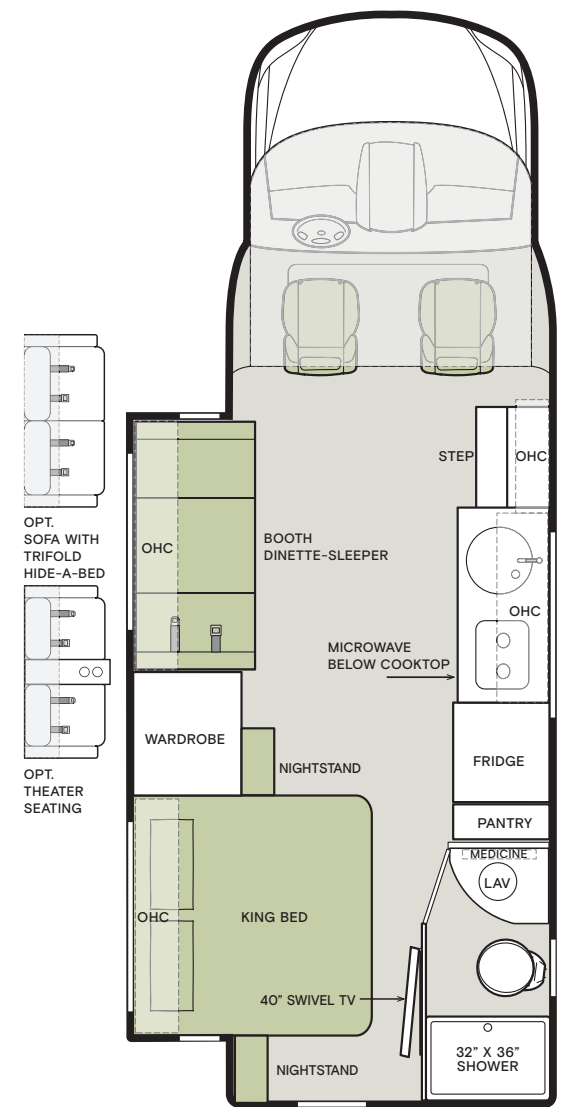
25 XLW



25 XRW



25 XPW



FOR SALES CALL 256-356-8661 AND PARTS & SERVICE CALL 256-356-0261 OR VISIT [TIFFINMOTORHOMES.COM](http://TIFFINMOTORHOMES.COM)

105 2ND ST NW RED BAY, AL 35582  



**TIFFIN**

MOTORHOMES

All trademarks and logos are owned or used under license by Tiffin Motor Homes, Inc. and include, but are not limited to: TIFFIN®, MANY ADVENTURES, ONE DREAM™, ALLEGRO®, ALLEGRO BREEZE®, ALLEGRO RED®, PHAETON®, ALLEGRO BUS®, ZEPHYR®, WAYFARER®, ROUGHING IT SMOOTHLY®, OPEN ROAD®, BYWAY™, and associated logos and emblems. Unauthorized use of any trademark of Tiffin Motor Homes, Inc. is strictly prohibited.

© Copyright 2025 Tiffin Motor Homes, Inc.

For all information concerning the limited warranty provided by Tiffin, please refer to the full written limited warranty set forth on the Tiffin website or held by our authorized dealerships. Please note, some interior furnishings not included. Revised: 2.12.25