

ROUGHING IT

Smoothly®

Brought to You by
Tiffin Motorhomes

Spring 2024 • Volume 21, No. 2

Tiffin GH1
Go Off the
Grid in Style



BIG CITY FUN

Explore St. Louis and Long Island

TOUR NATIONAL PARKS

Utah Mighty 5 - Denali

**ALSO
INSIDE:**
The Class C
Wayfarer

FREIGHTLINER

Custom Chassis

Driven By You

IT'S FOR EVERYONE

A NEW CATEGORY IN CLASS A RV SUSPENSION SYSTEMS.



The new V-Series Suspension System from Freightliner Custom Chassis unites the proven V-Ride rear suspension with a dynamic new VFS front suspension to deliver front-to-back stability, responsiveness and comfort that rivals luxury motorhomes with IFS. V-Series brings premium handling and stability; and safer, controlled braking to a wider range of coaches in the Class A market.

With V-Series, Class A diesel further establishes itself as the best experience in RVing with the most loyal and satisfied owners. From first-time adventurers to well-traveled road veterans, V-Series on the XC chassis makes the ultimate Class A ride and drive accessible to everyone.

V-SERIES TUNES AND BALANCES THE NEW VFS FRONT SUSPENSION WITH THE LEGENDARY V-RIDE REAR SUSPENSION



To learn more or to find your coach with the V-Series Suspension System, visit FCCCRV.com/vseries.



Family Ties

Family is always important, but when you work at a family business like Tiffin Motorhomes, it's vital to keep familial relationships solid and communications clear and concise. I have been blessed to work alongside and learn from my grandfather, father, uncles, siblings and cousins. We are teeming with Tiffins — or I should say, teaming with Tiffins because on top of being family, we are also a team with the same goals.

One of our top goals is to ensure that owners of Tiffin motorhomes feel safe as they traverse across this great land of ours. However, we want to be more than just a technical resource for owners, we want to connect with them. The network of owners that we meet and interact with at rallies, shows and here at our headquarters in Red Bay, Alabama, is truly like family to us.

In January, my wife, Baylee, and I met with a group of Tiffin Breeze owners in Florida (see page 16). What an absolute joy it was to talk to people and hear about the friendships they have forged, their travels, how they have decked out their Breezes and more. It's a wonder to see how folks whose first commonality was owning the same model of motorhome have connected on so many levels — their fun and adventuresome spirit to take every side road and back road that they come upon, their yearning to see every corner of the U.S. and their practicality of traveling by RV.

I feel this same sense of awe every time I meet with a group of Tiffin owners — it's really a highlight of my job. In the coming months, I look forward to attending the rallies in Auburndale, Florida, and Larkspur, Colorado. I hope to see you there, so we can talk RVs, travel, life and family!

Best,
Leigh Tiffin
President, Tiffin Motorhomes

ROUGHING IT Smoothly®

Brought to You by
Tiffin Motorhomes

SPRING 2024 • VOL. 21, NO. 2

Editor

June Kikuchi

RoughingItSmoothlymag@outlook.com

Art Director

Cindy Kassebaum

Publisher

Bob McIlwain
NPS Media Group

bmcilwain@npsmediagroup.com

Director of Magazine Operations

Lisa Smith

lisa.smith@tiffinmotorhomes.com

Contributing Writers:

Steve Blume, Scott Fox, Kellie B. Gormly,
Steve Hutton, Melissa L. Kauffman,
Nicole Sipe, Lisa Smith,
Kathryn Drury Wagner

Roughing It Smoothly® magazine (ISSN 2472-3770) is published four times a year by NPS Media Group for Tiffin Motorhomes, Inc., 105 2nd Street NW, Red Bay, Alabama 35582. NPS offices are located at 2 Enterprise Drive, Suite 420, Shelton CT 06484.

Copyright © 2024 by Tiffin Motorhomes. All rights reserved. Roughing It Smoothly® is a registered trademark of Tiffin Motorhomes, Inc. No part of this magazine may be reproduced in any form without the written permission of the publisher, editor and Tiffin Motorhomes, Inc.



This issue's cover features the all-new Tiffin GH1. Read more about it on page 50. Photo courtesy of Tiffin Motorhomes.

table of contents

ROUGHING IT SMOOTHLY • VOL. 21, NO. 2

Features

34 **Classy Class C**

The Tiffin Wayfarer 25 LW is a sleek, modern and aerodynamic luxury motorhome with a smaller footprint.

42 **Meet Me in St. Louis**

A world of adventure awaits in this Midwest city considered to be the “Gateway to the West.”

50 **A Versatile Adventure Van**

Go off-road with all the comforts of home with the powerful Tiffin GH1.

58 **Longing for Long Island**

Just east of New York City, you can dive into history, fun, memorials and more — and you’re always near the water.

66 **A Mighty Utah Excursion**

With proper planning, you can enjoy a breathtaking tour of the Utah Mighty 5 — Arches, Bryce Canyon, Canyonlands, Capitol Reef and Zion National Parks.

72 **Our Denali Quest**

A couple on a six-year, RV adventure traveled to Alaska in hopes of viewing Denali, the highest mountain peak in North America.

Columns and Departments

1 **President's Corner**

4 **News You Can Use**

10 **Say No to Allergies**

12 **Allegro Club News**

14 **Tiffin Rally News**

Tiffin Breeze Owners Rally

18 **Wellness on the Road**

Keep work and life separate(ish) while traveling.

22 **Owner Profile**

Kim Seager started the Tiffin Check In Facebook group so Tiffin owners can connect on the road.

26 **RV Know-How**

Use technology to help you plan the “big rocks” of your next RV adventure!

30 **Traveling with Pets**

Teach your pooch these four cues for a safe and tail-wagging trip.

18



34



30

42



72



THE BEST RV BEDDING

RECALLS AND MORE

This information is provided to make owners aware of safety recalls that may need to be completed on their motorhomes. For questions about what recalls may apply to your motorhome, please email recalls@tiffinmotorhomes.com.

NHTSA Recall #22V-273, Tiffin Recall #TIF-122 defective slide room cylinders: Tiffin Motorhomes has decided that a defect, which relates to motor vehicle safety, exists on the following models of motorhomes — **2021 Allegro Open Roads, 34 PA and 36 UA floorplans only; 2022 Allegro Open Roads, all floorplans; and 2022 Allegro Bays, all floorplans.** Tiffin Motorhomes has become aware of the possibility that on these motorhomes, the hydraulic cylinder that moves certain slide-rooms may have a defective inner seal. If a hydraulic cylinder has a defective inner seal, it is possible the slide-room could extend from the motorhome on its own 6 to 8 inches while parked after non-use, or possibly, while in transit. Please note that there is an acceptable relaxation tolerance of .5 to 1 inch. This recall is for movement beyond this tolerance. A slide-room that extends unintentionally during transit can increase the risks of a crash.

NHTSA Recall #22V-291, Tiffin Recall #TIF-123 Cahaba improper wiring and inverter installation: Tiffin Motorhomes has decided that a defect, which relates to motor vehicle safety, exists in certain **2021 and 2022 Cahaba Motorhomes, all floorplans.** Tiffin Motorhomes has become aware of the possibility that on these motorhomes, the 110-volt and 12-volt electrical system may be improperly installed, and that the inverter may not be secured. Improperly installed and unsecured electrical items may lead to a fire.

NHTSA Recall #22V-511, Tiffin Recall #TIF-124 possible defective LP service valve: Tiffin Motorhomes has decided that a defect, which relates to motor vehicle safety, exists on the following models of motorhomes — **2021, 2022 and 2023 Allegro Open Road; 2021, 2022 and 2023 Allegro RED 340; 2021 and 2022 Allegro RED 360; 2021 and 2022 Allegro Breeze; 2022 Allegro Bay; and 2021 and 2022 Phaeton Motorhomes, all equipped with the option for LP gas.** Tiffin Motorhomes has become aware of the possibility that on these motorhomes, the LP gas tank may be equipped with a defective LP service valve. A leak in the connection of the LP tank installed on a motorhome could result in a fire or explosion and serious personal injury, property damage or both.

NHTSA Recall #22V-589, Tiffin Recall #TIF-126 PowerGlide chassis 150-A circuit breaker: Tiffin Motorhomes has decided that a defect, which relates to motor vehicle safety, exists on certain motorhomes — **2022 and 2023 Allegro Breeze; 2022 and 2023 Allegro Bus; 2022 and 2023 Phaeton; and 2022 Zephyr Motorhomes, all built on Tiffin Motorhome's PowerGlide chassis.** Tiffin Motorhomes has become aware of the possibility that on these motorhomes, the chassis 150-amp circuit breakers may overheat and trip. If this were to happen, the chassis would lose power and the driver's dash display would go blank. If the chassis were to lose power, this would increase the risk of a crash.

NHTSA Recall #22V-814, Tiffin Recall #TIF-127, LPG regulator hose leak: Tiffin Motorhomes has decided that a defect, which relates to motor vehicle safety, exists on the following models of motorhomes — **2023 Allegro (Open Road); 2023 Allegro RED 340; 2022 and**

Beddy's patented zipper bedding not only makes it easy to make your bed with just a zip, but our bedding is perfect for RVs!

The unique all-in-one design is perfect for tight spaces and keeps your RV bed clean and tidy. Say goodbye to blankets everywhere or tucking comforters into tiny nooks.

Now featuring ZipBase, a removable bottom sheet so you never have to lift the mattress. Try Beddy's in your RV today!

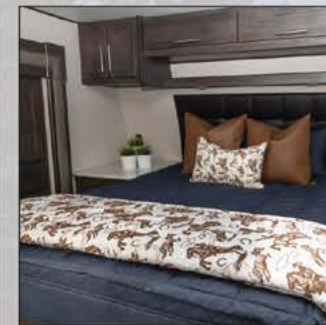


NOW AVAILABLE IN RV SIZES

WHAT MAKES BEDDY'S UNIQUE?



Patented Zipper Design



All Your Bedding In One



Covers Always Stay On



Perfect for Tight RV Spaces



Removable Bottom Sheet

USE CODE: **ALLEGROCLUB** FOR AN EXTRA 20% OFF YOUR ORDER

Stay up to date on all recalls for your motorhome model to ensure safety while traveling.



PHOTO COURTESY OF TIFFIN MOTORHOMES

2023 Allegro RED 360; 2022 and 2023 Allegro Breeze; 2022 and 2023 Allegro Bay; and 2022 and 2023 Phaeton Motorhomes, all equipped with the option for LP gas and that were built between May 5, 2022, and October 21, 2022.

Tiffin Motorhomes has become aware of the possibility that on these motorhomes, the fitting on the hose that connects to the LPG regulator to the LP tank is leaking at the swivel joint. A leak in the connection of an LP hose installed on a motorhome could result in a fire or explosion and serious personal injury, property damage or both.

NHTSA Recall #23V-104, Tiffin Recall #TIF-128, Cahaba suspension springs: Tiffin Motorhomes has decided that a defect, which relates to motor vehicle safety, exists on the following models of motorhomes — **2021 and 2022 Cahaba 19 SC Motorhomes, built between May 2021 and April 2022 and that are equipped with upgraded suspension springs.** Tiffin Mo-

torhomes has become aware of the possibility that on these motorhomes, the upgraded front suspension springs were incorrectly installed by Tiffin Motorhomes and that the upgraded rear suspension springs are incorrectly sized. On 4WD units, improperly installed front suspension springs may cause damage to the front 4WD axles, which could lead to an increased risk of a crash. On 2WD units equipped with upgraded front suspension springs, the suspension will not function as designed.

NHTSA Recall #23V-297, Tiffin Recall #TIF-129, Cahaba tire carrier & Molle rack installation: Tiffin Motorhomes has decided that a defect, which relates to motor vehicle safety, exists on the following models of motorhomes — **2021 and 2022 Cahaba 19 SC Motorhomes, built between May 2021 and April 2022, and that are equipped with a spare tire carrier and/or Molle rack.** The tire carrier and Molle rack may not be installed

LESS-LETHAL SELF-DEFENSE



STARTING AT
\$299.99

- NOT CLASSIFIED AS A FIREARM
- NO BACKGROUND CHECKS
- NO PERMITS REQUIRED
- OVER 7,000 4.5 STAR REVIEWS
- INTERSTATE TRAVEL FRIENDLY

 **BYRNA.COM**



Scan the QR code with your phone to see the new array of Byrna Pistol-Based Launchers for 2023

properly and may become loose or detached from the rear doors of the motorhome. If the spare tire carrier and Molle rack were to become loose or detach from the mounting location, this could lead to an increased risk of a crash.

NHTSA Recall # 23V-308, Tiffin Recall #TIF-130, Refrigerator Pan May Overflow onto Electrical Connections: Tiffin Motorhomes has decided that a defect, which relates to motor vehicle safety, exists on the following models of motorhomes — **2020, 2021, 2022 and 2023 Allegro Breeze Motorhomes that were built between July 2019 and April 2023.** The condensation pan located underneath the refrigerator can become full of water and may overflow onto electrical connections located on the floor. If the condensation pan were to completely fill, water could overflow onto the Molex connections, which could cause a fire.

NHTSA Recall #23V-406, Tiffin Recall #TIF-131, PowerGlide A/C compressor failure causes loss of drive power: Tiffin Motorhomes has decided that a defect, which relates to motor vehicle safety, exists on certain **2022 and 2023 Allegro Bus, Phaeton and Zephyr Motorhomes that were built between May 2022, and May 2023.** On certain motorhomes equipped with an IFM brand of chassis controller, in the event of an A/C compressor failure, the current draw spike from the compressor will blow the fuse protecting the circuit. This circuit also supplies power to the chassis ignition switch. In the event of an A/C compressor failure, there would be a sudden loss of power to the chassis. If the chassis were to lose power, this would increase the risk of a crash.

NHTSA Recall #23V-643, Tiffin Recall #TIF-133, 240V induction cooktop grounding: Tiffin Motorhomes has decided that a defect, which relates to motor vehicle safety, exists on certain **2016, 2017, 2018, 2019, 2020, 2021, 2022, 2023 and 2024 Allegro Bus motorhomes; and 2017, 2018, 2019, 2020, 2021, 2022, 2023 and 2024 Zephyr motorhomes built between April 27, 2015, and August 2, 2023, that are equipped with an optional 240V induction cooktop.** On cer-

tain motorhomes equipped with an optional 240V induction cooktop, there is no ground installed in the metal junction box used to connect the cooktop to the motorhome. If the wires inside the junction box were to short circuit, there is a risk of an electrical shock, which could increase the risk of injury.

NHTSA Recall #24V-036, Tiffin Recall #TIF-135 Villa driver's seat pedestal weld: Tiffin Motorhomes has decided that a defect, which relates to motor vehicle safety, exists in certain **2022 Allegro Bus motorhomes, 2022 Phaeton motorhomes, 2022 Allegro RED 360 motorhomes, and 2022 Zephyr motorhomes built between January 3, 2022, and April 28, 2022.** On certain motorhomes the driver's seat pedestal may not be completely welded. If the driver's seat pedestal is not completely welded, this could cause the seat to break, which could result in injury to the driver and an increased risk of a crash.

NHTSA Recall #24V-049, Tiffin Recall #TIF-136, solar panel bracket failure: Tiffin Motorhomes has decided that a defect, which relates to motor vehicle safety, exists on the following models of motorhomes — **2023 and 2024 Convoy motorhomes, and 2023 and 2024 Tiffin GH1 motorhomes built between March 23, 2023, and December 6, 2023.** The aluminum brackets used to secure the solar panel to the motorhome are breaking. If the aluminum solar panel brackets were to break and the solar panel detaches from the mounting location, this could lead to an increased risk of a crash.

NHTSA Recall #24V-062, Tiffin Recall #TIF-137, Allegro Bay battery hold-down bars: Tiffin Motorhomes has decided that a defect, which relates to motor vehicle safety, exists in certain **2022, 2023 and 2024 Allegro Bay motorhomes built between September 14, 2021, until December 7, 2023, that are equipped with standard house batteries.** On certain motorhomes equipped with standard house batteries, the batteries may shift during travel, which can allow the battery terminals to contact the battery hold-down bars. If the steel hold-down bar contacts the battery terminals, there is the possibility of arcing, which could lead to a fire. 🚗



Contact our highly qualified technicians to consult on your RV power system...

909-599-7816 or info@lifelinebatteries.com

**HIGHEST CAPACITY
PROVEN RELIABILITY
US MILITARY SPECS
AEROSPACE CRAFTMANSHIP**



**MORE THAN FOUR
DECADES OF THE
MOST RELIABLE AND
PROVEN AGM AND
LITHIUM BATTERY
TECHNOLOGIES...**

Family owned & operated
for 40+ years



SAY NO TO ALLERGIES

Don't let the sniffles from environmental allergies ruin your next road trip. RV Air filters capture more microparticles without restricting airflow of your air conditioner.

Big Bend National Park was everything Eddie Rice pictured and then some. Every sunset rivaled the next — a palette of watercolors bleeding together above the craggy Texas horizon. Roadrunners skittered across the road at random, and even in the arid climate, patches of waxy vegetation and thorny shrubs dotted the landscape, their flowering plants emitting a foreign fragrance.

Only days into the Texas stretch of their four-month RV trip, Rice's wife, Rose, became unexpectedly sick. With each passing day of Big Bend fresh air, her illness worsened until they finally paid a visit to a nearby doctor.

The diagnosis? Environmental allergies. According to the doctor, it's an all-too-common condition that can plague travelers, especially when exposed to different regions. Likewise, an environmental allergy is simply the body's adverse immune response to surroundings that are typically harmless.

SEARCHING FOR A GOOD AIR FILTER

In the end, the doctor suggested a simple fix: a good air filter for the Rice's RV.

Sure enough, when Rice checked the RV's flimsy foam AC filter, it was filthy with grime, dust, dirt and debris. But finding a new and less flimsy filter wasn't that simple.

Rice scoured Texas RV stores, only to be directed to the nearest Home Depot with the advice to cut a filter down to size, which only led to more problems — the build-up of mold in the paper filter.

"It turns out home filters aren't designed for RVs, especially when all of that filter gunk gets locked up and stored away weeks at a time," Rice explained. "And we all know how hot a closed-up RV can get. In 200-degree conditions, mold loves to grow."

DESIGNING A BETTER FILTER

With no suitable RV A/C air-filter replacements for allergies to be found, Rice took matters into his own hands. In 2014, the former engineer put his retired skills (and the skills of a friend) to work, and that's when **RV Air** was born.

"Consider these filters your first line of defense against airborne contaminants," Rice said. "We're the only RV air filter with a MERV 6 rating that helps capture dust, pollen, mites, bacteria, pet dander, mold spores and other allergens, but what makes this filter different from our existing filters is its cut-to-fit application. In light of COVID, we truly wanted a universal filter that could protect all RVers from airborne contaminants."

RV Air's first filters hit the market in 2014, designed to surpass the typical stock AC unit filters, which are only designed to keep debris out of the cooling unit and not the interior. These standard filters are made of thin black polypropylene, similar to a hair dryer filter. On the other hand, RV Air is the first and only air-filter system designed specifically for RVs to undergo and obtain UL® Certification, along with its MERV 6 rating.

The MERV 6 rating is ideal for RV applications. While MERV ratings can range from 1-16 (with 16 capturing the most particles), super high ratings can restrict airflow and be taxing on RV air conditioners. The MERV 6 rating has been found to capture more microparticles than standard filters while not restricting unit airflow.

"The launch of this filter will definitely be a game changer for us and the RV market," Rice said. "It really will be a breath of fresh air for RVers as they hit the road in whatever RV fits their lifestyle."

Get your RV Air Filters online at tiffingeneralstore.com.



CONTACT US!

Letters to the Editor: To send us comments or questions about the magazine, please email RoughingItSmoothlyMag@outlook.com and put "Letters" in the subject line.

Recalls: For questions about recalls that may apply to your coach, please email recalls@tiffinmotorhomes.com.

"From the Road" travel stories: We love hearing from Tiffin owners and invite you to share the special places you have discovered during your RV travels. Tell us about where you've been, including your favorite parks, restaurants, fishing spots, hiking trails, attractions, festivals, or just share a fun travel story. Go to rismag.org/contact/travelstories or email RoughingItSmoothlyMag@outlook.com and put "From the Road" in the subject line. Please share photos, too!

Tech Talk: The Tiffin Tech Team welcomes your questions and will address them with experts and specialists in the Tiffin Service Center. To send a question, especially those that may be useful to all our readers, go to rismag.org/contact/techtalk. You can also email RoughingItSmoothlyMag@outlook.com and put "Tech Talk" in the subject line.



- GET YOUR LAUNDRY DONE WHERE YOU ARE
- ENJOY A FULL RANGE OF WASH AND DRY CYCLES
- DO BIGGER LOADS WITH A CLASS-LEADING 4 CU. FT. DRYER DRUM

*No laundromat?
No problem.*

A Splendide RV laundry appliance can grant you the power to turn any laundry day into a wondrous walk in the park. Discover the freedom of RV laundry possibilities, visit www.splendide.com today.



Updated Website

We're excited to announce the official launch of the updated **Allegro Club website**. At the Tiffin Allegro Club, we're dedicated to continuously enhancing your membership experience. Here are a few of our benefit partners:



Monitor **our website** for updates on special offers and promotions tailored specifically for Tiffin Allegro Club members. Unlock a world of benefits and rewards with us!

Lisa Smith
President, Tiffin Allegro Club



JOIN A CHAPTER!

Attention Tiffin Allegro Club members: Are you ready to take your Tiffin adventures to the next level? We understand that Tiffin or Van-leigh RV owners value the sense of community that comes from sharing experiences with fellow owners. Our local chapters provide the

perfect opportunity to forge connections, share stories and create memories that last a lifetime.

By joining a local chapter, you'll immerse yourself in a world of camaraderie and adventure right in your neighborhood. Imagine rallying with fellow Tiffin owners for weekend getaways, exploring scenic routes and discov-



ENJOY YOUR ADVENTURES. WE'LL TRACK YOUR MAINTENANCE.

TAKE THE GUESSWORK OUT OF RV MAINTENANCE
WITH OUR ALL-NEW OWNER'S APP.

Call or email FCCC technicians

Track factory-recommended maintenance schedules & monitor upcoming service needs

Find Oasis service locations, Elite Support, hours, and more with an enhanced service locator

Access quick guides for dash light descriptions, DriveTech control videos, and more

Track mileage to see just how far you've traveled

Scan to download the all-new My 24/7 Direct app!



POWERGLIDE XC



ering hidden gems. Our chapters are more than just gatherings — they're communities where lifelong friendships are formed.

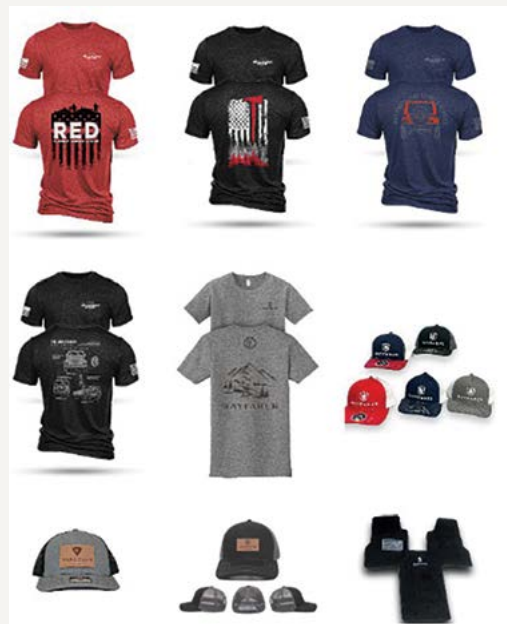
To find a chapter near you, visit our website at tiffinallegroclub.com. If you can't find a chapter in your area and are interested in starting one, contact our office at allegroclub@tiffinmotorhomes, and we will schedule a call to discuss the next steps.

GET NEWS AND UPDATES

We have heard that many "unofficial Tiffin" Facebook pages are preventing essential information from being shared and posted by Tiffin employees. To ensure you are receiving important announcements and updates from the main Tiffin office and the Tiffin Allegro Club, such as factory news, technical tips, facility updates, upcoming rallies and events, new benefit partners and discounts, we invite you to click on and like the [Tiffin Motorhomes](#)

SHOP NEW MERCHANDISE

We're excited to unveil a fresh selection of merchandise and accessories, available both at our Red Bay in-store location and online at tiffingeneralstore.com. From stylish apparel to must-have RV accessories, there's something for everyone. Explore our new arrivals and gear up for your next adventure in style!



Facebook page, the **Tiffin Allegro Club Facebook page** and our official Tiffin owners Facebook groups where you can interact with other owners and be the first to receive updates or answers regarding your Tiffin motorhome by hearing it straight from the source.

Each group is separated by class and includes knowledgeable Tiffin employees who can answer questions and provide relevant updates. Click on the links below to join these Facebook groups.

- **Bob Tiffin Service Center**
- **Tiffin Class A and Super C Owners Group**
- **Tiffin Adventure Series Owners Group**
- **Tiffin Class C Owners Group**

HERO DISCOUNTS

At the Tiffin Allegro Club & General Store, we are immensely grateful for the brave individuals who have served our nation and communities. To express our appreciation, we've partnered with GovX to offer an exclusive 20% discount at our store. Visit tiffingeneralstore.com to learn more.

This offer is eligible to current and former U.S. military members, military spouses and dependents, and first responders (including law enforcement, fire and EMS).



2024 TIFFIN ALLEGRO CLUB RALLIES

- **Auburndale, Florida:** April 22 to 26, 2024 — SOLD OUT
- **Larkspur, Colorado:** August 5 to 9, 2024 — SOLD OUT; wait list open
- **Tucson, Arizona:** Monday, October 14, to Friday, October 18, 2024 (departing Saturday, October 19). Lottery registration opens at 9 a.m. CST on May 22, 2024.

Please be advised that rally dates, locations and lottery application dates are subject to change. Complete rally details and registration information will be announced prior to each registration date, so monitor the following media pages for up-to-date information: [Tiffin Allegro Club Facebook page](#), [Tiffin Side Roads News page](#) and [Tiffin Allegro Club website](#).



Tour Highlights:

- Key West Sunset Dinner Cruise
- Daytona International Speedway
- Glass Bottom Boat Wildlife Cruise
- Everglades Airboat Ride
- Kennedy Space Center
- Thomas Edison & Henry Ford Estates
- Jungle Queen Dinner Show Cruise
- Amelia Island
- Guided Miami Motorcoach Tour

Two Person / RV \$13,495
(Tiffin members take \$500 off this price!)

One Person / RV \$10,395
(Tiffin members take \$500 off this price!)

Additional Guest \$5,295

AdventureCaravans.com | 936-327-3428



Find the Right Balance

Remain productive by keeping work and life separate(ish) while you're on the road.

BY KATHRYN DRURY WAGNER

Whether you are self-employed, semi-retired or “working for the man,” there’s a good chance you’re performing some of your job while embracing the freedom that comes from owning a motorhome. About 35% of the U.S. workforce has jobs that can be done remotely (either on a hybrid schedule or totally off-site), according to data from the **Pew Research Center**. So many Tiffin owners are out exploring the country in their RVs, while still driving their careers forward.

It’s the dream, really: Traveling all over while bringing in income. However, remote work also comes with its own set of challenges, many of them involving boundaries. Work can creep into personal time — gotta love those clients who send feedback at 4:55 p.m. on Friday, or the supervisor who broadcasts a flurry of Sunday emails. Trying to keep up

is a juggling act that can lead to anxiety, depression and reduced productivity. Some countries like France, Portugal and Kenya passed “**right to disconnect**” laws, which ban employers from reaching out to employees during non-work hours. How civilized!

Conversely, personal time can chip into work hours because you’re surrounded by temptations. Who wouldn’t prefer poking around a national park or sampling biscuits and gravy at a local restaurant, rather than logging into the company VPN or attending another Zoom meeting? It can be hard to get motivated to get into work mode, much less a deep, productive flow-state.

But it is possible to carve out time for all sides of yourself. Here are five ways to balance work time and personal time, while still enjoying the liberation of RV life.



ALEXANDR SIMONOV / ADOBE STOCK

TIP #1: ASSESS AND REDUCE INTERRUPTIONS

According to the **Harvard Business Review**, employees are interrupted about every 6 to 12 minutes. That’s a whole lot of phone calls, texts, emails from work, plus, your dog demanding a belly rub or your spouse asking, “Hey, what are we thinking for dinner?”

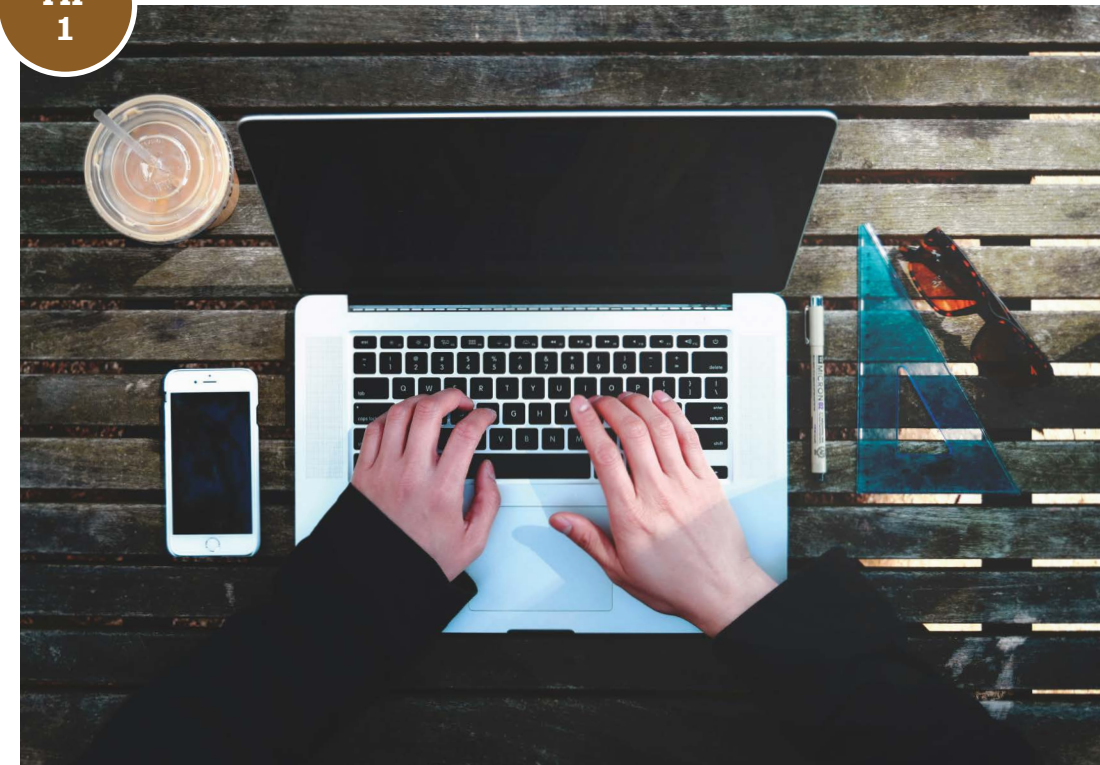
To keep interruptions to a minimum, designate a workspace, such as the dinette bar in your RV. Declare to your traveling companions that while you’re in this work zone, you’re doing serious stuff and need to be left alone. True, it can take some gentle (or not so gentle) persistence to train others. Some people find a visual hint, like a “Do Not Disturb” sign, to be helpful. I heard about someone who wore a Viking helmet with horns whenever he was getting work done — silly, but effective. Personally, I flip on an “On Air” radio-style sign to let my family know when I’m knee-deep in writing, editing or researching.

Accessories like earplugs or earphones help, too.

On the digital side, quiet the dinging and pinging by opting out of notifications (turn off everything except the most important ones) and setting collaborative work tools like Slack to “focus” mode. If you need a little boost of will power, there are focus apps, such as **Freedom**, **Cold Turkey** and **SelfControl**, that can block temptations on your devices, such as social media and news sites, for whatever hours you set.

Some time-management experts also suggest creating two user profiles on your computer or phone. How to do this will differ on the brand of device but envision something like this: One login leads you to a home page

TIP 1



axelbloom MADE IN AUSTRIA
german schlafsysteme

BEDS

Starting at \$898!

The most Comfortable & Custom size German adjustable bed for RVs, Sprinters, and 5th Wheelers.

2019
Tiffin Allegro Bus 45OPP
Custom King Doppelflex
MX2, Two-Motor
Adjustable System

2022
Tiffin Allegro Bus 40IP
Custom King Doppelflex
MX2, Two-Motor
Adjustable System

2020
Tiffin Wayfarer
Custom Queen Doppelflex
MX2, Two-Motor
Adjustable System

VETERAN & SENIOR DISCOUNTS

MORE INFORMATION:
866-696-8387 LUXURYRV.AXELBLOOM.COM

QUALITÄT GERMAN
technologie

BBB
BUSINESS
rating

A+
rating

f

with your favorite news and leisure tabs or apps, while the other pops up your work email, company portals or e-commerce site.

TIP #2: USE A SOUND CUE

Just as having a visual cue helps set work-life boundaries, so too, can an aural cue. For some, this might be classical music, while others prefer the sounds of nature, like a thunderstorm or birds in a forest. My favorite the Harry Potter-inspired YouTube video called **“Hogwarts Library.”** When I need to really concentrate, I pop on my headphones and am instantly transported to a library with a crackling fire in the hearth and the gentle sounds of pages turning and pens scribbling.

YouTube has hundreds of these videos, offering soothing, immersive soundscapes, like “a rainy night in a greenhouse.” If the weather is nice and you’re able to work from a chair or picnic table in a national park, forest or at the seaside, well, your nature sounds are real and on-site — another bonus to working while on the road.

TIP #3: TAKE BREAKS

Contrary to what you might expect, people working offsite tend to put in more hours, not less, than their in-office peers. The main rea-

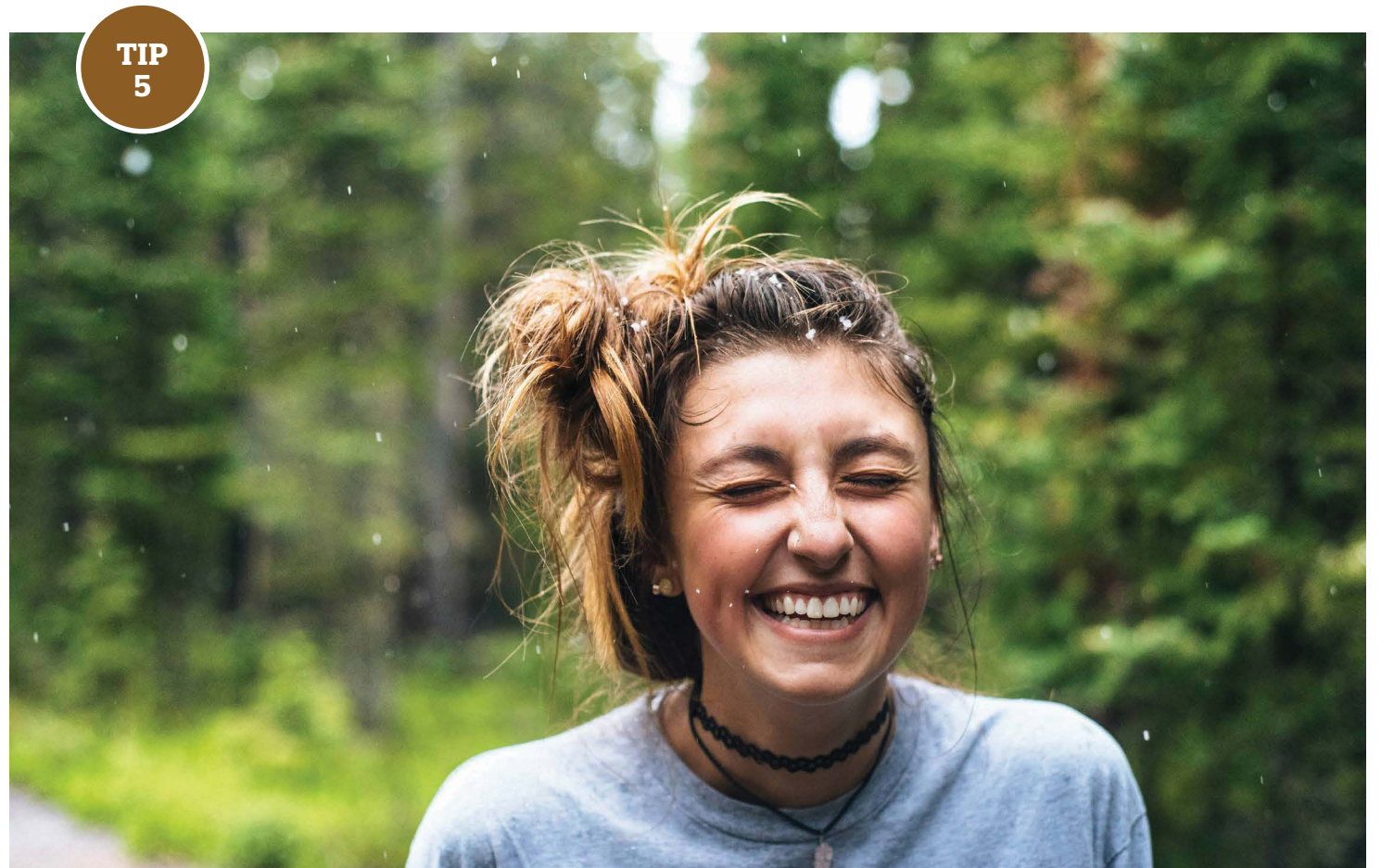
son is that they take less breaks. The solution? Try an “exercise snack” — a few jumping jacks, some squats or stretches. According to research conducted at the **University of Sunderland**, doing little bite-sized movements twice an hour reduces the risk of heart attacks and strokes, and can help manage blood sugar. We’re talking truly small amounts of exercise — in one experiment, it was three minutes of light walking, every half hour.

TIP #4: ADJUST YOUR SCHEDULE

If your work is flexible, as opposed to having set hours, make the most of your chronotype. A chronotype is your natural body clock rhythms; the key is to work with it, not force against it. For early birds, waking up at 5:30 a.m. means some blissful peace to bang out some work, while night owls would find that unproductive and downright punitive — no matter how noble “the early bird gets the worm” sounds. If you are most energized and creative at 11 p.m., have at it.

TIP #5: SHAKE THE WHOLE THING UP

If none of these tips are helping, try “work-life integration,” an idea that has been gaining interest from some organizational psych



experts. Work-life integration does away with strict boundaries between roles, in the belief that partitioning work and life can actually increase cognitive stress.

For example, research published in the journal **Human Relations** found that people who had loosey-goosey boundaries between career and non-work tasks felt less depleted as they switched back and forth. The researchers found that letting your mind wander or making a personal call during work time (or vice versa) might make people more productive.

So, experiment and see which methods work best for you. Just don’t be surprised if you get promoted while working from your motorhome. 🚐

Kathryn Drury Wagner is a Savannah-based writer and editor. She is the author of two books and writes frequently about health and wellness for national publications.

WHILE IN RED BAY ...

ALL IN ONE STOP (No Running Around!)



OUR PRODUCTS

SAFE T PLUS STEERING CONTROL
Helps reduce over-steering, side winds, passing trucks, blowout protection

KONI SHOCKS
Smoother, plush ride

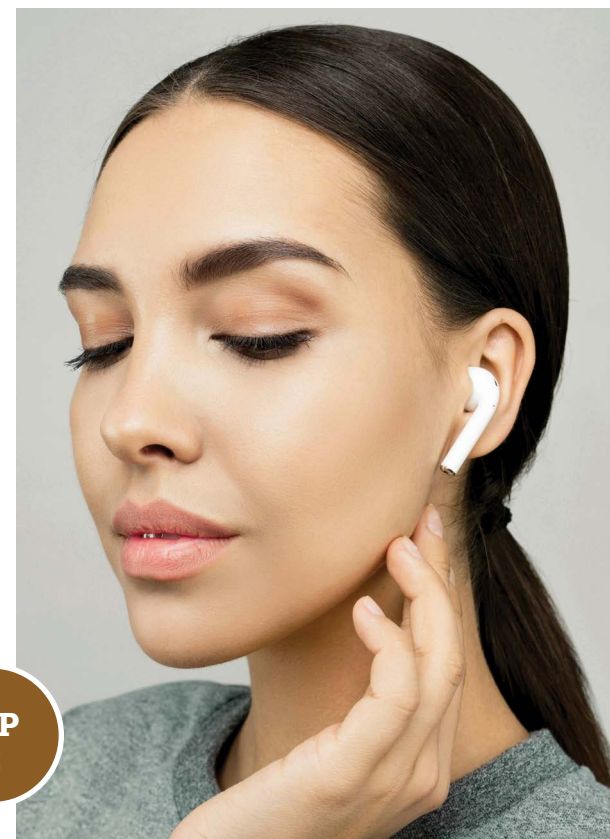
TRAC BAR
Reduces “fish tailing” effect, helps eliminate unwanted & uncontrolled side shift in rear axle which helps enhance driver control

RADIUS RODS
Helps reduce front to back flexing, experienced improved cornering, helps reduce sawing at wheel

SWAY BAR
Reduces the top heaviness feel; stabilizes sway, improves overall driver control

MOTION CONTROL UNIT
Controls excessive sway, body roll, bounce & rocking motions

TIRE MONITOR SYSTEM
Monitors temp and inflation



Check In with the Seagers

Finding other Tiffin owners while on the road is much easier thanks to the Tiffin Check In Facebook group, started by Kim Seager.

BY STEVE HUTTON

It's hard to believe that 20 years ago, the term "social media" didn't exist. Now it has become deeply integrated into our lives. It's reported that 60% of the entire world uses social media — and for an average of two hours a day! How did we get from Friendster and MySpace, arguably the first two social media platforms introduced in 2002, to a multi-billion-dollar industry that shapes everything from politics, social trends, pop culture and even the RV industry.

Love it or hate it, there is no going back. And honestly, many in the RV community, specifically in the Tiffin family of RVers, have

embraced various social-media platforms, with Facebook being king and Facebook groups being the preferred medium.

Each month, 1.8 billion people use Facebook groups — a number that has almost doubled in the past few years. Facebook redesigned the user experience to focus more on groups and less on friends' posts. This change, combined with better suggestions, has led more users to join groups and engage inside them. Consequently, the number of people in groups that they find "meaningful" has increased from 100 million to over 400 million people during this same time frame.



The Seagers enjoy time on the water at Moon Lake, which is located about 15 miles northwest of Tok, Alaska.

PHOTOS COURTESY OF KIM AND MITCH SEAGER

A quick search for "Tiffin" in Facebook will yield many groups, such as Tiffin Motorhomes Technical Forum, Tiffin Motorhomes for Sale, Tiffin Motorhome Owners and Tiffin Motorhomes Lifestyle. There are also groups dedicated to specific models like Tiffin Open Roaders, Tiffin Phaeton Owners, Tiffin Allegro Bus Owners and more.

CLOSE-KNIT RVERS

While these groups are fabulous for tips and tricks, another popular group is **Tiffin Check In**. This group is truly what community is all about. Tiffin Check In emphasizes the social in social media. The brainchild of Tiffin owner Kim Seager, Tiffin Check In allows Tiffin owners to record when they arrive at a resort or park, which in turn allows other Tiffin owners who happen to be in the area an opportunity to drop by and say hello.

In the spring of 2019, Kim and her husband, Mitch, visited family near Tampa, Florida, and decided to stop by Lazy Days to look at a few shiny new fifth wheels. The savvy salesperson quizzed the Seagers about their likes, dislikes, wants and needs. He helped the Seagers determine that a motorhome would fit their style of travel better than a fifth wheel. Kim, a recently retired attorney and family court judge, and Mitch, a retired senior manager at a 911 telecom center in upstate New York, were soon driving off the lot in a brand-new Tiffin Open Road 34 PA.

Being new to the Tiffin family and new to the RV family in general, the Seagers were in Red Bay, Alabama, a few months later to knock out the few items on their punch list and take care of some minor warranty repairs at the company headquarters. They thoroughly enjoyed meeting fellow Tiffin owners and soaked up the knowledge from

Tiffin veterans. They had no idea what a close-knit group RVers were, but even more specifically how fellow Tiffin owners easily and naturally became immediate friends.

LAUNCH OF THE CHECK-IN

That winter, the Seagers visited an RV park in Alpine, Texas. There was another Phaeton in the park, but neither Kim nor

Mitch were outside at the same time as their Tiffin neighbors. One day, the Seagers woke up to find an ice-covered Texas. Mitch was recovering from a total hip replacement and was resting inside, so Kim decided to walk their dogs, Bronx and Bomber, named after their beloved New York Yankees.

During this walk, the Phaeton owner was outside as well;

MagneShade
by Hunckler Fabrication LLC

THE EXCLUSIVE MAGNETIC SUNSHADE FOR RVs

- 80% - 99% UV Protection
- Substantial Heat Reduction
- Patented Magnetic Design
- No Snaps, No Holes
- Made in the USA

Exterior Shades Tire Shades Custom Floor Mats
Interior Shades Awning Drops

336.753.0905 **MagneShade.com**



The Seagers and their dogs, Bronx and Bomber.

After meeting through Tiffin Check In on Facebook, this group of RVers traveled to Alaska together.



however, he was up on the roof of his Tiffin cleaning off his ice-covered slide toppers and preparing to pop the slides in and drive to their next destination.

Kim hollered, “Hey there, we are new at this, what exactly are you doing up there?”

The Phaeton owner explained the potential danger of retracting your slides while the toppers are covered in ice, something the Seagers weren’t aware of. With Mitch’s recuperation and Kim having no desire to navigate the ice rink on their roof, the couple decided to stay another day and let nature melt the ice.

Kim posted about the experience on Facebook, and as luck would have it, the wife of the Phaeton owner, responded and com-

mented on Kim’s post. “That was the ‘aha’ moment,” Kim said. “I wanted to have some way to introduce myself to people who maybe want to chat but were never available to chat. So that was the birth of Tiffin Check In. Its primary purpose is to meet other Tiffin owners.”

Having enjoyed their RV experience as snowbirds, the Seagers decided to sell their long-time house and property in New York state. Since 2021, they have become one of the many full-time RV couples traveling across the U.S.

TRAVELING TOGETHER

A great example of how the Facebook group has connected Tiffin owners is when the Seagers went to Huntsville, Alabama, in the summer of 2020 and checked in on the Facebook page. Tiffin owners Rae and Jamie Tardif were also in Huntsville and reached out. Kim mentioned that they wanted to visit the Huntsville Botanical Garden, and Rae said that they also were interested. So, the four met at the garden, and a friendship was quickly formed. A year later, the Seagers and Tardifs reconnected in Maine when both used the Tiffin Check In page at the same RV park.

The Tardifs discussed how they really wanted to go to Alaska in 2023. The Seagers had been contemplating a trip there as well, and the discussion began about traveling together. At some point, the Seagers checked in at Red Bay, and Scott and Tami Fox saw the check-in and sought them out. The Foxes decided to join the Alaska trip (read about Scott and Tami’s adventure to see Denali on page 72). Eventually the Tardifs met Molly and Gery Thompson, and a fourth couple was added. After a Michigan check-in, the Seagers met Cheryl and Greg Schwartz, and within 15 minutes a fifth couple was added to the trip.

All of this because of the Facebook Tiffin Check In group. Rumor has it that there are now discussions of a 2025 trip to Banff and Calgary (for the Stampede) and more joint trips are in the works.

MORE WAYS TO CONNECT

In addition to Tiffin Check In, Kim also manages two other Tiffin-related groups: Tiffin Outdoor Adventures and Tiffin Eats.

Tiffin Outdoor Adventures is dedicated to those who enjoy outdoor activities like scuba diving, snorkeling, kayaking/canoeing, biking or hiking. Members share their outdoor activities,



as well as great locations to park their Tiffin while enjoying the great outdoors. Kim just recently hit 5,500 miles on her Pedego e-bike, and she learned about many of the trails she and Mitch have traversed through these groups.

Tiffin Eats is dedicated to those who love to eat! Whether it’s cooking in the coach, barbecuing on the grill, enjoying local take out, or indulging in fine dining and cocktails, Tiffin Eats is the place to share. Kitchen tips and tricks are also shared among group members.

So, be on the lookout for Kim and Mitch Seager, or better yet, join the Tiffin Check In group and there’s a good chance that they might find you! They have several bucket list adventures ahead, like visiting all the presidential libraries and all Major League Baseball parks. Be sure to check-in on your next trip and prepare to meet some fantastic Tiffin owners who are located close by. 🗺️

Steve Hutton is a former PGA Professional and PGA Tour event tournament director. He and his wife, Joni, travel 30 to 40 nights per year in their Tiffin. They reside in Central Mississippi along with two adult sons, a grand baby and two furry companions.

The Seagers and their pooches explore New Albany, Mississippi, on their e-bikes.





Appalachian Foothills
RV PARK AND SERVICE CENTER

YOUR RV PAINT & BODY CONNECTION

- ➔ RV Paint and Body Repair Specialists
- ➔ Insurance Claims and Personal Repair
- ➔ All Makes and Models
- ➔ Full Service RV Park with high speed WIFI on site
- ➔ Custom Cabinets, Paint, and all General Maintenance at one location
- ➔ Conveniently located just off I-22, Exit 30 in Winfield, AL

Set an appointment today
(205) 430-2480 | Christian@afrvpark.com
www.afrvpark.com

Trip Planning

Use technology to help you select the “big rocks” of your next adventure!

ARTICLE AND PHOTOGRAPHS BY STEVE BLUME

Are you like a dandelion that drifts with the wind, carefree in your travels with little regard for extensive planning? Oh, how I envy you. Not only do I have campgrounds booked and routes mapped out months in advance, but I even know the rest areas and fuel stops! When it comes to trip planning, I think we can all agree that it's personal. For example, we ranked our favorite campsites (using a 1-2-3-star rating) along with some RV friends — and not a single one of ours was on their list. Like I said, it's personal.

Epic trips require time and effort to plan. There are tons of helpful trip-planning tools or you may have your own system that

works for you. What's important is to keep track of everything, hopefully in one place. A friend uses a simple note file on her phone and scrolls and scrolls. Another uses her phone calendar along with an atlas. Another uses a spreadsheet with dates on the left and campgrounds and things to see and do in columns to the right.

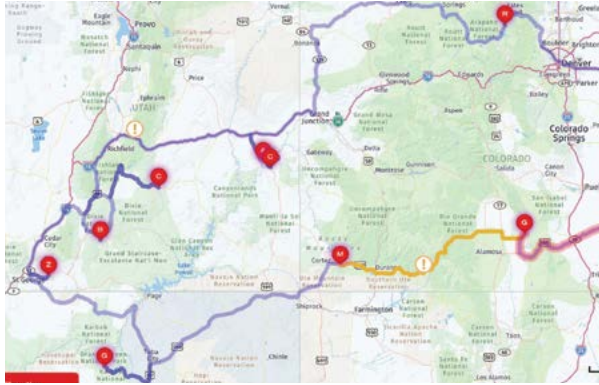
I like technology with information and a digital map at my fingertips, but my wife still brings her paper calendar. A lot of RVers use **RV Parky** or **RV LIFE Trip Wizard**. I prefer Trip Wizard (along with 2 million others) because it's so easy to use. Imagine a map on your computer screen where you type a



Our trip out west included stops in Colorado, including Great Sand Dunes National Park and Preserve (right) and a ride on the Durango and Silverton Narrow Gauge Railroad (opposite page).



RV LIFE Trip Wizard is a great resource that will make trip planning a breeze.



destination in the search bar, then select the “add to my trip” icon, and it appears as a point on the map with an RV-safe route highlighted along with the distance between points. Zoom in to see nearby campgrounds with reviews, photos, contact information and a link. Trip Wizard is web-based, so you can do all your planning on a computer or tablet when you have access to the internet. An annual subscription is \$65, but Tiffin owners get 25% off a new enrollment using the code **TIFFINMH**.

Trip planning with multiple stops requires you to cycle through four things — *Destination, Route, Activities and Time*. Every trip starts with a blank page. Where do you want to go? How are you going to keep up with everything? As your plans start materializing, you will cycle through these steps many times, modifying and perfecting each one.

DESTINATION

First, put in the “big rocks,” the big, must-see destinations, then add the “little rocks,” nearby places that would be nice to work in if time allows. Here’s what we did when

STEP BY STEP TRIP-PLANNING

- Choose your “big rocks.”
- Start planning early.
- Select a planning tool that works for you.
- *Destination, Route, Activities, Time* — repeat multiple times.
- Understand timed entry at each national park.
- Consider climate when you will be there.
- Epic trips take time and effort to plan, so allot enough time to do it right.

planning a recent trip to Utah where we wanted to see five amazing national parks (our “big rocks”) — **Arches, Bryce Canyon, Canyonlands, Capitol Reef** and **Zion** — which are collectively known as the Mighty Five (read about our visit to Utah on page 66). We also wanted to see other national parks along the way and utilize our America the Beautiful pass. Depending on your age, you can purchase an annual or Senior Lifetime pass at [recreation.gov](https://www.recreation.gov) to more than 2,000 federal recreation sites across the country. A pass covers entrance, standard amenity fees and day use fees for the passholder and all passengers in a personal vehicle at per vehicle fee areas (or up to four adults at sites that charge per person), plus it saves you 50% on federal campsites.

ROUTE

In Trip Wizard, I created a new trip called “UT Parks,” set the start point and last stop as our home in Tennessee, then entered each of these parks in the search bar and clicked “add to trip.” The map on the screen now had an icon for each park and on the left a box with a corresponding list of stops and mileage between them. Because Trip Wizard also shows every national park on the map, we quickly realized that with a few minor route changes, we could add four more big national parks to our trip — **Rocky Mountain, Grand Canyon, Mesa Verde** and **Great Sand Dunes**. Our tentative route was started, but many changes would come later as we began our research.

Rocky Mountain National Park was our first big rock on the way to Utah, and our campground was on Lake Granby in the **Arapaho National Recreation Area** just outside the park, 1,300 miles from home. I have friends who would push through that in two days, but we prefer a more leisurely 350 miles per day max. Time and distance always come into play, but we still look for short stops to break up long drives. I took the opportunity to make two-hour stops at the presidential libraries of **Dwight D. Eisenhower** in Abilene, Kansas, and **Harry S. Truman** in Independence, Missouri, knowing that there would be plenty of bus parking. **Harvest Host** has overnight parking at over 5,000 farms, vineyards, breweries and attractions, so we put a few of those in our mix.



ACTIVITIES

Once the rough framework of our trip was established on my computer, it was time to start making it real. Where would we stay, and what would we do from that location? There are many great resources on how to visit the Utah Mighty Five, such as YouTube videos, blogs, websites, Facebook groups and articles. I devoured everything I could find, pasting notes and links (to things to see and do, distance to planned adventures, cost of the campground, any permits or passes required, etc.) in the Trip Wizard “comments” for that stop.

Our little rocks started to find their way onto our calendar, including hikes and must-visit dining spots. For the trip back home, we added **Antelope Canyon** and **Monument Valley**. **Durango** and its famous narrow-gauge railroad to **Silverton** became a stop, then on to **Colorado Springs** and the train ride up **Pikes Peak**.

TIME

Based on the activities, we decided how long we wanted to stay at each stop, selected our campground then clicked “add to route.” If you want to go there, chances are a million other folks want to go there, too, so advance reservations are essential!

Popular campgrounds are booked months in advance. Many national parks require timed-entry reservations, so it’s important to know when the reservation window opens and be online at that exact time.

When do you want to go? We find that things are less crowded when kids are in school if that is an option for you, but some of the higher elevation destinations have snow if you go too early or late.

PLAN YOUR TRIP

Repeat: *Destination, Route, Activities, Time*. You will continue to research and explore things to see and do, decide where they fit on your route, how much time is needed, and react to availability or lack of it. If you are adventurous, leave some open days for flexibility.

I remember a drive-time radio DJ who would make brash statements then finish with, “That’s my opinion — ought to be yours, too!” You don’t have to do it my way, but my way is one way that works. 🗨️

A retired entrepreneur, Steve Blume and his wife, Nancy, spend half the year on the road and the other half at their Brentwood, Tennessee, home. His articles have appeared in newspapers and magazines on multiple topics.

Training Cues for the Road

Teach your pooch these four cues for a tail-wagging trip.

BY MELISSA L. KAUFFMAN



If you have a dog that is a little lacking in manners or reactive in any way, it can make RVing more stressful than relaxing. You can change that by teaching your dog these four verbal cues.

For all these cues, start with a bag of high-value tasty treats, something your dog will never turn down. I use freeze-dried protein treats available at your local pet store.

First, introduce the cues in an area without distractions like your backyard or inside your house. Once your dog has mastered them, move to an area with distractions and train him until he masters the cues under those conditions.

If you don't want to use verbal cues, try hand signals, a clicker or a whistle to train your dog — have a professional dog trainer show you how or look online for detailed instructions.

Follow these basic steps for each of these essential verbal cues.

COME

One of the main cues every dog should know is recall — you call your dog and she returns to your side. It keeps your dog from running off if she accidentally gets off leash and can save her life if she encounters something dangerous.

1. Put some distance between you and your dog, start small and gradually increase the distance. Your dog can be off leash if you're in your backyard or on a long leash if you are outside a fenced area.

2. Say the verbal cue, "Come," and let your dog see the yummy treat in your hand as a motivation to come to you.

3. Once she comes to you, mark the completion of the cue with the verbal marker "Yes." Hand her a treat and give her happy praise.

4. Walk away from your dog and repeat until she has paired the verbal cue "come" with the action of coming.

LEAVE IT

Dogs come across many enticing yet dangerous things at campgrounds and on trails. Keep them from putting something dangerous in their mouth (like chocolate from s'mores or a snake), by teaching your dog the cue "leave it."

1. Let your dog see the treat and then hold it in your closed fist. Say the cue, "Leave it."

2. When your dog stops sniffing your closed fist, mark it by saying "Yes," and give him a different treat. Repeat until he pairs "leave it" with leaving the first treat alone.

3. Next, put your dog on a leash. Place the treat farther away, letting your dog see it. Say, "Leave it." When he stops pulling on the leash to get the treat, mark it with a "Yes," and give him a different treat. Repeat until he pair "leave it" with leaving the treat alone.

4. Lastly, place the treat in various places and do it all over again. It's good to continually practice this cue.

PLACE

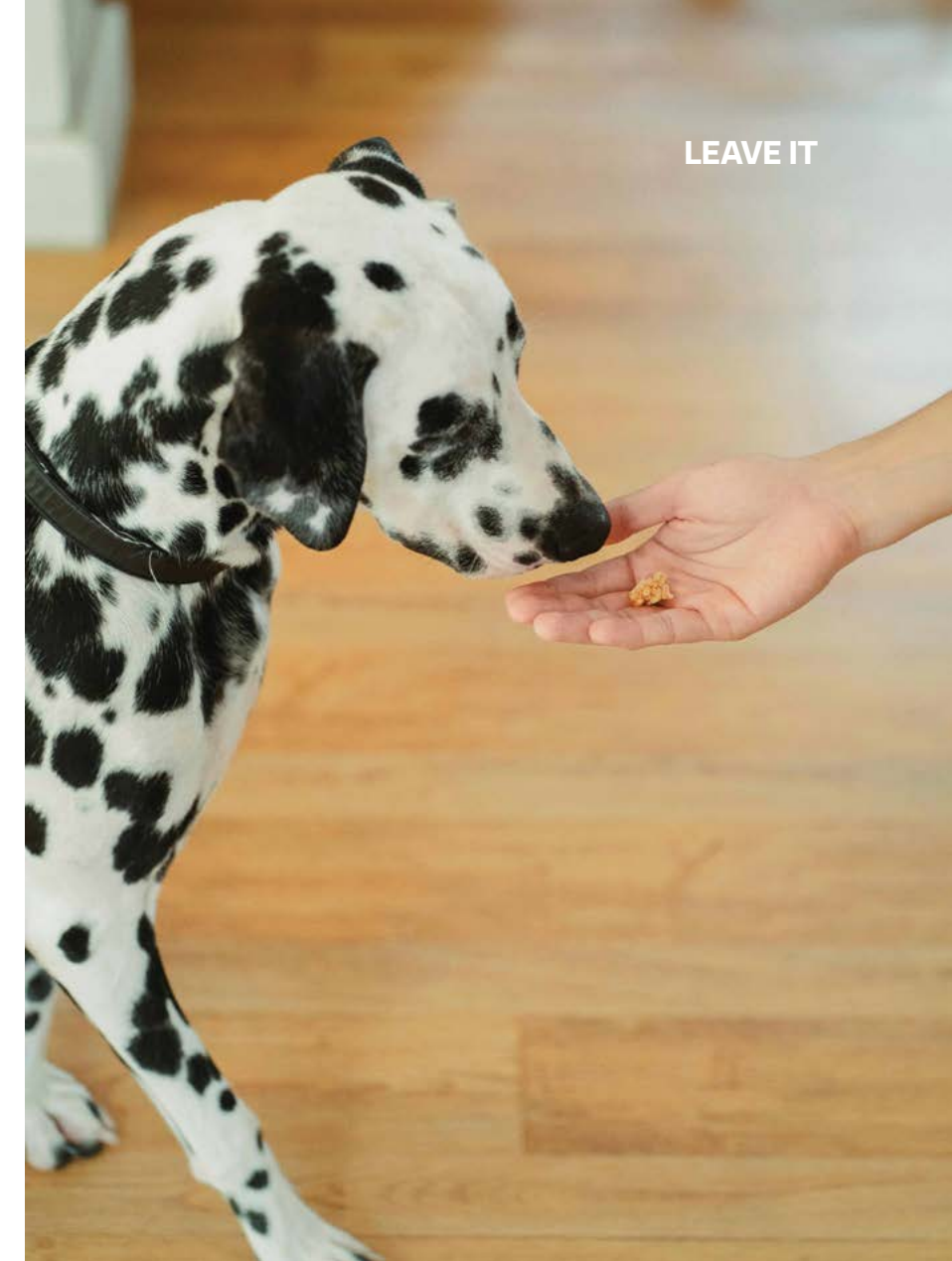
RVers are very friendly and meeting new people is part of the fun. However, if your dogs are a little exuberant about greeting new people, teaching them the cue "place" makes these greetings go more smoothly.

1. Get a dog mat and place it somewhere outside your RV door in the RV "porch" area.

2. Put some tasty treats on the mat and when your dog goes to it say, "Place." This helps her see the mat as a good place.

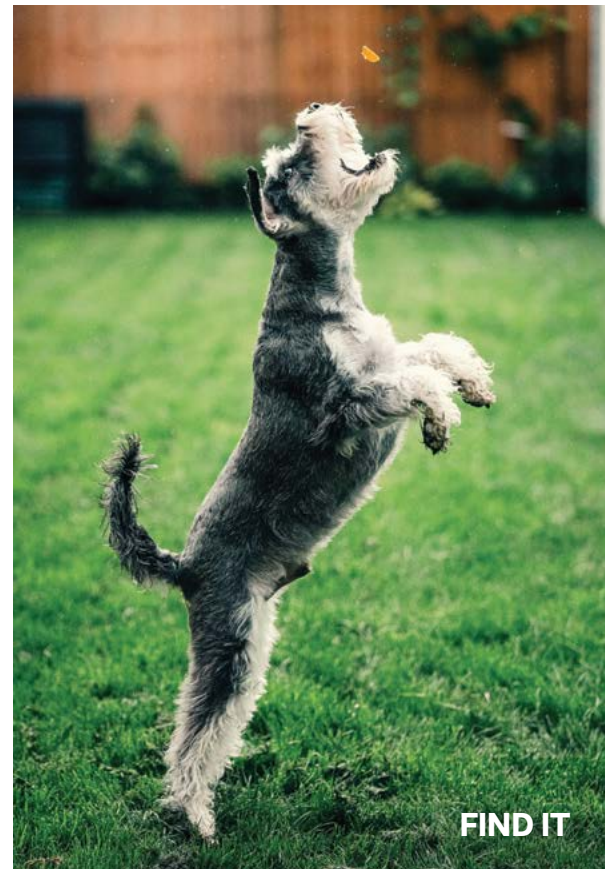
3. In order to pair the cue with the mat, say "Place" every time your dog goes over to the

LEAVE IT



PLACE





mat and sniffs it, puts a paw on it or lays on it, and give her a treat.

4. Next train your dog to sit or lay down on the mat and to stay there until you release her. (You can find training tips on Sit, Stay and Release at online training websites.)

Reminder: If your dog jumps on people, don't reward the behavior by giving her attention (even negative attention). I turn my back. When my dog is calm and sitting, I give her a treat.

FIND IT

This is my favorite cue for reactive dogs that get stressed or nervous around other dogs and often bark and lunge at them. Your intent is for your dog to associate strange dogs with good things.

READ DOG BODY LANGUAGE

Many RVers travel with their dogs, so learning to read dog body language can be helpful to know how your dog or a strange dog is reacting to different situations. Of course, there's an app for that. Check out the **Dog Decoder** app created by longtime dog trainer **Jill Breitner**.

1. Start with a bunch of high-value treats.
2. Watch your pup to see how close another dog needs to get before he starts to react — that is the trigger distance. Note this for the future.
3. Don't move closer to the strange dog, turn and walk away. Do this before your dog reacts.
4. In an RV park, you usually can't walk away. So, toss some high-value treats on the ground. Your dog will focus on gobbling up the treats rather than worrying about the strange dog. One trainer I worked with called it "raining treats."

Note: The treats must be extremely high value, something your dog cares about more than anything. What works best with my dogs is to rain the treats before they start to react. My dogs actually look at me when they see a strange dog, ready for the treats to rain down.

Although I've given the basic steps to teach these cues, I recommend working with a positive-reinforcement trainer to teach you and your dog these cues. Believe me, the better trained both you and your dogs are, the more enjoyable RVing will be. 🐾

Melissa L. Kauffman is the former editor of Dogster and Catster magazines. For the past decade, Melissa and her husband have traveled around the country in their RV along with their dogs and parrots.

HARNESS TRAINING FOR CATS

There's a name for today's travel-friendly cats — adventure cats. Cat parents socialize and train these cats to be comfortable in an RV, car or boat and to wear a harness and leash to hike a trail.

Typically, harness and leash training starts when they are kittens. However, if your cat is open to people and new adventures, you can try to harness train beyond the kitten stage. However, if your cat gets too stressed, stop.

Ready to try? Follow these steps:

- Choose a harness that your cat seems comfortable with and can't get out of. I like the vest-type harness that covers a cat's chest. Examples are **Sleepypod's Martingale Calming Harness for Cats** made of mesh — I use this one on my dogs — and the **Kitty Holster**, which is made of cotton.
- Before putting it on, get your cat used to the harness and leash by putting it in a familiar place or placing a cat treat on top of it.

• Once your cat is used to it, try to put it on your cat. Take your time. You may have to do this over and over. You don't want your cat to be frightened of the harness, so stop if he freezes or walks away and try again later.

• Once your cat accepts the harness, attach the leash. Do this several times until he is comfortable. Do this in your home.

• Practice leash walking your cat in the home for short periods of time. Walking a cat on a leash is different from walking a dog as your cat takes the lead and you follow.

• When your cat is comfortable walking on a leash inside the home, carry him outside. Keep outside sessions brief until he is comfortable.

• RV parks have a lot of things going on, so if your cat startles easily, take him to a more secluded spot before leash walking.

Some cats will never take to a harness and leash, so if any of this is too frightening, accept your cat for being the amazing indoor cat that he is. He can always hang out in the RV, checking things out from one of the windows.



CLASSY CLASS C



The Tiffin Wayfarer 25 LW is a sleek, modern and aerodynamic luxury motorhome with a smaller footprint.

BY STEVE BLUME

PHOTOS COURTESY OF TIFFIN MOTORHOMES



PHOTOS COURTESY OF TIFFIN MOTORHOMES

The **Wayfarer** is a Class C, but it doesn't look like one of them. What I mean by "them" is a coach with a big truck nose, a clunky bed that hangs out over the front, and cheap particle board cabinets inside. A friend has one of those, and he says that it is so loud that it's impossible to have a conversation with his wife. Not so with the Wayfarer. This thing is sleek, modern and aerodynamic. It's a Tiffin luxury motorhome, just with a smaller footprint.

There are four unique floorplans — 25 JW, 25 LW, 25 RLW and 25 RW — all constructed on the Mercedes Benz Sprinter chassis in Winfield, Alabama, just 45 minutes from Red Bay. Each model begins with 25 because they are all 25 feet, 8 inches long. The overall height is 11 feet, 4 inches, with an 80-inch interior height and 87-inch interior width.

Creative space planning around the living area, sleeping arrangements and galley makes each floorplan unique. A Murphy bed is a key component for expanding space in all models except the 25 LW, which has a fixed bed space. A single driver's side slide expands the living area on all models except



All Wayfarers come with an overhead bunk. On the 25 LW and 25 RW, you can opt for an entertainment center instead.

2024 WAYFARER 25 LW SPECIFICATIONS

STARTING MSRP approx. \$196,888

DIMENSIONS	
Overall length (approx.) ¹	25' 8"
Wheelbase	170.3"
Overall width ¹	90"
Overall height	11' 4"
Interior height	80"
Interior width	87"
Square footage (approx.)	146
Basement storage (approx.)	130 cu.ft.

WEIGHT LIMITS (in pounds)	
GAWR — front	4,410
GAWR — rear	7,720
GVWR	11,030
Hitch Rating	5,000
GCWR	15,250

CAPACITIES (in gallons)	
Fuel tank	24.5
DEF tank	4.8
Fresh water	32
Grey water	32
Black water	28
LPG tank	12

QUANTITIES	
Number of Slideouts	1

Sleeping Capacity ²	2 to 4
Sleeping Areas ²	2 to 4
Seat Belts	4
Seating Capacity ²	4

¹ The approximated coach width and length does not include side view mirrors.

² Dependent on furniture and dinette options.

Standard Chassis and Drivetrain: Mercedes-Benz® 3500XD dual wheel cutaway chassis; two-wheel drive; Mercedes-Benz® 2.0-liter 4-cylinder 211-HP diesel high output engine with 332 lb.-ft. torque; 220-amp alternator; Mercedes-Benz® 9G-Tronic automatic transmission; aluminum wheels; front and rear LT 215/85 R16 tires; (1) 12-volt flooded lead-acid chassis batteries; Lippert hydraulic leveling system with control panel; SumoSprings® ride assist system; front radiator; four wheel ABS brakes; manual parking brake; active brake assist (collision mitigation); active distance assist Distronic® (adaptive cruise control); attention assist; traffic sign assist; load adaptive electronic stability program (ESP); high-beam assist; active lane keeping assist

Standard Construction: seamless one-piece gel-coat fiberglass molded roof cap; one-piece molded gel-coat fiberglass front and rear caps

Standard Electrical: liquid propane (LP) coach; 4-kilowatt RVMP LP generator; 2,000-watt Pure Sine Wave inverter; (2) 12-volt flooded lead-acid house batteries; Spyder Controls Multiplex System; Firefly Integrations Mira Module; interior entryway Spyder System main monitor; additional Spyder System switch panel; (1) 15,000-BTU air conditioner with heat pump; wall-mounted Thermostat with built-in temperature sensor; prep for solar panel; SmartPlug® detachable 30-amp shore power cord; HD over-the-air antenna; park cable and ground satellite hook-up; prep for in-motion satellite; HDMI ports; Mercedes-Benz® wireless internet access; 12-volt breaker panel; 12-volt disconnect switch; inverted outlets for CPAP machine in bedroom; ground-fault circuit interrupter (GFCI) outlets at galley, lavatories and sewer bay; 110-volt exterior receptacle; Surge Guard® transfer switch; USB receptacles throughout coach

Standard Plumbing: water heater bypass system; Aqua View Shower Miser™; water filter; water pump; low-point water drain lines; black holding tank flush system; gravity water fill; heated fresh and holding tanks via tank pads and heat duct; tank level monitor system; centralized exterior sewer bay with gravity black and grey evacuation ports; exterior rinse hose with shower head; fresh water hookup for city water and tank fill; sewer hose storage

Standard Exterior: full-body paint with (2) layers of clear coat; high performance protective film on front cap, front cab and other select areas; (1) Girard® side-mounted powered patio awning with Integrated LED lighting and built-in speakers; lockable handles on compartment doors; motion-sensor lights in cargo bay; flush-style tinted windows with tip-out feature; exterior patio light; fog lights; driver and passenger side front cap exterior entry light; heated, electrically adjustable side-view mirrors; lightweight entry door; entry door grab handle; mud flaps

Standard Interior: handcrafted overhead

cabinetry; mild steel step well with composite steps; solid surface galley countertop; hand-crafted slide-out fascia; soft touch vinyl ceiling; dimmable LED lighting; accent lighting in lounge, galley and bedroom; carbon monoxide detector; LPG leak detector; smoke detector; fire extinguisher; solar and privacy shades; soft-closing drawers; powered roof vents; interior grab handle at entry door; stereo system with separate speaker zones; (2) captain's chair lounge cushions

Standard Driver's Compartment: black leather adjustable driver and passenger seats; swivel bases for driver and passenger seats; heated driver and passenger seats; leather-wrapped steering wheel with integrated controls; keyless start; windshield with filter band; rain sensor for windshield wipers; automatic LED headlights; emergency call system; smartphone integration for Apple Carplay® and Android™ Auto; Mercedes-Benz® MBUX multimedia system with 10.25" touchscreen; ceiling-mounted speakers; tray for smartphones with charging ports; intelligent navigation; auxiliary start switch; powered windows; door-mounted driver and pas-

senger assist handles; powered door locks; vinyl floor covering; driver, passenger and windshield thermal barrier shades; instrument cluster with color display; front overhead bunk

Standard Kitchen: stainless steel convection microwave; one-burner induction cooktop or liquid propane cooktop with built-in cover; stainless steel single bowl sink and faucet with built-in sprayer; galley overhead cabinets; sliding countertop extension within drawer (select units only); task lighting; solid surface galley countertop

Standard Bedroom: (2) twin mattresses (32"x76"), combines into king bed (86"x76"); pop-up closet storage; LED reading lights; overhead cabinets; wardrobe

Standard Bathroom: one-piece molded fiberglass shower (24"x32"); porcelain vessel sink with chrome faucet; handheld shower head; shower skylight; towel and toilet paper holders; roof vent fan; oversized mirror; base cabinet

Standard Driver's Side Furniture: 52" tri-fold sofa bed

Options in the Wayfarer include theater seating (right) or a sofa with a hide-away bed.

The kitchen (opposite page) includes a one-burner induction cooktop or a liquid propane cooktop under the microwave.



the 25 RLW, which does not have a slide. Liquid propane (LP) is the standard coach setup, but there are other options in components.

Unlike many competitors, the entire front cap is molded fiberglass, the roof is one-piece fiberglass, and the rear boasts a one-piece cap. The bay doors are the same ones you find on other Tiffin coaches, double latch side opening doors. This is quality from head to tail.



Sleep areas in the Wayfarer feature a queen-size Murphy bed or a king bed (two twin mattresses).

OPTIONS FOR OWNERS

Tiffin paint quality is legendary, and the Wayfarer is no exception. The process is fully controlled in the custom paint booth in Winfield with an eight-step full-body paint system sealed with two layers of clear coat with ultraviolet protection. There are two pattern choices with four color combinations — Silver Sands, Sea Mist, Obsidian and Sand Drift.

Owners can choose from two interior decor options — Mink or Champagne — which apply to wall coverings, flooring, window fabrics, countertops and bedding. The three cabinet options are White Linen, Sandstone and Shadow.

A LINEUP OF COACHES

Rarely do you have an opportunity to go in nine open Wayfarers lined up end to end, but that's exactly what I was able to do at the Florida RV Supershow in Tampa in January. I also nabbed the perfect Tiffin tour guide, Chase Davis, Regional Sales Manager for Class C. "If you've ever considered purchasing a new Wayfarer, changes are coming this summer that may influence your timing," he said.

The 2024 models are built on the Mercedes-Benz 3500XD dual wheel cutaway chassis with a 3.0-liter V6 turbo 188-HP diesel engine

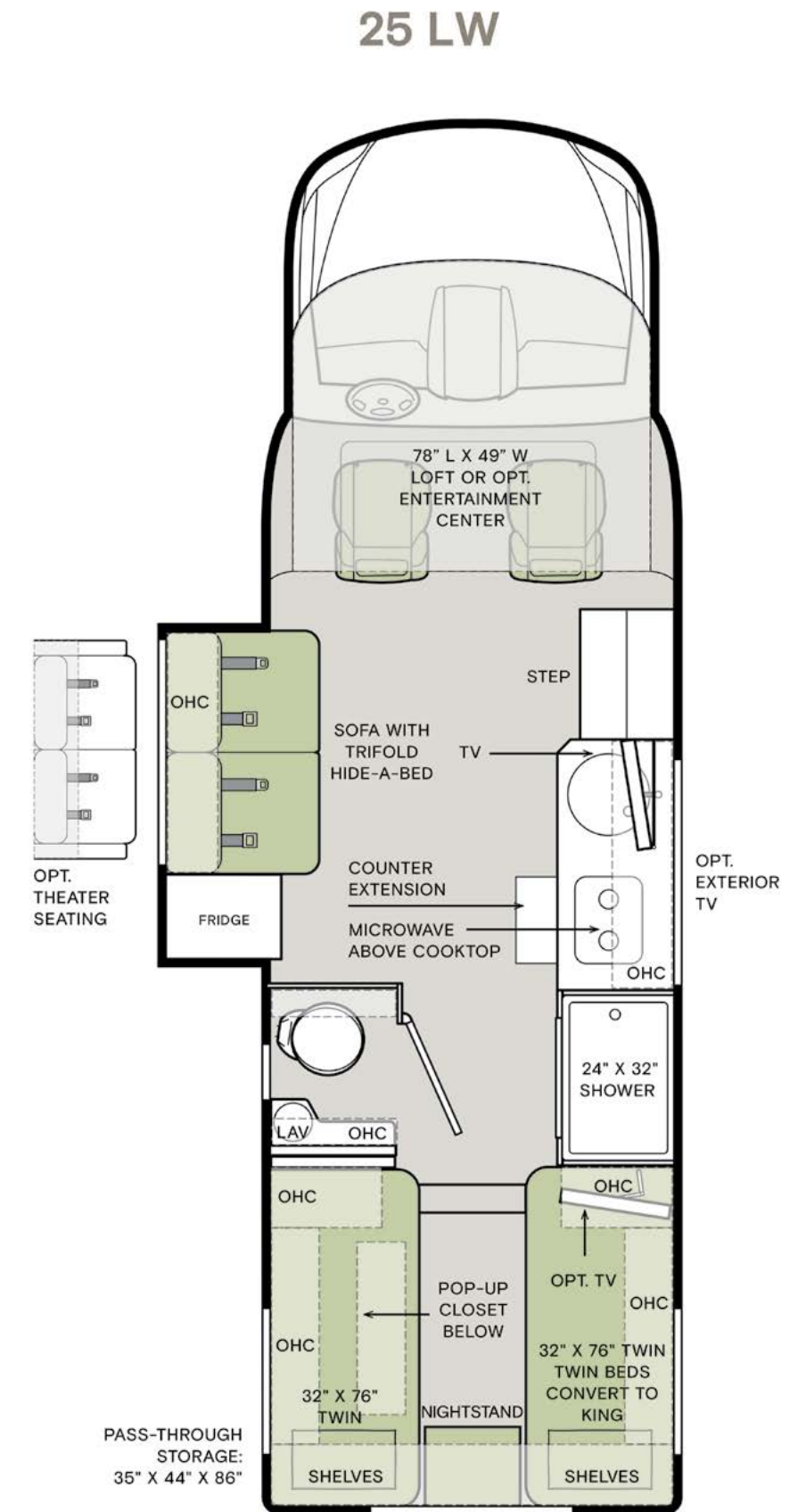


with 325 lb.-ft. of torque. "Mercedes has made a change and will no longer offer this chassis and engine combination, replacing it on all 2025 Wayfarer models with a more powerful 4-cylinder 211-HP diesel engine with higher torque and better MPG," Davis said. "The towing capacity will still be 5,000 pounds. The 3.2-kilowatt Onan quiet diesel generator is the standard today. However, in the 2025 models, the generator fuel line can no longer run directly into the diesel tank, requiring a switch to an LP generator. We find buyers are going both ways on the model years because of this change."

I responded, "Okay, Chase, I'm 6'4" and I'm concerned about the Murphy bed. I'm an early riser, so I want to get up, make my coffee and have a place to hang out without disturbing my wife. I also want a place to store our folding e-bikes. Which model would be best for us?"

INSPECTING THE 25 LW

Without hesitation, he walked me straight to the 25 LW. He grasped the passenger-side door handle as if to open it. "Like me, you wear a ring," Davis said. "To prevent scratches from rings and keys, we use the same clear protective film under this handle that we have on the front of the Wayfarer."



The Wayfarer has a one-piece molded fiberglass shower and a beautiful porcelain vessel sink.



That is quality and attention to detail. The driver and passenger doors have fixed step rails for added stability when entering or exiting the cockpit. I admired the smooth flowing lines as we walked around. Side-view cameras are listed as an option, but most dealers include it when placing orders. Opening the driver door exposed the Mercedes-Benz cockpit I expected, with black leather adjustable heated driver and passenger seats that swivel around to the living area. The leather-wrapped steering wheel features fully integrated controls. The electronic dash screams technology with everything at your fingertips. I quickly determined my small wife would feel very comfortable driving a Wayfarer.

Opening the bay doors, I saw the Timberline hydronic heating system. "If you have a Tiffin with an Aqua-Hot, think of this as a smaller one, heating both water and air, and it requires no propane. Truma On Demand is an option but requires propane," Davis said.

When we got to the much taller back bay door, Davis smiled in anticipation of the great reveal, then he opened the door, almost with a big "ta-daa!" This pass-through rear storage compartment on the 25 LW is huge, measuring 35x44x86 inches, and could easily store our folding e-bikes!



Any RV owner understands that weight is always a factor, so before I started filling it up in my head, I reminded myself that luxury and quality come at a price, which in this case squeezes the cargo capacity down to 940 pounds. While I was mentally loading up that compartment, I made my way under the Girard side-mounted powered patio awning with integrated LED lighting and built-in speakers. It extends the entire length of the coach, creating a very large entertainment area. With the optional outdoor TV, I could envision hanging out there on game day. When retracted, the solid enclosure is neat and tidy.

The entry door just behind the passenger seat is true Tiffin — solid and secure. The fixed steps going inside have a removable tread for easily servicing the house batteries located underneath. Two 12-volt flooded lead-acid batteries are standard, with two 12-volt lithium batteries optional. On the right is the Spyder Controls Multiplex panel within easy reach, and the Firefly Integrations Mira Module enables you to control it with your cell phone.

Over the cockpit is either a small bed or a great storage area. A removable ladder provides access, but when not in use, the center section rises out of the way to provide extra headroom. An option is a skylight rather than the bed.

LIVING SPACES

When setting up and settling in, the control panel activates the Lippert hydraulic leveling system. Extend the slide, turn the front chairs around and add the small oval table for a functional dining area. Insert the blackout panels up front in the windows and windshield to keep out heat and provide privacy. The fresh, grey and black tanks are all around 30 gallons, which with water management is plenty to stay out for several days. All windows inside have day and night shades. On warm days, set the wall-mounted thermostat to turn on the 15,000-BTU air conditioner. The 25 LW comes standard with a sofa containing a 52-inch trifold hide-a-bed, but theater seating is an option. Choose a 28-inch TV mounted on the opposing wall or a 29-inch TV in the overhead bunk.

While the other Wayfarers have a 6.5- or 8-cubic-foot, 12-volt or gas-electric refrigerator, the 25 LW is limited to 5-cubic-foot one. Davis explained, "If you want more space here, you have to take it from somewhere else. The bath? The bedroom? The space is finite."

For cooking, there is either an LP cooktop with a built-in cover or a single burner induction unit. A stainless-steel convection microwave is mounted above. A stainless-steel single bowl sink and faucet with built-in sprayer provide elegant functionality in the solid surface galley countertop. Even more work space comes from a solid surface sink cover and countertop extension.

In showers, most competitors use panels with seams, but Tiffin uses a 24x32-inch one-piece molded fiberglass unit to guarantee no leaks. The cost may be higher, but this is another example of quality. A Shower Miser preserves precious water resources and a skylight funnels in light. Across the hall is the half bath with a toilet, porcelain vessel sink and lighted mirror.

This back area is the reason I came to the 25 LW. As I mentioned earlier, this is the only Wayfarer without a Murphy bed. A "U" shaped platform with large flat cushions can be configured as two twins (32x76 inches), another lounging area or a huge wall-to-wall bed by adding the middle slats and remaining cushions. Those beautiful Tiffin wall cabinets encircle the room above. An added feature is that much of the electrical and plumbing below can be easily accessed under this platform.

OTHER FLOORPLANS

25 JW — A queen-size Murphy bed and sofa are in the slide on the driver's side facing a lift TV and fireplace, creating a larger front living space. The galley comes next on that side with a closet containing washer/dryer prep. A very large bathroom is in the back, spanning the entire width of the coach.

25 RLW — The only Wayfarer with no slide, this model keeps the galley up front and adds two facing passenger seats. The lounge/sleeping space is in the rear with a 58x74-inch Murphy bed.

25 RW — The living space is up front, with either a sleeper sofa or theater seating on the driver's side, followed by a queen-size Murphy bed with galley on the opposing side. A very large bathroom is in the back, spanning the entire width of the coach.

As I went through all the Wayfarers models, I realized so many things that I really like on every single floorplan. To learn more about the Wayfarer, check out tiffinmotorhomes.com or visit your local Tiffin Motorhomes dealer. 🚐

A retired entrepreneur, Steve Blume and his wife, Nancy, spend half the year on the road and the other half at their Brentwood, Tennessee, home. His articles have appeared in newspapers and magazines on multiple topics.



Tiffin motorhomes always have storage galore, and the Wayfarer is no exception.

DESTINATION: ST. LOUIS, MISSOURI

Meet Me in *St. Louis*

A world of adventure awaits in this Midwest city considered to be the "Gateway to the West."

ARTICLE AND PHOTOGRAPHS BY NICOLE SIPE



You can see 30 miles on a clear day from the top of the Gateway Arch, which was built in the 1960s.

Located on the banks of the Mississippi River, St. Louis is the second-largest city in Missouri, but it is first-rate in the abundance of attractions you'll find in this humble Midwest locale. Known as the "Gateway to the West," St. Louis offers plenty of options for every type of traveler, from world-class museums to professional sports to outdoor adventures and foods that you can only find in the Lou!

GATEWAY ARCH NATIONAL PARK

When you think of St. Louis, you probably think of the Gateway Arch, the world's tallest arch and the unofficial symbol of the city. **Gateway Arch National Park** is where you can get up close to this stainless-steel monument, and even take an eight-minute tram ride up 630 feet to the top. As you ascend, you'll learn about the history of the arch and its significance to the region.

At the top, you'll witness breathtaking views of the city and the Mississippi River. Back on solid ground, you'll want to explore the **Museum at the Gateway Arch**, featuring



Learn about Native Americans, explorers and pioneers at the Museum at the Gateway Arch (top).

Capture some great views of the Gateway Arch from the water on a Gateway Arch Riverboat tour (right).



six themed exhibit areas that trace the story of the Native Americans, explorers and pioneers who made America possible.

Another way to appreciate the Gateway Arch is to step aboard the **Gateway Arch Riverboats**, which offer scenic cruises along the Mississippi River and picture-perfect views of the arch and city skyline from the water. As you float along the river on a replica 19th-century paddle-wheel riverboat, you'll be transported back in time, imagining the days when steam-powered vessels ruled the waterways.

FOREST PARK

Forest Park is one of the largest urban parks in the United States — even bigger than New York City's Central Park! It spans more than 1,300 acres and is home to many of the city's major cultural institutions, including the Saint Louis Zoo, the Saint Louis Art Museum, the Missouri History Museum, the Saint Louis Science Center, the Muny and others. Amazingly, many of these museums and attractions in Forest Park can be visited free of charge!

Saint Louis Zoo: A highlight of Forest Park is the **Saint Louis Zoo**, a world-class destination for animal lovers of all ages. This

renowned zoo is dedicated to wildlife conservation and is home to more than 14,000 animals from around the world, many that are rare and endangered. Don't miss visiting Sea Lion Sound, a popular exhibit right in the heart of the zoo, where you can walk through an underwater tunnel into the seal and sea lions' habitat. (1 Government Dr.; 314-781-0900; stlzoo.org; free admission)

Saint Louis Art Museum: For art aficionados, a visit to the **Saint Louis Art Museum** (SLAM) is a must. This museum houses an extensive collection of artwork that spans more than 5,000 years, from almost every culture and time period. SLAM is large, and you could easily spend all day at this free museum. Make sure you visit Edward Degas' "Little Dancer of 14 Years" sculpture, a visitor favorite.

The art continues outdoors at the **Grace Taylor Broughton Sculpture Garden**, located adjacent to the Saint Louis Art Museum. This peaceful garden is lined with walking paths and benches, with contemporary and 20th-century sculptures throughout the outdoor space. It's a great place to appreciate art, nature and design all at once. (1 Fine Arts Dr.; 314-721-0072; slam.org; free admission)

Missouri History Museum: Get a peek into the history of St. Louis at the **Missouri History Museum**, where visitors can experience the state's past with interactive displays and native artifacts. Learn about St. Louis' baseball history, see a replica of aviator Charles Lindberg's "The Spirit of St. Louis" monoplane, explore life on the Mississippi River, learn about the area's Civil Rights movement and much more. Little learners will like the museum's History Clubhouse exhibit, nearly 6,000 square feet of hands-on and immersive history experiences. Here, families can travel back in time to the 1904 World's Fair, pilot a river steamboat, and dress up and play house in the ancient city of Cahokia. There's something for all ages. (5700 Lindell Blvd.; 314-746-4599; mohistory.org; free admission)

Saint Louis Science Center: Visitors can "connect with curiosity" at the **Saint Louis Science Center** with a wide range of exhibits about the wonders of science. Explore Earth's ecosystems, unravel the mysteries of the human body, attend a live science demonstration, or catch a show at the OMNIMAX Theater for a full day of exploration and discovery.

5 CLASSIC ST. LOUIS FOODS

St. Louis is a unique foodie destination: The city boasts its own spin on pizza, pork, pastries, ravioli and lots more. Indulge in St. Louis' diverse food scene by trying some of the iconic foods that make the city so delicious.

Toasted Ravioli: This signature snack is basically what it sounds like: breaded and fried ravioli filled with meat, cheese or spinach. It's a beloved St. Louis staple, and you shouldn't leave the city without trying it. You'll find many restaurants serving up authentic toasted ravioli in the Italian neighborhood known as **The Hill**. Or for a different spin on the classic, visit **STL Toasted** at **City Foundry STL**, a fun and eclectic food hall in Midtown, where you'll find options like buffalo chicken and gooey butter cake toasted ravioli!



Gooey Butter Cake: Speaking of gooey butter cake, this decadent treat holds a special place in locals' hearts, with roots tracing back to the 1930s. Legend has it that the gooey texture and sweet, buttery flavor of gooey butter cake was born from a "happy accident" in the kitchen, when a St. Louis baker reversed the proportions of butter and flour. **Gooey Louie** is one place to get a great gooey butter cake (that's all they sell!), but you'll find this dessert in many restaurants, bakeries and grocery stores around town.

St. Louis-Style Pizza: The Gateway City offers a unique spin on pizza that has become a local treasure. St. Louis-style pizza is a thin-crust creation that has a distinct flavor and texture, setting it apart from other regional styles. The taste comes from the unique combination of Provel cheese — a processed cheese blend of cheddar, Swiss and provolone — and a cracker-thin crust. Instead of pie-like wedges, St. Louis-style pizza is cut into squares. You can find great pizza all around the city, including at **Adriana's** and **Guido's** in The Hill neighborhood, or **Pirrones**, with two locations just outside of St. Louis proper.

St. Louis Barbecue: Fun fact: St. Louis is said to consume more barbecue sauce per capita than any other city in the U.S. — nearly twice as much as average Americans! Two regional dishes, pork steaks and St. Louis-style ribs, could account for why the Gateway City is the sauciest state in the nation. Find great barbecue at **Pappy's Smokehouse**, which has been named Best Ribs in America by the Food Network and Best BBQ in Missouri by Southern Living. **Ms. Piggies' Smokehouse**, whose jumbo pork steaks have been featured on the Travel Channel, is a great place to find steaks and ribs, as well.

Frozen Custard: Frozen custard is another beloved sweet treat with deep roots in St. Louis. This creamy, cold dessert is a little different from regular ice cream because it includes egg yolks, creating a rich and velvety texture. **Ted Drewes**, which has been operating in St. Louis since 1929, is an iconic place to get a scoop or cone. **Andy's Frozen Custard**, which started in Missouri and has since expanded to 10 states, is another hometown favorite.



The Saint Louis Art Museum, which opened in 1879, is in Forest Park. In front is a statue of Louis IX of France, the namesake of the city.

The Science Center is connected via a Skybridge to the **McDonnell Planetarium**, a state-of-the-art facility where you can learn about the cosmos. This building has three floors of space, aviation and spaceflight exhibits, and houses the largest artificial sky in the Western Hemisphere. See genuine space capsules, look through high-powered telescopes, experience a laser light show, or even take a yoga class under the stars (for an additional fee). (5050 Oakland Ave.; 314-289-4400; slsc.org; Free admission)

The Muny: No visit to St. Louis would be complete without experiencing a live, outdoor performance at the **Muny**, America's largest and oldest outdoor musical theater. Enjoy Broadway-caliber productions ranging from the classics to contemporary hits while lounging under the stars. Tickets for individual performances start at \$21, but the Muny offers the last nine rows (more than 1,400 seats) to the public for free. To snag a free seat, guests are advised to arrive early — they are available on a first-come, first-served basis. (1 Theatre Dr.; 314-361-1900; muny.org)

ST. LOUIS UNION STATION

The first train pulled into the **St. Louis Union Station** in 1894, and the last one departed in 1978. Now, this iconic landmark has been transformed into a vibrant entertainment destination.

One of Union Station's newest attractions is the **St. Louis Aquarium**, which opened in 2019. The aquarium features dozens of exhibits, highlighting everything from local river ecosystems to shark habitats.

There's lots more to experience at Union Station, including the **Grand Hall**, where you can



JBAYARD / ADOBE STOCK



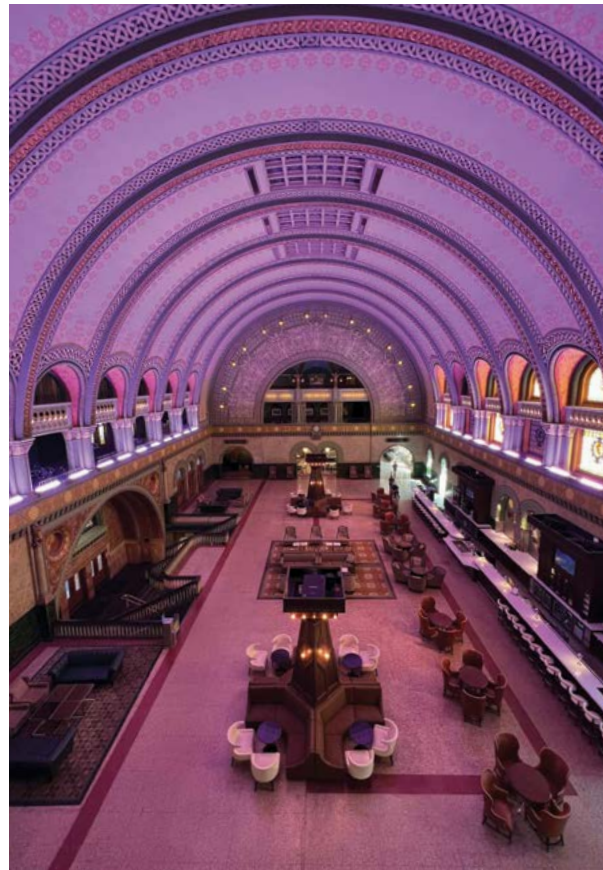
EUROBANIS / ADOBE STOCK



JHVEPHOTO / ADOBE STOCK

Forest Park is home to the **Muny** (top), the oldest and largest outdoor musical theater in the country; the **Saint Louis Science Center**, where you can see this **F/A-18B Hornet** flown by the **Blue Angels** (above); and the **Saint Louis Zoo** (left).

The Grand Hall at the St. Louis Union Station, has been beautifully restored and features the original terrazzo floor and breathtaking stained glass.



enjoy a free light show on the soaring ceilings every hour. Grab a bite at one of the several restaurants located around Union Station, or take a ride on **The Wheel**, a towering, 200-foot-high Ferris wheel that offers panoramic views of the city from enclosed, climate-controlled gondolas.

BUSCH STADIUM

For sports enthusiasts, a visit to **Busch Stadium**, home of the St. Louis Cardinals, is a must. Located in the heart of downtown St. Louis, this iconic baseball stadium boasts a rich history and an electric atmosphere on game days. Cardinals fans are a passionate bunch, so if you visit during baseball season (April through September), you'll be treated to a great time cheering along with thousands of devoted fans. Even if you're not able to catch a game, consider taking a guided tour of this legendary stadium to learn more about its storied past and experience the energy that encapsulates the spirit of St. Louis. 🚗

Nicole Sipe is an editor for a Midwest parenting magazine and a children's book author. Born and raised in Southern California, Nicole traded the city and sun for corn and creeks, and now lives in Indiana with her husband, two sons and dog.

RV PARKS AND RESORTS IN ST. LOUIS

Need a welcoming place to call home for a few days? St. Louis boasts some amazing RV parks and resorts that cater to all manner of travelers. Here are five that made our list!

DraftKings at Casino Queen RV Park: When you want the leisure of an RV park but the excitement of a casino, **DraftKings at Casino Queen RV Park** is an ideal option. Enjoy a newly renovated bath house and common area, plus access to an indoor heated swimming pool, multiple on-site restaurants, and a fitness center. Bonus: You're just steps away from gaming and sports betting action! (200 Front St., East St. Louis; 800-777-0777; draftkingsatcasinoqueen.com)

Cahokia RV Parque: Just across the Mississippi River on the Missouri/Illinois border is **Cahokia RV Parque**, located a short five-minute drive to The Arch. You'll find amenities like an on-site laundry room and outdoor swimming pool (open seasonally), as well as a shuttle that will take you to Forest Park and downtown St. Louis attractions. (4060 Mississippi Ave., Cahokia, IL; 618-332-7700; cahokiarvparque.com)

Safari RV Park: Located 10 minutes away from downtown St. Louis, **Safari RV Park** offers manicured spaces with full hookups. You'll find laundry and shower facilities, as well as free Wi-Fi and a quiet place to relax and set up a home base. (5110 Collinsville Rd., East St. Louis; 618-271-0955; safari-rv-park-stl.com)

Sundermeier RV Park: **Sundermeier** is located smack-dab in a historic town just 20 minutes west of St. Louis, where you'll be treated to seasonal fairs and festivals, frontier re-enactments, holiday activities, Christmas traditions and more. The RV park offers back-in sites with daily and weekly rates. (111 Transit St., St. Charles; 636-940-0111; sundermeierrvpark.com)

St. Louis West / Historic Route 66 KOA Holiday: If you're looking for an RV park that's outside the hustle and bustle of the city, then head 30 minutes west to the **St. Louis West KOA**. Located right off Route 66, guests can enjoy planned activities, outdoor swimming, basketball courts and gem mining. (18475 Old US Hwy 66, Eureka; 636-257-3018; koa.com/campgrounds/st-louis-west)



Busch Stadium (above) is home to the **St. Louis Cardinals**, which was founded in 1882. The team has won 11 World Series.

The St. Louis Aquarium (left) is a recent addition to the **St. Louis Union Station**.



A Versatile **ADVENTURE VAN**

Go off-road with all the comforts of home with the small and powerful Tiffin GH1.

BY STEVE BLUME

PHOTOS COURTESY OF TIFFIN MOTORHOMES

I was first in line when the gates opened at the Florida RV Supershow, and I immediately hoofed it to where the new **Tiffin GH1** would be unveiled. There it was, impossible to miss. It was small, unlike anything around it, and it was subdued, not flashy, but clearly powerful. It was like a little dog with an attitude, standing arrogantly in the middle of all those Class As. It's as if the GH1 boldly announced, "There's a new kid on the block."

Tiffin is placing a stake in the ground and announcing to the world that it is a player in Class B vans with the innovative GH1, which is a combination of proven performance — the Mercedes Benz Sprinter 2500 AWD chassis — and Tiffin engineering and quality manufacturing. An edgy new Tiffin logo on the GH1 is like an exclamation point to emphasize this highly touted coach.

POWER AND LUXURY GUARANTEED

Mercedes Benz uses a diesel high-output 4-cylinder engine for perfect power and adds a 220-amp alternator to charge the 540-amp hour lithium-ion batteries while on the way to your favorite spot. When it comes to driver comfort, you have the same bells and whistles that you get on a luxury vehicle — lane assist, adaptive cruise control, 360-degree cameras, automatic



PHOTOS COURTESY OF TIFFIN MOTOR



The GH1's size and power makes it perfect for a quick outdoor activity or a weekend camping trip.

2025 GH1 SPECIFICATIONS

STARTING MSRP

approx. \$185,000

Overall length (approx.)	19' 6"
Overall width	92"
Overall height	10'
Interior height	75"
Interior width	69"

WEIGHT LIMITS (in pounds)

GVWR	9,050
Hitch Rating	5,000
GCWR	13,930

CAPACITIES (in gallons)

Fuel tank	24.5
DEF tank	4.8
Fresh water	26
Grey water	22
Cassette Toilet Tank	4.5

QUANTITIES

Sleeping Capacity	2
Sleeping Areas	1
Seat Belts	2 to 4
Seating Capacity	4

Standard Chassis and Drivetrain: Mercedes-Benz® 2500 Sprinter Cargo Van chassis; Mercedes-Benz® 2.0L 4-cylinder Twin Scroll Turbo 211-HP diesel engine with 332 lb.-ft. torque; all-wheel drive; 220-amp primary / 250-amp secondary alternators; Mercedes-Benz® 9-speed shifttable automatic; custom off-road Tiffin Adventure Wheels; Fox shocks 2.5" rear shocks replacement with front auxiliary shocks; front and rear LT 245/70R 17 BF Goodrich® All-Terrain T/A® KO2 tires; (1) 12-volt AGM chassis battery; front radiator; four wheel ABS brakes; manual parking brake; active brake assist (collision mitigation); Active Distance Assist Distronic® (adaptive cruise control); hill start assist; attention assist; traffic sign assist; load adaptive electronic stability program (ESP); high beam assist; active lane-keeping assist; tire pressure monitoring

Standard Electrical: hydronic heating & electronic appliance-equipped coach; 3,000-

watt Victron Pure Sine Wave inverter/charger; 540-amp hour lithium-ion battery kit; (1) 15,000-BTU Green Eco-Cool air conditioner with heat pump; ; wall-mounted Thermostat with built-in temperature sensor; Aqua-Hot® 125 modular diesel heat exchanger (provides both heated air and water); SmartPlug® detachable 30-amp shore power cord; Mercedes-Benz® wireless internet access; roof port wiring access for aftermarket electronics; 12-volt breaker panel; 12-volt disconnect switch; USB receptacles throughout coach; wire prep for Starlink® Pro; soft start and Bluetooth capability

Standard Plumbing: Aqua-Hot® 125MD heat exchanger (provides both heated air and water); water heater bypass system; water filter; water pump; additional water inlet on exterior for city water connection and tank fill; low-point water drain lines; gravity water fill; SeeLevel™ tank monitor; fresh water hookup for city water and tank fill; sewer

hose storage; galley sink drain macerator pump; fresh water recirculation system (Showermiser™)

Standard Exterior: (1) Girard® side-mounted-powered patio awning with integrated LED lighting; low-profile roof rack; tinted acrylic windows; single-row low-profile light bar; exterior patio light; fog lights; LED lights under exterior running boards; heated, electrically adjustable side-view mirrors; screen door package (includes screens for rear door and passenger side sliding door); fixed side-mounted all-welded ladder; rear mud guards; low-profile running board with 12-volt lighting; fold-down table; ARB on-board air compressor with front and rear chucks

Standard Interior: Stargazer interior décor package; TecnoForm® cabinetry; grey nickel-plate thermoplastic polyolefin Lonseal® flooring; dimmable LED lighting; interior multicolor accent lighting; carbon monoxide

detector; LPG leak detector; smoke detector; fire extinguisher; solar shades; powered roof vents; solid surface countertop

Standard Driver's Compartment: heated leather seats with electronic controls; swivel bases for driver and passenger seats; leather-wrapped steering wheel with integrated controls; keyless start; rain sensor for windshield wipers; automatic LED headlights; parking package with 360° view camera; interior rear-view mirror; crosswind assist; driver and passenger air bags; blind-spot monitoring system; emergency call system; smartphone integration for Apple Carplay® and Android™ Auto; Mercedes-Benz® MBUX multimedia system with 10.25" touchscreen; tray for smartphones with charging ports; intelligent navigation; powered windows; door-mounted driver and passenger assist handles; powered door locks; instrument cluster with color display

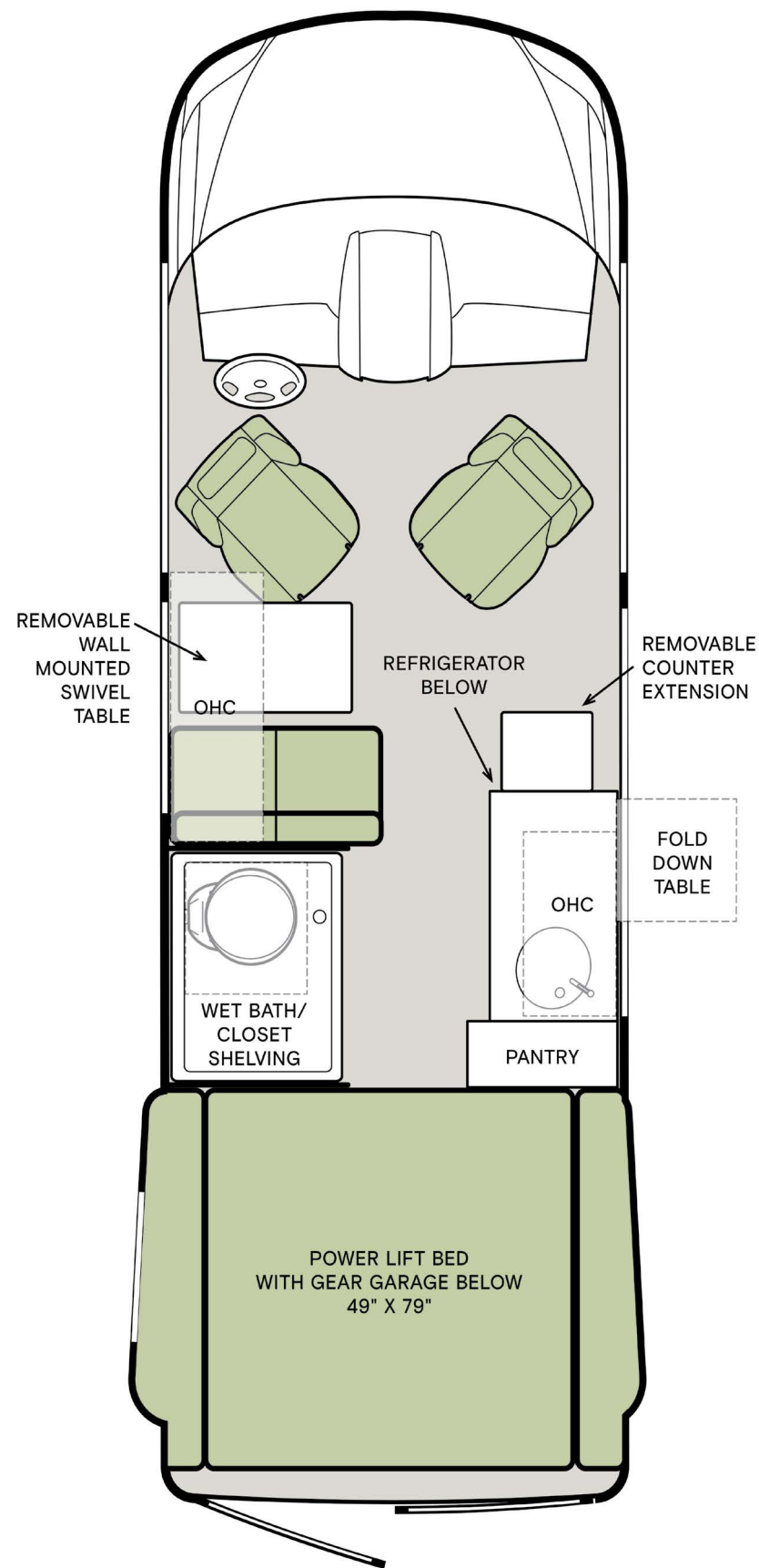
Standard Dinette and Living Area: space-saving, fully adjustable, luxury jump seat with Ultrafabrics® Montage (seating for 4); removable, wall-mounted swivel table and overhead cabinets

Standard Kitchen: 12-volt, 3.1-cubic foot refrigerator with freezer and integrated whiteboard; portable single-burner induction cooktop; 12-volt roof vent fan; stainless steel single-bowl sink and faucet with built-in sprayer; galley overhead cabinets with rigid aluminum frame; removable counter extension

Standard Bedroom: 49"x79" power lift bed with gear garage below

Standard Bathroom: 24"x36" wet bath with toilet platform; handheld shower head; shower skylight; cassette toilet; dry-roll toilet paper dispenser; roof vent fan; water-tight storage compartment; fresh water recirculation system (Showermiser™)

GH1



windshield wipers and headlights, and even automatic braking if you go into a turn too fast. Everything about the cockpit, including the leather heated power seats with lumbar support and electronic display, is true Mercedes Benz. The all-wheel drive is electronically controlled, making instant handling decisions for you. Off road tough does not mean it has to ride rough.

I walked to the front of the GH1 and admired the high clearance. I imagined driving down that old logging road through the woods back home in Tennessee, those beefy tires easily navigating puddles and ruts. Don't worry about overhanging branches that could leave a scratch because the same Diamond Shield that protects all Tiffin coaches is used on the front here as well. The GH1's integrated roof rack locks down everything on top, ensuring that after miles of off-roading, the weight will stay on the rack. Do your mountain bikes need air in the tires? The onboard air compressor has quick-connect lines running under both the front and rear bumpers.



CUSTOMIZE TO YOUR LIKING

I opened the driver's door, which revealed the fuel tank access panel cleverly hidden in the frame. No fuel tampering is possible here. I continued down the driver's side to the fixed mounted ladder, which allows solid access to the roof.

Van life is huge in America, and just like owning a Jeep, the fun part is customizing it. Owners can make the GH1 their own, both inside and out. Racks, brackets, soft-sided bags and just about any aftermarket accessories you can imagine are available.



On the GH1, the side-mounted powered patio awning extends your living space. Inside, there's a single-burner induction cooktop and a power-lift bed in the back.

The rear doors were open, and the power lift bed was in the storage position up against the ceiling. When raised, it exposes the 49x79-inch gear garage below, with a track system in the floor to anchor bikes or other gear. Once again, you can customize this space with aftermarket options.

INSIDE COMFORT

I circled back to the passenger side doors and couldn't wait to step inside. The running board is slip-resistant with underlighting.



To the left of the entrance, a mounted outdoor patio table drops down to your desired height. The GH1 comes with a portable single burner induction cooktop, so this is a great place to cook outside. The Girard premium one-touch awning with LED lighting and wind sensor provides shade and shelter. A zippered roll-up bug screen on the side and rear doors invites a fresh gentle breeze without those unwanted guests.

The floor is a true honeycomb composite material, cut with a CNC router to guarantee a tight, measured, engineered fit. There is no plywood in the floor or ceiling, eliminating those annoying popping or cracking sounds. The Aqua-Hot 125MD heat exchanger easily handles the demands of this small space, providing both heated water and air in this well-insulated interior. The 15,000-BTU variable speed air conditioner/heat pump is whisper quiet with a stingy power draw, totally capable of running off batteries alone.

The jump seats are ultra leather on a mounted track, snuggled together to take up less space, or spread apart for passengers. Need a dining or work space? Pop in the small Lagun table, rotate the front chairs around and you have it!

The galley is compact and simple with a small sink, a 12-volt 3.1-cubic-foot refrigerator with freezer and the portable single-burner induction cooktop. The door of the refrigerator is a white board, ready for lists and messages. The cabinets are Tiffin quality, with soft-close doors, and the drawers are all wood-framed. A rod extends the entire width of the van above and just behind the driver's seats for hanging anything from wet towels to backpacks.

BED, BATH AND BEYOND

With the push of a button, the full-size bed descends from the rear ceiling. Ample LED lighting in all the right places uses little power and is fully adjustable. The powerful lithium-ion batteries and the inverter live in the easily accessible side wall. The GH1 is totally battery driven, eliminating the need for propane or a generator. Batteries recharge using the solar panels up top, when plugged into shore power and while driving.

For weight reasons, the 24x36-inch wet bath is constructed with double thickness reinforced plastic, not fiberglass. It contains a handheld showerhead and a cassette toilet.



STEVE BLUME

When the bed is stored above, you have access to a 49x79-inch gear garage.

The bathroom features a bifold door and a magnetic shower curtain. If your plan is to use campground facilities, the bath can be turned into a closet using the removable shelves stowed behind the jump seats.

A VAN FOR ALL

This van is for everything. Take it to the beach or the lake, on a hike or even to the restaurant with a two-hour wait. Where does this dirt road go? Let's find out.

Realistically, Tiffin did not design this off-road van for me, an older Class A owner on the rusty side of my active adventures, but I know a ton of folks who will love the GH1.

I asked Jonathan Osborne, the Tiffin Motorhomes National Sales Manager for Class B, if this bad boy had more brothers and sisters coming soon that might be better suited for a less adventurous comfort-loving guy like me. He responded, "Absolutely!"

I can't wait to see what comes next! 🚐

A retired entrepreneur, Steve Blume and his wife, Nancy, spend half the year on the road and the other half at their Brentwood, Tennessee, home. His articles have appeared in newspapers and magazines on multiple topics.

DESTINATION: LONG ISLAND, NEW YORK

LONGING FOR LONG ISLAND

Just east of New York City, you can dive into history, fun, memorials and more — and you're always near the water.

BY KELLIE B. GORMLY



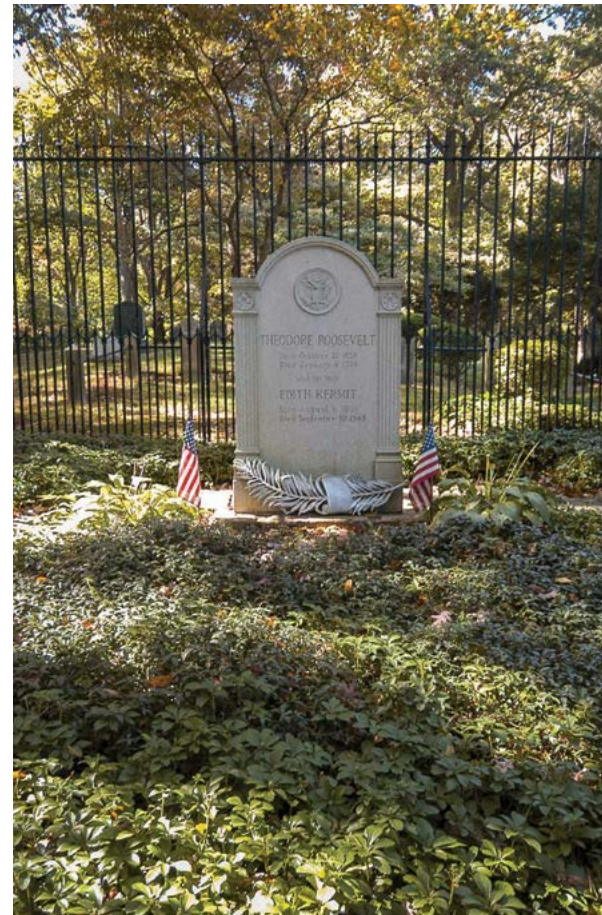
Montauk Lighthouse is one of 25 lighthouses on Long Island.

HAVESEEN / ADOBE STOCK

I first visited Long Island, New York, when a friend moved there about a decade ago. A longtime fan of New York City, I was eager to see what lies beyond the massive skyline of Manhattan when you keep traveling east past the city limits onto the — well, long — and narrow strip of land with numerous small, quaint communities, and lots of stuff to do. Best of all, the coastal setting provides breathtaking views of nature! There is the Atlantic Ocean to the south of Long Island, the Long Island Sound on the north, and other bays and rivers. Water is everywhere, and you are never too far from it.

While New York City is about the worst place to take your compact car, let alone a big RV, Long Island has a spread-out suburban environment, and while traffic can be thick, it's nothing like driving in Manhattan. With such beautiful nature surrounding you, Long Island is a wonderful place to drive your RV and camp for a vacation. After my first visit, I have returned to Long Island several times, and I don't like to let a year go by without visiting the Empire State's majestic Atlantic Coast.

An entire book could be written about this vast geographic area — exactly 118.1 miles from the mouth of the Hudson River to the easternmost tip — but for now, here are a few of my favorites.



Theodore Roosevelt is buried about a mile and a half from Sagamore Hill.

ZACK FRANK / ADOBE STOCK

“It is an incalculable added pleasure to any one’s sum of happiness if he or she grows to know, even slightly and imperfectly, how to read and enjoy the wonder-book of nature.”

— Theodore Roosevelt

ROOSEVELT’S SUMMER WHITE HOUSE

For history buffs, the National Park Service’s **Sagamore Hill National Historic Site** — the home of Theodore Roosevelt, one of America’s most noteworthy presidents — offers a delightful experience. The beautiful house, home of the 26th president from 1885 until his death in 1919, stands on 83 acres that include Roosevelt’s gravesite and nature trails for visitors to explore.

One of Roosevelt’s hallmark traits was his love of nature: “It is an incalculable added pleasure to any one’s sum of happiness if he or she grows to know, even slightly and imperfectly, how to read and enjoy the wonder-book of nature,” the president said.

Sagamore Hill — a blue Victorian-style mansion — was known as the “Summer White House” during Roosevelt’s presidency, so a

summer day is the perfect time to visit. The house was the site of many events, including visits from foreign dignitaries. Guided tours of Sagamore Hill are available year-round, Thursdays through Sundays, and they are the only way to access the house. The larger grounds are open from sunrise to 30 minutes after sundown year-round. All tour tickets must be purchased in advance at recreation.gov. (20 Sagamore Hill Road, Oyster Bay, NY; 516-922-4788; www.nps.gov/sahi/index.htm)

WALT WHITMAN CENTER

If you like literature and poetry, you can pay your respects on Long Island to Walt Whitman, who is widely regarded as America’s greatest poet. Visit the **Walt Whitman Birthplace State Historic Site & Interpretive Center**, located in Huntington Station.

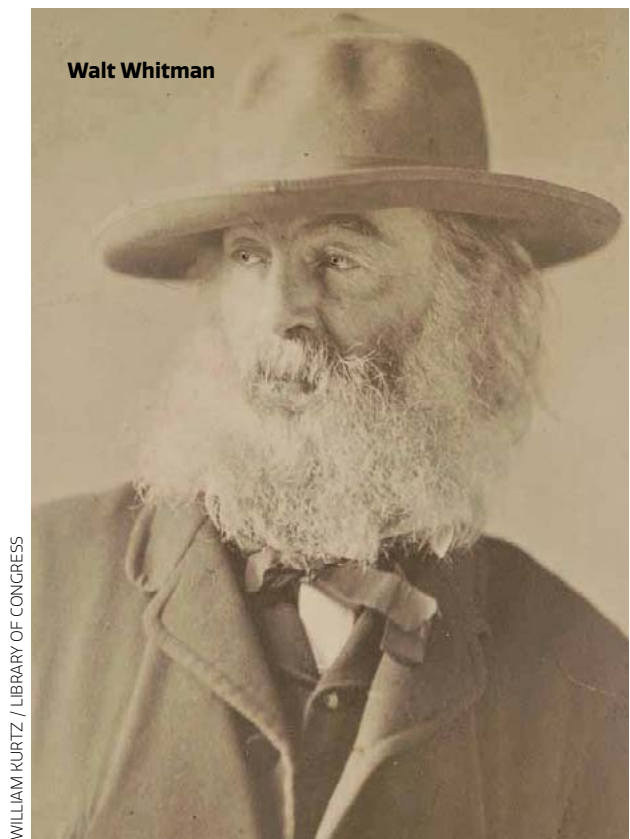


Theodore Roosevelt had a lifelong interest in nature and birds. In a recent survey, 116 bird species were documented at Sagamore Hill.

LITTLEBY / ADOBE STOCK



WALTER J. LUBKEN / LIBRARY OF CONGRESS



WILLIAM KURTZ / LIBRARY OF CONGRESS

At the Cradle of Aviation Museum, you can see 75 air and spacecraft from more than 100 years of aviation history, including this F-14.



JOSH / ADOBE STOCK



PHOTO FROM BAYVILLE ADVENTURE PARK

The entire family will enjoy the various pirate-themed activities at Bayville Adventure Park, such as miniature golf, bumper boats, rock climbing and more.

LONG ISLAND EATERIES

We drew on our own experience and asked some current and former residents and frequent visitors to recommend their favorites. With such a large island, you can find anything you're in the mood to eat.

Italian Favorites: If you have a hankering for Italian food, go to **Maroni Cuisine**, a restaurant with two Long Island locations, in Northport and Southold. They are famous for Grandma Maroni's Meatballs, which come in hot pots with pomodoro sauce, with or without pasta. The family-owned restaurant also offers a lot of seafood on its ever-changing menu. (54195 Main Road, Southold; 631-765-4500; and 18 Woodbine Ave., Northport; 631-757-4500)

Another Italian favorite, **The Original Vincent's Clam Bar**, is imported from New York City's Little Italy, where Italian immigrants started the first Vincent's in 1904. Now, the tradition continues on Long Island, where people come for the artisan pizzas, pastas and seafoods — including the namesake clams, of course.

Chefs prepare the food in an open kitchen where everyone can watch. (179 Old Country Road, Carle Place; 516-742-4577)

American Fare: There's nothing like the good, old-fashioned American diner — and the **Golden Globe Diner** in Huntington is quite charming. You can eat there or get a nice feast to go for your RV. The diner uses locally sourced ingredients and offers a menu with tons of breakfast food (like omelets, waffles, pancakes and French toast) and lunch and dinner options (like sandwiches, burgers, quesadillas and salads). (365 Main St., Huntington; 631-421-1508)

Elegant Dining: If you're in the mood for something fancier, check out **Pier 95 Restaurant & Marina**, which boasts a dining room that overlooks the Hudson Canal and the boat-filled marina. The upscale Mediterranean menu has a touch of Portuguese cuisine and offers a lot of seafood, along with other meat dishes, pastas, soups and salads. (95 Hudson Ave., Freeport; 516-379-9898)



Pier 95 Restaurant

Breakfast Hotspot: The last time I visited Long Island, I met a friend at **Toast Coffeehouse** for a delightful outdoor breakfast on a sunny day in Bay Shore — one of five Toast locations. The food was so good that I am happy to recommend Toast as a worthwhile spot for breakfast and lunch. The cinnamon swirl French toast was to die for! In addition to the main menu, Toast offers a vegan menu, which is an appreciated option for many diners. (9 South Park Avenue, Bay Shore; 631-647-9560; check toastcoffeehouse.com/ for other Long Island locations)

This house, built in 1819, served as the famous poet's writing inspiration as well as his original home. In this beautiful house, visitors will see 19th-century furnishings, more than 130 portraits of Walt Whitman, and artifacts like manuscripts and a schoolmaster's desk.

You can also hear Whitman's voice on tape. His poems are beloved for capturing the national sentiment on events and issues in the 19th century, such as the Civil War, slavery and immigration. Tours are offered Wednesdays through Sundays. (246 Old Walt Whitman Road; 631-427-5240; www.waltwhitman.org/)

AVIATION HISTORY

As fun as RVing is, so is flying. Remember the now defunct Pan Am Airlines? Long Island, with nearby JFK Airport, is a great location to remember this American icon at the **Pan Am Museum Foundation Exhibit**. Located inside the **Cradle of Aviation Museum**, you can explore artifacts from Pan Am's airplanes and people throughout its history. Pan Am was known as the World's Most Experienced Airline.

In addition to this museum-within-a-museum, the huge air and space facility has numerous themed exhibits, including one each

for World War I and World War II; an immersive planetarium where you can see many cool shows; and aircraft to explore. It's open Tuesdays through Sundays, from 10 a.m. to 5 p.m. (Charles Lindbergh Blvd., Garden City; 516-572-4111; www.cradleofaviation.org)



PHOTO FROM BAYVILLE ADVENTURE PARK

You must be 40" tall to experience the **Jungle Treetop Adventure** at Bayville Adventure Park, which is based on the life of anthropologist Dr. Brittany Bay.

PIRATE FUN

For a family-fun amusement park near Long Island Sound, check out the pirate-themed **Bayville Adventure Park**, a family-owned attraction that goes back to 1853. Here, you and the kids can enjoy everything from a fun-house to bumper boats, miniature golf, indoor rock climbing, train rides, a water slide and an arcade. (8 Bayville Ave., Bayville; 516-624-7433; bayvilleadventurepark.com/)

HONOR TWA FLIGHT 800

Americans should pay respects to people killed in tragedies, like war battles and plane crashes. While you are on Long Island, you have the opportunity to do that in a beautiful beach spot just steps from the Atlantic Ocean, near the sky where TWA Flight 800

exploded on July 17, 1996, and plunged into the water below.

The beautiful **TWA Flight 800 International Memorial and Gardens** honors the 230 people who died on the 747. International flags representing each victim's country surround the curving memorial, which is a nice place for quiet, peaceful reflection. You can get to the memorial just east of the Smith Point County Park pavilion. (William Floyd Parkway, Mastic Beach; nps.gov/fis/planyourvisit/flight-800-memorial.htm) 🚗

*Kellie B. Gormly is an award-winning veteran journalist. She writes for publications including **The Washington Post**, **Woman's World** and the **History Channel**. She lives in Pittsburgh and lives to travel — both via road trips and airplanes. Kellie's website is kelliebgormly.com.*



Long Island is full of breathtaking waterscapes, including the south shore (left) and Smith Point at Fire Island (opposite page).

LEON718 / ADOBE STOCK



JONBILIOUS / ADOBE STOCK

LONG ISLAND RV PARKS AND RESORTS

On Long Island, you'll be either right next to or near breathtaking views of the water. You have several campgrounds to choose from in the 118-mile stretch between New York Harbor and the eastern tip of Long Island. This is only a sampling of campgrounds; to see a complete list, visit discoverlongisland.com/where-to-stay/campgrounds-rv-parks/.

Smith Point County Park: For an especially beachy vacation, check out **Smith Point County Park**, a 2,293-acre campground right on the Atlantic Fire Island barrier beach. This campground attracts many surfers and sportsmen and offers activities like scuba diving, fishing and swimming. (1 William Floyd Parkway, Shirley; 631-852-1340)

North Fork Resort at Eastern Long Island Kampground: This privately owned resort isn't just for RVs — you'll share the campground with glamping options like cottages, yurts and safari tents. **North Fork Resort** begins its 2024 season with many renovations and additions, including an upgraded swimming pool and lounge area, a new food court and several new premium RV sites. (690 Queen Street, Greenport; 631-477-0022)

Indian Island County Park: Located at the mouth of the Peconic River is the 275-acre **Indian Island County Park**, which offers beautiful views of the serene Flanders Bay, along with picnic tables, playgrounds, benches, grills and restroom and shower facilities. The "island" is now connected to the mainland by a white-sand causeway. (Cross River Drive, Riverhead; 631-852-3232)

West Hills County Park: For a more inland, wooded camping experience, check out **West Hills County Park**,

which has well-groomed nature trails. Here, you can hike the historic Walt Whitman trail to Jayne's Hill, which is Long Island's tallest point at 400 feet. You can arrange to go horseback riding through nearby Sweet Hills Stables. (Sweet Hollow Road, Huntington; 631-854-4423)

Nickerson Beach Park: Located in the western half of Long Island, closer to New York City, the 121 acres of **Nickerson Beach Park** border the Atlantic. The campground has 74 RV sites with utility hookups, and campers can enjoy swimming, the beach and many family activities. (880 Lido Blvd., Lido Beach; 516-571-7700)

Battle Row Campground: This inland camp has 64 RV sites, most of which have water and electricity. At **Battle Row Campground**, you are surrounded by a traditional camping environment with dense woods, and a quiet, relaxing atmosphere. The campground offers swings, private showers and a recreational field. (1 Claremont Road, Old Bethpage; 516-572-8690)

Wildwood State Park: These 600 acres of undeveloped hardwood forest ends on the high bluff overlooking Long Island Sound. **Wildwood State Park** has 89 trailer spots, 11.5 acres of trails, a two-mile beach, showers, picnic tables and grills. (790 Hulse Landing Road, Wading River; 631-929-4314)

Hither Hills State Park: Within these 1,755 acres, visitors get access to a sandy ocean beach, way out in the eastern part of Long Island. On the eastern boundary of **Hither Hills State Park** are the walking dunes of Napeague Harbor. The 189-site campground has showers, a store and a playground. (164 Old Montauk Highway, Montauk; 631-668-2554)

With proper planning, you can enjoy a scenic tour of the Utah Mighty 5 — Arches, Bryce Canyon, Canyonlands, Capitol Reef and Zion National Parks.

BY STEVE BLUME

A Mighty UTAH Excursion

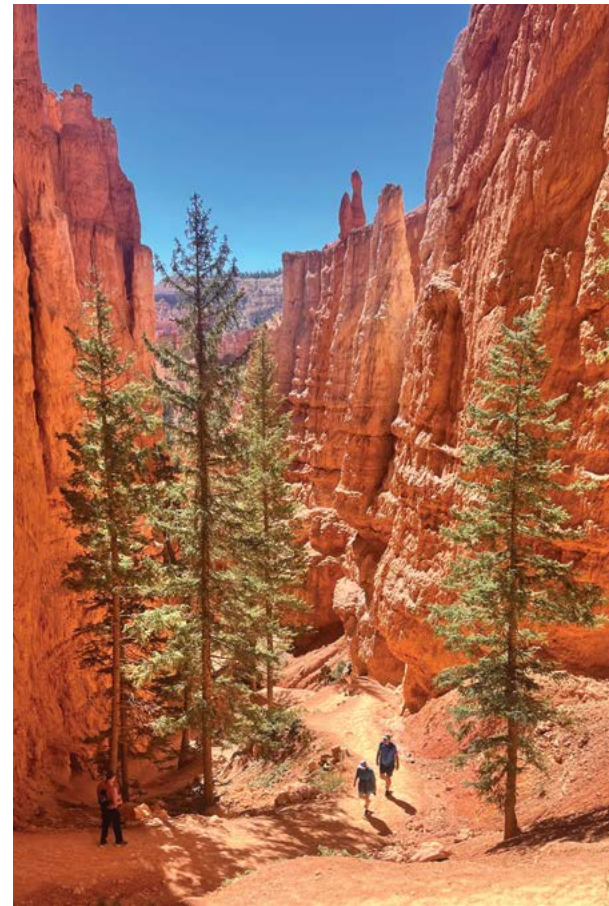
MAISLAM / ADOBE STOCK

In this issue's "RV Know-How" on page 26, I outlined how I use **RV LIFE Trip Wizard** to plan my RV adventures. The example I used was a trip to visit some landmarks in Utah. Here is the actual trip that resulted from that planning!

Utah is home to five amazing national parks — Arches, Bryce Canyon, Canyonlands, Capitol Reef and Zion — collectively known as the Utah Mighty 5, a designation that is well deserved. Each park is unique and awe-inspiring in its own way, and relatively easy to visit in a limited amount of time.

Having just completed this adventure, I wanted to share our route and a few planning tips for the Utah Mighty 5 that will hopefully make it easier for you to do the same. Always visit [recreation.gov](https://www.recreation.gov) well in advance to purchase park passes and review any additional park requirements or restrictions, especially timed entry. A special treat was wandering back into the parks after dark, where millions of twinkling stars painted the unobstructed sky. All of these parks are certified as **International Dark Sky Parks and Sanctuaries** with ranger-led **astronomy programs**, so you are in for a treat!

A game changer for us in all national parks has been the **GuideAlong audio tours** app. The smooth voice (we nicknamed ours "Henry") plays through your car or RV speak-



STEVE BLUME

ers and tells you the best routes to navigate through the park, the history, overlooks coming up, and the best shady picnic spots. In remote areas of a park with no cell or Wi-Fi signal, the GPS chip in your phone enables it to use your exact location to deliver facts, trivia and advice as you drive. Park tours can be purchased individually, but bundles are much less. The Utah Mighty 5 bundle is currently \$31.99. I used GuideAlong in 10 national parks last year and always felt that I was in on a lot of special secrets.

You can reverse the order of parks we visited, but we started our adventure in Moab, which is only 5 miles from Arches National Park and 30 miles from Canyonlands National Park, making it the most popular place to stay. There are many great dry camping options, but we prefer full hookups and chose the **Sun Outdoors Canyonlands Gateway RV Park**. Moab is an off-roaders dream, with trails everywhere. My favorite was the Shafer Trail, which starts just outside Canyonlands and drops to the valley below in a series of hairy switchbacks with no guard rails. Once you are down and your heartbeat is ap-

STEVE BLUME



MIKEOBIZ / ADOBE STOCK

proaching normal, the remote desert drive levels out with incredible vistas, including the famous spot where "Thelma and Louise" drove that convertible off the cliff. You can rent a fully decked out high clearance Jeep or side-by-side in town. Our Jeep from **Canyonlands Jeep Adventures** was around \$350/day.

ARCHES NATIONAL PARK

The arches at **Arches National Park** are spectacular! How were they formed? The GuideAlong audio tour explains all that as you drive, pointing out specific examples. There are more than 2,000 arches in this park, but the most iconic ones are visible from the road or just after a short walk. The park requires a timed-entry ticket if you are entering between 7 a.m. and 4 p.m., April through October. If you don't have one, you can go earlier or later. Plan on spending about four and a half hours driving to the end of the park and back, a total of about 36 miles round trip, allowing about 10 minutes for each of the more popular stops. If you want to add a hike, the Windows Loop Trail, Delicate Arch, Devils Garden and Sand Dune Arch are popular and easy.

CANYONLANDS NATIONAL PARK

Unlike Arches where you are driving through a flat desert landscape and seeing formations going up, **Canyonlands National Park** feels like you are looking down into most of the park, as you drive along a 34-mile scenic round trip overlooking vast carved valleys from 1,000 feet above. There is no timed-entry requirement, so you can come and go at will. Popular easy/moderate hikes are the Grand View Point, Upheaval Dome, Whale Rock and Aztec Butte. Canyonlands is not that large, and you could actually drive through it in an hour or so if you were rushed.

CAPITOL REEF NATIONAL PARK

From Moab, it's only 140 miles to **Capitol Reef National Park**. We chose to stay at the conveniently located **Thousand Lakes RV Park** in Torrey, which is about 6 miles from Capitol Reef.

This park was created through an upward thrusting of the earth's crust then shaped by time and erosion to expose ancient layers of rock. If you drive all the routes in the park suitable for regular vehicles, it's only about 50

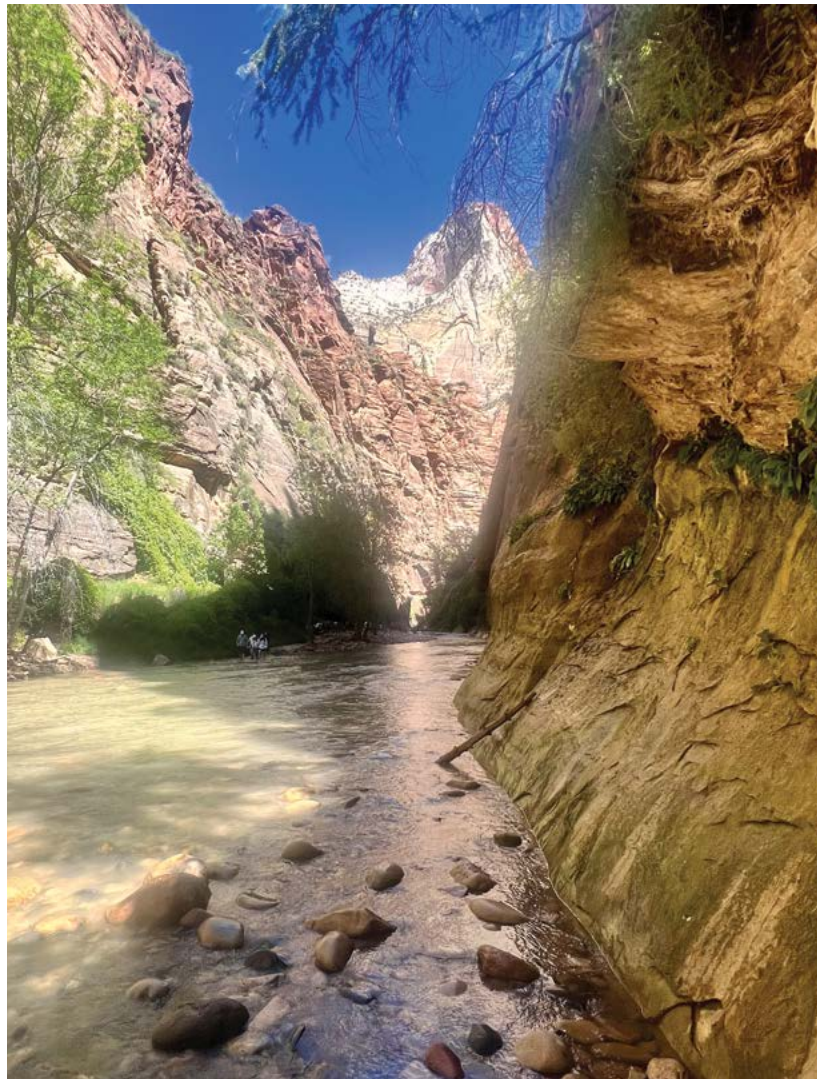
Capitol Reef National Park is located in the Waterpocket Fold, a geologic monocline (a wrinkle on the earth) that is almost 100 miles long.

At Bryce Canyon (top right), you can take several hikes to explore the park, which is home to the largest collection of hoodoos rock formations.

It's a short 30-minute hike to reach the 27-foot-long Mesa Arch (right) in Canyonlands National Park.



STEVE BLUME



STEVE BLUME

The Narrows is a popular spot in Zion National Park. Be prepared to get wet on this hike!

miles and can be done in about three hours with stops at the most popular locations.

Fruita is an abandoned settlement in the park established in 1880 by a group of Mormons with a focus on their orchards, which continue to thrive today. People in the know show up early to score one of the homemade fruit pies sold at the Gifford Homestead. Petroglyphs offer a glimpse of inhabitants over the centuries. The Grand Wash Trail is a flat and easy trail along a mostly dry creek bed through massive formations, but watch the weather for pending flash floods.

While you are in the area, drive down the Highway 12 Scenic Byway toward Escalante to see some breathtaking views. Take the time to drive an unforgettable 18-mile out and back along the Burr Trail Road, which begins in the city of Boulder. This old wagon trail goes 67 miles from Boulder to Bullfrog, but only the first 18 miles are paved. Reset

your odometer at the entrance and at 11.5 miles, there is an unmarked pull off on the north side with a short path just off the road to the Singing Canyon. Look for the tall, shady cottonwood tree guarding the entrance. Inside the canyon, you'll be surrounded by walls that soar up to 80 feet with tiny fragments of blue sky showing between them. Amazing!

BRYCE CANYON NATIONAL PARK

Only 100 miles from our campground in Torrey, we couldn't wait to get on the road and check into the historic **Ruby's Inn and RV Park**, which opened in 1916 and is a great home base for visitors to **Bryce Canyon National Park**. At the park, you'll see a stunning series of natural amphitheaters or bowls, carved into the edge of a high plateau, with those crazy hoodoos or fairy chimney formations. Viewpoints are found all along the park's 18-mile main road, which travels from the park's only entrance in the north along the plateau rim to its highest elevations in the south. There are many easy walks around the rims, but there are also some strenuous ones up and down into these canyons. Queens Garden and Navajo Loop are tough!

Parking in the park can be challenging, but a bike path connects Ruby's campground to the miles of paved trails and a free park shuttle picks you up out front. My GuideAlong audio guide suggested that we take the 18-mile scenic drive first and make the famous amphitheater our grand finale. What a great suggestion!

ZION NATIONAL PARK

Low tunnels with restrictions on the Zion Park Scenic Byway and the eastern entrance eliminate the shortest RV route from Bryce Canyon to **Zion National Park**, so many people choose to stay in campgrounds just outside the eastern entrance at Mt. Carmel Junction. Because Zion is only 58 miles from Ruby's campground, so we decided to make it an out-and-back day trip in our car rather than move. The RV route to Zion takes you north then around the western side so you can enter through the south gate, a route of about 150 miles.

Zion is majestic with those massive sandstone cliffs. In contrast with all that rock is the lush vegetation in clustered areas. Water seeps through walls in the strangest plac-



KELLYVANDELLEN / ADOBE STOCK



STEVE BLUME



JFL PHOTOGRAPHY / ADOBE STOCK

es. From start to finish, Zion Canyon Scenic Drive is only 7 miles long, but it is magnificent. From March through December, no personal vehicles are allowed, but free shuttles run every 15 minutes and it takes about 45 minutes each way with multiple stops. Bikes are allowed but must pull over when shuttles approach. Parking is challenging near the park shuttle area, so consider using the commercial lots outside the park with their connecting shuttles.

If you're super adventurous, there are two bucket-list hikes here. Angels Landing is extremely difficult and dangerous, with five deaths in the last five years. It requires a permit through a lottery system if you want to try it. If you don't mind getting wet, the Narrows requires hiking through the narrowest section of Zion Canyon in the Virgin River, with walls 1,000 feet tall and the river sometimes just 20 to 30 feet wide. Not prepared? Don't worry, gear can be rented in the park. 🚗

You will be treated to stunning views of majestic rock formations at Zion (top), Arches (left) and Bryce Canyon (above) National Parks.

OUR DENALI QUEST

A couple on a six-year, RV adventure traveled to Alaska in hopes of viewing Denali, the highest mountain peak in North America.

ARTICLE AND PHOTOGRAPHS BY SCOTT FOX





Denali National Park has magnificent views of mountains. The water in this valley eventually becomes the Toklet River.



Denali is huge. It stands more than 20,000 feet tall, and most visitors to **Denali National Park and Preserve** in Alaska never see it. Did we see it? Based on the picture on pages 72-73, you know that we did. The big mountain was there, behind the trees and behind our Tiffin RV the whole time. But we were never sure if our plan to see the mountain would succeed. We dedicated 12 days to our quest, hoping to get a cloud-free picture of Denali. We were rewarded on the morning of our last day.

IS SEEING DENALI A CERTAINTY?

Unfortunately, I don't have any tricks that would guarantee that you will see Denali. If you want a higher chance of success, you probably should time your visit at the end of June (we did) and stay for about two weeks (we did that, too). Most visitors to the park fail to see Denali and those who succeed usually only get a partial view of the mountain. A partial view is considered a success!

Anderson Riverside Park was the first place in Alaska where we hoped we might

have a chance to see Denali. We were the only people there. There are some other RV sites in Denali National Park, but we were the only people camping at Anderson that night. Unfortunately, we didn't see Denali because of the clouds and rain. The view was nice, but the mosquitos at Anderson Riverside were terrible.

While in Denali National Park, nearly every visitor will see photos of the big mountain at every shop, restaurant and stop. Some will even buy the T-shirt that says, "I saw the

mountain." However, I would bet that many visitors who buy the T-shirt did not actually see Denali.

So how many visitors see just part of Denali peeking from behind the clouds and call it a success? I couldn't say. However, I think that the total number of visitors who see Denali on a blue-sky day numbers about 5% of the approximately 600,000 annual visitors to the national park.

We had one blue-sky day out of 12 and it disappeared in the afternoon. If you have a

Scott and Tami Fox took a selfie with Denali in the background.

Moose in Denali National Park tend to live in forested areas near water.



The author's first view of Denali (above) was pointed out by the shuttle bus driver!

blue-sky day and are anywhere near Denali, make sure to go to a well-known viewpoint. Blue-sky days are rare, and there's no guarantee that the sky will remain blue for the entire day.

A PARK PARADISE

Denali National Park is a sightseeing paradise, but it is the only national park that I can think of where most visitors don't see the No. 1 attraction. I'm going to guess that every visitor to the Grand Canyon sees a view of the Grand Canyon. Seeing Denali is not easy, and a view of Denali without clouds is extremely hard to get.

On June 23, three days after we started camping in the park, we took the park shuttle bus tour 43 miles into Denali National Park. We were able to see Denali before our bus ride, but it was always in the clouds.

The park is named after the mountain, but it was initially established to protect Dall sheep. I think I saw and even photographed

some Dall sheep, but they were more than a mile away, so they looked like white dots.

As we got deeper and deeper into the park, we took some nice pictures of really pretty mountains, but the big mountain was still in the clouds.

BUS RIDES REQUIRED (MOSTLY)

Private cars are not allowed beyond mile 15 into Denali National Park, except during shoulder seasons when the bus does not operate. In the summer, you must take the bus to go deeper into the park. The only exception is for campers with reservations at remote campgrounds, but once you get to the camp, you are not allowed to drive around the park nor are you allowed to drive back out and then return to the camp. Our camper wouldn't fit in these remote campgrounds, but if you have a smaller RV, perhaps you could drive in, camp in the remote campgrounds and use your bikes to move around the more remote areas of the parks.



During their trip to Alaska, the author also visited Katmai National Park in the northern Alaska peninsula where he photographed these grizzly bear cubs.

You don't have to take the bus. You could walk, but 43 miles is well outside my walking range. You could also ride bikes — I could probably bike 40 miles. You could also combine walking or riding bikes with the bus, but you must have a bus pass to make a combination trip.

Be careful when bicycling because bears are known to love a nice chase before they have a people snack. You will not be able to outrun — or out-bike — a bear so don't even try. When bears see you running away, they take that as an invitation to chase you and teach you that you cannot outrun a bear.

At mile 45, the park road is closed due to a huge landslide that continues to slide down the side of the mountain. We got off at mile 43 and were treated to some more fantastic views of pretty mountains. I took a photo of a river valley, which was carved by a glacier and the water eventually becomes the East Fork of the Toklet River.

The bus ride was tolerable. It had nice seats and typical school bus windows. We had a

great driver who told us stories the entire way. Drivers don't have to say anything, but ours was a talker, which we appreciated.

During our 43-mile-long bus trip, we were convinced that we were not going to see Denali because it was completely covered by the clouds. But we were wrong!

OUR FIRST VIEWS OF DENALI

We did see the big mountain on the bus ride. Good thing the driver pointed it out because I probably would have missed it. I didn't know where to look or even what I was looking for. Without the bus driver, I would have dismissed the view of Denali in the photo on page 76 as just another cloud.

This was our first view of Denali, which was about 60 miles away. This picture proves that we are in the lucky 30% of visitors who get to see the big mountain, according to our bus driver. He congratulated us for taking the afternoon bus ride because visitors on the morning ride didn't see the big mountain.



MARTIN GAPEK / ADOBE STOCK

The Denali Caribou Herd live almost exclusively within Denali National Park and Preserve. In the 1920s, there were more than 20,000 caribou; currently, the herd numbers around 1,760.

The next day, we went out again, as far as we could in a private car and were treated to some more pictures of pretty mountains.

Near the appropriately named Mountain View campground, we saw Denali again. This time we knew what to look for. Again, the mountain was covered in clouds but at least we had two days in a row that we saw it. At this time, we were feeling pretty special.

It's hard to believe that we saw the big mountain from the northeast side on two consecutive days! Good thing because it was our last two days in the park. We decided to drive about 100 miles to the south where there was another viewpoint, right next to a great campground.

DENALI STATE PARK

After six days, we left Denali National Park and headed toward **Denali State Park**, where we planned to stay for five days.

K'esugi Ken Campground is up the hill from a Denali Viewpoint South inside the

park. This offered more chances to see the big mountain, this time from a different perspective. Unfortunately, the weather would not improve because rain was in the forecast.

Craggy mountains — they are called Little Switzerland — were viewed from the viewpoint. They are located southeast of Denali. When you can't see Denali, these mountains really catch your eye. But when you can see Denali, they seem to disappear.

From K'esugi Ken we scheduled an airplane ride toward Denali including landing on a glacier, but we first postponed and then had to cancel the flight because of inclement weather. We were so disappointed! Other than a drive to Trapper Creek one day to pick up mail, we sat with occasional short drives over to the viewpoint to take pictures of clouds. Then we returned to the campground and sat some more and waited.

One cool thing we saw during our drive to Trapper Creek was a wolf that was moving fast (so no chance for a picture). During the



The perfect view of Denali (above) with a beautiful blue-sky backdrop was taken on the author's final day in Denali State Park. The Little Switzerland mountains are to the far left.

A zoomed in view of Denali's peak (left).

Dall sheep can be found in the high mountains of Denali National Park. They elude predators by using rocks and crags.



PHOTOGALLET / ADOBE STOCK

12 days of clouds and rain while we were waiting to see the big mountain, we explored and kept a vigilant lookout for the large animals that Denali National Park and Denali State Park are known for, such as bears and moose.

On day four at K'esugi Ken, we finally got a peek of the top of Denali. Even though we couldn't see most of the mountain, you can tell that it towers above the mountains in the foreground.

FINAL VIEWS OF DENALI

The weather cleared at K'esugi Ken after four days of rain, and we finally saw Denali in good weather with a blue sky! The weather at our campsite was good, and I checked to see if the mountain was visible or if it was covered in clouds. I started driving toward the viewpoint in our car, but before I got out of the campground, I circled back to pick up my wife, Tami. The weather at the mountain, about 100 miles away, was perfect.

On our final day at K'esugi Ken, we were rewarded with a perfect view of Denali. In the picture on page 79, you can see the Little

Switzerland mountains to the left of Denali. Did you notice them right away? I told you that they seem to disappear when you see the big mountain.

The photo at the bottom of page 79 was at maximum zoom and cropped to make the picture bigger to focus on the top of the south peak of Denali. Unless you are in an airplane, to get a picture better than this you would need a lens about the length of my leg. You would also need a sturdy tripod to hold that huge lens. Additionally, you would need a day with less haze in the air. I didn't see any haze, but it's there. For me, I set my camera on a bench at maximum zoom.

The 12 days of mostly rain and cloudy weather — not to mention recovering from head colds, allergies or possibly COVID — was worth it. Seeing the big mountain was an experience we will never forget, and we're proud to be part of a small group that can honestly say that we saw Denali! 🗣️

Scott and Tami Fox document their RV travel adventures on their blog site, [FoxRVTravel](#). Follow them as they explore various places around the country.

ROAM WITH EASE

**NOW AVAILABLE IN
THE UNITED STATES
AND CANADA**



***THE BEAUTY OF THE OPEN ROAD IS THAT IT BEGS US TO EXPLORE IT.
MAKE THE JOURNEY ON TIRES YOU TRUST.***

TIFFIN ALLEGRO CLUB MEMBERS—GET ON THE ROAD TO SAVINGS.

- Consistent Pricing—Pay the same price on new RV tires at all authorized Michelin RV Tire Dealers.
- Convenient Payment Options—Pay with any VISA®, MasterCard® or American Express® credit or debit card.

Special Advantage Program Pricing on Michelin RV tires at home and on the road.

See the full lineup at [MichelinRVTires.com](https://www.MichelinRVTires.com).

Copyright ©2023 Michelin North America, Inc. All Rights Reserved.



GREEN MEANS PEACE OF MIND.

The drinks? Cold. Temperature? Just right. Your pet? On cloud 9. That's life with the EC-AGS+ Wireless RV Auto Generator Start System. Using your smartphone, the system enables automatic, manual or voice-activated start, climate monitoring and key maintenance reminders. Plus, your batteries are charged and topped off before quiet hours. Easily install the EC-AGS+, and you'll never think about your generator again.

Now available at shop.cummins.com
Learn more at cummins.tech/EC-AGS



The EC-AGS+ works with nearly all Green Onan RV generators.
(except Onan QD 3200)



**FOR
A WORLD
THAT'S
ALWAYS ON™**