

zephyr



43



TIFFIN MOTORHOMES
WHEREVER YOU GO, WE GO.



COVER

2013 ZEPHYR WITH RUSTIC CANYON EXTERIOR

LIVING AREA

45 LZ-C FLOOR PLAN/LE RÊVE FABRIC SUITE WITH GLAZED HONEY CABINETS



COCKPIT



FIREPLACE



KITCHEN



BEHOLD. A MOVING MASTERPIECE. MAXIMUM COMFORT. ULTIMATE LUXURY. TOP-OF-THE-LINE EVERYTHING. To experience Tiffin Motorhomes at its absolute best, step inside the 2013 Zephyr. Every square inch of this 45-foot solid-structured coach has been meticulously designed to impress: Handcrafted wood-working throughout. Upscale amenities to rival a five-star hotel. Masterful engineering that commands the road, easily towing up to 15,000 pounds. This year, we've raised the bar even higher, with a sophisticated new interior design and floor plan options that define superior livability. Without question, the 2013 Zephyr is the most impressive Class A motor home in the industry, and like all our coaches, it's backed by the industry's most acclaimed warranty. For those who want the most the RV experience can offer, it doesn't get any better than this.



CLOSET/CHEST OF DRAWERS



MASTER BEDROOM



BATHROOM

EXTERIOR DÉCOR

FULL-BODY PAINT SCHEMES



GOLD CORAL



RUSTIC CANYON



MAROON CORAL



SILVER SAND



ROCKY MOUNTAIN BROWN



SUNLIT SAND

INTERIOR DÉCOR

No one does luxury like Tiffin Motorhomes, and nowhere will you find a better example than the interiors of the 2013 Zephyr. To personalize this refined style, our interior designers have assembled a selection of neutral color schemes, enabling you to tailor living areas to your specific taste. Each option beautifully complements the tones found in the decorative accents and hardwood cabinetry handcrafted in our Red Bay mill shop and will certainly enhance your personal decorative touches.

CABINETS



CHERRY WOOD



NATURAL CHERRY



GLAZED CORDOVAN



GLAZED CHERRY



GLAZED HONEY



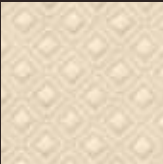
WHITE CHOCOLATE (BATH) *

LE RÊVE FABRIC SUITE

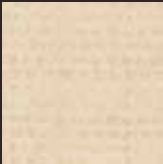
LIVING AREA



SOFA



ACCENT



DINETTE

BEDROOM



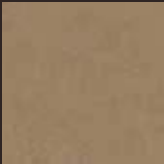
MAIN



ACCENT

ROMANTIC TRAVELS FABRIC SUITE Fabrics by Ralph Lauren®

LIVING AREA



SOFA



ACCENT

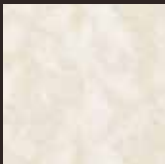


DINETTE

BEDROOM



MAIN



ACCENT

COUNTERTOP & FLOORING



COUNTERTOP



CARPET



TILE

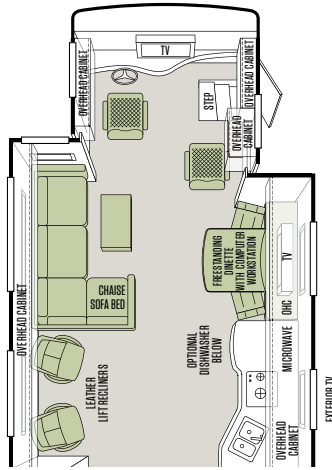
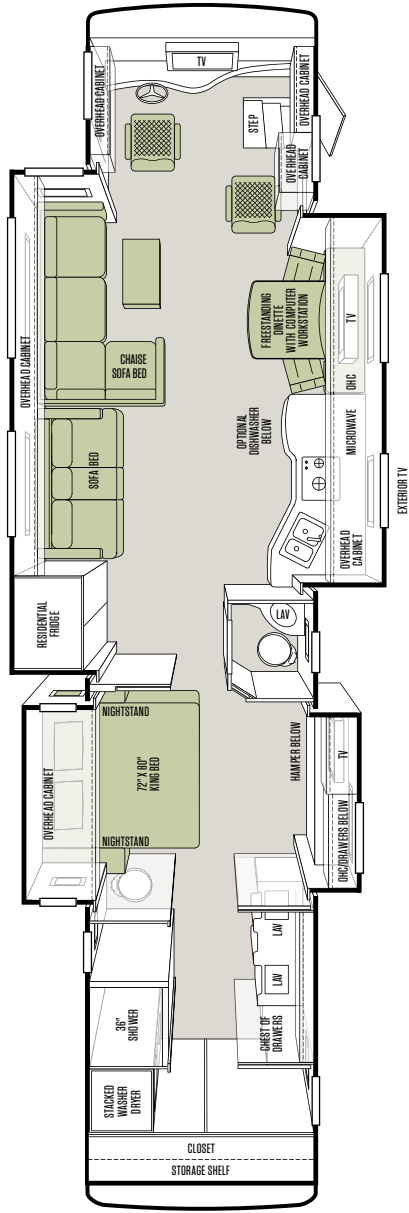
*Not available with Cherry Wood or Natural Cherry finishes.

Zephyr cabinet doors are made of solid wood, and all cabinet finishes are available in combination with any fabric suite. All options may not be available in every model. Because of progressive improvements, specifications, standard & optional equipment are subject to change without notice or obligation. For a complete and up-to-date list of available options and specifications, visit tiffinmotorhomes.com

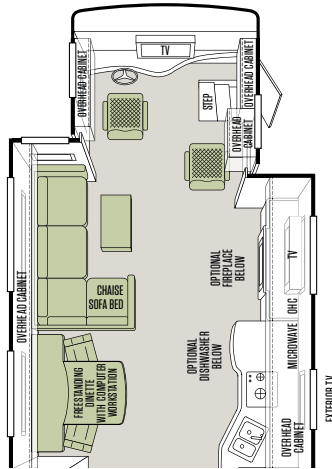
FLOOR PLANS

45 LZ

STANDARD



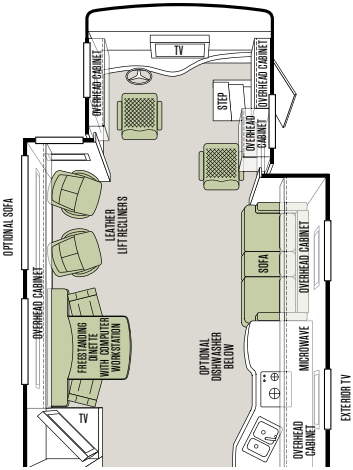
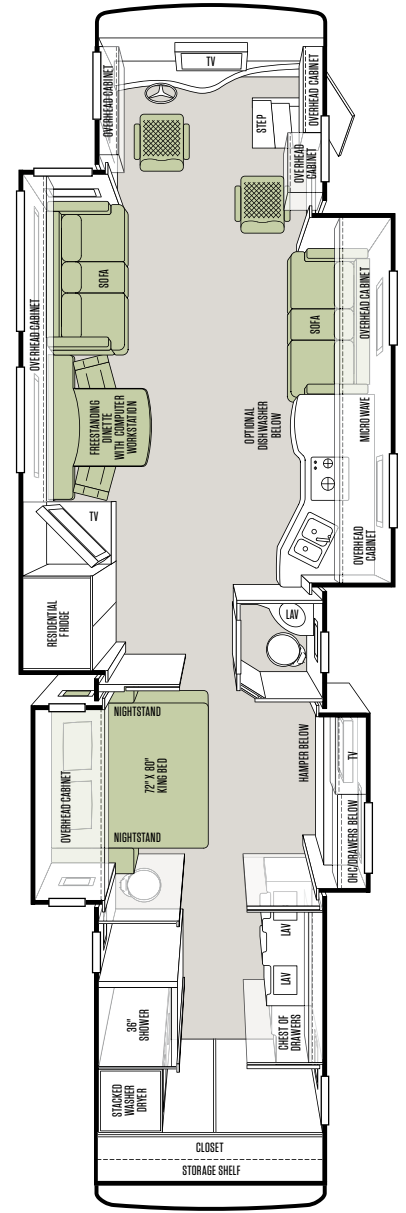
LIVING AREA - OPTION B



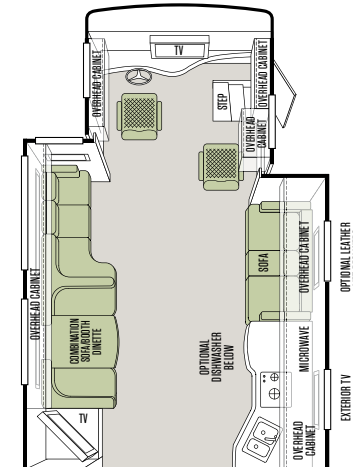
LIVING AREA - OPTION C

45 TZ

STANDARD



LIVING AREA - OPTION B



LIVING AREA - OPTION C



SPECIFICATIONS

GENERAL EXTERIOR

STANDARD ON ALL MODELS:			
<ul style="list-style-type: none">• One-piece Fiberglass Gel-coat Front & Rear Fenders• Swing-up Fiberglass Gel-coat Engine Access Door• One-piece Aluminum Face Swing-out Baggage Doors with Integrated Power Locks• Pass-through Full Basement Storage• Slide-out Storage Tray (Slides Out Both Sides)• 12,500 Onan® Generator with Power Slide• Phone, 120 V & 12 V Outlets Inside Storage Compartment• Auto Generator Start System• Eight House Batteries	<ul style="list-style-type: none">• Three Low Profile Roof Air Conditioners with Heat Pumps• Two Solar Panels• Easy Hook-up Water Compartment with Built-in Hose Exits• Multi-port Manifold System for Hot & Cold Water Lines• Water Pump Switch at Galley, Lavatories & Water Service Compartment• In-motion Satellite System*• One-piece Panoramic Windshield• Black Tank Flush System• Water Filter	<ul style="list-style-type: none">• Power Garden Hose Reel• Outside Shower• Air Horn• Recessed LED Docking Lights• Porch Light• Lighted Exterior Grab Handle• Deadbolt Entrance Door Lock• SeeLevel Tank Monitor at Dump Station• Keyless Entry System (Includes Exterior Compartment Doors)• Basement & Outside Compartment Lights	<ul style="list-style-type: none">• Custom Mud Flap• Electric Power Cord Reel• Exterior TV with Sound Bar• Carefree Paramount Awning (Three Positions)• Front Cap Protective Coating• Insulated Windows, Flush Mounted with Painted Frames• Rearview Heated Mirrors with Integrated Side-view Cameras• Magnum 3000 Watt Sine Wave Inverter

AVAILABLE OPTIONS:	45 LZ	45 TZ
2nd Slide-out Tray	<input type="radio"/>	<input type="radio"/>
2nd Carefree Paramount Awning (Patio Side Only)	<input type="radio"/>	<input type="radio"/>
Basement Freezer (Requires All Electric Coach)	<input type="radio"/>	<input type="radio"/>
Prewired for Winegard Trav'ler Satellite	<input type="radio"/>	<input type="radio"/>

AUTOMOTIVE

STANDARD ON ALL MODELS:		
<ul style="list-style-type: none">• 500 HP @ 1,800 RPM Cummins ISX 11.9-liter Engine with 1,645 Torque @ 1,200 RPM• Independent Front Suspension• Allison 4000 MH Transmission• Heavy Duty Rear Hitch with 15,000 Lb. Towing Capacity	<ul style="list-style-type: none">• Six Aluminum Wheels Plus Two Steel Inner Wheels• Two-stage Engine Brake• VIP Smart Wheel	<ul style="list-style-type: none">• Automatic Air Leveling System• HWH – Hydraulic Leveling System• Fog Lights

CHASSIS

SPARTAN K2 CHASSIS:			
GAWR – Front	16,600 Lb.	Wheel Base	316" (292" from Front Axle to Drive Axle)
GAWR – Rear	20,000 Lb.	Tire Size	315/80R22.5
GVWR	48,600 Lb.	Fuel Tank (Gallons)	150
GCWR	63,600 Lb.	Alternator Amps	270
GVWR Tag Axle	12,000 Lb.	Trailer Hitch Capacity	15,000 Lb.

WEIGHTS & MEASURES

OVERALL:			
Overall Length (Approximate)	44' 11"	Basement Storage (Cubic Feet – Approximate)	165
Overall Height with Roof Air (Maximum)	12' 10"	Fresh Water (Gallons)	90
Interior Height	84"	Black Water (Gallons)	50
Overall Width	101"	Grey Water (Gallons)	70
Interior Width	96"	Minimum Garage Height	13'

STRUCTURAL

STANDARD ON ALL MODELS:		
<ul style="list-style-type: none">• Steel Cockpit Overhead Support Frame• Seamless One-piece Gel-coat Fiberglass Molded Roof Cap• One-piece Molded Gel-coat Fiberglass Front & Rear Caps with Integrated Air Intake	<ul style="list-style-type: none">• Gel-coat Fiberglass Outside Wall Panels• Steel/Aluminum Laminated Sidewalls, Floor & Roof• Laminated Floor Decking	<ul style="list-style-type: none">• Insulated Roof Duct Laminated into Roof Construction• Steel Basement Construction

*High-definition programming is not available on a domed satellite antenna unless you subscribe to DISH Network®.



BEDROOM TV/CHEST OF DRAWERS



LIVING AREA/COCKPIT



SOFA SLEEPER



FREESTANDING DINETTE



SHOWER WITH INLAID TILE

GENERAL INTERIOR

STANDARD ON ALL MODELS:

- Wall Mounted Thermostats
- 12 V Attic Fans with Hardwood Louvers & Wall Mounted Controls
- Cable TV Hook-up & Phone Jacks
- Solid Hardwood Raised Panel Doors
- Recessed Doors & Drawers
- Self-closing Ball Bearing Drawer Slides (Select Areas)
- In-motion Digital Satellite Dish
- Padded Soft Touch Vinyl Ceiling
- Power Solar/Privacy Shades with Wall Mounted Controls (Day & Night)
- Porcelain Tile Flooring Throughout Entire Coach Including Living Room Slide-outs

- Integrated Speakers with Hardwood Louvers
- 3000 Watt Sine Wave Inverter
- LED Bullet Lights in Ceiling
- Ceiling Flush Mounted Multi-lighting System
- Wall Mounted Switches for Lights & Accessories
- Rope Lights Beneath Bedroom Vanity Area & in Window Valances
- 50 Amp Electrical Distribution
- 12 V Breaker Panel
- Ducted Return Air Conditioning System
- Energy Management System

- Air Driven Step Well Cover
- Smoke Alarm
- GFI Outlets at Galley & Lavatories
- Lighted Interior Grab Handle at Entry Door
- Entertainment System with Blu-ray™ Player
- Complete Cable Wiring Interfacing with Surround Sound & Satellite Receiver
- Hydronic Heating System with Continuous Hot Water
- Central Vacuum Cleaner System with VacPan
- SeeLevel Interior Tank Monitor
- All Electric Coach

AVAILABLE OPTIONS:

LPG Tank – Includes 2-burner Recessed Cooktop (Deletes All Electric Coach)

45 LZ

○

45 TZ

○

COCKPIT

STANDARD ON ALL MODELS:

- Contemporary Wrap-around Vinyl-covered Dash
- Backlit Lettering for Dash Switches
- Built-in Driver & Passenger Consoles with Control Switches
- Six-way Power Driver & Passenger Seats including Passenger Power Footrest
- Adjustable Headrests on Driver & Passenger Seats
- Seat Belts Integrated into Driver & Passenger Seats

- Solid Surface Step Well with Recessed Lighting
- TV in Overhead Cockpit Area
- Computer Slide-out Tray in Dash with Lock-out Rails
- Built-in Storage Drawers in Dash
- Smart Wheel with Controls for ICC, Cruise, Windshield Wipers, High Beam/Low Beam, Stereo & Radio
- In-dash Stereo/Navigation System with Smart Wheel Controls

- Adjustable Accelerator & Brake Pedals
- Power Steering
- Driver & Passenger Overhead Fans
- Driver & Passenger Map Lights
- Power Solar/Privacy Windshield Shade
- Driver Side Insulated Power Window
- Driver/Passenger Side Power Solar/Privacy Shades

- Dual 12 V Outlets in Dash Area (Driver)
- Satellite Radio (Requires Subscription)
- Color Rear-view Monitor System with Built-in Cameras & Mirrors
- Side-view Cameras Activated by Turn Signals
- 12 V Battery Power Disconnect
- Fire Extinguisher
- Rearview Mirror with Integrated Compass & Outside Temperature

KITCHEN

STANDARD ON ALL MODELS:

- Solid Surface Countertops and Splash Guards
- Stainless Steel Refrigerator with Ice & Water Dispenser in Door
- Induction Cooktop

- Integrated Solid Surface Galley Sink with Solid Surface Covers
- Expand-an-island
- Ceramic Tile Backsplash with Decorative Inlays

- Stainless Steel Convection Microwave with Exterior Venting
- Power Solar/Privacy Shades & Hardwood Valance
- Built-in Soap Dispenser

AVAILABLE OPTIONS:	45 LZ	45 TZ
Drawer Type Dishwasher	<input type="radio"/>	<input type="radio"/>
Recessed 2-burner Cooktop with Solid Surface Covers (with LPG Option)	<input type="radio"/>	<input type="radio"/>

BATH

STANDARD ON ALL MODELS:

- Two Pyramid Lavatory Sinks with Soap Dispensers
- Dual Medicine Cabinets
- Elongated Ceramic Toilet with Electric Flush
- Towel Holders & Lavatory Accessories Package

- Decorative Pocket Doors
- Stacked Washer/Dryer in Rear Wardrobe
- Laundry Center with Storage & Drawers in Rear Wardrobe
- Skylight in Shower with Sliding Cover

- Hand Held Shower with On/Off Switch
- Solid Surface Shower Walls with Inlaid Tile & Residential Glass Door

BEDROOM

STANDARD ON ALL MODELS:

- TV
- Dual Control Air Comfort King Mattress (72" x 80") with Nightstands
- Under Bed Storage

- Ceiling Fan
- Solar/Privacy Shades
- Pre-wired for Satellite Receiver

- Vanity with Built-in Drawers
- Decorative Hardwood & Wrought Iron Ceiling Ring

AVAILABLE OPTIONS:	45 LZ	45 TZ
Memory Foam King Mattress (72" x 80")	<input type="radio"/>	<input type="radio"/>
Combo Washer/Dryer	<input type="radio"/>	<input type="radio"/>
Security Safe	<input type="radio"/>	<input type="radio"/>

LIVING AREA/DINETTE

STANDARD ON ALL MODELS:

- Freestanding Dinette with Built-in Storage Cabinets
- Decorative Ceiling Panel
- Home Theater Surround Sound System with Blu-ray™ Player

- Decorative Wall & Dinette Lighting Package
- Carbon Monoxide Detector

- TV in Front Living Area (45 LZ)
- TV in Midsection Entertainment Center (45 TZ)

AVAILABLE OPTIONS:	45 LZ (STANDARD)	45 LZ (OPTION B)	45 LZ (OPTION C)	45 TZ (STANDARD)	45 TZ (OPTION B)	45 TZ (OPTION C)
Ultra Leather L-shaped Chaise Sofa/Sleeper on Driver Side	S	S	S	NA	NA	NA
Freestanding Dinette with Computer Workstation on Passenger Side	S	S	NA	NA	NA	NA
Freestanding Dinette with Computer Workstation on Driver Side	NA	NA	S	S	S	NA
Ultra Leather U-shaped Dinette & Sofa/Sleeper Combination on Driver Side	NA	NA	NA	NA	NA	S
Cloth U-shaped Dinette & Sofa/Sleeper Combination on Driver Side	NA	NA	NA	NA	NA	O
Ultra Leather Air-Coil Hide-A-Bed on Driver Side	S	NA	NA	S	NA	NA
Cloth Air-Coil Hide-A-Bed on Driver Side	O	NA	NA	O	NA	NA
Ultra Leather Air-Coil Hide-A-Bed on Passenger Side	NA	NA	NA	NA	S	S
Cloth Air-Coil Hide-A-Bed on Passenger Side	NA	NA	NA	NA	O	O
Ultra Leather Magic Bed on Driver Side	O	NA	NA	NA	O	NA
Cloth Magic Bed on Driver Side	O	NA	NA	NA	O	NA
Ultra Leather Magic Bed on Passenger Side	NA	NA	NA	S	NA	NA
Cloth Magic Bed on Passenger Side	NA	NA	NA	O	NA	NA
2 Leather Lift Recliners on Driver Side	NA	S	NA	NA	S	NA
2 Leather Lift Recliners on Passenger Side	NA	NA	NA	O	NA	O
Fireplace on Passenger Side	NA	NA	O	NA	NA	NA



WHY BUY A TIFFIN MOTORHOME?

No one invests more time and effort into the construction and engineering of motor homes than we do at Tiffin. To ensure superior quality, we design and make many parts ourselves, such as our roof cap, one piece of moisture-resistant molded fiberglass that prevents water intrusion and seamlessly seals a 5½" layer of formed insulation. Outside wall panels are gel-coated fiberglass over high performance thermal insulation. Underfoot, the ceramic tile floor is bonded to high-impact oriented strand board, which is secured atop thermal insulation and a woven moisture barrier material. Underneath it all, every model is built on an innerframe of durable, tubular aluminum. As a new coach comes off the line, we think the result speaks for itself: There isn't a more comfortable, better-built motor home on the road today.

10-YEAR LIMITED FRAME WARRANTY

We warranty the frame of the walls, floors, and roof for 10 years.

5-YEAR LIMITED SIDEWALL BOND WARRANTY

We warranty the sidewall against delamination between the outside fiberglass and the inner frame for 5 years.

GO TO TIFFINMOTORHOMES.COM

Visit us on the web for more information on the 2013 Zephyr and all 2013 Tiffin Motorhomes, along with the latest product and specification updates. Plus, watch videos and see other exclusive web content. You can also join us on Facebook and Twitter.

FOR PARTS & SERVICE CALL 256/356.0261



FACEBOOK.COM/TIFFINMOTORHOMES TWITTER.COM/TIFFINMOTORHOME

YOUR LOCAL TIFFIN DEALER:



Over the years, my family and I have had the pleasure of meeting many of our wonderful Tiffin customers. They're truly among the nicest folks in the world. So, if you're thinking about buying a Tiffin, don't be shy about asking our owners to tell you about their experiences. After all, no one knows our coaches better than the people who drive them. Of course, we'd love the chance to chat with you, too, so give us a call, visit our website, or just stop by the office if you're ever in Red Bay.

Safe travels!



TIFFIN MOTORHOMES

WHEREVER YOU GO, WE GO.

105 2ND STREET NW, RED BAY, ALABAMA 35582

CALL 256/356.8661 FAX 256/356.8219

SOME INTERIOR FURNISHINGS NOT INCLUDED. UNLESS WHERE NOTED, ALL CONTENT ©2013 TIFFIN MOTORHOMES, INC. ALLEGRO®, ALLEGRO BREEZE®, ALLEGRO RED®, PHAETON®, ALLEGRO BUS®, ZEPHYR®, ROUGHING IT SMOOTHLY®, OPEN ROAD®, POWERGLIDE®, AND PUSHER® ARE REGISTERED TRADEMARKS OF TIFFIN MOTORHOMES, INC. ALL RIGHTS RESERVED.