

# Breeze<sup>®</sup>



# INTERIOR DÉCOR

## CABINETS



ENGLISH CHESTNUT



MOCHA



NATURAL ALDER

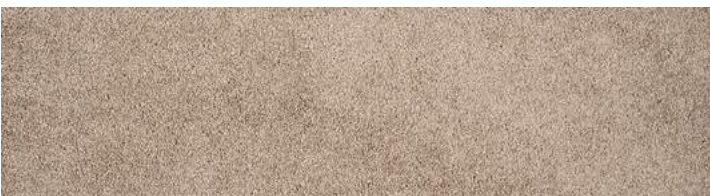
## FLOORING



STANDARD TILE — SEA OAT



OPTIONAL TILE — MALTA



CARPET

## CRÈME FRAICHE

### LIVING AREA



PILLOWS



VALANCE

### KITCHEN



BACKSPLASH

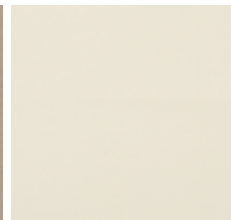


COUNTERTOP

### ULTRALEATHER OPTIONS



BROWN SUGAR



IRISH LACE



MOLASSES

### BEDROOM



Make your experience on the road all your own. Express yourself by choosing the interior appointments such as cabinet finishes, flooring and fabric textures for every part of your motorhome. In the 2019 Breeze, you'll be able to go in style no matter where you go.

**BATIK**

**LIVING AREA**



PILLOWS

VALANCE

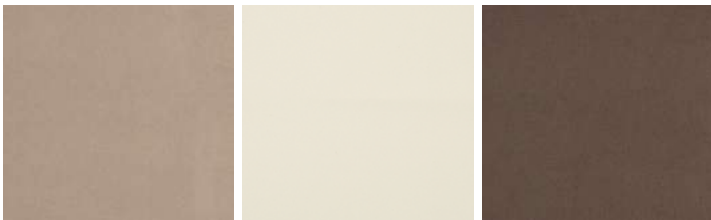
**KITCHEN**



BACKSPLASH

COUNTERTOP

**ULTRALEATHER OPTIONS**



BROWN SUGAR

IRISH LACE

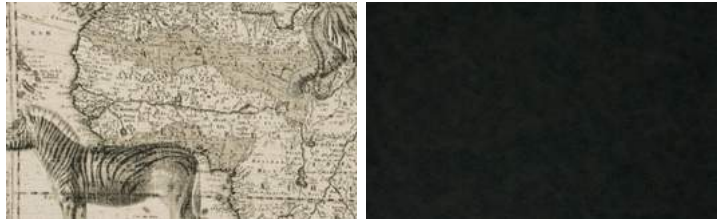
MOLASSES

**BEDROOM**



**LUXE**

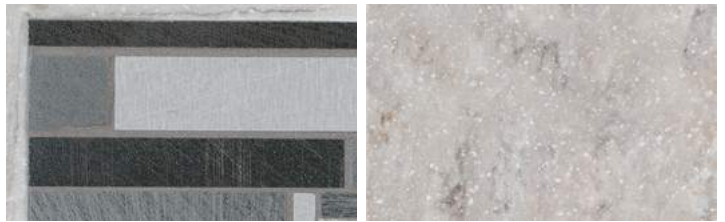
**LIVING AREA**



PILLOWS

VALANCE

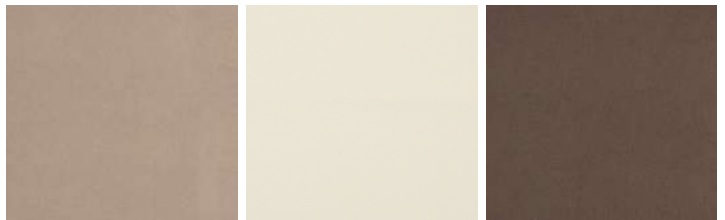
**KITCHEN**



BACKSPLASH

COUNTERTOP

**ULTRALEATHER OPTIONS**



BROWN SUGAR

IRISH LACE

MOLASSES

**BEDROOM**



## PREMIUM PAINT SYSTEM

Our eight-step full-body paint system features premium grade paints sealed with four layers of superclear coat with ultraviolet protection. An additional layer of scratch-resistant plastic coating protects the front of the coach, stairwell, and entry door lock.



MAROON CORAL



SILVER SAND



NASA



SUNLIT SAND



ROCKY MOUNTAIN BROWN



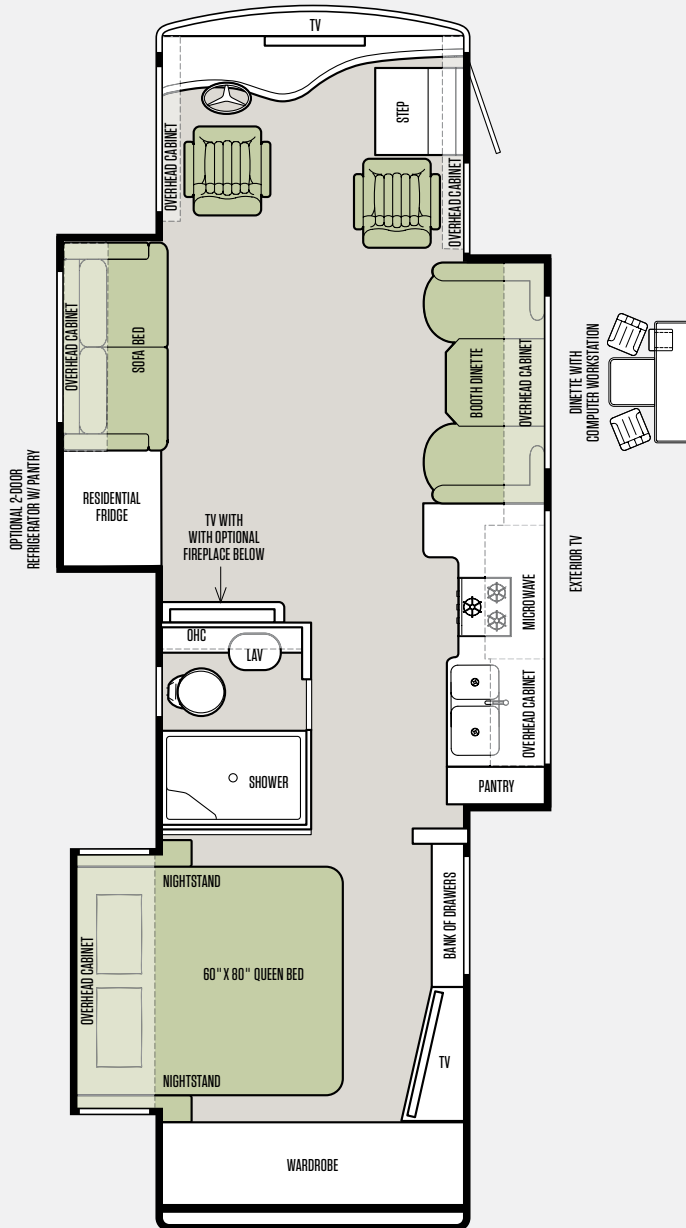
WHITE MAHOGANY

GO TO [TIFFINMOTORHOMES.COM](https://www.tiffinmotorhomes.com)

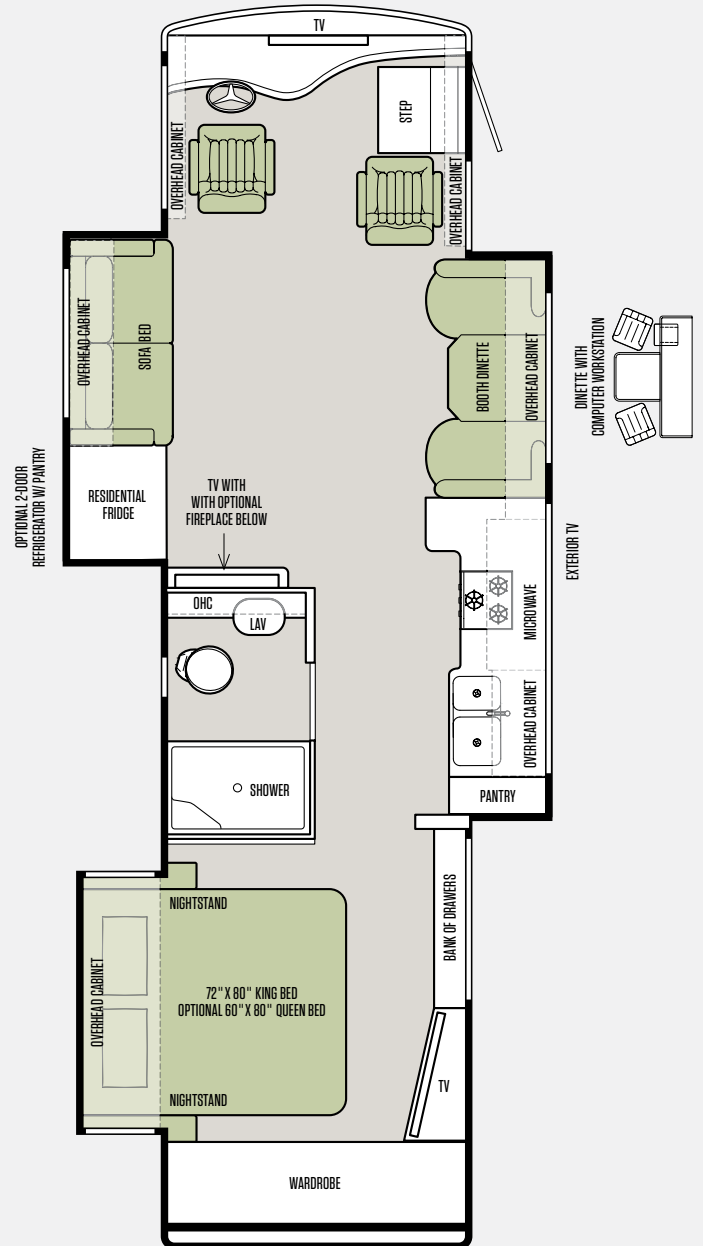
Visit us on the web for more information on the 2019 Breeze and all 2019 Tiffin Motorhomes, along with the latest product and specification updates.

# FLOOR PLANS

31 BR



33 BR



For a complete and up-to-date list of available options and specifications, as well as information on Tiffin's full line of motorhomes, visit [tiffinmotorhomes.com](http://tiffinmotorhomes.com).

# 2019 SPECIFICATIONS

## WEIGHTS AND MEASURES

OVERALL:	31 BR	33 BR
Overall Length (Approximate)*	31' 6"	33' 6"
Overall Height with Roof Air (Maximum)	11' 8"	11' 8"
Interior Height	78"	78"
Overall Width*	95"	95"
Interior Width	91"	91"
Fresh Water (Gallons)	70	70
Black Water (Gallons)	33	33
Grey Water (Gallons)	55	55
LPG Tank (Gallons; can only be filled to 80% capacity)	20	20
Basement Storage (Cubic Feet — Approximate)	79	94
Minimum Garage Height	12'	12'
Hitch Rating**	4,500 lb	4,500 lb

\* The approximated coach width and length does not include side view mirrors and rear ladders.

\*\* Maximum Trailer Weight is dependent on the loading and towing variables which include the GVWR, GAWR, and GCWR, as well as adequate trailer brakes.

## EXTERIOR

STANDARD ON ALL MODELS:		
<ul style="list-style-type: none"> <li>Exterior Rinse Hose/Shower</li> <li>Back-up Camera</li> <li>110 V Exterior Receptacle</li> <li>Inverter for TV and Entertainment Center Only</li> <li>Undercoating</li> <li>Roof Ladder</li> </ul>	<ul style="list-style-type: none"> <li>External Tripod Satellite Hook-up</li> <li>Exterior Storage Compartment Lights</li> <li>Paint Protective Film on Front Cap</li> <li>Seamless, One-piece Fiberglass Composite Slide-out Box Construction</li> <li>Side-view Cameras Activated by Turn Signals</li> </ul>	<ul style="list-style-type: none"> <li>Full-body Paint</li> <li>Level Air System</li> <li>Low Profile Roof AC — Front 13,500 BTU</li> <li>Low Profile Roof AC — Rear 13,500 BTU</li> <li>Exterior TV</li> </ul>

AVAILABLE OPTIONS:	31 BR	33 BR
In-motion Satellite Dish***	O	O
15,000 BTU Low Profile Roof AC with Heat Pump (in Place of Front AC)	O	O
Solar Panel Prep	O	O
Winegard Connect (Subscription Required)	O	O

\*\*\* High-definition programming is not available on a domed satellite antenna unless you subscribe to DISH Network®.

## INTERIOR

STANDARD ON ALL MODELS:		
<ul style="list-style-type: none"> <li>High Gloss Raised Panel Hardwood Cabinet Doors</li> <li>Vinyl Headliner</li> <li>Treated Carpet and Fabrics</li> <li>Ball Bearing Drawer Slides</li> <li>Solar and Privacy Shades in Living Room</li> </ul>	<ul style="list-style-type: none"> <li>LED Lighting</li> <li>Tank Level Monitor System</li> <li>Smoke Detector</li> <li>Extraordinaire™ AC System</li> <li>6-gallon DSI Gas/Electric Water Heater</li> </ul>	<ul style="list-style-type: none"> <li>Step Well Cover</li> <li>USB Ports</li> <li>Two Ducted Furnaces (Front — 35K BTU, Rear — 20K BTU)</li> </ul>

AVAILABLE OPTIONS:	31 BR	33 BR
English Chestnut Solid Cabinet Doors and Drawer Fronts	O	O
Mocha Solid Cabinet Doors and Drawer Fronts	O	O
Natural Alder Solid Cabinet Doors and Drawer Fronts	O	O
Sea Oat (Woodgrain) Composite Floor Tile	S	S
Malta Floor Tile	O	O
2000 Watt Pure Sine Inverter with Automatic Gen Starter	O	O
Central Vacuum Cleaner	O	O

## CHASSIS

POWERGLIDE® REAR ENGINE DIESEL CHASSIS:	31 BR	33 BR
PowerGlide®	182"/24,500 GVWR	202"/24,500 GVWR
Engine	Cummins ISV5.0 275	Cummins ISV5.0 275
Peak HP	275 HP @ 3,200 RPM	275 HP @ 3,200 RPM
Peak Torque (lb - Ft. Max Net)	560 @ 1,600 RPM	560 @ 1,600 RPM
GAWR — Front	8,500 lb	9,500 lb
GAWR — Rear	15,000 lb	15,000 lb
GVWR	24,500 lb	24,500 lb
GCWR	28,000 lb	29,000 lb
Wheel Base	182"	202"
Tire Size	265/70R19.5	265/70R19.5
Fuel Tank (Gallons)	70	70
Alternator Amps	210	210

Because of progressive improvements, specifications, standard and optional equipment are subject to change without notice or obligation.

For a complete and up-to-date list of available options and specifications, visit [tiffinmotorhomes.com](http://tiffinmotorhomes.com).