

CLASS-A

ALLEGRO OPEN ROAD

MODEL YEAR 2023 | PRODUCT UPDATES

Initial MY2023 Model Change Plans, Subject to Change in Full Production

Date Revised: 8/15/22

What's New Summary - Open Road Allegro

WHAT'S NEW

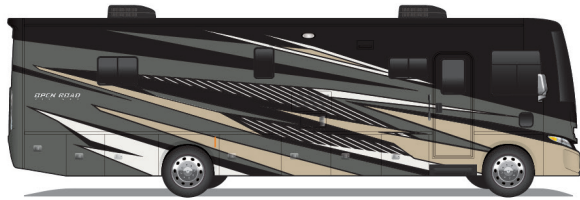
- Two New Fabric Suites (Moondance & Stonewashed)
- Two New Ultraleather Colors (Trail & Taupe Hills)
- Sea Grass Luxury Vinyl Tile
- 50th Anniversary Decal
- Frosted Granite Exterior Paint Color Package in Generation 9 & 10
- Foot Ledge in Shower
- 50th Anniversary Exterior Paint Color Package in Generation 10 Only
- Updated Dinette Boothe Seating for Lift Up Seat Storage Access
- New Wi-Fi Booster
- Cellular Signal Booster Now Available
- Updated Decorative Glass for Driver's Compartment Overhead Cabinets
- Truma AquaGo™ Comfort Instant Water Heater Now Standard; Now Can Be Controlled Through the Spyder System Control Panels
- Residential Refrigerator Now Standard
- New 14.5' Lippert™ On-The-Go™ Ladder
- Updated Dinette Computer Workstation Option
- 2,000-Watt Inverter Now Standard
- Solid Surface Upgrade (Dinette and Mantle) Now Standard

NO LONGER AVAILABLE

- City Shadow III, Portico Linen II, & Sandbar III Fabric Suites
- Belgian and Cocoon Ultraleather Colors
- Sand Castle Luxury Vinyl Tile
- 22,000 pound GVWR Chassis
- 6-gallon DSI Gas/Electric Water Heater
- 10-gallon DSI Gas/Electric Water Heater
- Gas/Electric Refrigerator
- L-Shapes Sofa Furniture Options
- 1,200-Watt Inverter
- Molded-in Shower Seats

Premium Paint System Cont'd

Our eight-step, full-body paint system features premium grade paints sealed with three layers of clear coat with ultraviolet protection. An additional layer of high-performance film protects the front of the coach and select areas.



50TH ANNIVERSARY

NEW

Generation 9 Paint Schemes



G9 BARCELONA



G9 SUNLIT SAND



G9 NASA

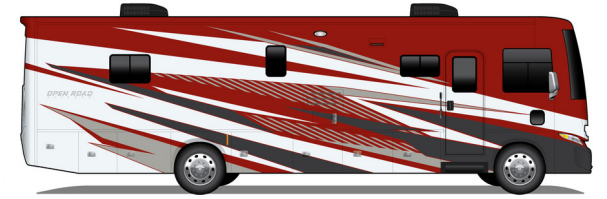


G9 WHITE MAHOGANY



G9 FROSTED GRANITE

Generation 10 Paint Schemes



G10 BARCELONA



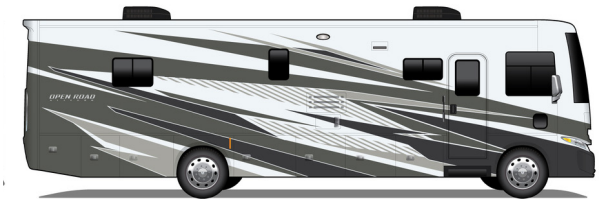
G10 SUNLIT SAND



G10 NASA



G10 WHITE MAHOGANY



G10 FROSTED GRANITE

NEW

NEW

Images shown are representations of paint layouts and colors only and do not reflect all exterior features or options.

Floor Plans



The design of every Open Road floor plan must meet four essential criteria: Maximum space, Optimal organization, Relaxation plus, and Elegant atmosphere. Tiffin's MORE Plans offer your family the most comfortable layout for life on the road.

If optional furniture combinations are selected, window locations may vary from diagram shown.

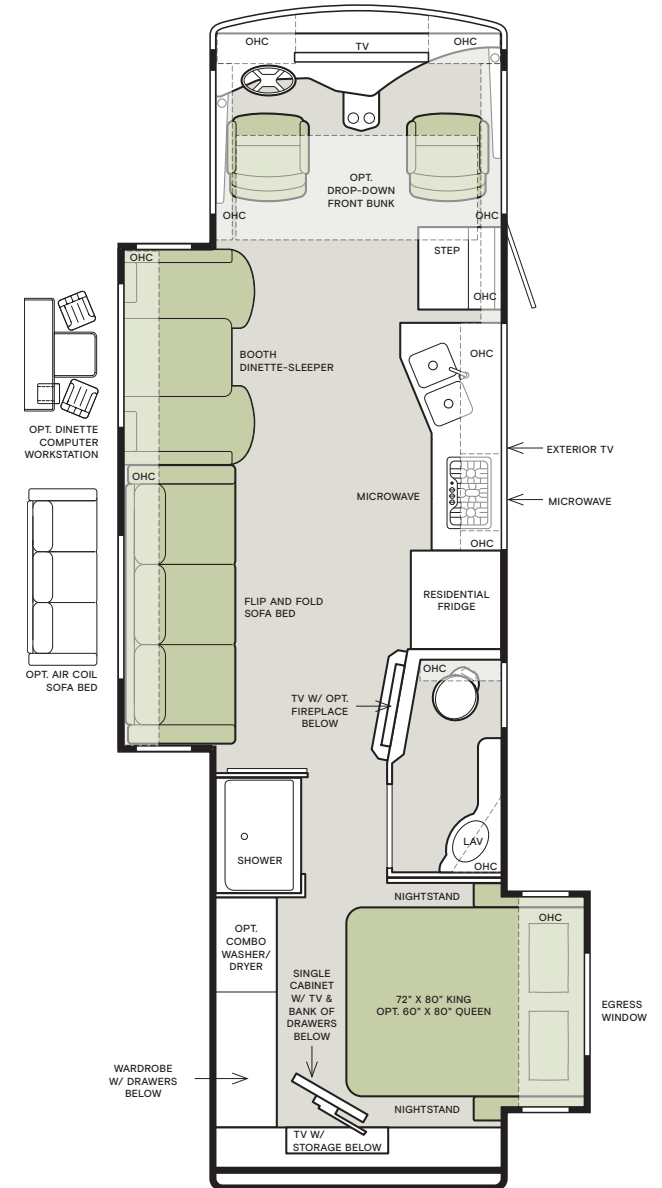
All options may not be available in every model. Because of progressive improvements and specifications, standard and optional equipment are subject to change without notice or obligation.

For a complete and up-to-date list of available options and specifications, visit tiffinmotorhomes.com.

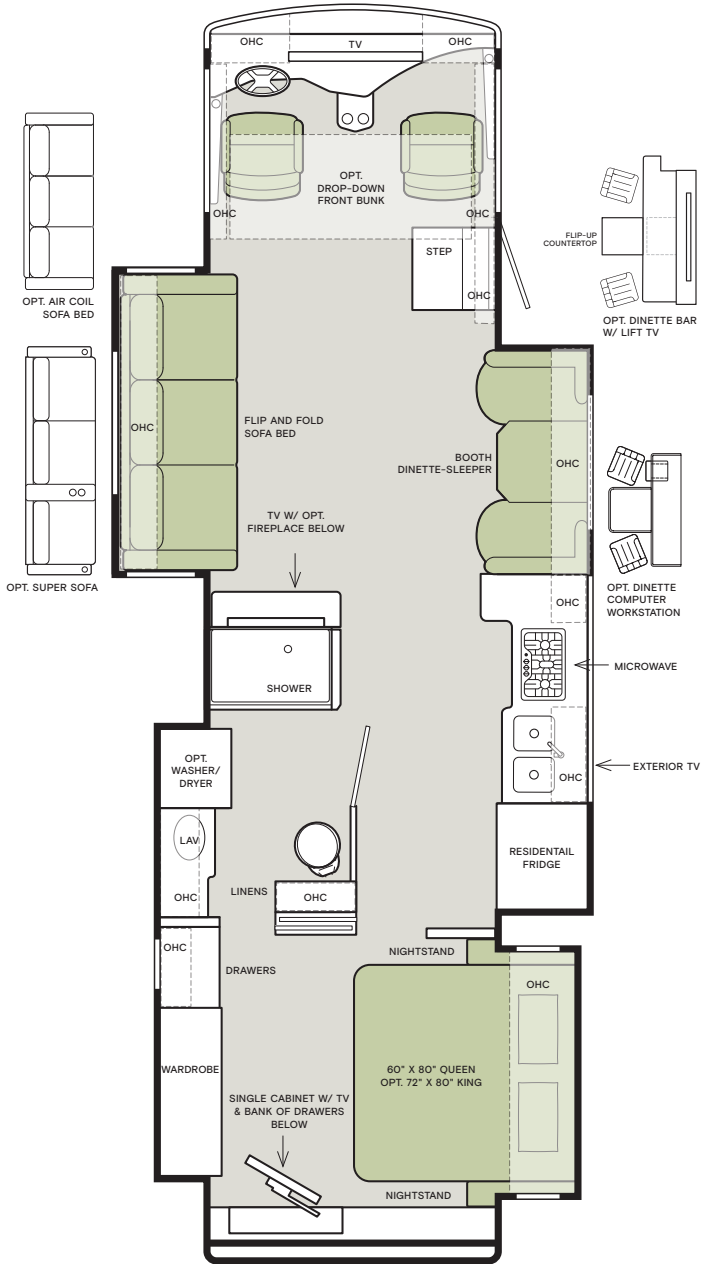
32 FA



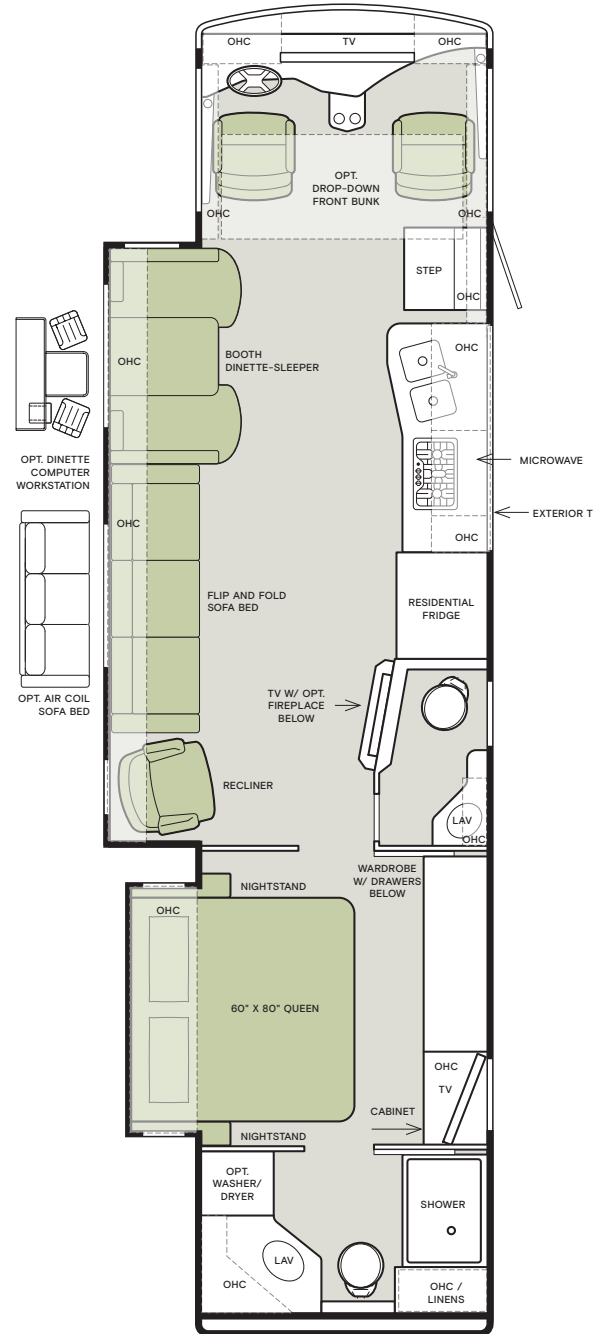
32 SA



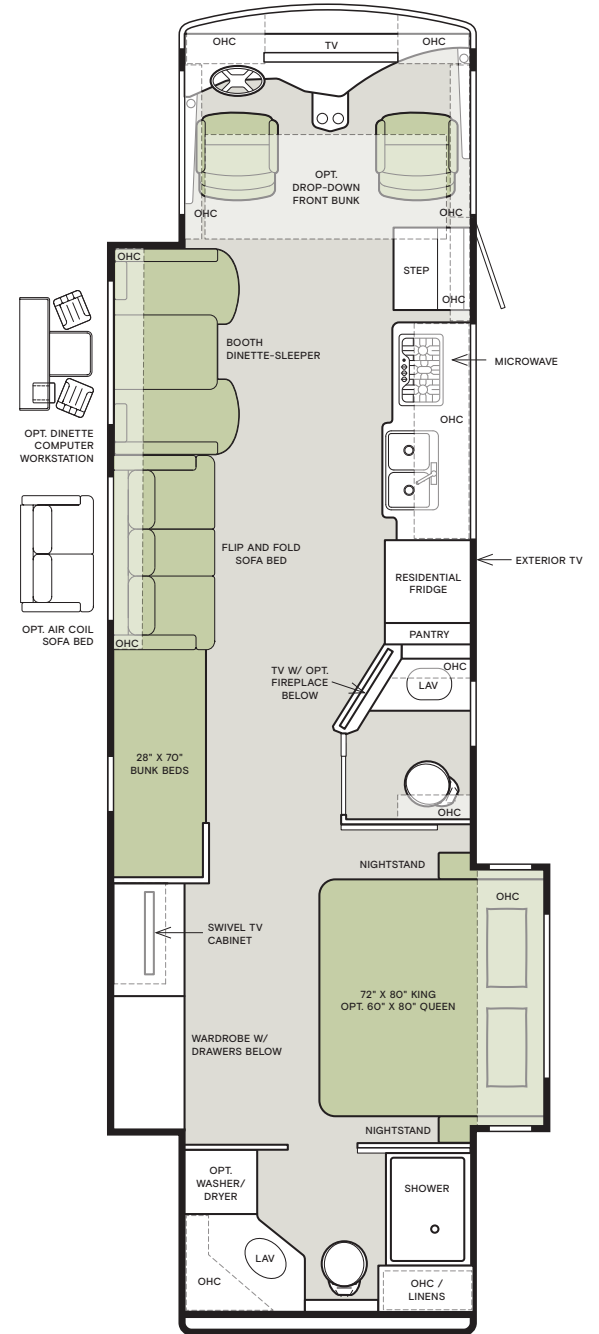
34 PA



36 LA



36 UA



Interior Décor

Make your experience on the road all your own. Express yourself by choosing the interior appointments such as cabinet finishes, flooring, and décor ensembles for every part of your motorhome. In the 2023 Open Road, you'll be able to travel in style no matter where you go.

NO LONGER AVAILABLE

- City Shadow III
- Portico Linen II
- Sandbar III

CABINETS



AMBER GLAZED



SHADOW



NATURAL ALDER

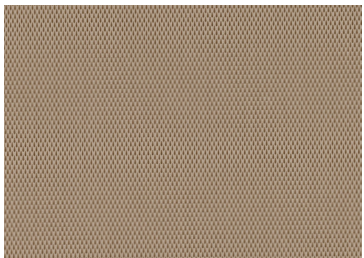
FLOORING



SEAGRASS Matte Finish Tile

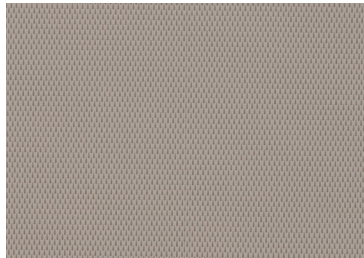
NEW

ULTRALEATHER



TRAIL (S)

NEW

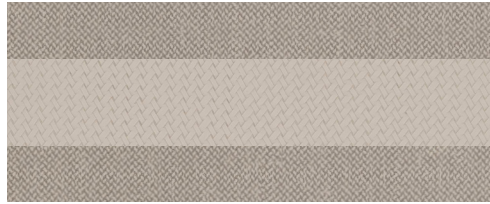


TAUPE HILL (O)

NEW

MOONDANCE

NEW



WINDOW TREATMENT



BACKSPLASH



COUNTERTOP



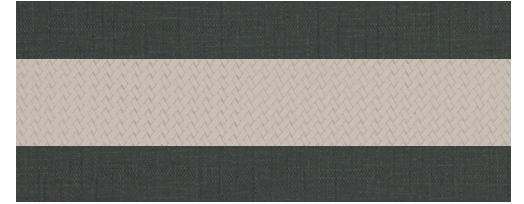
LIVING ROOM



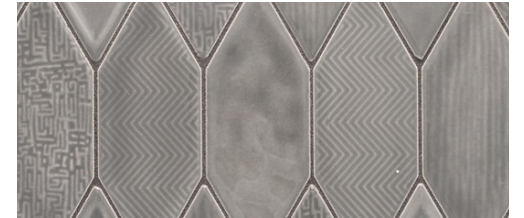
MASTER SUITE

STONEWASHED

NEW



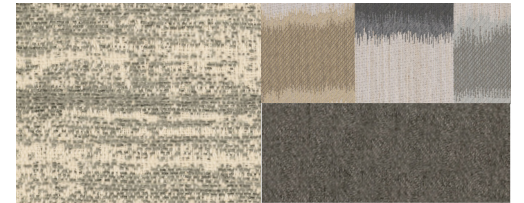
WINDOW TREATMENT



BACKSPLASH



COUNTERTOP



LIVING ROOM



MASTER SUITE

Specifications, Features, and Options

KEY : S : Standard Feature | O : Optional Feature; Additional costs may apply | D : Dependent Feature; Feature is bundled with another optional feature | — : Not Available

WEIGHTS AND MEASURES	32 FA	32 SA	34 PA	36 LA	36 UA
DIMENSIONS					
Overall Length (approximately) ¹	34' 3"	34' 3"	36' 1"	37' 6"	38"
Overall Width ¹	101"	101"	101"	101"	101"
Overall Height	12' 10"	12' 10"	12' 10"	12' 10"	12' 10"
Minimum Garage Height	14'	14'	14'	14'	14'
Interior Height	84"	84"	84"	84"	84"
Interior Width	96"	96"	96"	96"	96"
Basement Storage (cubic feet, approx.)	140	140	203	203	203
Wheel Base	228"	228"	252"	252"	252"
WEIGHT LIMITS					
GAWR-Front (pounds)	9,000	9,000	9,000	9,000	9,000
GAWR-Rear (pounds)	15,500	15,500	17,500	17,500	17,500
GVWR (pounds)	24,000	24,000	26,000	26,000	26,000
Hitch Rating (pounds)	5,000	5,000	5,000	5,000	5,000
Maximum Trailer Weight (pounds) ²	5,000	5,000	4,000	5,000	4,000
GCWR (pounds)	30,000	30,000	30,000	30,000	30,000
CAPACITIES					
Fuel Tank (gallons)	80	80	80	80	80
Fresh Water (gallons)	70	70	70	70	70
Grey Water (gallons)	66	66	66	66	66
Black Water (gallons)	50	50	50	50	50
LPG Tank (gallons) ³	24	24	24	24	24

¹ The approximated coach width and length does not include side-view mirrors and rear ladders.

² Maximum Trailer Weight is dependent on the loading and towing variables which include the GVWR, GAWR, and GCWR, as well as adequate trailer brakes.

³ LPG tank can only be filled to 80% capacity.

CHASSIS AND DRIVETRAIN

- Ford® F-53 Super Duty® Class A Motorhome Chassis
- Aluminum Wheels
- Front and Rear 235/80 R22.5 Tires
- Ford® V8 7.3L 350 HP Gas Engine with 468 lb-ft Torque ¹
- (1) 12-Volt Flooded Lead-Acid Chassis Batteries
- 210-Amp Alternator
- TorqShift® 6-speed Automatic Overdrive with Tow/Haul Mode
- Hydraulic Leveling Jacks
- Front Radiator
- Front and Rear Drum Brakes
- Cruise Control
- Automatic Traction Control

CHASSIS SPECIFICATIONS		32 FA	32 SA	34 PA	36 LA	36 UA
Suspension	Front and Rear Tapered Multi-leaf Suspension	S	S	S	S	S
	LiquidSprings®	—	—	O	O	O

¹ Peak horsepower achieved at 3,900 RPM. Peak torque achieved at 3,900 RPM.

ELECTRICAL

- Liquid Propane (LP) Coach ¹
- Spyder Controls Multiplex System Featuring App Compatibility
- Generator Slide Tray
- 2,000-Watt Pure Sine Wave Inverter with Auto-Gen Start and Interior Remote Control ²
- (4) 6-Volt Flooded Lead-Acid House Batteries
- Battery Slide-out Tray
- Extraordinaire™ Air Conditioning System
- 50-Amp Shore Power
- Prep for Satellite
- Auxiliary Solar Port
- BluRay® Player
- Satellite Receiver
- Park Cable and Ground Satellite Hook-up
- HD Over-the-air Antenna ³
- 12-Volt Breaker Panel
- 12-Volt Disconnect Switch
- Rotary Disconnect Switches for House Batteries, Chassis Batteries, and Inverter
- Ground Fault Circuit Interrupter (GFCI) Outlets at Galley, Lavatories, and Sewer Bay
- 110-Volt Exterior Receptacle
- Surge Guard® Transfer Switch
- USB Receptacles Throughout Coach

ELECTRICAL OPTIONS

		32 FA	32 SA	34 PA	36 LA	36 UA
Generator	5.5-Kilowatt Onan® Quiet Gas Generator	S	S	S	—	—
	7.0-Kilowatt Onan® Quiet Gas Generator	O	O	O	S	S
Air Conditioning	(2) 13,500-BTU Low Profile Air Conditioners	S	S	S	S	S
	(1) 13,500-BTU Low Profile Air Conditioner and (1) 15,000-BTU Low Profile Air Conditioner with Heat Pump ⁴	O	O	O	O	O
Heat Sources	(1) 35,000-BTU and (1) 30,000-BTU Ducted Furnaces	S	—	—	—	—
	(1) 35,000-BTU Ducted Furnace	—	S	—	—	—
	(1) 35,000-BTU and (1) 20,000-BTU Ducted Furnaces	—	—	S	—	—
	(1) 30,000-BTU and (1) 20,000-BTU Ducted Furnaces	—	—	—	S	S
In-motion Satellite Dish ⁵	O	O	O	O	O	
Prewiring for Winegard® Trav'ler™ Satellite ⁶	O	O	O	O	O	
Solar Panels ⁵	Prep for Solar Panels ⁷	O	O	O	O	O
	(1) Solar Panel	O	O	O	O	O
	(2) Solar Panels	O	O	O	O	O
Cellular Signal Booster NEW	O	O	O	O	O	
Wi-Fi Booster UPDATED	O	O	O	O	O	

¹ Propane is used to power the ducted furnaces, the water heater, and liquid propane cooktops.

² Automatic generator start capabilities controlled through Spyder Controls Multiplex System. 1,200-Watt inverter no longer available.

³ Requires subscription.

⁴ 15,000-BTU air conditioner replaces front 13,500-BTU air conditioner. Requires 7.0-Kilowatt Onan® Quiet Gas Generator.

⁵ In-motion Satellite Dish and Prewiring for Winegard® Trav'ler™ Satellite cannot be optioned together on 32 FA, 32 SA, or 34 PA. High-definition programming is not available on a domed satellite antenna unless you subscribe to DISH Network®.

⁶ In-motion Satellite Dish and Prewiring for Winegard® Trav'ler™ Satellite cannot be optioned together on 32 FA, 32 SA, or 34 PA.

⁷ Includes docking ports for aftermarket solar panels.

PLUMBING

- Water Heater Bypass System
- Truma AquaGo™ Comfort Instant Water Heater ¹
- Aqua View Showermiser™
- Water Filter
- Water Pump Switch Access from Spyder System and Sewer Bay Board
- Low-point Water Drain Lines
- Black Holding Tank Flush System
- Gravity Water Fill
- Heated Water and Holding Tank Compartment
- Tank Level Monitor System
- Centralized Exterior Sewer Bay with Gravity Black and Grey Evacuation Ports
- Exterior Rinse Hose with Shower Head
- Sewer Bay Hand Sanitizer and Paper Towel Holders

¹ Now controllable through the Truma control panel and the Spyder System control panels.

Specifications, Features, and Options (Cont'd)

KEY : S : Standard Feature | O : Optional Feature; Additional costs may apply | D : Dependent Feature; Feature is bundled with another optional feature | - : Not Available

EXTERIOR

- Full-body Paint with (3) Layers of Clear Coat
- Seamless One-piece Gel-coat Fiberglass Molded Roof Cap
- One-piece Molded Gel-coat Fiberglass Front and Rear Caps
- Rust Protective Undercoating
- High Performance Protective Film on Front Cap and Select Areas
- (1) Girard® Side-mounted Powered Patio Awning with Integrated LED Lighting
- Girard® Slide-out Toppers
- Steel Basement Construction
- Side-Swinging Exterior Storage Doors with Gas Shocks
- Lockable Chrome Handles on Compartment Doors
- Motion-sensor Lights in Cargo Bay
- 120-Volt and 12-Volt Outlets Inside Cargo Bays
- Framed, Single-Pane Windows
- Daytime Running Lights
- Docking Lights
- Exterior Patio Light
- Fog Lights
- Chrome Power Heated Side-View Mirrors with Integrated Cameras
- Exterior TV with Soundbar
- Fast Charge USB ports within Exterior TV Compartment
- Manual Exterior TV Compartment Door
- Deadbolt Front Entrance Lock
- Entry Door Grab Handle
- Automatic Double Entry Step
- Mud Flaps
- Concealed Air Horn
- Limited Edition 50th Anniversary Decal **NEW**

EXTERIOR OPTIONS	32 FA	32 SA	34 PA	36 LA	36 UA
14.5' Lippert™ On-The-Go Ladder ¹	NEW	O	O	O	O

¹ All units will ship with a Lippert™ On-The-Go™ Prepped Receiver installed.

INTERIOR

- Handcrafted Cabinet Fascias and Doors with Concealed Hinges
- (2) Flat-panel Televisions¹
- Solid Surface Galley Countertop
- Treated Carpet in Slide-out Floors
- Handcrafted Slide-out Fascia
- Soft Touch Vinyl Ceiling
- LED Lighting
- Carbon Monoxide Detector
- LPG Leak Detector
- Smoke Detector
- Fire Extinguisher
- Solar and Privacy Shades
- Soft-closing Drawer Slides
- Powered Roof Vents
- Interior Grab Handle at Entry Door

DECOR OPTIONS	32 FA	32 SA	34 PA	36 LA	36 UA
Treated Fabric Suites ²	Moondance NEW	O	O	O	O
	Stonewashed NEW	O	O	O	O
Ultraleathers ³	Taupe Hill NEW	O	O	O	O
	Trail NEW	O	O	O	O
Handcrafted Cabinetry	Amber Glazed	O	O	O	O
	Natural Alder	O	O	O	O
	Shadow	O	O	O	O
Floor Tile ⁴	Sea Grass Luxury Vinyl Tile NEW	S	S	S	S
Washer & Dryer	Prep for Washer and Dryer	-	S	S	S
	Stacked Washer and Dryer	-	O	-	-
	Combo Washer-Dryer	-	-	O	O
Central Vacuum System	O	O	O	O	O

¹ Located in living area and bedroom.

² City Shadow III, Portico Linen II, and Sandbar III are no longer available.

³ Belgian and Cocoon are no longer available.

⁴ Sand Castle is no longer available.

DRIVER'S COMPARTMENT

- Ultraleather Power Driver and Passenger Seats
- Adjustable Seatbelt Brackets
- Tilt and Telescoping Steering Wheel with Integrated Controls
- Digital Dash Cluster
- Backlit Dash Switches
- Storage Drawer in Dash
- Dual Dash Fans
- 12-Volt Dash Receptacle
- USB Dash Receptacles
- Contemporary Dash
- Cupholders on Driver and Passenger Side
- Built-in Driver and Passenger Consoles with Rocker Switches
- Driver and Passenger Map Lights
- One-piece Panoramic Windshield
- Single-motor Intermittent Windshield Wipers
- Automatic LED Headlights
- Side-view Cameras¹
- Color Back-up Camera Monitor
- Stereo with AM & FM Radio, CD Player, and Satellite Radio²
- Ceiling Mounted Speakers
- Auxiliary Start Switch
- Driver's Compartment Overhead Cabinets with Decorative Glass in Doors **NEW**
- Manual Opening Driver Side Window
- Solid, Non-opening Passenger Side Window
- Powered Solar and Privacy Windshield Shade
- Carpeted Step Well
- Storage Compartment Within Entry Steps

DRIVER'S COMPARTMENT OPTIONS	32 FA	32 SA	34 PA	36 LA	36 UA
Passenger Seat Footrest	O	O	O	O	O
In-dash Navigation System	O	O	O	O	O
CB Antenna	O	O	O	O	O
Front Overhead Drop-Down Bunk ³	O	O	O	O	O
Front Overhead TV	O	O	O	O	O

¹ Integrated within side-view mirrors and activated by turn signals.

² Subscription required for satellite radio.

³ Drop-down bunk sleeps one comfortably and will decrease overhead storage capacity. Maximum weight limit of drop-down bunk is 250 pounds.

DINETTE AND LIVING AREA

	32 FA	32 SA	34 PA	36 LA	36 UA
Driver Side Dinette	Dinette Bar with Lift TV	S	-	-	-
	Dinette Computer Workstation with Lift TV ¹ UPDATED	O	-	-	-
	Ultraleather Booth Dinette-Sleeper ² UPDATED	-	S	-	S
	Dinette Computer Workstation ¹ UPDATED	-	O	-	O
	Overhead Dinette Cabinets	-	S	-	S
Driver Side Furniture	Bunk Beds ³	S	-	-	S
	Ultraleather Flip and Fold Sofa Bed ³	-	S	S	-
	Ultraleather Air Coil Sofa Bed ³	-	O	O	-
	Ultraleather Super Sofa ³	-	-	O	-
	Ultraleather Flip and Fold Sofa Bed and Ultraleather Recliner ³	-	-	-	S
	Ultraleather Air Coil Sofa and Ultraleather Recliner ³	-	-	-	O
Passenger Side Dinette	Mounted Flat-panel TV ⁴	-	-	D	-
	Fireplace	-	-	O	-
	Ultraleather Booth Dinette-Sleeper ² UPDATED	-	-	S	-
	Dinette Computer Workstation ¹ UPDATED	-	-	O	-
	Dinette Bar with Lift TV ⁵	-	-	O	-
Passenger Side Furniture	Overhead Dinette Cabinets ⁴	-	-	D	-
	Ultraleather Flip and Fold Sofa Bed ³	S	-	-	-
	Mounted Flat-panel TV	-	S	-	S
Fireplace	-	O	-	O	

¹ Printer bump-out no longer available.

² Piece of furniture sleeps one comfortably. Now with lift-up seat storage access. Includes forward-facing seatbelts.

³ Piece of furniture sleeps two comfortably.

⁴ Not available when lift TV is optioned.

⁵ Replaces mounted flat-panel TV.

Specifications, Features, and Options (Cont'd)

KEY : S : Standard Feature | O : Optional Feature; Additional costs may apply | D : Dependent Feature; Feature is bundled with another optional feature | – : Not Available

KITCHEN

- Stainless Steel Residential Refrigerator
- Stainless Steel Convection Microwave with Exterior Venting
- Double Bowl Kitchen Sink with Single Lever Faucet and Pull-down Sprayer
- Panoramic Galley Window
- LED Countertop Lighting
- Full Tile Backsplash
- Solid Surface Galley Countertop, Sink, and Cooktop Cover

KITCHEN OPTIONS		32 SA	32 SA	34 PA	36 LA	36 UA
Cooking Appliances	Three-Burner Liquid Propane Cooktop	S	S	S	S	S
	Oven Range with Liquid Propane Cooktop	O	O	O	O	O

BEDROOM

- Under Bed Storage
- Bedside Windows
- Bed Comforter with Throw Pillows
- Strategically-placed, Handcrafted Privacy Door
- Nightstand with Solid Surface Tops
- Mounted Flat-panel TV
- Centralized Entertainment Center ¹
- Wardrobe with Drawers Underneath
- Laundry Hamper

BEDROOM OPTIONS		32 FA	32 SA	34 PA	36 LA	36 UA
Mattress	Memory Foam King Mattress (72" x 80")	S	S	O	–	S
	Memory Foam Queen Mattress (60" x 80")	O	O	S	S	O
Bed Slide	Overhead Cabinet with Headboard	S	–	S	S	–
	Window at Head of Bed	–	S	–	–	S
Ceiling Fan		O	O	O	O	O

¹ Houses BluRay® player, satellite receiver, and cable TV hook-up.

BATHROOM

- (1) Porcelain Master Bathroom Sink
- Solid Surface Lavatory Top
- One-Piece Molded Fiberglass Shower ¹ **UPDATED**
- Handheld Shower Head with Slide Bar
- Shower Skylight
- Shower LED Light with Sliding Cover
- Towel and Toilet Paper Holders
- Mirrored Medicine Cabinet
- Roof Vent Fan

BATHROOM OPTIONS		32 FA	32 SA	34 PA	36 LA	36 UA
Number of Bathrooms	(1) Bathroom	S	S	S	–	–
	(1) Bathroom and (1) Half-bath ²	–	–	–	S	S
Toilet	(1) Gravity Flush Toilet	S	S	S	–	–
	(1) Gravity Flush Toilet and (1) Macerator Toilet	–	–	–	S	S

¹ Added foot ledge and removed molded-in shower seats to allow for more room.

² All half-baths contain a toilet and a solid surface countertop with a single porcelain sink.

Because of progressive improvements and specifications, standard and optional equipment are subject to change without notice or obligation. For a complete and up-to-date list of available options and specifications, visit tiffinmotorhomes.com.

1

YEAR OR 12,000 MILES
LIMITED WARRANTY

5

YEARS OR 50,000 MILES
DELAMINATION
LIMITED WARRANTY

10

YEARS OR 50,000 MILES
CONSTRUCTION
LIMITED WARRANTY

1

YEAR COACH
ROADSIDE SERVICE

∞

ONGOING
CUSTOMER SUPPORT



TIFFIN

MOTORHOMES

FOR PARTS & SERVICE CALL 256.356.0261 OR VISIT TIFFINMOTORHOMES.COM | 105 2ND ST NW RED BAY, AL 35582  

©2021 Tiffin Motorhomes, Inc. Allegro®, Allegro Breeze®, Allegro RED®, Phaeton®, Allegro Bus®, Zephyr®, Wayfarer®, Roughing It Smoothly®, Open Road®, PowerGlide®, Pusher® and Cahaba® are registered trademarks of Tiffin Motorhomes, Inc. All rights reserved.
For all information concerning the limited warranty provided by Tiffin, please refer to the full written limited warranty set forth on the Tiffin website or held by our authorized dealerships. Please note, some interior furnishings not included.