

CLASS-A

# ALLEGRO RED 360

MODEL YEAR 2023 | PRODUCT UPDATES

Initial MY2023 Model Change Plans, Subject to Change in Full Production

Date Revised: 6/24/22

**TIFFIN**

20  
23

## What's New Summary - Allegro RED 360

### WHAT'S NEW

---

- Two New Fabric Suites (Stoney Creek & Soft Suede)
- Two New Ultraleather Colors (Trail and Taupe Hills)
- Two New Tiles (Vicinity Natural & Contessaora)
- Generation 5 Paint Schemes
- 50th Anniversary Exterior Paint Color Packages
- 50th Anniversary Decal
- Removed Molded-in Shower Seats
- Updated Dinette Boothe Seating for Lift Up Seat Storage Access
- New Wi-Fi Booster
- Cellular Signal Booster Now Available
- Centralized Entertainment Center Now Located Behind Bedroom TV on 38 KA
- AGM Battery Option Now Available
- Keyless Entry Via New Exterior Spyder Panel (Entry Door Only)
- Updated Furniture Styling
- Updated Black Hardware and Plumbing Fixtures
- Updated Dinette Computer Workstation Option
- New 14.5' Lippert™ On-The-Go™ Ladder
- Freestanding Recliner and Sofa Locations Now Swapped on 33 AA
- Chrome Dryer Vents

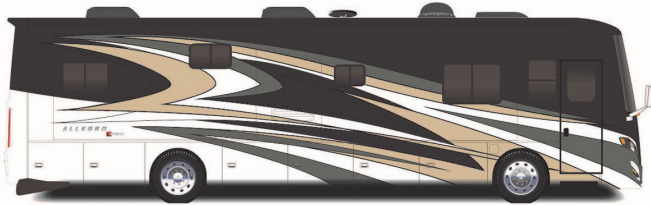
### NO LONGER AVAILABLE

---

- 37 PA Floorplan
- Urban Putty II, Dark Brew II, Silver
- Light III Fabric Suites
- Belgian and Cocoon Ultraleather Colors
- Vicinity & Articulo White Tile
- L-Shapes Sofa Furniture Options

## Premium Paint System

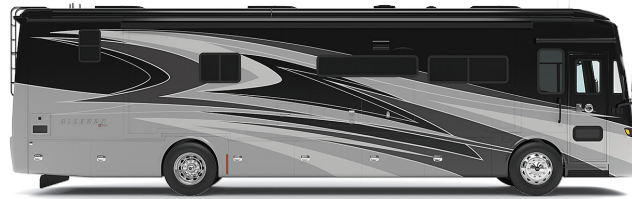
Our eight-step, full-body paint system features premium grade paints sealed with three layers of superclear coat with ultraviolet protection. An additional layer of high-performance film protects the front of the coach and select areas.



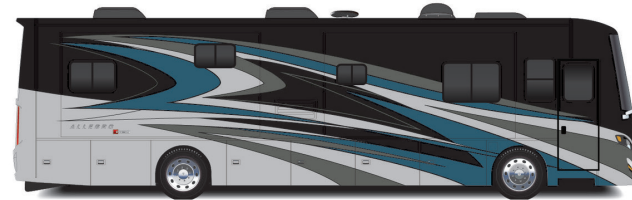
50TH ANNIVERSARY

NEW

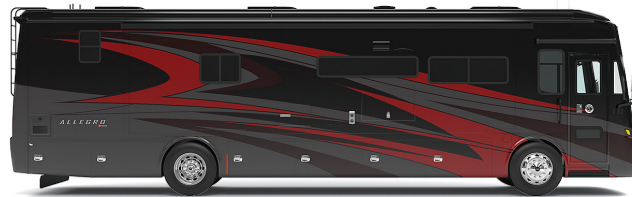
## GENERATION 4



G4 NASA



G4 EURO BLUE



G4 FIRE OPAL



G4 RUSTIC CANYON



G4 FROSTED GRANITE

## GENERATION 5



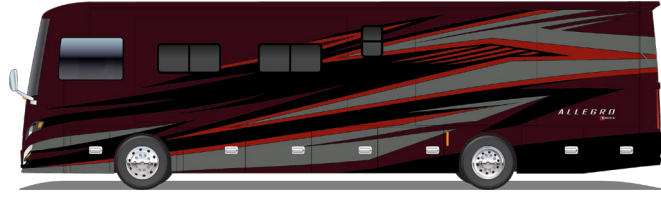
G5 NASA

NEW



G5 EURO BLUE

NEW



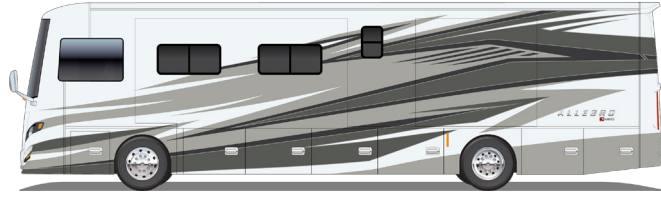
G5 FIRE OPAL

NEW



G5 RUSTIC CANYON

NEW

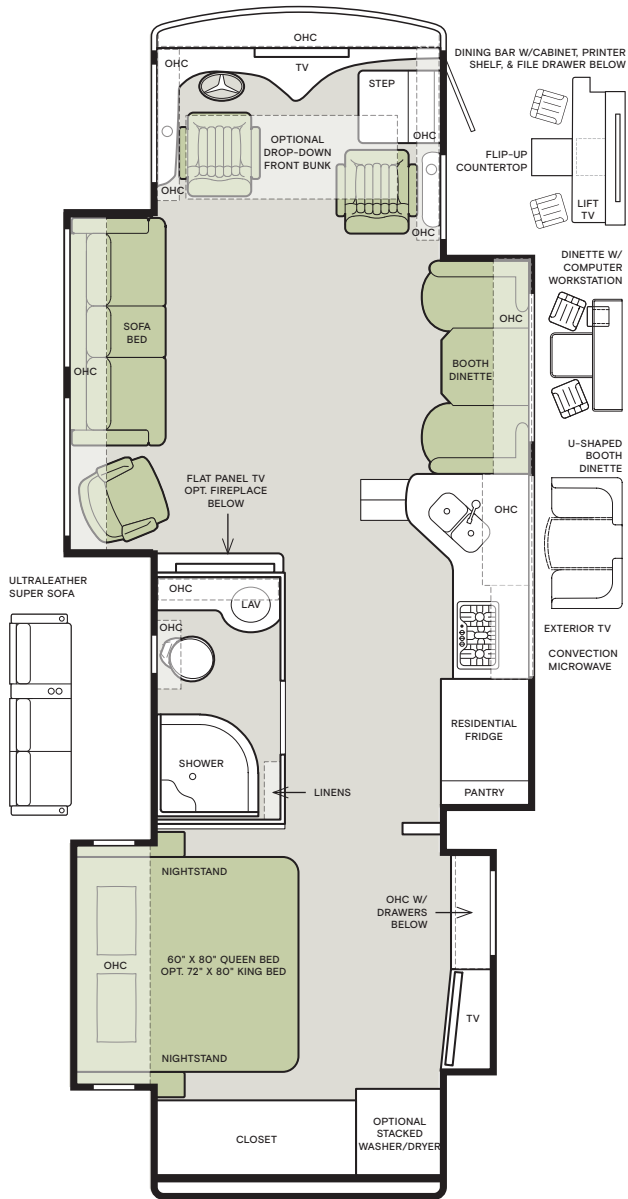


G5 FROSTED GRANITE

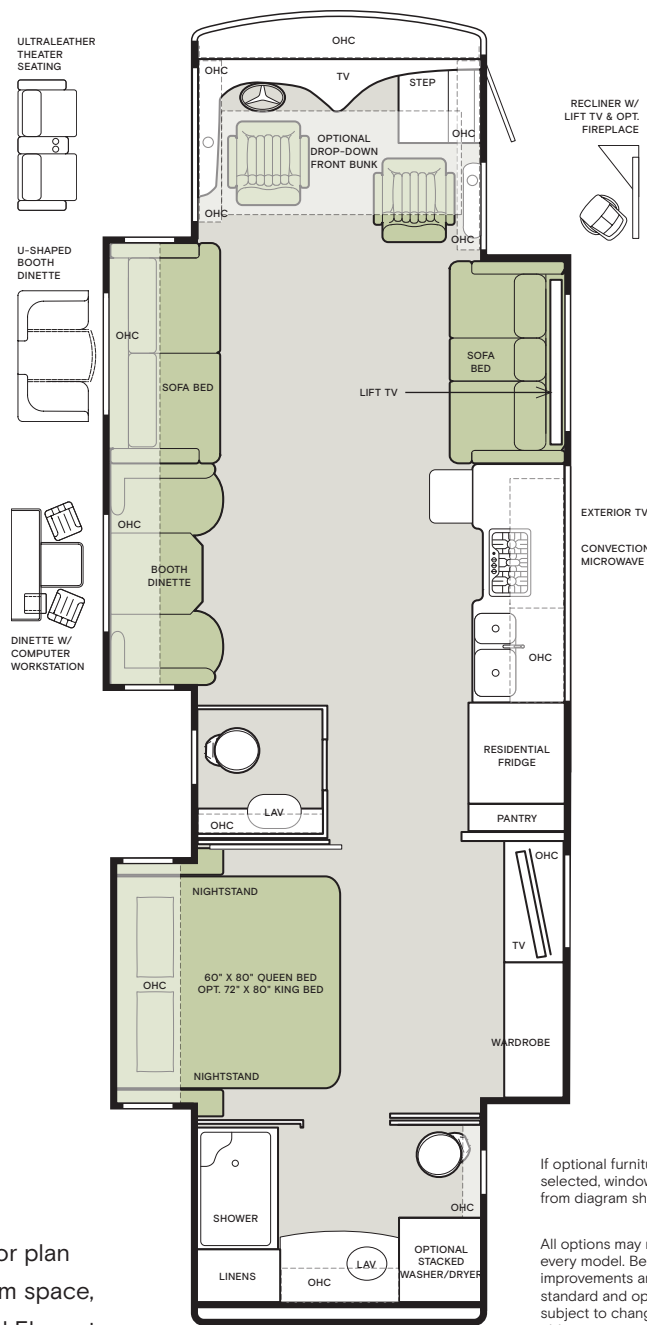
NEW

Images shown are representations of paint layouts and colors only and do not reflect all exterior features or options.

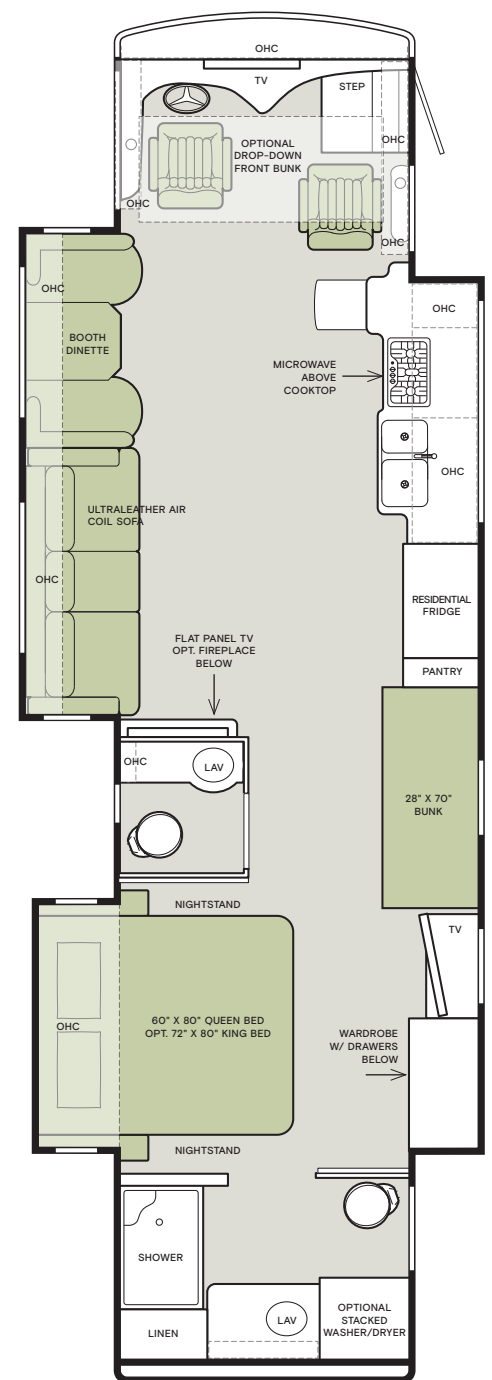
# 33 AA



# 37 BA



# 38 KA



## Floor Plans

The design of every Allegro RED 360 floor plan must meet four essential criteria: Maximum space, Optimal organization, Relaxation plus, and Elegant atmosphere. Tiffin's MORE Plans offer your family the most comfortable layout for life on the road.



If optional furniture combinations are selected, window locations may vary from diagram shown.

All options may not be available in every model. Because of progressive improvements and specifications, standard and optional equipment are subject to change without notice or obligation.

For a complete and up-to-date list of available options and specifications, visit [tiffinmotorhomes.com](http://tiffinmotorhomes.com).

## Interior Décor

Make your experience on the road all your own. Express yourself by choosing the interior appointments such as cabinet finishes, flooring, and décor ensembles for every part of your motorhome. In the 2023 Allegro RED 360, you'll be able to go in style no matter where you go.

Because of progressive improvements and specifications, standard and optional equipment are subject to change without notice or obligation. For a complete and up-to-date list of available options and specifications, visit [tiffinmotorhomes.com](http://tiffinmotorhomes.com).

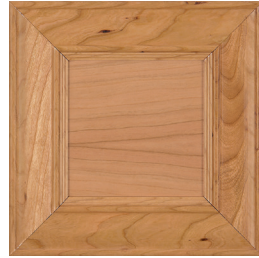
### CABINETS



AMBER GLAZED

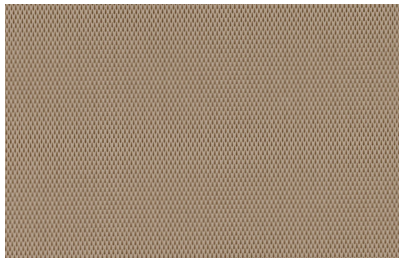


SHADOW



NATURAL ALDER

### ULTRALEATHER



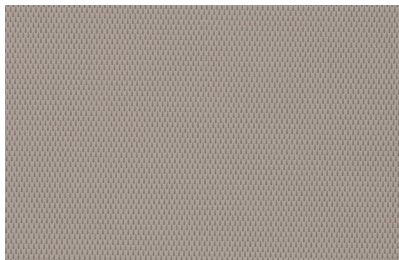
TRAIL

NEW



VICINITY NATURAL (S)  
Matte Finish Tile

NEW



TAUPE HILLS

NEW



CONESSAORA (O)  
Glossy Finish Tile

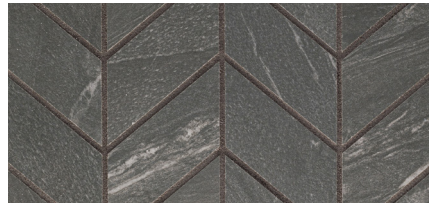
NEW

### FLOOR TILE

## STONE CREEK NEW



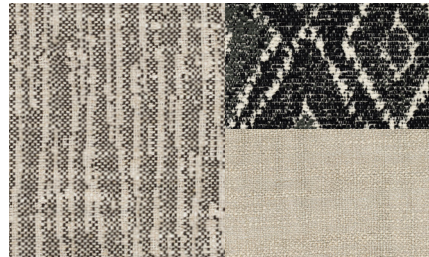
WINDOW TREATMENT



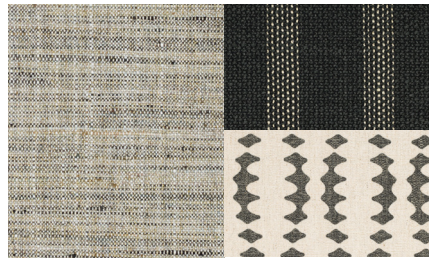
BACKSPLASH



COUNTERTOP



LIVING ROOM

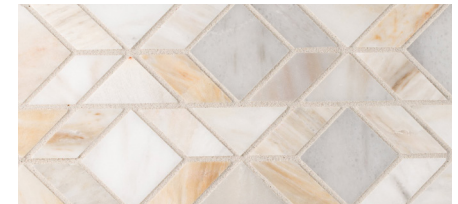


MASTER SUITE

## SOFT SUEDE NEW



WINDOW TREATMENT



BACKSPLASH



COUNTERTOP



LIVING ROOM



MASTER SUITE

1

YEAR OR 12,000 MILES  
LIMITED WARRANTY

5

YEARS OR 50,000 MILES  
DELAMINATION  
LIMITED WARRANTY

10

YEARS OR 50,000 MILES  
CONSTRUCTION  
LIMITED WARRANTY

1

YEAR COACH  
ROADSIDE SERVICE

∞

ONGOING  
CUSTOMER SUPPORT

FOR PARTS & SERVICE CALL 256.356.0261 OR VISIT [TIFFINMOTORHOMES.COM](http://TIFFINMOTORHOMES.COM)

105 2ND ST NW RED BAY, AL 35582 [f](#) [i](#)



**TIFFIN**

MOTORHOMES

©2021 Tiffin Motorhomes, Inc. Allegro®, Allegro Breeze®, Allegro RED®, Phaeton®, Allegro Bus®, Zephyr®, Wayfarer®, Roughing It Smoothly®, Open Road®, PowerGlide®, Pusher® and Cahaba® are registered trademarks of Tiffin Motorhomes, Inc. All rights reserved.  
For all information concerning the limited warranty provided by Tiffin, please refer to the full written limited warranty set forth on the Tiffin website or held by our authorized dealerships. Please note, some interior furnishings not included.