

CLASS-A

# ALLEGRO BUS

MODEL YEAR 2023 | PRODUCT UPDATES

Initial MY2023 Model Change Plans, Subject to Change in Full Production

Date Revised: 9/15/22

**TIFFIN**

20  
23







What's New Summary - Allegro Bus

WHAT'S NEW

<ul style="list-style-type: none"><li>• Three New Fabric Suites (Waypoint, Lagos, &amp; Fox Hollow)</li><li>• Two New Ultraleather Colors (Tatami Mat &amp; Rice Paper)</li><li>• Two New Tile Options (Catalina Ice &amp; Catalina Maple)</li><li>• Generation 12 Paint Schemes</li><li>• Two 50th Anniversary Exterior Paint Color Packages</li><li>• 50th Anniversary Decal</li></ul>	<ul style="list-style-type: none"><li>• New Wi-Fi Booster</li><li>• Cellular Signal Booster Now Available</li><li>• Increased Storage Area Under Safe</li><li>• Updated Radiator Grill</li><li>• Updated Outdoor Kitchen Counter Top</li><li>• Tile in Slide-outs Standard on 45 FP and 45 OPP</li><li>• Updated Security System</li><li>• Two Load Centers Now Standard Across All Models</li></ul>	<ul style="list-style-type: none"><li>• Updated Furniture Styling</li><li>• 18,000-pound GAWR, Front - Tag Axles Only</li><li>• Updated Pantry</li><li>• Updated Dinette Computer Workstation Option</li><li>• Black Faucets and Hardware Accessories</li><li>• Updated Galley</li><li>• New 14.5' Lippert™ On-The-Go™ Ladder</li><li>• Chrome Dryer Vents</li></ul>
--	--	--

NO LONGER AVAILABLE

<ul style="list-style-type: none"><li>• 37 AP &amp; 40 AP Floorplans</li><li>• Tempest III, Chanel II, &amp; Latte III Fabric Suites</li><li>• Contemporary Ceiling Treatment</li></ul>	<ul style="list-style-type: none"><li>• Silkworm &amp; Gray Owl Ultraleather Colors</li><li>• Vicinity White and Tuscany Sea Salt Tile</li><li>• Generation 10 Paint Schemes</li></ul>	<ul style="list-style-type: none"><li>• L-Shapes Sofa Furniture Options</li><li>• Luster Sheen Cabinetry Finish</li><li>• Mobileye® Collision Avoidance System</li></ul>
---	--	--

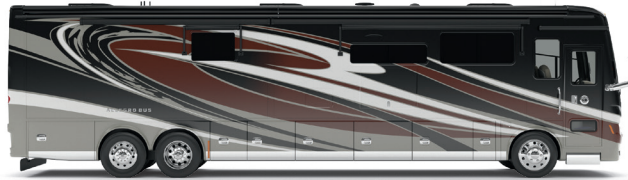
Because of progressive improvements and specifications, standard and optional equipment are subject to change without notice or obligation. For a complete and up-to-date list of available options and specifications, visit [tiffinmotorhomes.com](http://tiffinmotorhomes.com).

## Premium Paint System

Our eight-step full-body paint system features premium grade paints sealed with four layers of clear coat with ultraviolet protection. An additional layer of high-performance film protects the front of the coach and select areas.

Our Generation 11, Generation 12, and the Limited Edition 50th Anniversary premium paint schemes now give you 14 different ways to make your 2023 Allegro Bus your very own. To learn more, visit [tiffinmotorhomes.com](https://tiffinmotorhomes.com).

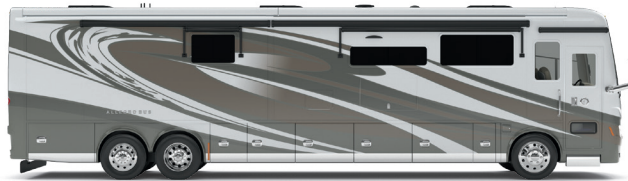
## GENERATION 11



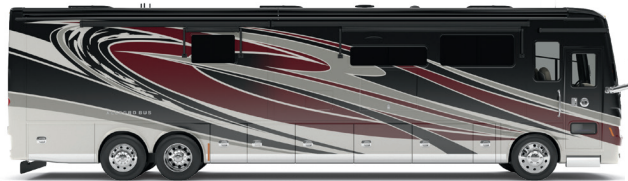
G11 CINDERWOOD



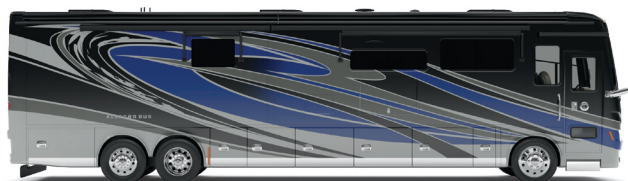
G11 FIRE OPAL



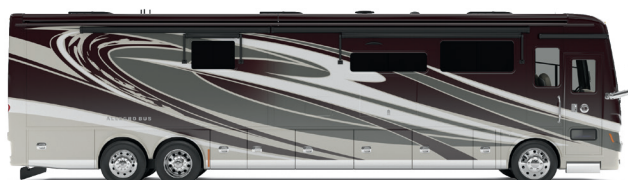
G11 FROSTED GRANITE



G11 SUNLIT SAND

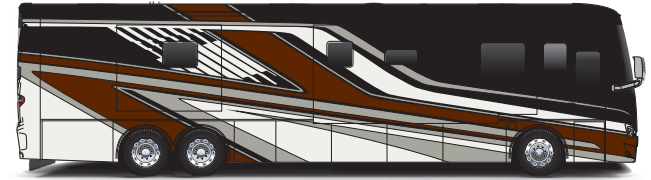


G11 WATERFALL



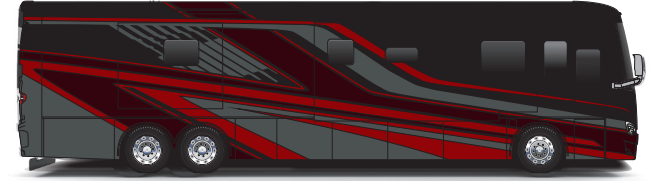
G11 WHITE MAHOGANY

## GENERATION 12



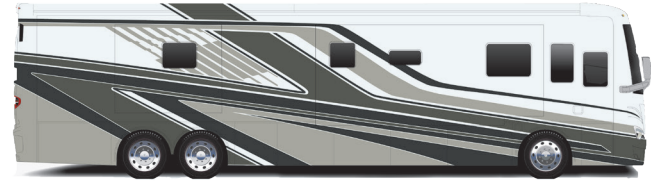
G12 CINDERWOOD

NEW



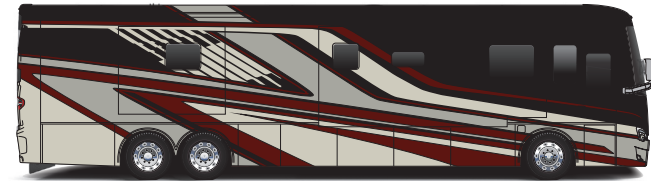
G12 FIRE OPAL

NEW



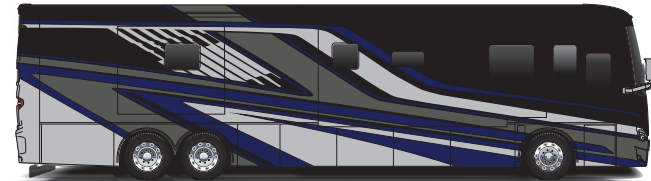
G12 FROSTED GRANITE

NEW



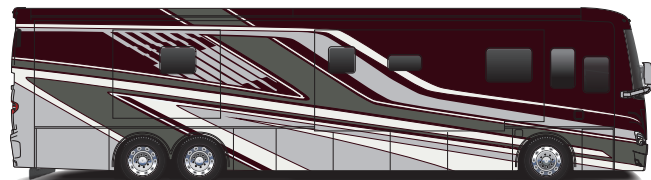
G12 SUNLIT SAND

NEW



G12 WATERFALL

NEW



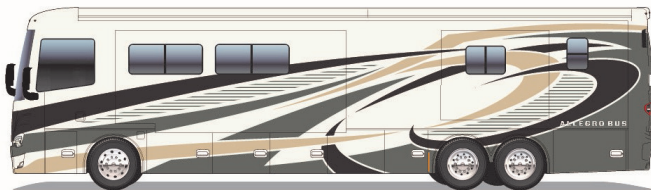
G12 WHITE MAHOGANY

NEW

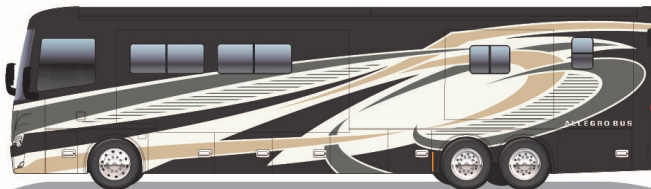


50TH ANNIVERSARY

NEW



LIGHT



DARK

Images shown are representations of paint layouts and colors only and do not reflect all exterior features or options.

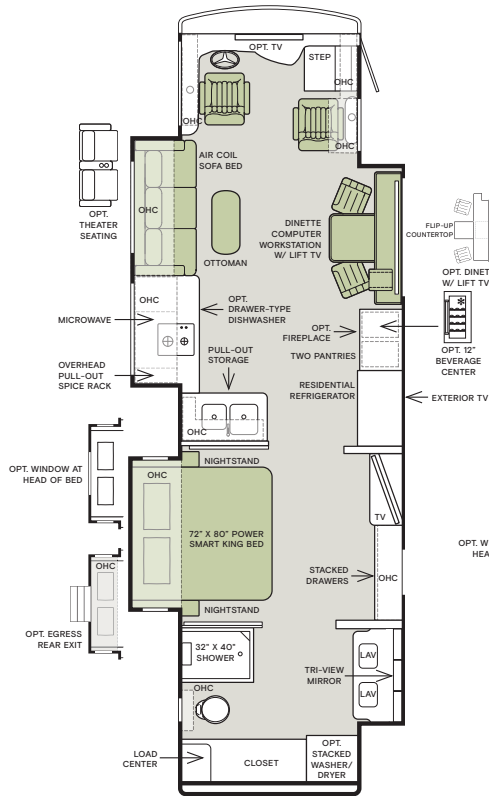


## Floor Plans

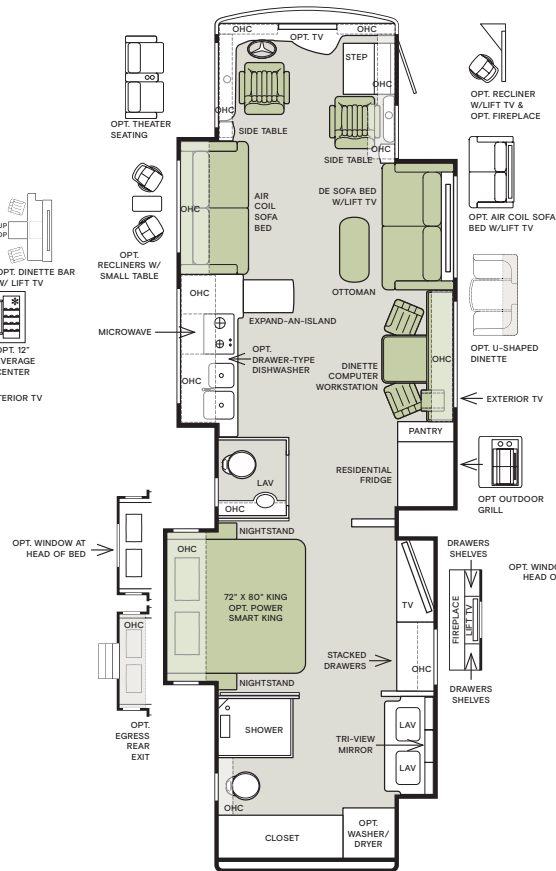


The design of every Allegro Bus floor plan must meet four essential criteria:  
Maximum space, Optimal organization, Relaxation plus, and Elegant atmosphere.  
Tiffin's MORE Plans offer your family the most comfortable layout for life on the road.

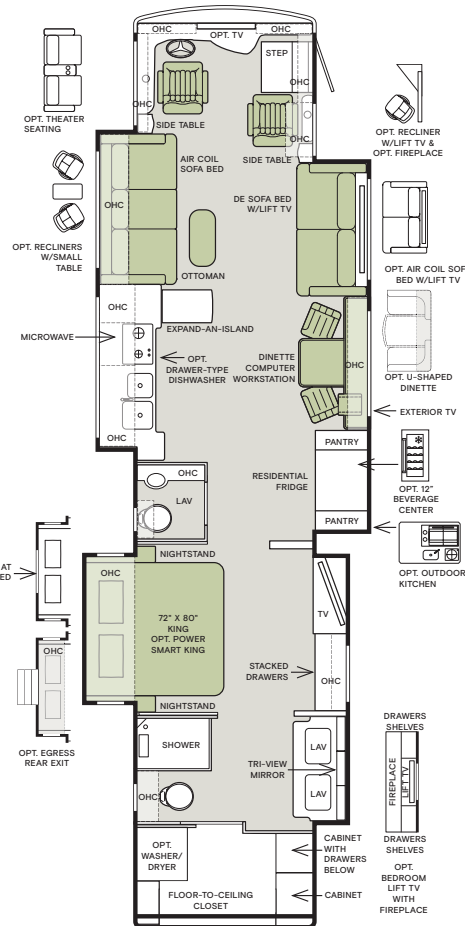
35 CP



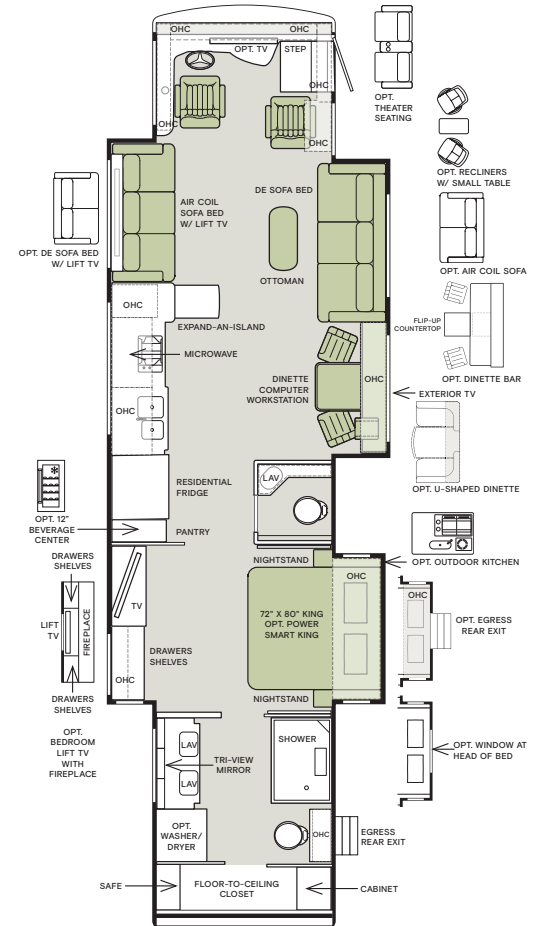
40 IP



45 OPP



45 FP



If optional furniture combinations are selected, window locations may vary from diagram shown.

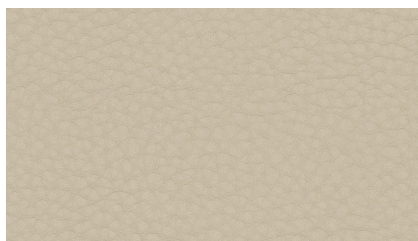
All options may not be available in every model. Because of progressive improvements and specifications, standard and optional equipment are subject to change without notice or obligation.

For a complete and up-to-date list of available options and specifications, visit [tiffinmotorhomes.com](http://tiffinmotorhomes.com).

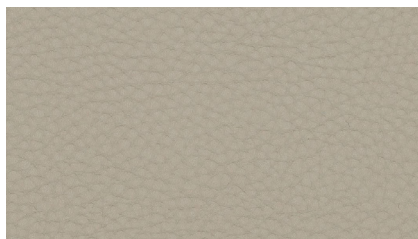
## Interior Décor

Make your experience on the road all your own. Express yourself by choosing the interior appointments such as cabinet finishes, flooring, and décor ensembles for every part of your motorhome. In the 2023 Allegro Bus, you'll be able to travel in style no matter where you go.

### ULTRALEATHER



TATAMI MAT



RICE PAPER

### CABINETS



GLAZED HONEY NATURAL CHERRY



SHADOW



GLAZED CHERRY WOOD



GLAZED CANYON CHERRY



PURE LINEN

### FLOORING



CATALINA ICE

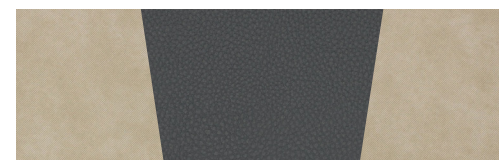
GLOSSY FINISH TILE



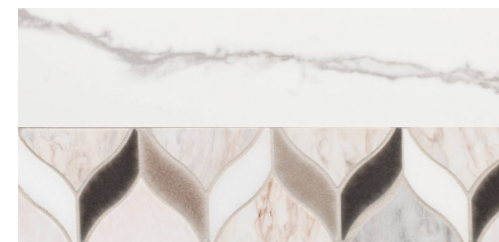
CATALINA MAPLE

GLOSSY FINISH TILE

### ART DECO II



WINDOW TREATMENT



BACKSPLASH



COUNTERTOP



LIVING ROOM



MASTER SUITE

Because of progressive improvements and specifications, standard and optional equipment are subject to change without notice or obligation. For a complete and up-to-date list of available options and specifications, visit [tiffinmotorhomes.com](http://tiffinmotorhomes.com).



FOX HOLLOW NEW



WINDOW TREATMENT



BACKSPLASH



COUNTERTOP

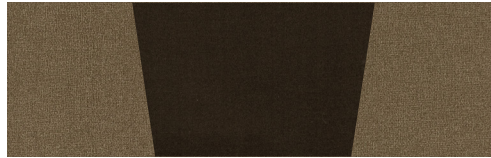


LIVING ROOM

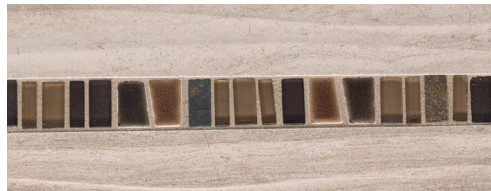


MASTER SUITE

LAGOS NEW



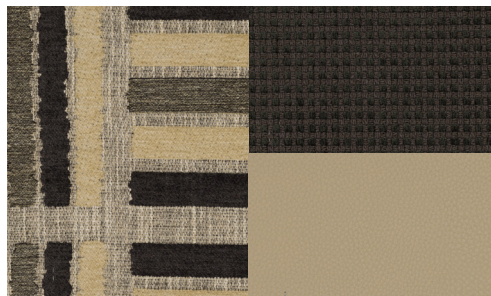
WINDOW TREATMENT



BACKSPLASH



COUNTERTOP



LIVING ROOM

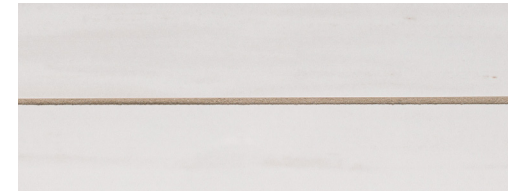


MASTER SUITE

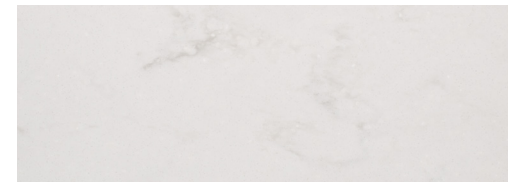
WAYPOINT NEW



WINDOW TREATMENT



BACKSPLASH



COUNTERTOP



LIVING ROOM



MASTER SUITE

Specifications, Features, and Options

KEY : S : Standard Feature | O : Optional Feature; Additional costs may apply | D : Dependent Feature; Feature is bundled with another optional feature | — : Not Available

WEIGHTS AND MEASURES	35 CP	40 IP	45 OPP		45 FP	
HORSEPOWER	450 HP (S)	450 HP (S)	450 HP (S)	605 HP (O)	450 HP (S)	605 HP (O)
DIMENSIONS						
Overall Length (approx.) <sup>1</sup>	37' 5"	41'	45'	45'	45'	45'
Overall Width <sup>1</sup>	101"	101"	101"	101"	101"	101"
Overall Height	13' 3"	13' 3"	13' 3"	13' 3"	13' 3"	13' 3"
Minimum Garage Height	14'	14'	14'	14'	14'	14'
Interior Height	83"	83"	83"	83"	83"	83"
Interior Width	96"	96"	96"	96"	96"	96"
Basement Storage (cubic feet, approx.)	180	229	257	237	257	237
Wheel Base	232"	276"	323"	316"	323"	316"
WEIGHT LIMITS						
GAWR-Front (pounds)	17,000	17,000	18,000	18,000	18,000	18,000
GAWR-Rear (pounds)	24,000	24,000	23,000	23,000	23,000	23,000
GAWR-Tag Axle (pounds)	—	—	13,300	13,000	13,300	13,000
GVWR (pounds)	41,000	41,000	51,000	51,000	51,000	51,000
Maximum Trailer Weight (pounds) <sup>2</sup>	10,000	10,000	15,000	20,000	15,000	20,000
Hitch Rating (pounds)	10,000	10,000	15,000	20,000	15,000	20,000
GCWR (pounds)	51,000	51,000	66,000	71,000	66,000	71,000
CAPACITIES						
Fuel Tank (gallons)	150	150	150	150	150	150
DEF Tank (gallons) <sup>3</sup>	10	10	10	15	10	15
Fresh Water (gallons)	100	100	100	100	100	100
Grey Water (gallons)	100	100	100	100	100	100
Black Water (gallons)	55	55	55	55	55	55

<sup>1</sup> The approximated coach width and length does not include side-view mirrors and rear ladders.  
<sup>2</sup> Maximum trailer weight is dependent on the loading and towing variables which include the GVWR, GAWR, and GCWR, as well as adequate trailer brakes.  
<sup>3</sup> Diesel Exhaust Fluid (DEF) is the active component used in Selective Catalytic Reduction (SCR) engines to reduce nitrogen oxide emissions by 90% to meet EPA standards.

PLUMBING		
<ul style="list-style-type: none"><li>Aqua View Showermiser™</li><li>Water Filter</li><li>Water Pump Switch Access from Spyder System and Sewer Bay Board</li><li>Low-point Water Drain Lines</li><li>Black Holding Tank Flush System</li></ul>	<ul style="list-style-type: none"><li>Gravity Water Fill</li><li>Heated Water and Holding Tank Compartment</li><li>SeeLevel™ Tank Monitor</li><li>Centralized Exterior Sewer Bay with Gravity Black and Grey Evacuation Ports</li></ul>	<ul style="list-style-type: none"><li>Exterior Rinse Hose with Shower Head</li><li>Sewer Bay Hand Sanitizer and Paper Towel Holders</li><li>Sewer Hose Storage</li><li>Fresh Water Hose with Power Retract Reel</li></ul>

CHASSIS OPTIONS		35 CP	40 IP	45 OPP	45 FP
Water Heater	Aqua-Hot® 450D Heat Exchanger <sup>1</sup>	S	S	D	D
	Aqua-Hot® 600D Heat Exchanger <sup>2</sup>	—	—	D	D

<sup>1</sup> Standard with 450 HP engine option. Not available with 605 HP option. Aqua-Hot® heat exchanger provides both heated air and water.  
<sup>2</sup> Standard with 605 HP engine option. Not available with 450 HP option. Aqua-Hot® heat exchanger provides both heated air and water.

CHASSIS AND DRIVETRAIN					
<ul style="list-style-type: none"><li>PowerGlide® Rear Engine Diesel Chassis</li><li>Aluminum Wheels</li><li>Front and Rear 315/80 R22.5 Tires</li><li>Combination Valid™ Air Leveling System with Hydraulic Leveling Jacks</li><li>Air Ride Suspension System</li><li>Independent Front Suspension</li><li>Side-mounted Radiator</li><li>Full Air Brake System with Automatic Slack Adjusters</li><li>Front Disc Brakes and Rear Drum Brakes</li><li>Three-stage Compression Brake<sup>1</sup> <b>NEW</b></li><li>Air Force One Tow Vehicle Brake System</li><li>Dual Fuel Fill Capable</li><li>Automatic Traction Control</li><li>Adaptive Cruise Control</li><li>Collision Mitigation with Forward Warning and Active Braking</li><li>Electronic Stability Control</li><li>Tire Pressure Monitoring</li></ul>					
CHASSIS OPTIONS		35 CP	40 IP	45 OPP	45 FP
Engine	Cummins L9 450 HP/1,250 lb-ft Torque <sup>2</sup>	S	S	S	S
	Cummins X15 605 HP/1,950 lb-ft Torque <sup>3</sup>	—	—	O	O
Alternator	210-Amp Alternator <sup>4</sup>	S	S	D	D
	280-Amp Alternator <sup>5</sup>	—	—	D	D
Transmission	Allison® 3000 MH 6-speed Automatic Transmission with Lock-up Torque Converter <sup>4</sup>	S	S	D	D
	Allison® 4000 MH 6-speed Automatic Transmission with Lock-up Torque Converter <sup>5</sup>	—	—	D	D
Chassis Batteries	(2) 12-Volt Flooded Lead-Acid	S	S	D	D
	(3) 12-Volt Flooded Lead-Acid	—	—	D	D
Steerable Tag Axle		—	—	S	S
Service Brakes	Tag Axle Drum Brakes <sup>4</sup>	—	—	D	D
	Tag Axle Disc Brakes <sup>5</sup>	—	—	D	D

<sup>1</sup> Two-stage compression brake is no longer available.  
<sup>2</sup> Peak horsepower achieved at 2,100 RPM. Peak torque achieved at 1,400 RPM.  
<sup>3</sup> Peak horsepower achieved at 1,800 RPM. Peak torque achieved at 1,150 RPM.  
<sup>4</sup> Standard with 450 HP engine option. Not available with 605 HP engine option.  
<sup>5</sup> Standard with 605 HP engine option. Not available with 450 HP engine option.

ELECTRICAL			
<ul style="list-style-type: none"><li>• All-Electric Coach <sup>1</sup></li><li>• Spyder Multiplex System Featuring App Compatibility</li><li>• 10.0-Kilowatt Onan® Quiet Diesel Generator</li><li>• Generator Slide Tray</li><li>• 2,800-Watt Pure Sine Wave Inverter with Auto-Gen Start and Interior Remote Control <sup>2</sup></li><li>• Extraordinaire™ Air Conditioning System</li><li>• (3) 15,000-BTU Roof Air Conditioners with Heat Pumps</li></ul>	<ul style="list-style-type: none"><li>• 50-Amp Shore Power with Powered Retract Reel</li><li>• In-motion Satellite Dish <sup>3</sup></li><li>• Prewiring for Winegard® Trav'ler™ Satellite</li><li>• Auxiliary Solar Port</li><li>• Energy Management System</li><li>• BluRay® Player</li><li>• Satellite Receiver</li><li>• Park Cable and Ground Satellite Hook-up</li><li>• HD Over-the-air Antenna <sup>4</sup></li></ul>	<ul style="list-style-type: none"><li>• Prep for Winegard® Connect™</li><li>• 12-Volt Breaker Panel</li><li>• 12-Volt Disconnect Switch</li><li>• Rotary Disconnect Switches for House Batteries, Chassis Batteries, and Inverter</li><li>• Ground Fault Circuit Interrupter (GFCI) Outlets at Galley, Lavatories, and Sewer Bay</li><li>• 110-Volt Exterior Receptacle</li><li>• Surge Guard® Transfer Switch</li><li>• USB Receptacles Throughout Coach</li></ul>	

<sup>1</sup> Space heating, water heating, and cooking appliances are electrically powered. All-electric coaches still require diesel for the engine and either shore power or a generator to operate air conditioning.  
<sup>2</sup> Automatic generator start capabilities controlled through Spyder Controls Multiplex System.  
<sup>3</sup> High-definition programming is not available on a domed satellite antenna unless you subscribe to DISH Network®.  
<sup>4</sup> Requires subscription.  
<sup>5</sup> Standard with flooded and extended cycle AGM batteries. Not available with lithium batteries.  
<sup>6</sup> Standard with 450 HP engine option. Not available with 605 HP option. Aqua-Hot® heat exchanger provides both heated air and water.  
<sup>7</sup> Standard with 605 HP engine option. Not available with 450 HP option. Aqua-Hot® heat exchanger provides both heated air and water.  
<sup>8</sup> Includes docking ports for aftermarket solar panels.





Specifications, Features, and Options (Cont'd)

KEY : S : Standard Feature | O : Optional Feature; Additional costs may apply | D : Dependent Feature; Feature is bundled with another optional feature | — : Not Available

DRIVER'S COMPARTMENT				
<ul style="list-style-type: none"><li>• Ultraleather Power Driver and Passenger Seats</li><li>• Integrated Seat Belts on Driver and Passenger Seats</li><li>• Lumbar Support on Driver and Passenger Seats</li><li>• Powered Passenger Seat Footrest</li><li>• Tilt and Telescoping Steering Wheel with Integrated Controls</li><li>• Adjustable Accelerator and Brake Pedals</li><li>• Backlit Dash Switches</li><li>• Storage Drawer in Dash</li><li>• Dual Dash Fans</li><li>• 12-Volt Dash Receptacle</li><li>• USB Dash Receptacles</li><li>• Valid™ LCD Instrument Cluster Display with Integrated Leveling Controls</li></ul>	• Contemporary Dash	• Ceiling Mounted Speakers		
	• Cupholders on Driver and Passenger Side	• In-dash Navigation System		
	• Built-in Driver and Passenger Consoles	• Auxiliary Start Switch		
	• Passenger Side Spyder System Control Panel	• Driver's Compartment Overhead Cabinets with Wooden Panel Doors		
• Passenger Side Phone Charging Station	• Driver and Passenger Map Lights	• Powered Opening Driver Side Window		
• Driver and Passenger Map Lights	• Passenger Side Phone Charging Station	• Solid, Non-opening Passenger Side Window		
• One-piece Panoramic Windshield	• Driver and Passenger Map Lights	• Powered Solar and Privacy Windshield Shade		
• Single-motor Intermittent Windshield Wipers	• One-piece Panoramic Windshield	• Powered Solar and Privacy Shades on Side Windows		
• Automatic LED Headlights	• Single-motor Intermittent Windshield Wipers	• Solid Surface Step Well		
• Side-view Cameras <sup>1</sup>	• Automatic LED Headlights	• Powered Step Well Cover		
• Color Back-up Camera Monitor	• Side-view Cameras <sup>1</sup>	• Storage Compartment Within Entry Steps		
• Blind Spot Monitoring System	• Color Back-up Camera Monitor	• Recessed Lighting Within Step Well		
• Stereo with AM & FM Radio, CD Player, and Satellite Radio <sup>2</sup>	• Blind Spot Monitoring System			
	• Stereo with AM & FM Radio, CD Player, and Satellite Radio <sup>2</sup>			
DRIVER'S COMPARTMENT OPTIONS				
	35 CP	40 IP	45 OPP	45 FP
360° View Camera <sup>3</sup>	O	O	O	O
Advanced Monitor System <sup>4</sup>	O	O	O	O
JBL® Sound System	O	O	O	O
Front Overhead TV	O	O	O	O
<sup>1</sup> Integrated within side-view mirrors and activated by turn signals.				
<sup>2</sup> Subscription required for satellite radio.				
<sup>3</sup> Requires JBL® Sound System and Advanced Monitor System options.				
<sup>4</sup> Includes (2) 10" monitors, (1) 7" passenger monitor, media center, AM & FM Radio, Satellite Radio (subscription required), and RV GPS. Requires JBL® Sound System.				

DINETTE AND LIVING AREA		35 CP	40 IP	45 OPP	45 FP
Driver Side Furniture	Ultraleather Air Coil Sofa <sup>1</sup>	S	S	S	—
	Theater Seating	O	O	O	—
	(2) Ultraleather Recliners	—	O	O	—
	Ultraleather Air Coil Sofa with Lift TV <sup>1</sup>	—	—	—	S
	Ultraleather DE Sofa with Lift TV <sup>2</sup>	—	—	—	O
Passenger Side Dinette	Ottoman with Internal Storage <sup>3</sup>	D	D	D	D
	Dinette Computer Workstation with TV Lift <sup>4</sup> <div>UPDATED</div>	S	—	—	—
	Dinette Bar with Lift TV	O	—	—	—
	Dinette Computer Workstation <sup>4</sup> <div>UPDATED</div>	—	S	S	S
	Ultraleather U-shaped Dinette	—	O	O	O
	Dinette Bar	—	—	—	O
	Overhead Dinette Cabinets	—	S	S	S
Passenger Side Furniture	Ultraleather DE Sofa Bed with Lift TV <sup>2</sup>	—	S	S	—
	Ultraleather Air Coil Sofa Bed with Lift TV <sup>1</sup>	—	O	O	—
	Ultraleather Recliner and Lift TV with Fireplace	—	O	O	—
	Ultraleather Recliner and Lift TV	—	O	—	—
	Ultraleather DE Sofa Bed <sup>2</sup>	—	—	—	S
	(2) Ultraleather Recliners	—	—	—	O
	Theater Seating	—	—	—	O
	Ultraleather Air Coil Sofa Bed <sup>1</sup>	—	—	—	O
	Fireplace <sup>5</sup>	O	—	—	—

<sup>1</sup> Piece of furniture sleeps two comfortably.

<sup>2</sup> Piece of furniture sleeps one comfortably.

<sup>3</sup> Standard unless theater seating option is chosen.

<sup>4</sup> Printer bump-out no longer available.

<sup>5</sup> Not compatible with beverage center on 35 CP.

KITCHEN				
<ul style="list-style-type: none"><li>• Stainless Steel Residential Refrigerator</li><li>• Stainless Steel Convection Microwave with Exterior Venting</li><li>• Double Bowl Kitchen Sink with Single Lever Faucet and Pull-down Sprayer</li></ul>	• Built-in Soap Dispenser	• Full Tile Backsplash		
	• Galley Overhead with Pull-out Drawers	• Solid Surface Galley Countertop, Sink, and Cooktop Cover		
	• Panoramic Galley Window	• Pull-out Utility Box Located Under Sink		
	• LED Countertop Lighting			
KITCHEN OPTIONS				
	35 CP	40 IP	45 OPP	45 FP
Decorative Wooden Refrigerator Panel	O	O	O	O
Cooking Appliances	Two-Burner Induction Cooktop	S	S	S
	Wolf® Induction Cooktop	O	O	O
InSinkErator® Instant Hot Water Faucet	O	O	O	O
Drawer-style Dishwasher	O	O	O	O
12" Beverage Center <sup>1</sup>	O	—	O	O
Expand-An-Island	—	S	S	S
<sup>1</sup> Not compatible with fireplace on 35 CP.				
BATHROOM				
<ul style="list-style-type: none"><li>• (2) Porcelain Master Bathroom Sinks</li><li>• Solid Suface Lavatory Top</li><li>• Solid Surface Shower Walls with Inlaid Tile and Residential Glass Door</li></ul>	• Shower Head with Detachable Hand-held Shower Wand	• Towel and Toilet Paper Holders		
	• Shower Skylight	• Medicine Cabinet with Tri-view Vanity Mirror		
	• Shower LED Light with Sliding Cover	• Roof Vent Fan		
BATHROOM OPTIONS				
	35 CP	40 IP	45 OPP	45 FP
Number of Bathrooms	(1) Bathroom	S	—	—
	(1) Bathroom and (1) Half-bath <sup>1</sup>	—	S	S
Toilet	(1) Macerator Toilet	S	—	—
	(2) Macerator Toilets	—	S	S
Pure Linen Master Bath Cabinets <sup>2</sup>	O	O	O	O
<sup>1</sup> All half-baths contain a toilet and a solid surface countertop with a single porcelain sink.				
<sup>2</sup> Replaces the chosen cabinetry stain used throughout the coach with Pure Linen for the master bathroom.				

BEDROOM				
<ul style="list-style-type: none"><li>• Bedside Windows</li><li>• Bed Comforter with Throw Pillows</li><li>• Strategically-placed, Handcrafted Privacy Door</li></ul>	• Nightstand with Solid Surface Tops	• Decorative Handcrafted Wood Ceiling Ring		
	• Centralized Entertainment Center <sup>1</sup>	• Safe		
	• Ceiling Fan			
BEDROOM OPTIONS				
	35 CP	40 IP	45 OPP	45 FP
Mattress	Memory Foam King Mattress (72" x 80")	—	S	S
	Power Smart King Bed (72" x 80")	S	O	O
Bed Slide	Overhead Cabinet with Headboard	S	S	S
	Window at Head of Bed <sup>2</sup>	O	O	O
Under Bed Storage <sup>3</sup>	—	D	D	D
Bedroom TV	Mounted Flat-panel TV	S	S	S
	Bedroom Lift TV with Fireplace	—	O	O
Bedroom Storage	Floor-to-ceiling Closet Space	S	—	S
	Walk-in Closet	—	—	—
	Solid Surface Countertops within Storage Spaces	—	—	S
Laundry Hamper	S	S	—	S
<sup>1</sup> Houses BluRay® player, satellite reciever, and cable TV hook-up.				
<sup>2</sup> Window option removes overhead cabinets.				
<sup>3</sup> Not available when optioned with Power Smart King Bed.				

Because of progressive improvements and specifications, standard and optional equipment are subject to change without notice or obligation. For a complete and up-to-date list of available options and specifications, visit tiffnmotorhomes.com.





Reflecting over four decades of innovation, Tiffin's proprietary PowerGlide Chassis demonstrates our ongoing commitment to delivering a motorhome experience that's precisely engineered for durability, reliability, performance, and control wherever your journey takes you.

#### MULTIPLEX WIRING WITH DIAGNOSTICS

The PowerGlide's multiplexed electrical system, with auto-reset fuses and relays, uses less wiring and increases reliability, efficiency, and flexibility.

#### DYNAMOMETER TESTING

The PowerGlide's dynamometer testing simulates full power road testing, enabling us to better assess engine performance, cooling system function, and instrumentation.

#### POWERGLIDE CHASSIS WARRANTY

The PowerGlide carries a Tiffin-backed limited warranty for three years or 50,000 miles against defects in materials and workmanship.

#### HUCK-BOLTED CONSTRUCTION

The PowerGlide's Huck Bolts are precision engineered two-piece fasteners. Huck Bolts are vibration resistant and provide direct metal to metal contact when installed.

For all information concerning the PowerGlide limited warranty provided by Tiffin, please refer to the full, written limited warranty set forth on the Tiffin website or held by our authorized dealerships. For a complete and up-to-date list of available options and specifications, visit [tiffinmotorhomes.com](http://tiffinmotorhomes.com).

1

YEAR OR 12,000 MILES  
LIMITED WARRANTY

5

YEARS OR 50,000 MILES  
DELAMINATION  
LIMITED WARRANTY

10

YEARS OR 50,000 MILES  
CONSTRUCTION  
LIMITED WARRANTY

1

YEAR COACH  
ROADSIDE SERVICE

∞

ONGOING  
CUSTOMER SUPPORT

FOR PARTS & SERVICE CALL 256.356.0261 OR VISIT [TIFFINMOTORHOMES.COM](http://TIFFINMOTORHOMES.COM)

105 2ND ST NW RED BAY, AL 35582 [f](#) [i](#)



**TIFFIN**

MOTORHOMES

©2021 Tiffin Motorhomes, Inc. Allegro®, Allegro Breeze®, Allegro RED®, Phaeton®, Allegro Bus®, Zephyr®, Wayfarer®, Roughing It Smoothly®, Open Road®, PowerGlide®, Pusher® and Cahaba® are registered trademarks of Tiffin Motorhomes, Inc. All rights reserved.  
For all information concerning the limited warranty provided by Tiffin, please refer to the full written limited warranty set forth on the Tiffin website or held by our authorized dealerships. Please note, some interior furnishings not included.