

CLASS-A

ALLEGRO BUS

MODEL YEAR 2023 | PRODUCT UPDATES

Initial MY2023 Model Change Plans, Subject to Change in Full Production

Date Revised: 9/13/22

TIFFIN

20
23



What's New Summary - Allegro Bus

WHAT'S NEW

<ul style="list-style-type: none">• Three New Fabric Suites (Waypoint, Lagos, & Fox Hollow)• Two New Ultraleather Colors (Tatami Mat & Rice Paper)• Two New Tile Options (Catalina Ice & Catalina Maple)• Generation 12 Paint Schemes• Two 50th Anniversary Exterior Paint Color Packages• 50th Anniversary Decal	<ul style="list-style-type: none">• New Wi-Fi Booster• Cellular Signal Booster Now Available• Increased Storage Area Under Safe• Updated Radiator Grill• Updated Outdoor Kitchen Counter Top• Tile in Slide-outs Standard on 45 FP and 45 OPP• Updated Security System• Two Load Centers Now Standard Across All Models	<ul style="list-style-type: none">• Updated Furniture Styling• 18,000-pound GAWR, Front - Tag Axles Only• Updated Pantry• Updated Dinette Computer Workstation Option• Black Faucets and Hardware Accessories• Updated Galley• New 14.5' Lippert™ On-The-Go™ Ladder• Chrome Dryer Vents
--	--	--

NO LONGER AVAILABLE

<ul style="list-style-type: none">• 37 AP & 40 AP Floorplans• Tempest III, Chanel II, & Latte III Fabric Suites• Contemporary Ceiling Treatment	<ul style="list-style-type: none">• Silkworm & Gray Owl Ultraleather Colors• Vicinity White and Tuscany Sea Salt Tile• Generation 10 Paint Schemes	<ul style="list-style-type: none">• L-Shapes Sofa Furniture Options• Luster Sheen Cabinetry Finish• Mobileye® Collision Avoidance System
---	--	--

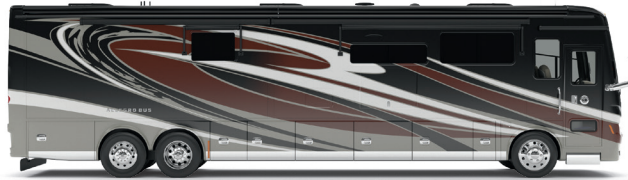
Because of progressive improvements and specifications, standard and optional equipment are subject to change without notice or obligation. For a complete and up-to-date list of available options and specifications, visit tiffinmotorhomes.com.

Premium Paint System

Our eight-step full-body paint system features premium grade paints sealed with four layers of clear coat with ultraviolet protection. An additional layer of high-performance film protects the front of the coach and select areas.

Our Generation 11, Generation 12, and the Limited Edition 50th Anniversary premium paint schemes now give you 14 different ways to make your 2023 Allegro Bus your very own. To learn more, visit tiffinmotorhomes.com.

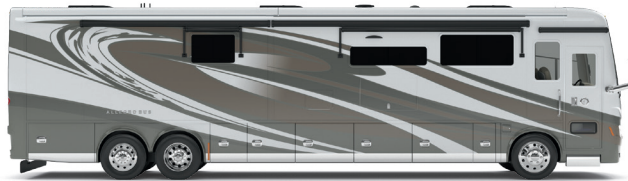
GENERATION 11



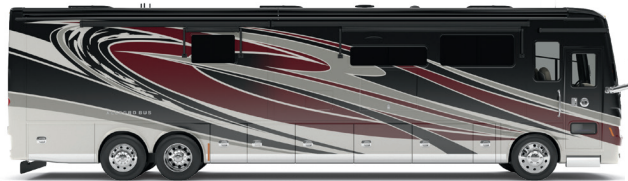
G11 CINDERWOOD



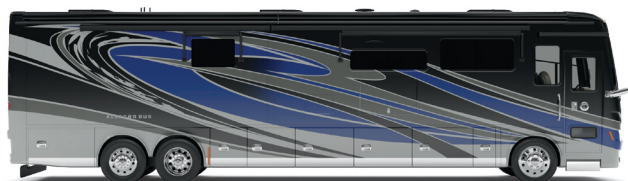
G11 FIRE OPAL



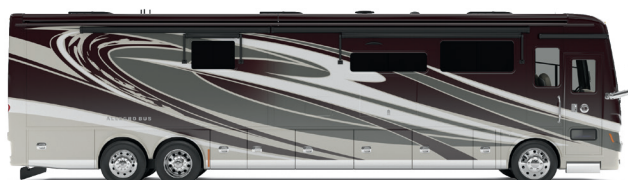
G11 FROSTED GRANITE



G11 SUNLIT SAND

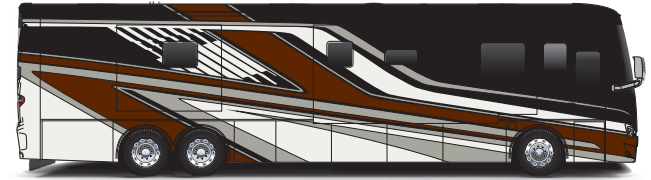


G11 WATERFALL



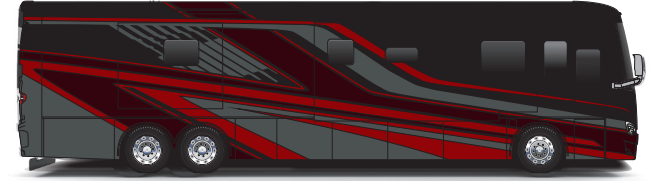
G11 WHITE MAHOGANY

GENERATION 12



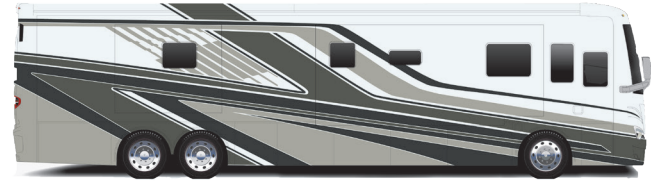
G12 CINDERWOOD

NEW



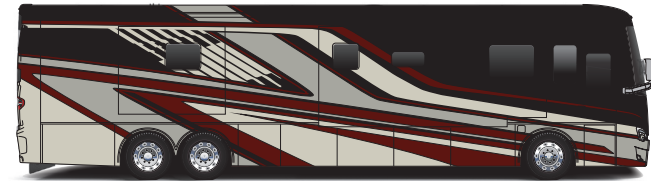
G12 FIRE OPAL

NEW



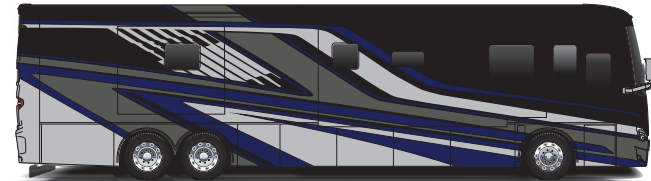
G12 FROSTED GRANITE

NEW



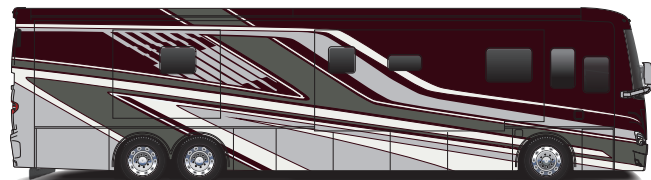
G12 SUNLIT SAND

NEW



G12 WATERFALL

NEW



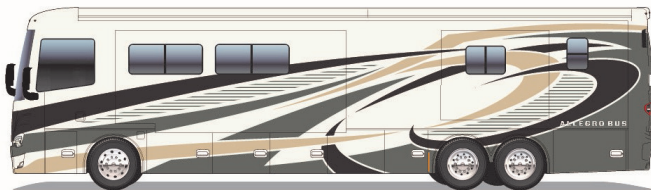
G12 WHITE MAHOGANY

NEW

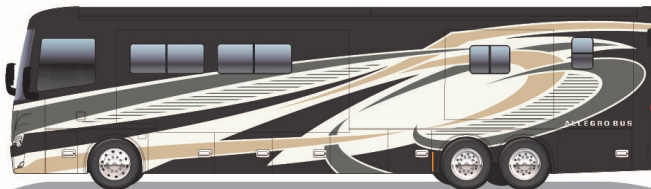


50TH ANNIVERSARY

NEW



LIGHT



DARK

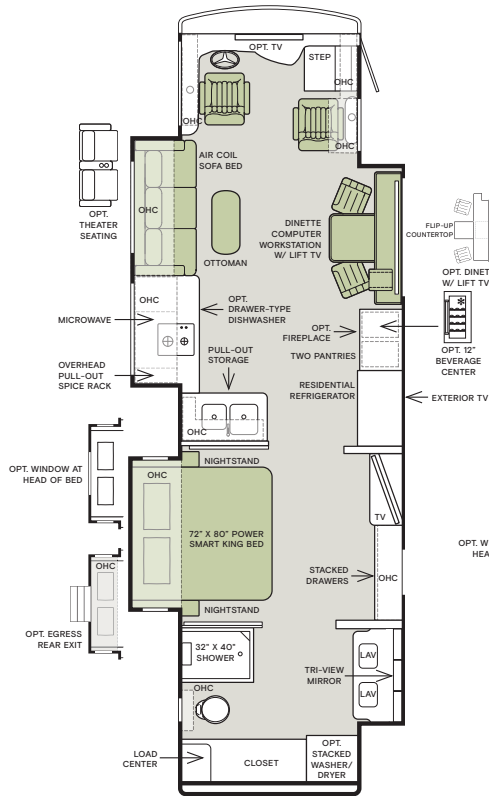
Images shown are representations of paint layouts and colors only and do not reflect all exterior features or options.

Floor Plans

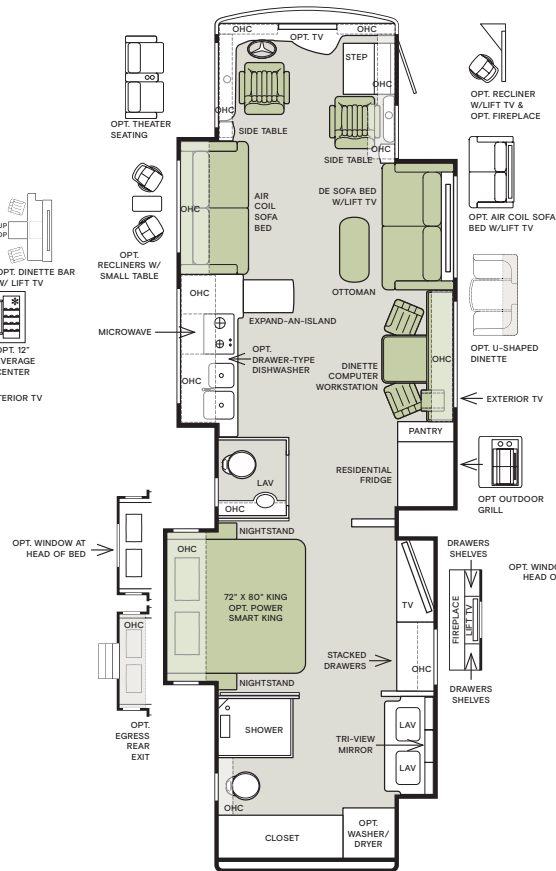


The design of every Allegro Bus floor plan must meet four essential criteria:
Maximum space, Optimal organization, Relaxation plus, and Elegant atmosphere.
Tiffin's MORE Plans offer your family the most comfortable layout for life on the road.

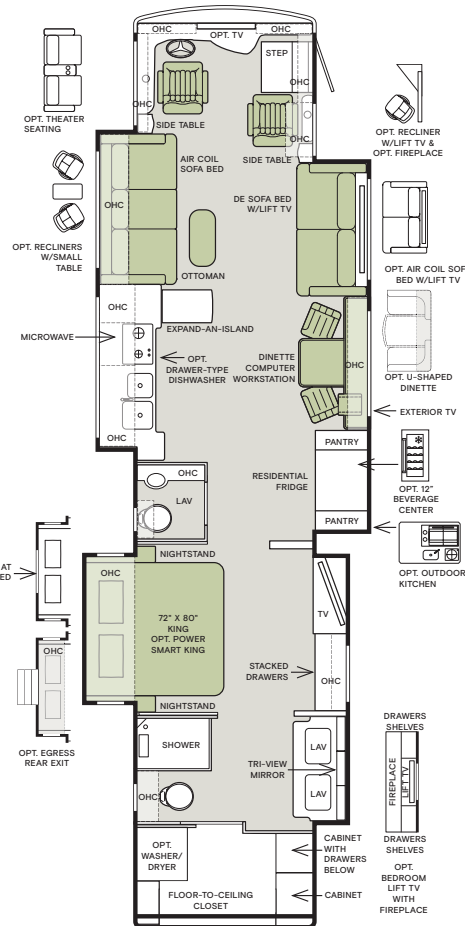
35 CP



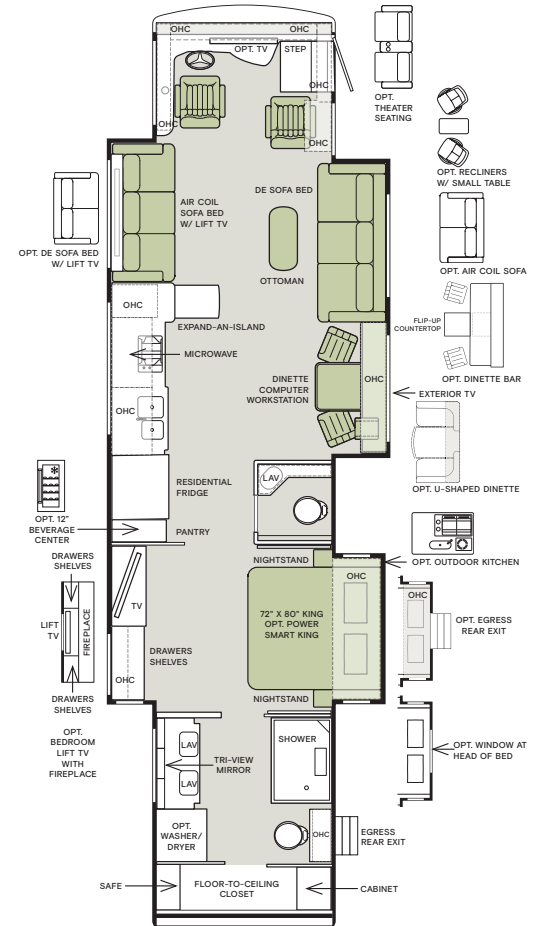
40 IP



45 OPP



45 FP



If optional furniture combinations are selected, window locations may vary from diagram shown.

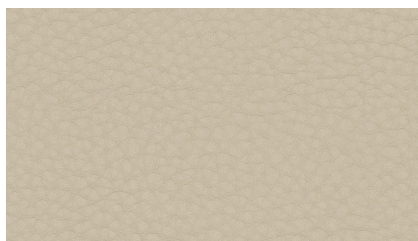
All options may not be available in every model. Because of progressive improvements and specifications, standard and optional equipment are subject to change without notice or obligation.

For a complete and up-to-date list of available options and specifications, visit tiffinmotorhomes.com.

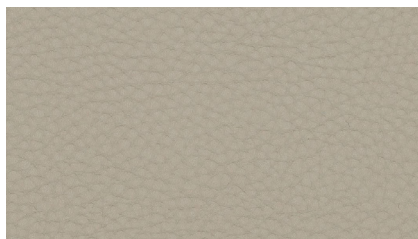
Interior Décor

Make your experience on the road all your own. Express yourself by choosing the interior appointments such as cabinet finishes, flooring, and décor ensembles for every part of your motorhome. In the 2023 Allegro Bus, you'll be able to travel in style no matter where you go.

ULTRALEATHER



TATAMI MAT



RICE PAPER

FLOORING



CATALINA ICE

GLOSSY FINISH TILE



CATALINA MAPLE

GLOSSY FINISH TILE

CABINETS



GLAZED HONEY NATURAL CHERRY



SHADOW



GLAZED CHERRY WOOD

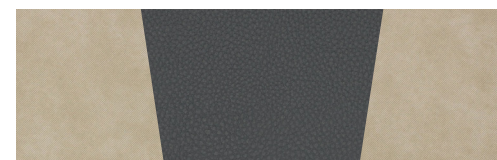


GLAZED CANYON CHERRY

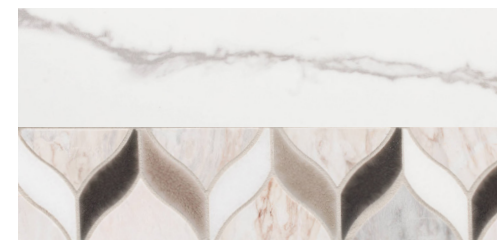


PURE LINEN

ART DECO II



WINDOW TREATMENT



BACKSPLASH



COUNTERTOP



LIVING ROOM



MASTER SUITE

Because of progressive improvements and specifications, standard and optional equipment are subject to change without notice or obligation. For a complete and up-to-date list of available options and specifications, visit tiffinmotorhomes.com.

FOX HOLLOW NEW



WINDOW TREATMENT



BACKSPLASH



COUNTERTOP

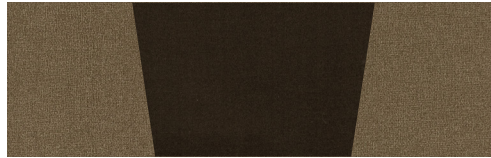


LIVING ROOM

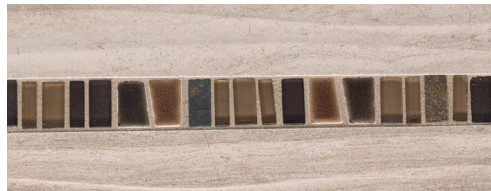


MASTER SUITE

LAGOS NEW



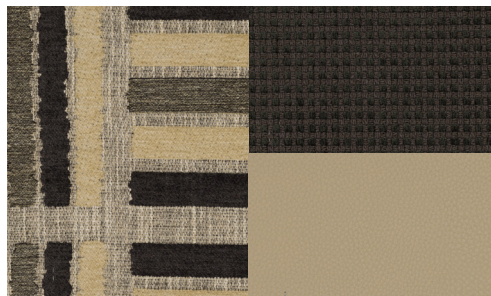
WINDOW TREATMENT



BACKSPLASH



COUNTERTOP



LIVING ROOM

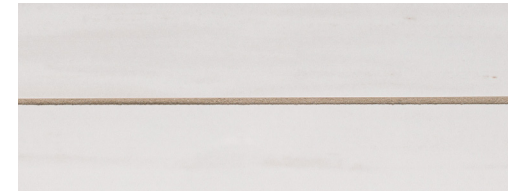


MASTER SUITE

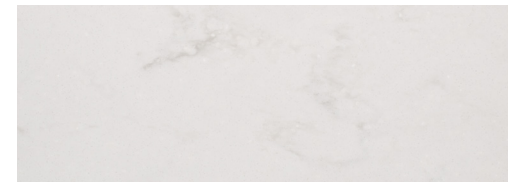
WAYPOINT NEW



WINDOW TREATMENT



BACKSPLASH



COUNTERTOP



LIVING ROOM



MASTER SUITE

Specifications, Features, and Options

KEY : S : Standard Feature | O : Optional Feature; Additional costs may apply | D : Dependent Feature; Feature is bundled with another optional feature | — : Not Available

WEIGHTS AND MEASURES	35 CP	40 IP	45 OPP		45 FP	
HORSEPOWER	450 HP (S)	450 HP (S)	450 HP (S)	605 HP (O)	450 HP (S)	605 HP (O)
DIMENSIONS						
Overall Length (approx.) ¹	37' 5"	41'	45'	45'	45'	45'
Overall Width ¹	101"	101"	101"	101"	101"	101"
Overall Height	13' 3"	13' 3"	13' 3"	13' 3"	13' 3"	13' 3"
Minimum Garage Height	14'	14'	14'	14'	14'	14'
Interior Height	83"	83"	83"	83"	83"	83"
Interior Width	96"	96"	96"	96"	96"	96"
Basement Storage (cubic feet, approx.)	180	229	257	237	257	237
Wheel Base	232"	276"	323"	316"	323"	316"
WEIGHT LIMITS						
GAWR-Front (pounds)	17,000	17,000	18,000	18,000	18,000	18,000
GAWR-Rear (pounds)	24,000	24,000	23,000	23,000	23,000	23,000
GAWR-Tag Axle (pounds)	—	—	13,300	13,000	13,300	13,000
GVWR (pounds)	41,000	41,000	51,000	51,000	51,000	51,000
Maximum Trailer Weight (pounds) ²	10,000	10,000	15,000	20,000	15,000	20,000
Hitch Rating (pounds)	10,000	10,000	15,000	20,000	15,000	20,000
GCWR (pounds)	51,000	51,000	66,000	71,000	66,000	71,000
CAPACITIES						
Fuel Tank (gallons)	150	150	150	150	150	150
DEF Tank (gallons) ³	10	10	10	15	10	15
Fresh Water (gallons)	100	100	100	100	100	100
Grey Water (gallons)	100	100	100	100	100	100
Black Water (gallons)	55	55	55	55	55	55

¹ The approximated coach width and length does not include side-view mirrors and rear ladders.
² Maximum trailer weight is dependent on the loading and towing variables which include the GVWR, GAWR, and GCWR, as well as adequate trailer brakes.
³ Diesel Exhaust Fluid (DEF) is the active component used in Selective Catalytic Reduction (SCR) engines to reduce nitrogen oxide emissions by 90% to meet EPA standards.

PLUMBING		
<ul style="list-style-type: none">Aqua View Showermiser™Water FilterWater Pump Switch Access from Spyder System and Sewer Bay BoardLow-point Water Drain LinesBlack Holding Tank Flush System	<ul style="list-style-type: none">Gravity Water FillHeated Water and Holding Tank CompartmentSeeLevel™ Tank MonitorCentralized Exterior Sewer Bay with Gravity Black and Grey Evacuation Ports	<ul style="list-style-type: none">Exterior Rinse Hose with Shower HeadSewer Bay Hand Sanitizer and Paper Towel HoldersSewer Hose StorageFresh Water Hose with Power Retract Reel

CHASSIS OPTIONS		35 CP	40 IP	45 OPP	45 FP
Water Heater	Aqua-Hot® 450D Heat Exchanger ¹	S	S	D	D
	Aqua-Hot® 600D Heat Exchanger ²	—	—	D	D

¹ Standard with 450 HP engine option. Not available with 605 HP option. Aqua-Hot® heat exchanger provides both heated air and water.
² Standard with 605 HP engine option. Not available with 450 HP option. Aqua-Hot® heat exchanger provides both heated air and water.

CHASSIS AND DRIVETRAIN					
<ul style="list-style-type: none">PowerGlide® Rear Engine Diesel ChassisAluminum WheelsFront and Rear 315/80 R22.5 TiresCombination Valid™ Air Leveling System with Hydraulic Leveling JacksAir Ride Suspension SystemIndependent Front SuspensionSide-mounted RadiatorFull Air Brake System with Automatic Slack AdjustersFront Disc Brakes and Rear Drum BrakesThree-stage Compression Brake¹ NEWAir Force One Tow Vehicle Brake SystemDual Fuel Fill CapableAutomatic Traction ControlAdaptive Cruise ControlCollision Mitigation with Forward Warning and Active BrakingElectronic Stability ControlTire Pressure Monitoring					
CHASSIS OPTIONS		35 CP	40 IP	45 OPP	45 FP
Engine	Cummins L9 450 HP/1,250 lb-ft Torque ²	S	S	S	S
	Cummins X15 605 HP/1,950 lb-ft Torque ³	—	—	O	O
Alternator	210-Amp Alternator ⁴	S	S	D	D
	280-Amp Alternator ⁵	—	—	D	D
Transmission	Allison® 3000 MH 6-speed Automatic Transmission with Lock-up Torque Converter ⁴	S	S	D	D
	Allison® 4000 MH 6-speed Automatic Transmission with Lock-up Torque Converter ⁵	—	—	D	D
Chassis Batteries	(2) 12-Volt Flooded Lead-Acid	S	S	D	D
	(3) 12-Volt Flooded Lead-Acid	—	—	D	D
Steerable Tag Axle		—	—	S	S
Service Brakes	Tag Axle Drum Brakes ⁴	—	—	D	D
	Tag Axle Disc Brakes ⁵	—	—	D	D

¹ Two-stage compression brake is no longer available.
² Peak horsepower achieved at 2,100 RPM. Peak torque achieved at 1,400 RPM.
³ Peak horsepower achieved at 1,800 RPM. Peak torque achieved at 1,150 RPM.
⁴ Standard with 450 HP engine option. Not available with 605 HP engine option.
⁵ Standard with 605 HP engine option. Not available with 450 HP engine option.

ELECTRICAL			
<ul style="list-style-type: none">• All-Electric Coach ¹• Spyder Multiplex System Featuring App Compatibility• 10.0-Kilowatt Onan® Quiet Diesel Generator• Generator Slide Tray• 2,800-Watt Pure Sine Wave Inverter with Auto-Gen Start and Interior Remote Control ²• Extraordinaire™ Air Conditioning System• (3) 15,000-BTU Roof Air Conditioners with Heat Pumps	<ul style="list-style-type: none">• 50-Amp Shore Power with Powered Retract Reel• In-motion Satellite Dish ³• Prewiring for Winegard® Trav'ler™ Satellite• Auxiliary Solar Port• Energy Management System• BluRay® Player• Satellite Receiver• Park Cable and Ground Satellite Hook-up• HD Over-the-air Antenna ⁴	<ul style="list-style-type: none">• Prep for Winegard® Connect™• 12-Volt Breaker Panel• 12-Volt Disconnect Switch• Rotary Disconnect Switches for House Batteries, Chassis Batteries, and Inverter• Ground Fault Circuit Interrupter (GFCI) Outlets at Galley, Lavatories, and Sewer Bay• 110-Volt Exterior Receptacle• Surge Guard® Transfer Switch• USB Receptacles Throughout Coach	

House Batteries	(6) 6-Volt Flooded Lead-Acid Batteries	S	S	S	S
	(6) 6-Volt Extended Cycle AGM Batteries	O	O	O	O
	(3) 12-Volt Lithium Batteries	O	O	O	O
Battery Slide-out Tray ⁵		D	D	D	D
Heat Sources	Aqua-Hot® 450D Heat Exchanger ⁶	S	S	D	D
	Aqua-Hot® 600D Heat Exchanger ⁷	—	—	D	D
Solar Panels	Prep for Solar Panels ⁸	S	S	S	S
	(3) Solar Panels	O	O	O	O
	(6) Solar Panels	—	O	O	O
Cellular Signal Booster NEW		O	O	O	O
Wi-Fi Booster UPDATED		O	O	O	O

¹ Space heating, water heating, and cooking appliances are electrically powered. All-electric coaches still require diesel for the engine and either shore power or a generator to operate air conditioning.
² Automatic generator start capabilities controlled through Spyder Controls Multiplex System.
³ High-definition programming is not available on a domed satellite antenna unless you subscribe to DISH Network®.
⁴ Requires subscription.
⁵ Standard with flooded and extended cycle AGM batteries. Not available with lithium batteries.
⁶ Standard with 450 HP engine option. Not available with 605 HP option. Aqua-Hot® heat exchanger provides both heated air and water.
⁷ Standard with 605 HP engine option. Not available with 450 HP option. Aqua-Hot® heat exchanger provides both heated air and water.
⁸ Includes docking ports for aftermarket solar panels.

Specifications, Features, and Options (Cont'd)

KEY : S : Standard Feature | O : Optional Feature; Additional costs may apply | D : Dependent Feature; Feature is bundled with another optional feature | — : Not Available

INTERIOR

- Handcrafted Cabinet Fascias and Doors with Concealed Hinges
- Interior Grab Handle at Entry Door
- (2) Flat-panel Televisions ¹
- Solid Surface Galley Countertop
- Soft Touch Vinyl Ceiling

- LED Lighting
- Carbon Monoxide Detector
- LPG Leak Detector
- Smoke Detector
- Fire Extinguisher

- Solar and Privacy Shades
- Powered Solar and Privacy Shades
- Soft-closing Drawer Slides
- Powered Roof Vents
- Central Vacuum System with VacPan® Automatic Dustpan

INTERIOR OPTIONS		35 CP	40 IP	45 OPP	45 FP
Fabric Suites ²	Waypoint <div>NEW</div>	O	O	O	O
	Lagos <div>NEW</div>	O	O	O	O
	Fox Hollow <div>NEW</div>	O	O	O	O
	Art Deco II	O	O	O	O
Ultraleathers ³	Tatami Mat <div>NEW</div>	O	O	O	O
	Rice Paper <div>NEW</div>	O	O	O	O
Cabinetry Stain	Glazed Canyon Cherry	O	O	O	O
	Glazed Cherry	O	O	O	O
	Glazed Honey Natural Cherry	O	O	O	O
	Pure Linen	O	O	O	O
	Shadow	O	O	O	O
Floor Tiles	Catalina Maple Glazed Porcelain Tile	O	O	O	O
	Catalina Ice Glazed Porcelain Tile	O	O	O	O
Slide-out Flooring	Treated Carpet in Slide-out Floors <div>NEW</div>	S	S	—	—
	Tile Slide-out Floors	—	—	S	S
Slide-out Fascia	Handcrafted Traditional Slide-out Fascia	S	S	S	S
	Handcrafted Contemporary Slide-out Fascia	O	O	O	O
Washer & Dryer	Prep for Washer and Dryer	S	S	S	S
	Stacked Washer and Dryer	O	O	O	O
Emergency Exits	Bathroom Egress Door	—	—	—	S
	Bedroom Egress Door ⁴	O	O	O	O
Gold Heat® Dual Zones Heated Tile Floor		O	O	O	O

¹ Located in living area and bedroom.
² Latte III, Chanel II and Tempest III are no longer available.
³ Silkworm and Grey Owl are no longer available.
⁴ Must be combined with overhead cabinet with headboard.

EXTERIOR

- Full-body Paint with (4) Layers of Clear Coat
- Seamless One-piece Gel-coat Fiberglass Molded Roof Cap
- One-piece Molded Gel-coat Fiberglass Front and Rear Caps
- Rust Protective Undercoating
- High Performance Protective Film on Front Cap and Select Areas
- Girard® Powered Door Awning with Integrated LED Lighting
- Girard® Slide-out Toppers
- Steel Basement Construction
- Side-Swinging Exterior Storage Doors with Gas Shocks

- Lockable Chrome Handles on Compartment Doors
- Motion-sensor Lights in Cargo Bay
- 120-Volt and 12-Volt Outlets Inside Cargo Bays
- Charcoal Carpet Cargo Walls
- Pass-through Basement Storage
- Flush, Dual-Pane Windows
- Daytime Running Lights
- Docking Lights
- Exterior Patio Light
- Fog Lights
- Exterior Ground Effects Lighting
- Chrome Power Heated Side-View Mirrors with Integrated Cameras
- Exterior TV with Soundbar

- Fast Charge USB ports within Exterior TV Compartment
- Deadbolt Front Entrance Lock
- Lighted Entry Door Grab Handle
- Automatic Stainless Steel Double Entry Step
- Keyless Entry System for Front Entrance and Component Doors
- Exterior Spyder System Control Panel
- Mud Flaps
- Custom Rock Guard
- Concealed Air Horn
- Striped Slide-out Endwalls
- Limited Edition 50th Anniversary Decal

EXTERIOR OPTIONS

Patio Awnings

(1) Girard® Roof-mounted Powered Patio Awning with Integrated LED Lighting and Dual Pitch Feature

(2) Girard® Roof-mounted Powered Patio Awnings with Integrated LED Lighting and Dual Pitch Feature

Window Awnings

Girard® Manual Window Awning Package

Girard® Powered Window Awning Package

Cargo Door Stainless Steel Rocker Trim

Slide Trays ¹

(1) Manual Storage Compartment Slide-out Tray

(2) Manual Storage Compartment Slide-out Trays

Pull-out Outdoor Electric Grill ²

Outdoor Kitchen with Electric Grill, Sink, and Single-burner Induction Cooktop ²

Basement Freezer

Exterior Lighting under Slide-out

Exterior Television

Manual Exterior TV Compartment Door

Powered Exterior TV Compartment Door

Lippert™ On-The-Go™ Telescoping Ladder ³

35 CP

40 IP

45 OPP

45 FP

NEW

NEW

¹ Trays slide out on both sides of motorhome. Not compatible with outdoor kitchen option.
² Includes an electric slide tray.
³ All units will ship with a Lippert™ On-The-Go™ Prepped Receiver installed.

Specifications, Features, and Options (Cont'd)

KEY : S : Standard Feature | O : Optional Feature; Additional costs may apply | D : Dependent Feature; Feature is bundled with another optional feature | — : Not Available

DRIVER'S COMPARTMENT

- Ultraleather Power Driver and Passenger Seats
 - Integrated Seat Belts on Driver and Passenger Seats
 - Lumbar Support on Driver and Passenger Seats
 - Powered Passenger Seat Footrest
 - Tilt and Telescoping Steering Wheel with Integrated Controls
 - Adjustable Accelerator and Brake Pedals
 - Backlit Dash Switches
 - Storage Drawer in Dash
 - Dual Dash Fans
 - 12-Volt Dash Receptacle
 - USB Dash Receptacles
 - Valid™ LCD Instrument Cluster Display with Integrated Leveling Controls
- Contemporary Dash
 - Cupholders on Driver and Passenger Side
 - Built-in Driver and Passenger Consoles
 - Passenger Side Spyder System Control Panel
 - Passenger Side Phone Charging Station
 - Driver and Passenger Map Lights
 - One-piece Panoramic Windshield
 - Single-motor Intermittent Windshield Wipers
 - Automatic LED Headlights
 - Side-view Cameras ¹
 - Color Back-up Camera Monitor
 - Blind Spot Monitoring System
 - Stereo with AM & FM Radio, CD Player, and Satellite Radio ²
- Ceiling Mounted Speakers
 - In-dash Navigation System
 - Auxiliary Start Switch
 - Driver's Compartment Overhead Cabinets with Wooden Panel Doors
 - Powered Opening Driver Side Window
 - Solid, Non-opening Passenger Side Window
 - Powered Solar and Privacy Windshield Shade
 - Powered Solar and Privacy Shades on Side Windows
 - Solid Surface Step Well
 - Powered Step Well Cover
 - Storage Compartment Within Entry Steps
 - Recessed Lighting Within Step Well

DRIVER'S COMPARTMENT OPTIONS	35 CP	40 IP	45 OPP	45 FP
360° View Camera ³	O	O	O	O
Advanced Monitor System ⁴	O	O	O	O
JBL® Sound System	O	O	O	O
Front Overhead TV	O	O	O	O

¹ Integrated within side-view mirrors and activated by turn signals.

² Subscription required for satellite radio.

³ Requires JBL® Sound System and Advanced Monitor System options.

⁴ Includes (2) 10" monitors, (1) 7" passenger monitor, media center, AM & FM Radio, Satellite Radio (subscription required), and RV GPS. Requires JBL® Sound System.

DINETTE AND LIVING AREA		35 CP	40 IP	45 OPP	45 FP
Driver Side Furniture	Ultraleather Air Coil Sofa ¹	S	S	S	—
	Theater Seating	O	O	O	—
	(2) Ultraleather Recliners	—	O	O	—
	Ultraleather Air Coil Sofa with Lift TV ¹	—	—	—	S
	Ultraleather DE Sofa with Lift TV ²	—	—	—	O
Passenger Side Dinette	Ottoman with Internal Storage ³	D	D	D	D
	Dinette Computer Workstation with TV Lift ⁴ <div>UPDATED</div>	S	—	—	—
	Dinette Bar with Lift TV	O	—	—	—
	Dinette Computer Workstation ⁴ <div>UPDATED</div>	—	S	S	S
	Ultraleather U-shaped Dinette	—	O	O	O
	Dinette Bar	—	—	—	O
	Overhead Dinette Cabinets	—	S	S	S
Passenger Side Furniture	Ultraleather DE Sofa Bed with Lift TV ²	—	S	S	—
	Ultraleather Air Coil Sofa Bed with Lift TV ¹	—	O	O	—
	Ultraleather Recliner and Lift TV with Fireplace	—	O	O	—
	Ultraleather Recliner and Lift TV	—	O	—	—
	Ultraleather DE Sofa Bed ²	—	—	—	S
	(2) Ultraleather Recliners	—	—	—	O
	Theater Seating	—	—	—	O
	Ultraleather Air Coil Sofa Bed ¹	—	—	—	O
	Fireplace ⁵	O	—	—	—

¹ Piece of furniture sleeps two comfortably.

² Piece of furniture sleeps one comfortably.

³ Standard unless theater seating option is chosen.

⁴ Printer bump-out no longer available.

⁵ Not compatible with beverage center on 35 CP.

KITCHEN

- Stainless Steel Residential Refrigerator
 - Stainless Steel Convection Microwave with Exterior Venting
 - Double Bowl Kitchen Sink with Single Lever Faucet and Pull-down Sprayer
- Built-in Soap Dispenser
 - Galley Overhead with Pull-out Drawers
 - Panoramic Galley Window
 - LED Countertop Lighting
- Full Tile Backsplash
 - Solid Surface Galley Countertop, Sink, and Cooktop Cover
 - Pull-out Utility Box Located Under Sink

KITCHEN OPTIONS		35 CP	40 IP	45 OPP	45 FP
Decorative Wooden Refrigerator Panel		O	O	O	O
Cooking Appliances	Two-Burner Induction Cooktop	S	S	S	S
	Wolf® Induction Cooktop	O	O	O	O
InSinkErator® Instant Hot Water Faucet		O	O	O	O
Drawer-style Dishwasher		O	O	O	O
12" Beverage Center ¹		O	—	O	O
Expand-An-Island		—	S	S	S

¹ Not compatible with fireplace on 35 CP.

BATHROOM

- (2) Porcelain Master Bathroom Sinks
 - Solid Suface Lavatory Top
 - Solid Surface Shower Walls with Inlaid Tile and Residential Glass Door
- Shower Head with Detachable Hand-held Shower Wand
 - Shower Skylight
 - Shower LED Light with Sliding Cover
- Towel and Toilet Paper Holders
 - Medicine Cabinet with Tri-view Vanity Mirror
 - Roof Vent Fan

BATHROOM OPTIONS		35 CP	40 IP	45 OPP	45 FP
Number of Bathrooms	(1) Bathroom	S	—	—	—
	(1) Bathroom and (1) Half-bath ¹	—	S	S	S
Toilet	(1) Macerator Toilet	S	—	—	—
	(2) Macerator Toilets	—	S	S	S
Pure Linen Master Bath Cabinets ²		O	O	O	O

¹ All half-baths contain a toilet and a solid surface countertop with a single porcelain sink.

² Replaces the chosen cabinetry stain used throughout the coach with Pure Linen for the master bathroom.

BEDROOM

- Bedside Windows
 - Bed Comforter with Throw Pillows
 - Strategically-placed, Handcrafted Privacy Door
- Nightstand with Solid Surface Tops
 - Centralized Entertainment Center ¹
 - Ceiling Fan
- Decorative Handcrafted Wood Ceiling Ring
 - Safe

BEDROOM OPTIONS		35 CP	40 IP	45 OPP	45 FP
Mattress	Memory Foam King Mattress (72" x 80")	—	S	S	S
	Power Smart King Bed (72" x 80")	S	O	O	O
Bed Slide	Overhead Cabinet with Headboard	S	S	S	S
	Window at Head of Bed ²	O	O	O	O
Under Bed Storage ³		—	D	D	D
Bedroom TV	Mounted Flat-panel TV	S	S	S	S
	Bedroom Lift TV with Fireplace	—	O	O	O
Bedroom Storage	Floor-to-ceiling Closet Space	S	S	—	S
	Walk-in Closet	—	—	S	—
	Solid Surface Countertops within Storage Spaces	—	—	S	S
Laundry Hamper		S	S	—	S

¹ Houses BluRay® player, satellite reciever, and cable TV hook-up.

² Window option removes overhead cabinets.

³ Not available when optioned with Power Smart King Bed.

Because of progressive improvements and specifications, standard and optional equipment are subject to change without notice or obligation. For a complete and up-to-date list of available options and specifications, visit tiffnmmotorhomes.com.



Reflecting over four decades of innovation, Tiffin's proprietary PowerGlide Chassis demonstrates our ongoing commitment to delivering a motorhome experience that's precisely engineered for durability, reliability, performance, and control wherever your journey takes you.

MULTIPLEX WIRING WITH DIAGNOSTICS

The PowerGlide's multiplexed electrical system, with auto-reset fuses and relays, uses less wiring and increases reliability, efficiency, and flexibility.

DYNAMOMETER TESTING

The PowerGlide's dynamometer testing simulates full power road testing, enabling us to better assess engine performance, cooling system function, and instrumentation.

POWERGLIDE CHASSIS WARRANTY

The PowerGlide carries a Tiffin-backed limited warranty for three years or 50,000 miles against defects in materials and workmanship.

HUCK-BOLTED CONSTRUCTION

The PowerGlide's Huck Bolts are precision engineered two-piece fasteners. Huck Bolts are vibration resistant and provide direct metal to metal contact when installed.

For all information concerning the PowerGlide limited warranty provided by Tiffin, please refer to the full, written limited warranty set forth on the Tiffin website or held by our authorized dealerships. For a complete and up-to-date list of available options and specifications, visit tiffinmotorhomes.com.

1

YEAR OR 12,000 MILES
LIMITED WARRANTY

5

YEARS OR 50,000 MILES
DELAMINATION
LIMITED WARRANTY

10

YEARS OR 50,000 MILES
CONSTRUCTION
LIMITED WARRANTY

1

YEAR COACH
ROADSIDE SERVICE

∞

ONGOING
CUSTOMER SUPPORT

FOR PARTS & SERVICE CALL 256.356.0261 OR VISIT TIFFINMOTORHOMES.COM

105 2ND ST NW RED BAY, AL 35582 [f](#) [i](#)



TIFFIN

MOTORHOMES

©2021 Tiffin Motorhomes, Inc. Allegro®, Allegro Breeze®, Allegro RED®, Phaeton®, Allegro Bus®, Zephyr®, Wayfarer®, Roughing It Smoothly®, Open Road®, PowerGlide®, Pusher® and Cahaba® are registered trademarks of Tiffin Motorhomes, Inc. All rights reserved.
For all information concerning the limited warranty provided by Tiffin, please refer to the full written limited warranty set forth on the Tiffin website or held by our authorized dealerships. Please note, some interior furnishings not included.