

CLASS-C

WAYFARER

MODEL YEAR 2023 | PRODUCT UPDATES

Initial MY2023 Model Change Plans, Subject to Change in Full Production

Date Revised: 9/9/22

TIFFIN

20
23

What's New Summary – Wayfarer

WHAT'S NEW

- | | | |
|---|--|--|
| • Generation 5 Paint Schemes | • Closet Pull Out on 25 LW | • 30-gallon Fresh Tank Capacity on 25 RW & 25 JW |
| • Sea Mist and 50th Anniversary Exterior Paint Color Packages | • Flush Mounted Valances | • Entry Lights on Driver and Passenger Sides |
| • Maple Cabinetry Now Available | • Ports for DVD Player and Other Devices | • All-electric Coach Option |
| • 50th Anniversary Decal | • Blackout, Snap Cab Curtains for Bunk | • More Convenient Microwave Location on 25 RW |
| • Night and Day Shades | • Chrome Hardware Standard | • SmartPlug® Detachable 30-Amp Shore Power Cord |
| • Redesigned Galley | • Redesigned Sewer Bay | |

NO LONGER AVAILABLE

- | | | |
|------------------------------|--|---|
| • 25 SW Floorplan | • Sterling Fabric Suite | • Acier Gray/Chateau and Russet Cabinetry |
| • Generation 3 Paint Schemes | • Harmony Exterior Paint Color Package | • Blu-Ray Player |

Premium Paint System

Our eight-step, full-body paint system features premium grade paints sealed with three layers of clear coat with ultraviolet protection. An additional layer of high-performance film protects the front of the coach and select areas.

Initial MY2023 Model Change Plans, Subject to Change in Full Production

Images shown are representations of paint layouts and colors only and do not reflect all exterior features or options.



50TH ANNIVERSARY

NEW

Generation 4 Paint Schemes



G4 SILVER SAND



G4 SAND DRIFT



G4 SEA MIST

NEW



G4 OBSIDIAN

Generation 5 Paint Schemes



G5 SILVER SAND

NEW



G5 SAND DRIFT

NEW



G5 SEA MIST

NEW



G5 OBSIDIAN

NEW

Optional Floor Plans



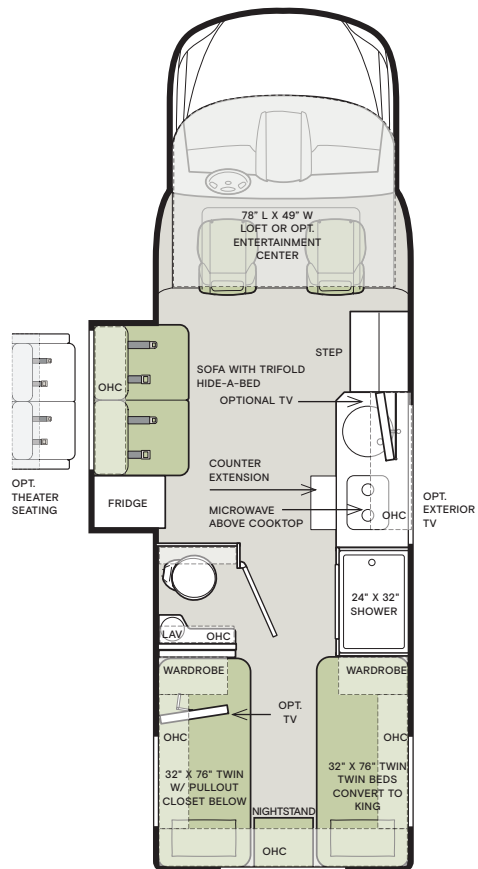
The design of every Wayfarer floor plan must meet four essential criteria: Maximum space, Optimal organization, Relaxation plus, and Elegant atmosphere. Tiffin's MORE Plans offer your family the most comfortable layout for life on the road.

If optional furniture combinations are selected, window locations may vary from diagram shown.

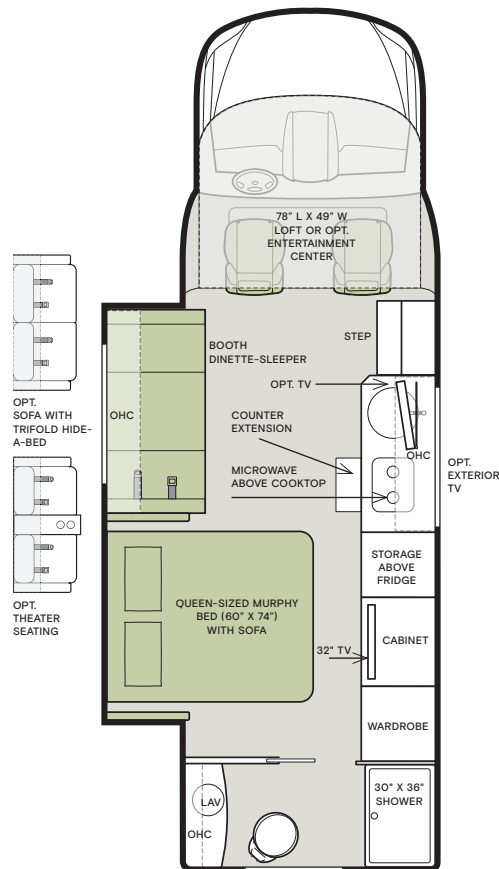
All options may not be available in every model. Because of progressive improvements and specifications, standard and optional equipment are subject to change without notice or obligation.

For a complete and up-to-date list of available options and specifications, visit tiffinmotorhomes.com.

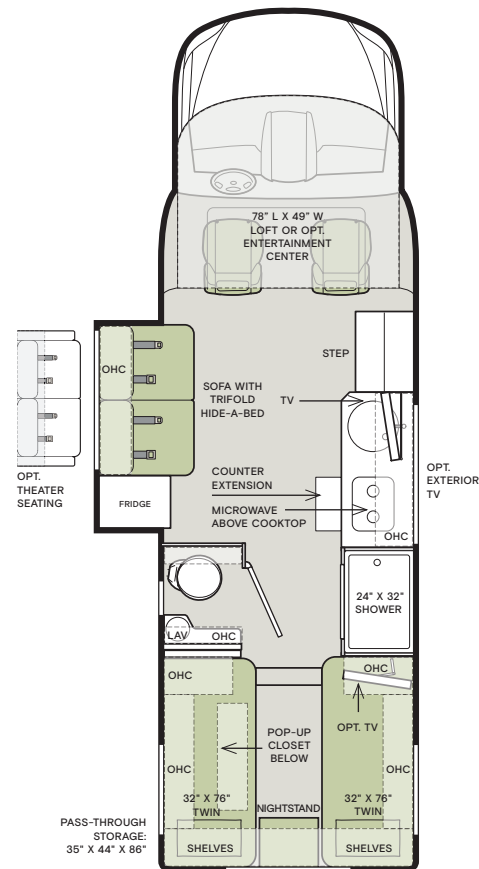
25 TW



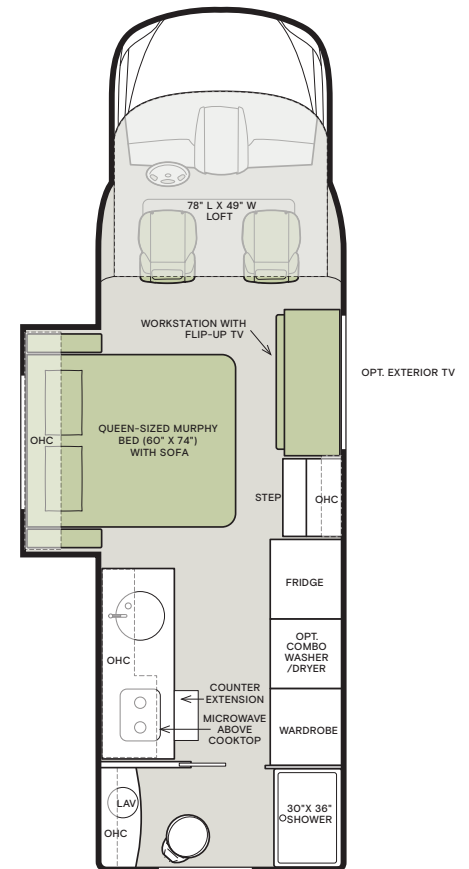
25 RW



25 LW



25 JW



NO LONGER AVAILABLE

• 25 SW Floor Plan

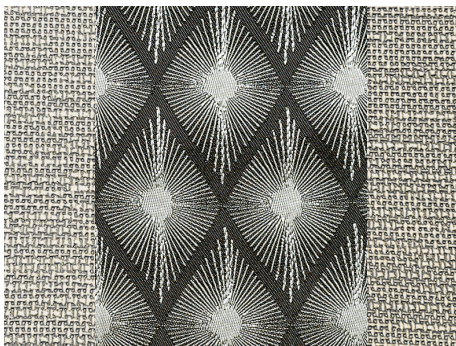
Interior Décor

Make it all yours. Personalize your décor experience with the Wayfarer’s customization options. The Wayfarer’s luxury design options allow you to arrive and live in style, wherever your travels and adventures take you.

MINK



BEDROOM



WINDOW TREATMENT



COUNTERTOP



FURNITURE

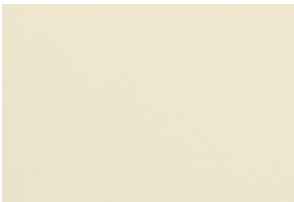


FLOORING

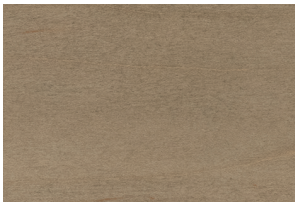


WALLCOVERING

CABINETS



LINEN



SANDSTONE



SHADOW

CHAMPAGNE



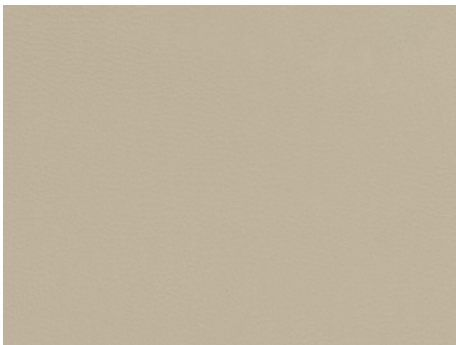
BEDROOM



WINDOW TREATMENT



COUNTERTOP



FURNITURE



FLOORING



WALLCOVERING

Specifications, Features, and Options

KEY : S : Standard Feature | O : Optional Feature; Additional costs may apply | D : Dependent Feature; Feature is bundled with another optional feature | — : Not Available

WEIGHTS AND MEASURES	25 TW	25 RW	25 LW	25 JW
DIMENSIONS				
Overall Length (approx.) ¹	25' 8"	25' 8"	25' 8"	25' 8"
Overall Width ¹	90"	90"	90"	90"
Overall Height	11' 4"	11' 4"	11' 4"	11' 4"
Interior Height	80"	80"	80"	80"
Interior Width	87"	87"	87"	87"
Basement Storage (cubic feet, approx.)	68	37	130	54
Wheel Base	170.3"	170.3"	170.3"	170.3"
WEIGHT LIMITS				
GAWR-Front (pounds)	4,410	4,410	4,410	4,410
GAWR-Rear (pounds)	7,720	7,720	7,720	7,720
GVWR (pounds)	11,030	11,030	11,030	11,030
Hitch Rating (pounds) ²	5,000	5,000	5,000	5,000
GCWR (pounds)	15,250	15,250	15,250	15,250
CAPACITIES				
Fuel Tank (gallons)	24.5	24.5	24.5	24.5
DEF Tank (gallons) ³	4.8	4.8	4.8	4.8
Fresh Water (gallons)	38	28	32	28
Grey Water (gallons)	32	36	32	33
Black Water (gallons)	28	28	28	28
LPG Tank (gallons)	12	12	12	12

¹ The approximated coach width and length does not include side-view mirrors.

² Tow ratings and ability are subject to gross combined weight ratings on the tow vehicle. Hitch rated at 500 pound vertical tongue weight and includes 7-pin connector.

³ Diesel Exhaust Fluid (DEF) is the active component used in Selective Catalytic Reduction (SCR) engines to reduce nitrogen oxide emissions by 90% to meet EPA standards.

CHASSIS AND DRIVETRAIN		
<ul style="list-style-type: none">Mercedes-Benz® 3500XD Dual Wheel Cutaway ChassisTwo-wheel DriveMercedes-Benz® 3.0-Liter V6 Turbo 188 HP Diesel Engine with 325 lb-ft Torque220-Amp AlternatorMercedes-Benz® 7G-Tronic Automatic TransmissionAluminum Wheels	<ul style="list-style-type: none">Front and Rear LT 215/85 R16 Tires(1) 12-Volt Flooded Lead-Acid Chassis BatteriesBigFoot® Hydraulic Leveling SystemSumoSprings® Ride Assist SystemFront RadiatorFour Wheel ABS BrakesManual Parking BrakeActive Brake Assist (Collision Mitigation)	<ul style="list-style-type: none">Active Distance Assist Distronic (Adaptive Cruise Control)Attention AssistTraffic Sign AssistLoad Adaptive Electronic Stability Program (ESP)High Beam AssistActive Lane Keeping Assist

DRIVER'S COMPARTMENT		
<ul style="list-style-type: none">Adjustable Driver and Passenger SeatsHeated Driver and Passenger SeatsSwivel Bases for Driver and Passenger SeatsLeather Wrapped Steering Wheel with Integrated ControlsKeyless StartInstrument Cluster with Color DisplayTray for Smartphones with Charging Ports	<ul style="list-style-type: none">Windshield with Filter BandRain Sensor for Windshield WipersAutomatic LED HeadlightsEmergency Call SystemSmartphone Integration For Apple Carplay® and Android™ AutoMercedes-Benz® MBUX Multimedia System with 10.25" TouchscreenCeiling Mounted Speakers	<ul style="list-style-type: none">Intelligent NavigationAuxiliary Start SwitchPowered WindowsDoor-mounted Driver and Passenger Assist HandlesPowered Door LocksVinyl Floor CoveringPrivacy Curtain

DRIVER'S COMPARTMENT OPTIONS		25 TW	25 RW	25 LW	25 JW
Side-view Cameras		O	O	O	O
Overhead Features	Front Overhead Bunk with Privacy Curtains ¹	S	S	S	S
	Overhead Entertainment Center ²	O	O	O	—

¹ Now includes new blackout snap curtains for bunk.

² Replaces front TV over galley.

ELECTRICAL					
<ul style="list-style-type: none">• 3.2-Kilowatt Diesel Generator• 2,000-Watt Pure Sine Wave Inverter• Spyder Controls Multiplex System• (1) 15,000-BTU Air Conditioner• Wall-mounted Thermostat with Built-in Temperature Sensor• SmartPlug® Detachable 30-Amp Shore Power Cord• Prep for Satellite• Prep for Solar Panels¹	<ul style="list-style-type: none">• HD Over-the-air Antenna• Park Cable and Ground Satellite Hook-up• HDMI Ports• Mercedes-Benz® Wireless Internet Access• 12-Volt Breaker Panel• 12-Volt Disconnect Switch• Strategically-placed 110-Volt Outlets	<ul style="list-style-type: none">• Inverted Outlets for CPAP Machine in Bedroom• Ground Fault Circuit Interrupter (GFCI) Outlets at Galley, Lavatories, and Sewer Bay• 110-Volt Exterior Receptacle• Surge Guard® Transfer Switch• USB Receptacles Throughout Coach• 30-Amp, 110-Volt House Service• 12-Volt Engineered Wiring Harnesses			
ELECTRICAL OPTIONS		25 TW	25 RW	25 LW	25 JW
Heating and Cooktop Power Source	Liquid Propane (LP) Coach ²	S	S	S	S
	All-Electric Coach ³	O	O	O	O
House Batteries	(2) 12-Volt Flooded Lead-Acid House Batteries	S	S	S	S
	(1) 12-Volt Lithium House Battery	O	O	O	O
Heat Sources	(1) 30,000-BTU Ducted Furnace ⁴	D	D	D	D
	Elwell Timberline Hydronic Heating System ⁵	D	D	D	D
In-motion Satellite Dish		S	S	S	S
(1) Solar Panel		O	O	O	O
Cellular Signal Booster		O	O	O	O
Wi-Fi Booster		O	O	O	O

¹ Includes a docking port for an aftermarket solar panel.

² Propane is used to power the ducted furnaces, the water heater, and the liquid propane cooktop.

³ Removes liquid propane tank, furnace, and water heater. Option must be combined with 12-Volt Refrigerator. Includes Elwell Hydronic Heating System. All-electric coaches still require diesel for the engine and either shore power or a generator to operate air conditioning.

⁴ Only available with LP coach option.

⁵ Replaces ducted furnaces when all-electric coach option is selected. Elwell Timberline Hydronic Heating System provides both heated air and water.

PLUMBING		
<ul style="list-style-type: none">Water Heater Bypass SystemAqua View Showermiser™Water FilterWater PumpLow-point Water Drain Lines	<ul style="list-style-type: none">Black Holding Tank Flush SystemGravity Water FillHeated Water and Holding Tank CompartmentTank Level Monitor System	<ul style="list-style-type: none">Fresh Water Hookup for City Water and Tank FillCentralized Exterior Sewer Bay with Gravity Black and Grey Evacuation PortsExterior Rinse Hose with Shower HeadSewer Hose Storage

ELECTRICAL OPTIONS		25 TW	25 RW	25 LW	25 JW
Water Heater	Truma AquaGo™ Comfort Plus Instant Water Heater ¹	D	D	D	D
	Elwell Timberline Hydronic Heating System ²	D	D	D	D

¹ Standard with LP coach option.

² Replaces Truma AquaGo™ Comfort Plus instant water heater when all-electric coach option is selected. Elwell Timberline hydronic heating system provides both heated air and water.

Specifications, Features, and Options (Cont'd)

KEY : S : Standard Feature | O : Optional Feature; Additional costs may apply | D : Dependent Feature; Feature is bundled with another optional feature | — : Not Available

EXTERIOR

- Full-body Paint with (3) Layers of Clear Coat
 - Seamless One-piece Gel-coat Fiberglass Molded Roof Cap
 - One-piece Molded Gel-coat Fiberglass Front and Rear Caps
 - High Performance Protective Film on Front Cap, Front Cab, and Other Select Areas
- (1) Girard® Side-mounted Powered Patio Awning with Integrated LED Lighting and Built-in Speakers
 - Lockable Handles on Compartment Doors
 - Motion-sensor Lights in Cargo Bay
 - Flush-Style Tinted Windows with Tip-out Feature
 - Exterior Patio Light
- Fog Lights
 - Driver and Passenger Side Front Cap Exterior Entry Light
 - Heated, Electrically Adjustable Side-view Mirrors
 - Entry Door Grab Handle
 - Mud Flaps
 - Limited Edition 50th Anniversary Decal
- NEW

EXTERIOR OPTIONS	25 TW	25 RW	25 LW	25 JW
Exterior TV	O	O	O	O

INTERIOR

- Solid Surface Galley Countertop
 - Handcrafted Slide-out Fascia
 - Soft Touch Vinyl Ceiling
 - Accent Lighting in Lounge, Galley, and Bedroom
 - LED Lighting
- Carbon Monoxide Detector
 - LPG Leak Detector
 - Smoke Detector
 - Fire Extinguisher
 - Solar and Privacy Shades
 - Soft-closing Drawer Slides
- Powered Roof Vents
 - Central Vacuum System
 - Interior Grab Handle at Entry Door
 - Stereo System with Separate Speaker Zones
 - (2) Captain's Chair Lounge Cushions

INTERIOR OPTIONS		25 TW	25 RW	25 LW	25 JW
Treated Fabric Suites ¹	Mink	O	O	O	O
	Champagne	O	O	O	O
Ultraleathers	Etna Linen ²	D	D	D	D
	Seaport Bamboo ³	D	D	D	D
Cabinetry Stain	Sandstone ⁴	O	O	O	O
	Shadow ⁴ <div>NEW</div>	O	O	O	O
Television	(1) Flat-panel Television	D	D	D	S
	(2) Flat-panel Televisions	D	D	D	—
Washer & Dryer	Prep for Washer and Dryer	—	—	—	S
	Combo Washer-Dryer	—	—	—	O

¹ Sterling and Oasis are no longer be available.

² Only available with Champagne treated fabric suite option.

³ Only available with Mink treated fabric suite option.

⁴ Russett and Acier Gray/Chateau are no longer available.

DINETTE AND LIVING AREA		25 TW	25 RW	25 LW	25 JW
Driver Side Dinette	Booth Dinette-Sleeper ¹	—	S	—	—
Driver Side Furniture	Queen-sized Murphy Bed (60" x 74") with Sofa ¹	—	S	—	S
	Leatherette Sofa with Trifold Hide-a-bed ¹	S	O	S	—
	Theater Seating	O	O	O	—
Passenger Side Furniture	Mounted Flat-panel TV ²	S	O	S	—
	Workstation with Flip-up TV	—	—	—	S

¹ Piece of furniture sleeps one comfortably.

² Not available when overhead entertainment system is optioned.

KITCHEN

- Stainless Steel Convection Microwave with Exterior Venting
- Stainless Steel Single Bowl Sink and Faucet with Built-in Sprayer
 - Galley Overhead Cabinets
- Sliding Countertop Extension
 - LED Countertop Lighting
 - Solid Surface Galley Countertop

KITCHEN OPTIONS		25 TW	25 RW	25 LW	25 JW
Refrigerator	12-Volt, 5-Cubic Foot Refrigerator ¹	S	—	S	—
	Gas-Electric, 5-Cubic Foot Refrigerator ²	O	—	O	—
	12-Volt, 6.5-Cubic Foot Refrigerator ¹	—	S	—	S
	Gas-Electric, 6.5-Cubic Foot Refrigerator ²	—	O	—	O
Cooking Appliances <div>UPDATED</div>	Liquid Propane Cooktop with Built-in Cover ³	D	D	D	D
	One-Burner Induction Cooktop ⁴	D	D	D	D

¹ Required with all-electric coach option.

² Not available with all-electric coach option.

³ Cooktop and sink have swapped places on galley for 2023. Only available with LP coach option. Not available with all-electric coach option.

⁴ Cooktop and sink have swapped places on galley for 2023. Replaces liquid propane cooktop when all-electric coach option is selected.

BEDROOM

- LED Reading Lights
- Overhead Cabinets
- Wardrobe

BEDROOM FEATURES AND OPTIONS		25 TW	25 RW	25 LW	25 JW
Mattress	(2) Twin Mattresses (32" x 76") with Capability to Convert into King Bed (86" x 76")	S	—	S	—
	Queen-sized Murphy Bed (60" x 74") with Sofa	—	S	—	S
Under Bed Storage		S	—	S	—
Strategically-placed Privacy Curtain		—	O	—	—
Mounted Flat-panel TV		O	S	O	—
Bedroom Storage	Pop-up Closet Storage	—	—	S	—
	Closet Pull-out <div>NEW</div>	—	—	S	—

BATHROOM

- Porcelain Vessel Sink with Chrome Faucet
 - Handheld Shower Head
- Shower Skylight
 - Towel and Toilet Paper Holders
 - Roof Vent Fan
- LED Lighted Mirror
 - Base Cabinet

BATHROOM FEATURES AND OPTIONS		25 TW	25 RW	25 LW	25 JW
Shower	One-piece Fiberglass Shower (30" x 36")	S	—	S	—
	One-piece Fiberglass Shower (24" x 32")	—	S	—	S

1

YEAR OR 12,000 MILES
LIMITED WARRANTY

3

YEARS PAINT
DELAMINATION
LIMITED WARRANTY

5

YEARS OR 100,000 MILES
CHASSIS POWERTRAIN
LIMITED WARRANTY

3

YEARS OR 36,000 MILES
MERCEDES-BENZ CHASSIS
LIMITED WARRANTY

1

YEAR COACH
ROADSIDE SERVICES



TIFFIN
MOTORHOMES

FOR PARTS & SERVICE CALL 256.356.0261 OR VISIT TIFFINMOTORHOMES.COM | 105 2ND ST NW RED BAY, AL 35582  

©2021 Tiffin Motorhomes, Inc. Allegro®, Allegro Breeze®, Allegro RED®, Phaeton®, Allegro Bus®, Zephyr®, Wayfarer®, Roughing It Smoothly®, Open Road®, PowerGlide®, Pusher® and Cahaba® are registered trademarks of Tiffin Motorhomes, Inc. All rights reserved.
For all information concerning the limited warranty provided by Tiffin, please refer to the full written limited warranty set forth on the Tiffin website or held by our authorized dealerships. Please note, some interior furnishings not included.