

CLASS-A

# PHAETON

**MODEL YEAR 2023** | PRODUCT UPDATES

Initial MY2023 Model Change Plans, Subject to Change in Full Production

Date Revised: 9/9/22

**TIFFIN**

20  
23



## What's New Summary – Phaeton

### WHAT'S NEW

---

- |   |  |  |
|---|--|--|
| • Three New Fabric Suites (Morocco, Oceanside, & Capri) | • 50th Anniversary Decal   | • Updated Dinette Boothe Seating for Lift Up Seat Storage Access |
| • Two new Ultraleather Colors (Trail & Taupe Hills)     | • Slide Trays for AGM Batteries  | • New 14.5 Lippert™ On-The-Go™ Ladder                            |
| • Two New Tile Options (Natural and Contessaora Tile)   | • New Accent Panel on 40 IH Galley Wall  | • New Style Pantry with Drawers                                  |
| • Generation 11 Paint Schemes                           | • Centralized Entertainment Center Now Located Behind Bedroom TV on 37 BH                              | • Updated Pantry   |
| • Foot Ledge in Shower on 36 SH & 37 BH                 | • Lithium Battery Now Optional   | • Updated Dinette Computer Workstation Option                    |
| • New Wi-Fi Booster                                     | • Updated Tank Monitoring System   | • Chrome Faucet Now Available                                    |
| • Cellular Signal Booster Now Available                 | • Updated Furniture Styling  | • Hydraulic Bed Slides Now on 37BH, 40IH, and 44OH               |
| • 50th Anniversary Paint Scheme Color Packages          | • Truma AquaGo™ Comfort Instant Water Heater Now Controllable Through the Spyder System Control Panels |  |

### NO LONGER AVAILABLE

---

- |  |                                   |   |
|--|-----------------------------------|---|
| • 40 AH, 40 QBH, & 40 QKH Floorplans                                     | • Vicinity and Novara Bianco Tile | • Luster Sheen Cabinetry Finish           |
| • Coastal Sand III, Trend Beige III, and Artists Taupe III Fabric Suites | • Generation 9 Paint Schemes      | • Molded-in Shower Seats on 36 SH & 37 BH |
| • Belgian and Cocoon Ultraleather Colors                                 | • L-Shapes Sofa Furniture Options | • Mobileye® Collision Avoidance System    |

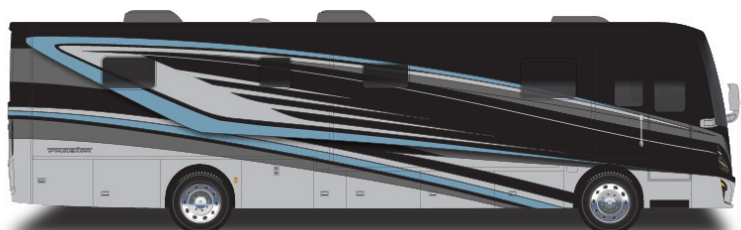
## Premium Paint System

Our Generation 10 and Generation 11 premium paint schemes now give you 15 different ways to make your 2023 Phaeton your very own. To learn more, visit [tiffinmotorhomes.com](https://tiffinmotorhomes.com).

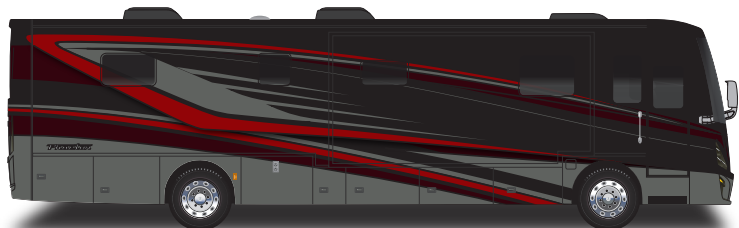
### GENERATION 10



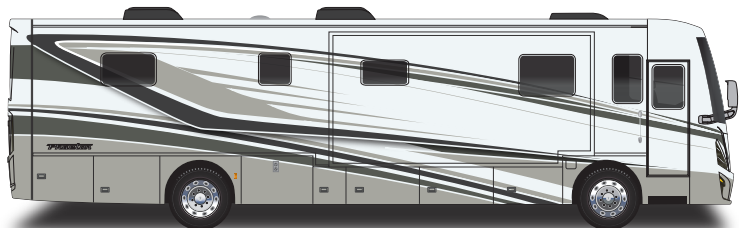
G10 MAROON CORAL



G10 EURO BLUE

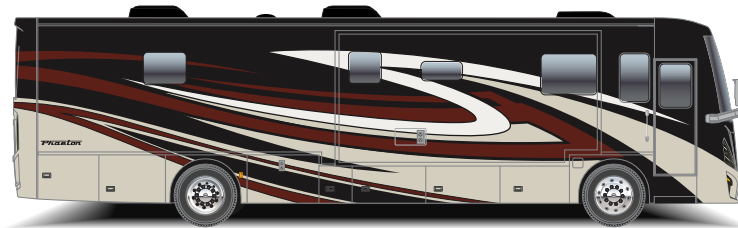


G10 FIRE OPAL



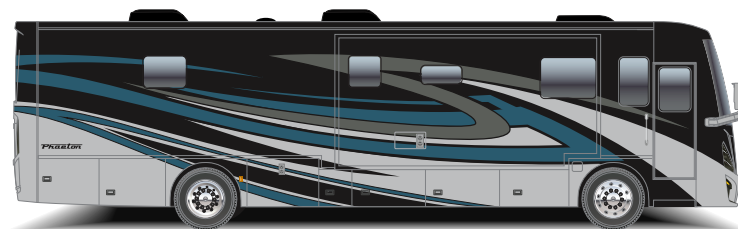
G10 FROSTED GRANITE

### GENERATION 11



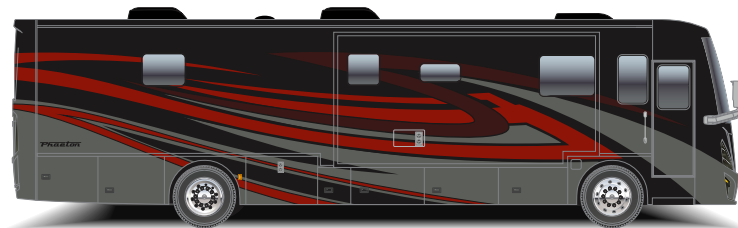
G11 MAROON CORAL

NEW



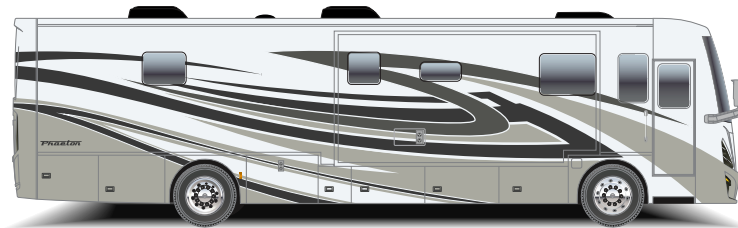
G11 EURO BLUE

NEW



G11 FIRE OPAL

NEW



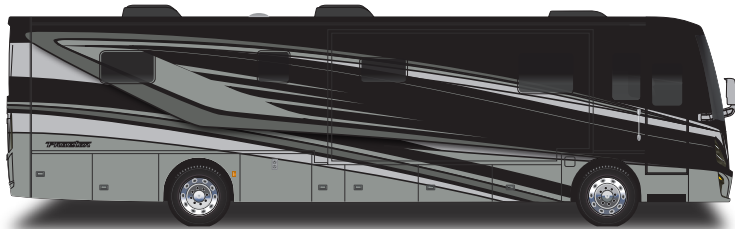
G11 FROSTED GRANITE

NEW

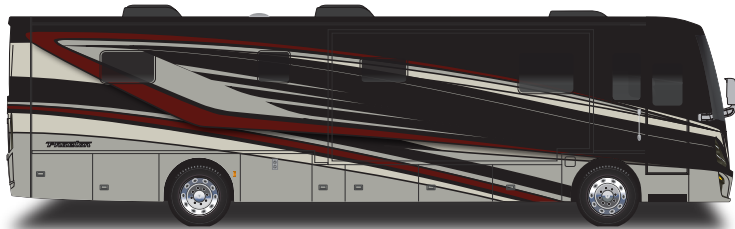


## Premium Paint System

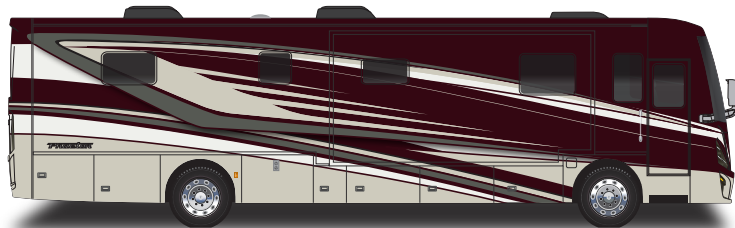
### GENERATION 10



G10 NASA

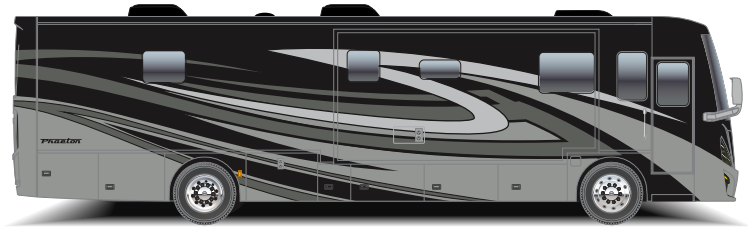


G10 SUNLIT SAND



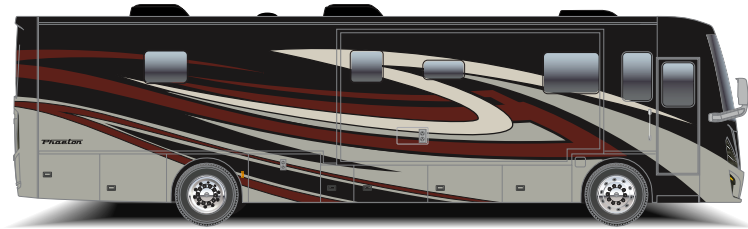
G10 WHITE MAHOGANY

### GENERATION 11



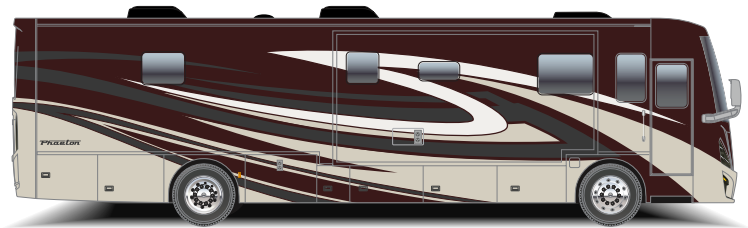
G11 NASA

NEW



G11 SUNLIT SAND

NEW



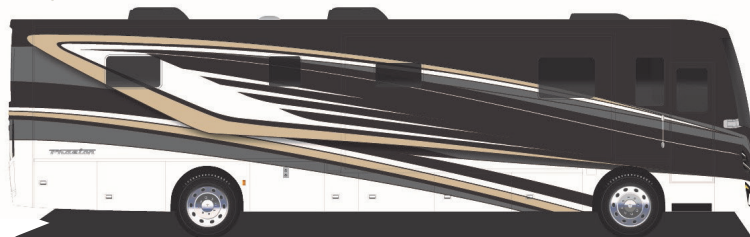
G11 WHITE MAHOGANY

NEW



50TH ANNIVERSARY

NEW



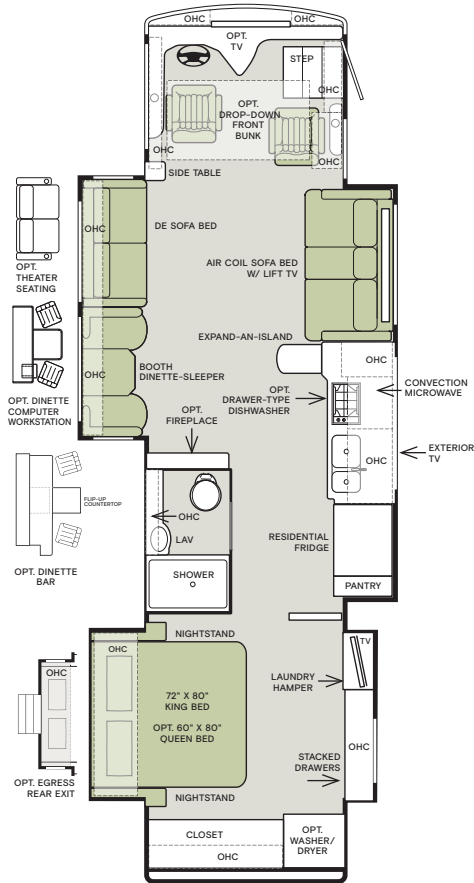
### NO LONGER AVAILABLE

• Generation 9 Paint Scheme

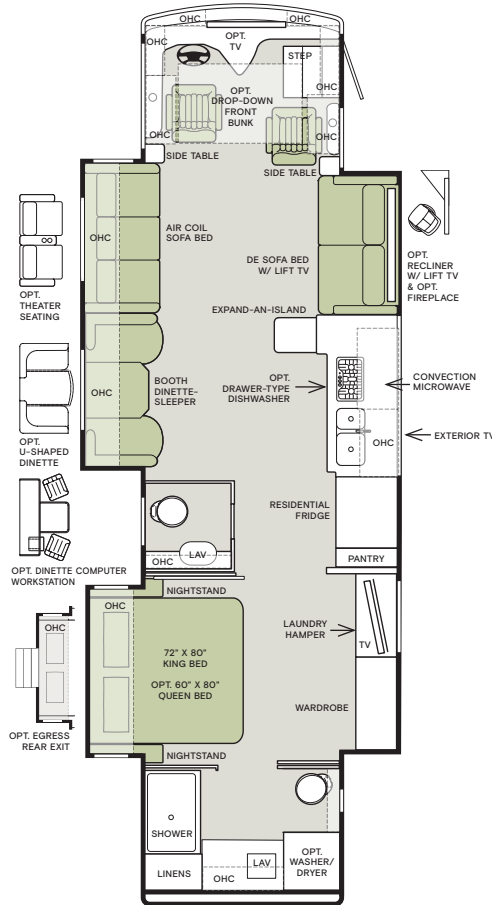
Images shown are representations of paint layouts and colors only and do not reflect all exterior features or options.

## Floor Plans

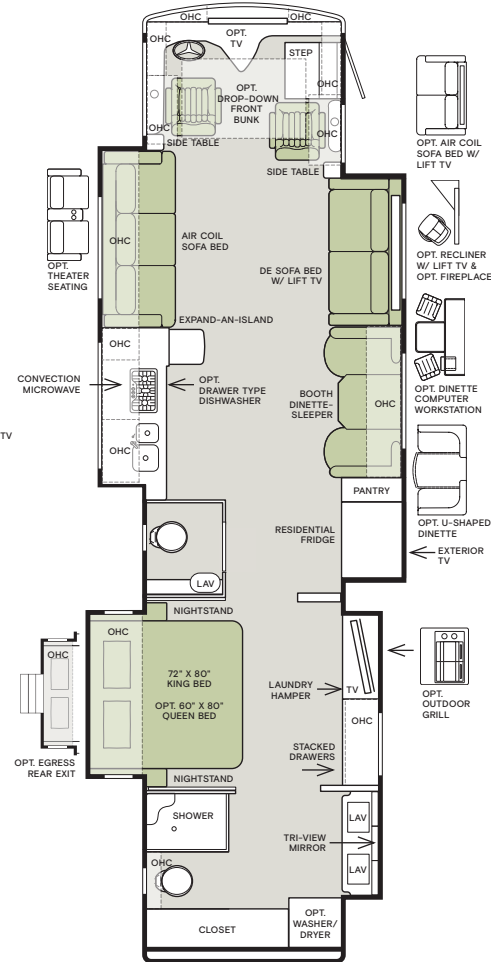
### 36 SH



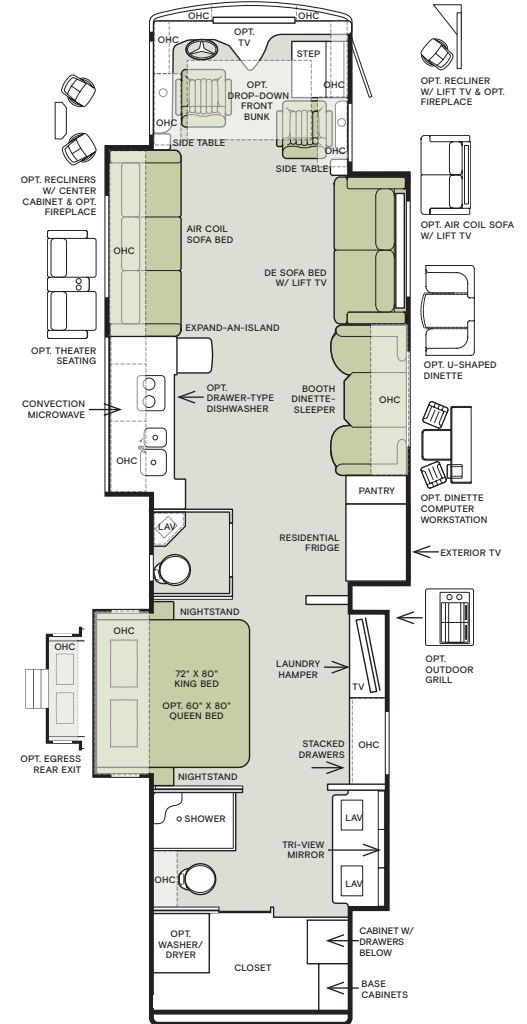
### 37 BH



### 40 IH



### 44 OH



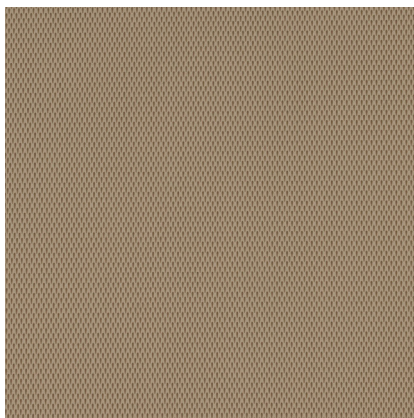
The design of every Phaeton floor plan must meet four essential criteria: Maximum space, Optimal organization, Relaxation plus, and Elegant atmosphere. Tiffin's MORE Plans offer your family the most comfortable layout for life on the road.

If optional furniture combinations are selected, window locations may vary from diagram shown. All options may not be available in every model. Because of progressive improvements and specifications, standard and optional equipment are subject to change without notice or obligation. For a complete and up-to-date list of available options and specifications, visit [tiffinmotorhomes.com](http://tiffinmotorhomes.com).

## Interior Décor

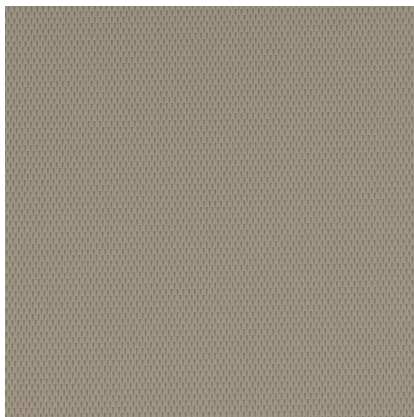
Make your experience on the road all your own. Express yourself by choosing the interior appointments such as cabinet finishes, flooring, and décor ensembles for every part of your motorhome. In the 2023 Phaeton, you'll be able to travel in style no matter where you go.

### ULTRALEATHER



TRAIL

NEW



TAUPE HILLS

NEW

### CABINETS



AMBER GLAZED <sup>1</sup>



SHADOW <sup>2</sup>



PURE LINEN <sup>1</sup>

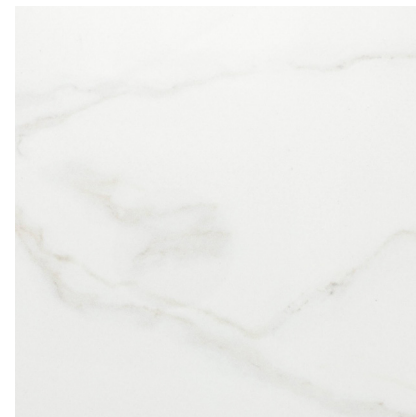
### FLOORING



VICINITY NATURAL (S)

MATTE FINISH TILE

NEW



CONTESSAORA (O)

GLOSSY FINISH TILE

NEW

## NO LONGER AVAILABLE

\* Belgian Sand UltraLeather

<sup>1</sup> Amber Glazed and Pure Linen cabinetry stains require Vicinity Natural tile.

<sup>2</sup> Shadow cabinetry stain requires Contessaora tile.

Because of progressive improvements and specifications, standard and optional equipment are subject to change without notice or obligation. For a complete and up-to-date list of available options and specifications, visit [tiffinmotorhomes.com](http://tiffinmotorhomes.com).



## MOROCCO

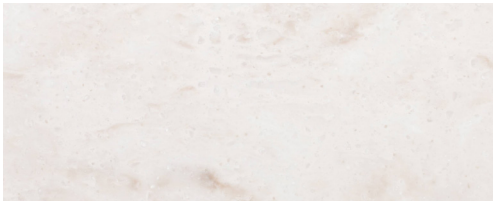
NEW



WINDOW TREATMENT



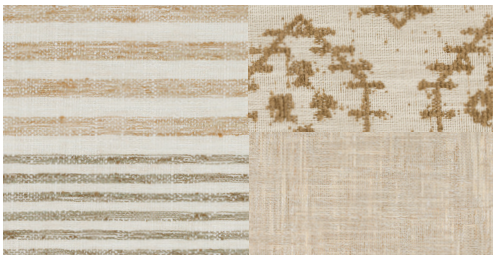
BACKSPLASH



COUNTERTOP



LIVING ROOM



MASTER SUITE

## OCEANSIDE

NEW



WINDOW TREATMENT



BACKSPLASH



COUNTERTOP



LIVING ROOM



MASTER SUITE

## CAPRI

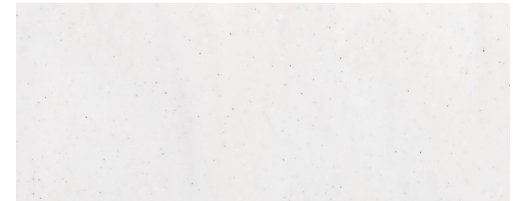
NEW



WINDOW TREATMENT



BACKSPLASH



COUNTERTOP



LIVING ROOM



MASTER SUITE

**NO LONGER AVAILABLE**

Artist Taupe III, Coastal Sand III and Trend Beige III



Specifications, Features, and Options

KEY : S : Standard Feature | O : Optional Feature; Additional costs may apply | D : Dependent Feature; Feature is bundled with another optional feature | — : Not Available

WEIGHTS AND MEASURES	36 SH	37 BH	40 IH		44 OH	
CHASSIS	Freightliner® Chassis (S)	Freightliner® Chassis (S)	Freightliner® Chassis (S)	PowerGlide® Chassis (O)	Freightliner® Chassis (S)	PowerGlide® Chassis (O)
DIMENSIONS						
Overall Length (approx.) <sup>1</sup>	37' 2"	38' 2"	41' 4"	41' 4"	45'	45'
Overall Width <sup>1</sup>	101"	101"	101"	101"	101"	101"
Overall Height	12' 7"	12' 7"	13' 3"	13' 3"	13' 3"	13' 3"
Minimum Garage Height	14'	14'	14'	14'	14'	14'
Interior Height	83"	83"	83"	83"	83"	83"
Interior Width	96"	96"	96"	96"	96"	96"
Basement Storage (cubic feet, approx.)	122	122	232	232	232	232
Wheel Base	222"	234"	266"	266"	310"	310"
WEIGHT LIMITS						
GAWR—Front (pounds)	14,320	14,320	15,600	15,600	15,600	15,600
GAWR—Rear (pounds)	24,000	24,000	24,000	24,000	20,000	20,000
GAWR—Tag Axle (pounds)	—	—	—	—	10,000	10,000
GVWR (pounds)	38,320	38,320	39,600	39,600	45,600	45,600
Maximum Trailer Weight (pounds) <sup>2</sup>	10,000	10,000	10,000	10,000	10,000	10,000
Hitch Rating (pounds)	10,000	10,000	10,000	10,000	10,000	10,000
GCWR (pounds)	48,320	48,320	49,600	49,600	55,600	55,600
CAPACITIES						
Fuel Tank (gallons)	100	100	100	100	100	100
DEF Tank Capacity (gallons) <sup>3</sup>	13	13	13	10	13	10
Fresh Water (gallons)	90	90	100	100	100	100
Black Water (gallons)	50	50	55	55	55	55
Grey Water (gallons)	66	66	100	100	100	100
LPG Tank (gallons) <sup>4</sup>	36	36	36	36	—	—

<sup>1</sup> The approximated coach width and length does not include side view mirrors and rear ladders.  
<sup>2</sup> Maximum trailer weight is dependent on the loading and towing variables which include the GVWR, GAWR, and GCWR, as well as adequate trailer brakes.  
<sup>3</sup> Diesel Exhaust Fluid (DEF) is the active component used in Selective Catalytic Reduction (SCR) engines to reduce nitrogen oxide emissions by 90% to meet EPA standards.  
<sup>4</sup> LPG tank can only be filled to 80% capacity.

CHASSIS AND DRIVETRAIN						
<div><div><div>• Allison® 3000 MH 6-speed Automatic Transmission with Lock-up Torque Converter</div><div>• (2) 12-Volt Flooded Lead-Acid Chassis Batteries</div><div>• Aluminum Wheels</div><div>• Hydraulic Leveling Jacks</div><div>• Air Ride Suspension System</div></div><div>CHASSIS AND DRIVETRAIN OPTIONS</div><div><div>Chassis</div><div>Freightliner® XCM Modular Rail Rear Engine Diesel Chassis</div><div>Freightliner® XCR XSH Raised Rail Rear Engine Diesel Chassis</div><div>PowerGlide® Rear Engine Diesel Chassis</div><div>Engine</div><div>Cummins® L9 380 HP Diesel Engine with 1,150 lb-ft Torque <sup>2</sup></div><div>Cummins® L9 450 HP Diesel Engine with 1,250 lb-ft Torque <sup>3</sup></div><div>Alternator</div><div>160-Amp Alternator</div><div>210-Amp Alternator <sup>4</sup></div><div>240-Amp Alternator <sup>4</sup></div><div>Tires</div><div>Front and Rear 275/80 R22.5 Tires</div><div>Front and Rear 295/80 R22.5 Tires</div><div>Independent Front Suspension</div><div>Steerable Tag Axle</div></div></div>						
			36 SH	37 BH	40 IH	44 OH
			S	S	—	—
			—	—	S	S
			—	—	O	O
			S	S	S	—
			—	—	O	S
			S	S	—	—
			—	—	D	D
			—	—	D	D
			S	S	—	—
			—	—	S	S
			—	—	S	S

<sup>1</sup> Now available on both Freightliner® and PowerGlide® Chassis.  
<sup>2</sup> Peak horsepower achieved at 2,200 RPM. Peak torque achieved at 1,200 RPM.  
<sup>3</sup> Peak horsepower achieved at 2,100 RPM. Peak torque achieved at 1,400 RPM.  
<sup>4</sup> Standard on PowerGlide® Chassis option. Not available on Freightliner® Chassis option.<sup>3</sup>

ELECTRICAL					
<div><div><div>• Spyder Controls Multiplex System Featuring App Compatibility</div><div>• 10.0-Kilowatt Onan® Manual Slide-out Generator</div><div>• Generator Slide Tray</div><div>• 2,000-Watt Pure Sine Inverter with Auto-Gen Start and Transfer Switching <sup>1</sup></div><div>• Extraordinaire™ Air Conditioning System</div><div>• (3) 15,000-BTU Low Profile Air Conditioners</div></div><div><div>• 50-Amp Shore Power with Powered Retract Reel</div><div>• Prep for Satellite</div><div>• Auxiliary Solar Port</div><div>• Energy Management System</div><div>• BluRay® Player</div><div>• Satellite Reciever</div><div>• Park Cable and Ground Satellite Hook-up</div><div>• HD Over-the-air Antenna <sup>2</sup></div></div><div><div>• 12-Volt Breaker Panel</div><div>• 12-Volt Disconnect Switch</div><div>• Rotary Disconnect Switches for House Batteries, Chassis Batteries, and Inverter</div><div>• Ground Fault Circuit Interrupter (GFCI) Outlets at Galley, Lavatories, and Sewer Bay</div><div>• 110-Volt Exterior Receptacle</div><div>• Surge Guard® Transfer Switch</div><div>• USB Receptacles Throughout Coach</div></div></div>					
ELECTRICAL OPTIONS					
Heating and Cooktop Power Source	Liquid Propane (LP) Coach <sup>3</sup>	36 SH	37 BH	40 IH	44 OH
	All-Electric Coach <sup>4</sup>	S	S	S	—
House Batteries	(6) 6-Volt Flooded Lead-Acid Batteries	O	O	O	S
	(6) 6-Volt Extended Cycle AGM Batteries	O	O	O	O
	(3) 12-Volt Lithium Batteries	O	O	O	O
Battery Slide-out Tray <sup>5</sup>		D	D	D	D
Heat Sources	(2) 30,000-BTU Ducted Furnaces <sup>6</sup>	D	—	D	—
	(1) 30,000-BTU and (1) 20,000-BTU Ducted Furnaces <sup>6</sup>	—	D	—	—
	Aqua-Hot® 450D Heat Exchanger <sup>7</sup>	D	D	D	S
In-motion Satellite Dish <sup>8</sup>		O	O	O	O
Prewiring for Winegard® Trav'ler™ Satellite		O	O	O	O
Solar Panels	Prep for Solar Panels <sup>9</sup>	O	O	O	O
	(3) Solar Panels	O	O	O	O
	(6) Solar Panels	O	O	O	O
Wi-Fi Booster <b>UPDATED</b>		O	O	O	O
Cellular Signal Booster <b>NEW</b>		O	O	O	O

<sup>1</sup> Automatic generator start capabilities controlled through Spyder Control Multiplex System.  
<sup>2</sup> Requires subscription.  
<sup>3</sup> Propane is used to power the ducted furnaces, the water heater, and liquid propane cooktops.  
<sup>4</sup> Replaces the ducted furnaces, the Truma AquaGo™ water heater, and liquid propane cooktops with an Aqua-Hot® heat exchanger and induction cooktops. Removes LPG tank. All-electric coaches still require diesel for the engine and either shore power or a generator to operate air conditioning.  
<sup>5</sup> Standard with flooded and extended cycle AGM batteries. Not available with lithium batteries.  
<sup>6</sup> Standard with LP coach option.  
<sup>7</sup> Replaces ducted furnaces when all-electric coach option is selected. Aqua-Hot® heat exchanger provides both heated air and water.  
<sup>8</sup> High-definition programming is not available on a domed satellite antenna unless you subscribe to DISH Network®.  
<sup>9</sup> Includes docking ports for aftermarket solar panels.

PLUMBING					
<div><div><div>• Aqua View Showermiser™</div><div>• Water Pump Switch Access from Spyder System and Sewer Bay Board</div><div>• Water Filter</div><div>• Low-point Water Drain Lines</div><div>• Black Holding Tank Flush System</div></div><div><div>• Gravity Water Fill</div><div>• Heated Water and Holding Tank Compartment</div><div>• SeeLevel™ Tank Monitor <b>NEW</b></div><div>• Centralized Exterior Sewer Bay with Gravity Black and Grey Evacuation Ports</div></div><div><div>• Exterior Rinse Hose with Shower Head</div><div>• Sewer Bay Hand Sanitizer and Paper Towel Holders</div><div>• Fresh Water Hose with Power Retract Reel</div></div></div>					
PLUMBING OPTIONS					
Water Heater	Truma AquaGo™ Comfort Instant Water Heater <sup>1</sup>	36 SH	37 BH	40 IH	44 OH
	Aqua-Hot® 450D Heat Exchanger <sup>2</sup>	D	D	D	—
Water Heater Bypass System <sup>3</sup>		D	D	D	—

<sup>1</sup> Now controllable through the Truma control panel and the Spyder System control panels. Standard with LP coach option.  
<sup>2</sup> Replaces Truma AquaGo™ Comfort instant water heater when all-electric coach option is selected. Aqua-Hot® heat exchanger provides both heated air and water.  
<sup>3</sup> Standard with LP coach option. Not necessary with all-electric coach option.

Because of progressive improvements and specifications, standard and optional equipment are subject to change without notice or obligation. For a complete and up-to-date list of available options and specifications, visit [tiffinmotorhomes.com](#).

Specifications, Features, and Options (Cont'd)

KEY : S : Standard Feature | O : Optional Feature; Additional costs may apply | D : Dependent Feature; Feature is bundled with another optional feature | — : Not Available

EXTERIOR					
<div><div><ul style="list-style-type: none"><li>• Full-body Paint with (4) Layers of Clear Coat</li><li>• Seamless One-piece Gel-coat Fiberglass Molded Roof Cap</li><li>• One-piece Molded Gel-coat Fiberglass Front and Rear Caps</li><li>• Rust Protective Undercoating</li><li>• High Performance Protective Film on Front Cap and Select Areas</li><li>• Girard® Powered Door Awning with Integrated LED Lighting</li><li>• Girard® Manual Window Awning Package</li><li>• Girard® Slide-out Toppers</li><li>• Steel Basement Construction</li><li>• Side-Swinging Exterior Storage Doors with Gas Shocks</li></ul></div><div><ul style="list-style-type: none"><li>• Lockable Chrome Handles on Compartment Doors</li><li>• Motion-sensor Lights in Cargo Bay</li><li>• 120-Volt and 12-Volt Outlets Inside Cargo Bays</li><li>• Charcoal Carpet Cargo Walls</li><li>• Pass-through Basement Storage</li><li>• Flush, Dual-Pane Windows</li><li>• Daytime Running Lights</li><li>• Docking Lights</li><li>• Exterior Patio Light</li><li>• Fog Lights</li><li>• Chrome Power Heated Side-View Mirrors with Integrated Cameras</li><li>• Exterior TV with Soundbar</li></ul></div><div><ul style="list-style-type: none"><li>• Fast Charge USB ports within Exterior TV Compartment</li><li>• Manual Exterior TV Compartment Door</li><li>• Deadbolt Front Entrance Lock</li><li>• Lighted Entry Door Grab Handle</li><li>• Automatic Stainless Steel Double Entry Step</li><li>• Keyless Entry System for Front Entrance and Component Doors</li><li>• Exterior Spyder System Control Panel</li><li>• Mud Flaps</li><li>• Custom Rock Guard</li><li>• Concealed Air Horn</li><li>• Limited Edition 50th Anniversary Decal</li></ul></div></div>					
EXTERIOR OPTIONS		36 SH	37 BH	40 IH	44 OH
Awnings	(1) Girard® Side-mounted Powered Patio Awning with Integrated LED Lighting	S	S	S	S
	(2) Girard® Roof-mounted Powered Patio Awnings with Integrated LED Lighting and Dual Pitch Feature	O	O	O	O
Slide Trays <sup>1</sup>	(1) Manual Storage Compartment Slide-out Tray	O	O	O	O
	(2) Manual Storage Compartment Slide-out Trays	—	—	O	O
Pull-out Outdoor Grill <sup>2</sup>		—	—	O	O
Lippert™ On-The-Go™ Ladder <sup>3</sup>		O	O	O	O

- <sup>1</sup> Trays slide out on both sides of motorhome.  
<sup>2</sup> Requires one storage compartment slide-out tray.  
<sup>3</sup> All units will ship with a Lippert™ On-The-Go™ Prepped Receiver installed.

INTERIOR					
<div><div><ul style="list-style-type: none"><li>• Handcrafted Cabinet Fascias and Doors with Concealed Hinges</li><li>• (2) Flat-Panel Televisions <sup>1</sup></li><li>• Solid Surface Galley Countertop</li><li>• Treated Carpet in Slide-out Floors</li><li>• Handcrafted Slide-out Fascia</li></ul></div><div><ul style="list-style-type: none"><li>• Soft Touch Vinyl Ceiling</li><li>• LED Lighting</li><li>• Carbon Monoxide Detector</li><li>• LPG Leak Detector</li><li>• Smoke Detector</li><li>• Fire Extinguisher</li></ul></div><div><ul style="list-style-type: none"><li>• Solar and Privacy Shades</li><li>• Soft-closing Drawer Slides</li><li>• Powered Roof Vents</li><li>• Central Vacuum System with VacPan® Automatic Dustpan</li><li>• Interior Grab Handle at Entry Door</li></ul></div></div>					
INTERIOR OPTIONS		36 SH	37 BH	40 IH	44 OH
Treated Fabric Suites <sup>2</sup>	Morocco	NEW	O	O	O
	Oceanside	NEW	O	O	O
	Capri	NEW	O	O	O
Ultraleathers <sup>3</sup>	Taupe Hill	NEW	O	O	O
	Trail	NEW	O	O	O
Cabinetry Stain	Amber Glazed <sup>4</sup>	O	O	O	O
	Shadow <sup>5</sup>	O	O	O	O
	Pure Linen <sup>4</sup>	O	O	O	O
Floor Tiles	Vicinity Natural Glazed Porcelain Tile <sup>6</sup>	NEW	D	D	D
	Contessaora Glazed Porcelain Tile <sup>7</sup>	NEW	D	D	D
Washer & Dryer	Prep for Washer and Dryer	S	S	S	S
	Stacked Washer and Dryer	O	O	O	O
Gold Heat® Heated Tile Floor		O	O	O	O
Bedroom Egress Door		O	O	O	O

- <sup>1</sup> Located in living area and bedroom.  
<sup>2</sup> Artist Taupe III, Coastal Sand III and Trend Beige III are no longer available.  
<sup>3</sup> Belgian and Cocoon are no longer available.  
<sup>4</sup> Amber Glazed and Pure Linen cabinetry stains require Vicinity Natural tile.  
<sup>5</sup> Shadow cabinets must be paired with Contessaora tile.  
<sup>6</sup> Vicinity and Articulo White floor tiles are no longer available. Vicinity Natural is not available with Shadow cabinetry stain.  
<sup>7</sup> Vicinity and Articulo White floor tiles are no longer available. Contessaora is required with Shadow cabinetry stain.

DRIVER'S COMPARTMENT					
<div><div><ul style="list-style-type: none"><li>• Ultraleather Power Driver and Passenger Seats</li><li>• Integrated Seat Belts on Driver and Passenger Seats</li><li>• Powered Passenger Seat Footrest</li><li>• Tilt and Telescoping Steering Wheel with Integrated Controls</li><li>• Adjustable Accelerator and Brake Pedals</li><li>• Digital Dash Cluster</li><li>• Backlit Dash Switches</li><li>• Storage Drawer in Dash</li><li>• Dual Dash Fans</li><li>• 12-Volt Dash Receptacle</li><li>• USB Dash Receptacles</li></ul></div><div><ul style="list-style-type: none"><li>• Driver-focused Wraparound Dash</li><li>• Cupholders on Driver and Passenger Side</li><li>• Built-in Driver and Passenger Consoles</li><li>• Passenger Side Spyder System Control Panel</li><li>• Driver and Passenger Map Lights</li><li>• One-piece Panoramic Windshield</li><li>• Single-motor Intermittent Windshield Wipers</li><li>• Automatic LED Headlights</li><li>• Side-view Cameras <sup>1</sup></li><li>• Color Back-up Camera Monitor</li><li>• Stereo with AM &amp; FM Radio, CD Player, and Satellite Radio <sup>2</sup></li><li>• Ceiling Mounted Speakers</li><li>• Auxiliary Start Switch</li></ul></div><div><ul style="list-style-type: none"><li>• Driver's Compartment Overhead Cabinets with Wooden Panel Doors</li><li>• Manual Opening Driver Side Window</li><li>• Solid, Non-opening Passenger Side Window</li><li>• Powered Solar and Privacy Windshield Shade</li><li>• Manual Solar and Privacy Shades on Side Windows</li><li>• Solid Surface Step Well</li><li>• Powered Step Well Cover</li><li>• Storage Compartment Within Entry Steps</li><li>• Recessed Lighting Within Step Well</li></ul></div></div>					
DRIVER'S COMPARTMENT OPTIONS		36 SH	37 BH	40 IH	44 OH
In-dash Navigation System		O	O	O	O
Front Overhead TV		O	O	O	O
Front Overhead Drop-Down Bunk <sup>3</sup>		O	O	O	O
Blind Spot Monitoring System		O	O	O	O
DINETTE AND LIVING AREA		36 SH	37 BH	40 IH	44 OH
Driver Side Dinette	Ultraleather Booth Dinette-Sleeper <sup>1</sup>	UPDATED	S	S	—
	Dinette Computer Workstation <sup>2</sup>	UPDATED	O	O	—
	Dinette Bar	O	—	—	—
	Ultraleather U-shaped Dinette	—	O	—	—
	Overhead Dinette Cabinets	S	S	—	—
Driver Side Furniture	Ultraleather DE Sofa Bed <sup>3</sup>	S	—	—	—
	Ultraleather Air Coil Sofa Bed <sup>4</sup>	—	S	S	S
	Theater Seating	O	O	O	O
	(2) Ultraleather Recliners with Center Cabinet	—	—	—	O
	(2) Ultraleather Recliners with Center Cabinet and Fireplace <sup>5</sup>	—	—	—	O
Passenger Side Dinette	Fireplace	O	—	—	—
	Ultraleather Booth Dinette-Sleeper <sup>1</sup>	UPDATED	—	—	S
	Dinette Computer Workstation <sup>2</sup>	UPDATED	—	—	O
	Ultraleather U-shaped Dinette	—	—	O	O
	Overhead Dinette Cabinets	—	—	S	S
Passenger Side Furniture	Ultraleather DE Sofa Bed with Lift TV <sup>3</sup>	—	S	S	S
	Ultraleather Air Coil Sofa Bed with Lift TV <sup>4</sup>	S	—	O	O
	Ultraleather Recliner and Lift TV	—	O	O	O
	Ultraleather Recliner and Lift TV with Fireplace <sup>5</sup>	—	O	O	O

- <sup>1</sup> Piece of furniture sleeps one comfortably. Now with lift-up seat storage access. Includes forward facing seat belts.  
<sup>2</sup> Printer bump-out no longer available.  
<sup>3</sup> Piece of furniture sleeps one comfortably.  
<sup>4</sup> Piece of furniture sleeps two comfortably. Cannot option air coil sofa on both driver and passenger sides.  
<sup>5</sup> Cannot option a fireplace on both driver and passenger sides.

Specifications, Features, and Options (Cont'd)

KEY : S : Standard Feature | O : Optional Feature; Additional costs may apply | D : Dependent Feature; Feature is bundled with another optional feature | — : Not Available

KITCHEN					
<ul style="list-style-type: none"><li>Stainless Steel Residential Refrigerator</li><li>Stainless Steel Convection Microwave with Exterior Venting</li><li>Double Bowl Kitchen Sink with Single Lever Faucet and Pull-down Sprayer</li></ul>		<ul style="list-style-type: none"><li>Built-in Soap Dispenser</li><li>Galley Overhead with Pull-out Drawers</li><li>Panoramic Galley Window</li><li>Expand-An-Island</li></ul>		<ul style="list-style-type: none"><li>LED Countertop Lighting</li><li>Full Tile Backsplash</li><li>Solid Surface Galley Countertop, Sink, and Cooktop Cover</li></ul>	
KITCHEN OPTIONS		36 SH	37 BH	40 IH	44 OH
Cooking Appliances	Three-Burner Liquid Propane Cooktop <sup>1</sup>	D	D	D	—
	Two-Burner Induction Cooktop <sup>2</sup>	D	D	D	S
Drawer-style Dishwasher		O	O	O	O

<sup>1</sup> Standard with LP Coach option.  
<sup>2</sup> Replaces three-burner liquid propane cooktop when all-electric coach option is selected.

BATHROOM					
<ul style="list-style-type: none"><li>Solid Surface Lavatory Top</li><li>One-Piece Molded Fiberglass Shower<sup>1</sup> <b>UPDATED</b></li></ul>		<ul style="list-style-type: none"><li>Handheld Shower Head with Slide Bar</li><li>Shower Skylight</li><li>Shower LED Light with Sliding Cover</li></ul>		<ul style="list-style-type: none"><li>Towel and Toilet Paper Holders</li><li>Roof Vent Fan</li></ul>	
BATHROOM OPTIONS		36 SH	37 BH	40 IH	44 OH
Number of Bathrooms	(1) Bathroom	S	—	—	—
	(1) Bathroom and (1) Half-bath <sup>2</sup>	—	S	S	S
Master Bathroom Sink	(1) Porcelain Master Bathroom Sink	S	S	—	—
	(2) Porcelain Master Bathroom Sinks	—	—	S	S
Toilet	(1) Gravity Flush Toilet	S	—	—	—
	(1) Gravity Flush Toilet and (1) Macerator Toilet	—	S	S	S
Master Bathroom Medicine Cabinet	Mirrored Medicine Cabinet	S	S	—	—
	Medicine Cabinet with Tri-view Vanity Mirror	—	—	S	S

<sup>1</sup> Added foot ledge and removed molded-in shower seats to allow for more room (36 SH and 37 BH only).  
<sup>2</sup> All half-baths contain a toilet and a solid surface countertop with a single porcelain sink.

BEDROOM					
<ul style="list-style-type: none"><li>Under Bed Storage</li><li>Bedside Windows</li><li>Overhead Cabinet with Headboard</li><li>Bed Comforter with Throw Pillows</li></ul>		<ul style="list-style-type: none"><li>Strategically-placed, Handcrafted Privacy Door</li><li>Nightstand with Solid Surface Tops</li><li>Mounted Flat-panel TV</li></ul>		<ul style="list-style-type: none"><li>Centralized Entertainment Center <sup>1</sup></li><li>Ceiling Fan</li><li>Laundry Hamper</li></ul>	
BEDROOM OPTIONS		36 SH	37 BH	40 IH	44 OH
Mattress	Memory Foam King Mattress (72" x 80")	S	S	S	S
	Memory Foam Queen Mattress (60" x 80")	O	O	O	O
Bedroom Storage	Floor-to-ceiling Closet Space	S	—	S	—
	Wardrobe with Drawers Underneath	—	S	—	—
	Walk-in Closet	—	—	—	S
Safe		O	O	O	O

<sup>1</sup> Houses BluRay® player, satellite reciever, and cable TV hook-up.

1

YEAR OR 12,000 MILES  
LIMITED WARRANTY

5

YEARS OR 50,000 MILES  
DELAMINATION  
LIMITED WARRANTY

10

YEARS OR 50,000 MILES  
CONSTRUCTION  
LIMITED WARRANTY

1

YEAR COACH  
ROADSIDE SERVICE

∞

ONGOING  
CUSTOMER SUPPORT

FOR PARTS & SERVICE CALL 256.356.0261 OR VISIT [TIFFINMOTORHOMES.COM](http://TIFFINMOTORHOMES.COM)

105 2ND ST NW RED BAY, AL 35582 [f](#) [i](#)



**TIFFIN**

MOTORHOMES

©2021 Tiffin Motorhomes, Inc. Allegro®, Allegro Breeze®, Allegro RED®, Phaeton®, Allegro Bus®, Zephyr®, Wayfarer®, Roughing It Smoothly®, Open Road®, PowerGlide®, Pusher® and Cahaba® are registered trademarks of Tiffin Motorhomes, Inc. All rights reserved.  
For all information concerning the limited warranty provided by Tiffin, please refer to the full written limited warranty set forth on the Tiffin website or held by our authorized dealerships. Please note, some interior furnishings not included.