

2016

ALLEGRO BREEZE®



TIFFIN
MOTORHOMES



SHOWN 32 BR FLOOR PLAN WITH WHITE MAHOGANY EXTERIOR PAINT SCHEME



SHOWN 32 BR FLOOR PLAN WITH CORDOVAN CABINETS & RAFFIA INTERIOR



RAFFIA BACKSPLASH & COUNTERTOP

ALLEGRO BREEZE

2016

Easygoing luxury.

The smallest luxury Class A diesel pusher on the road today, the 2016 Breeze is a masterpiece of spatial engineering. Every square inch has been maximized to make life on the go as comfortable as possible. Ceiling-mounted overhead cabinets, a built-in pantry, and basement storage give plenty of room to bring everything you need. Thanks to our PowerGlide® chassis, the Breeze is also a pleasure to drive, with easy handling, unsurpassed fuel efficiency, and nimble maneuverability.

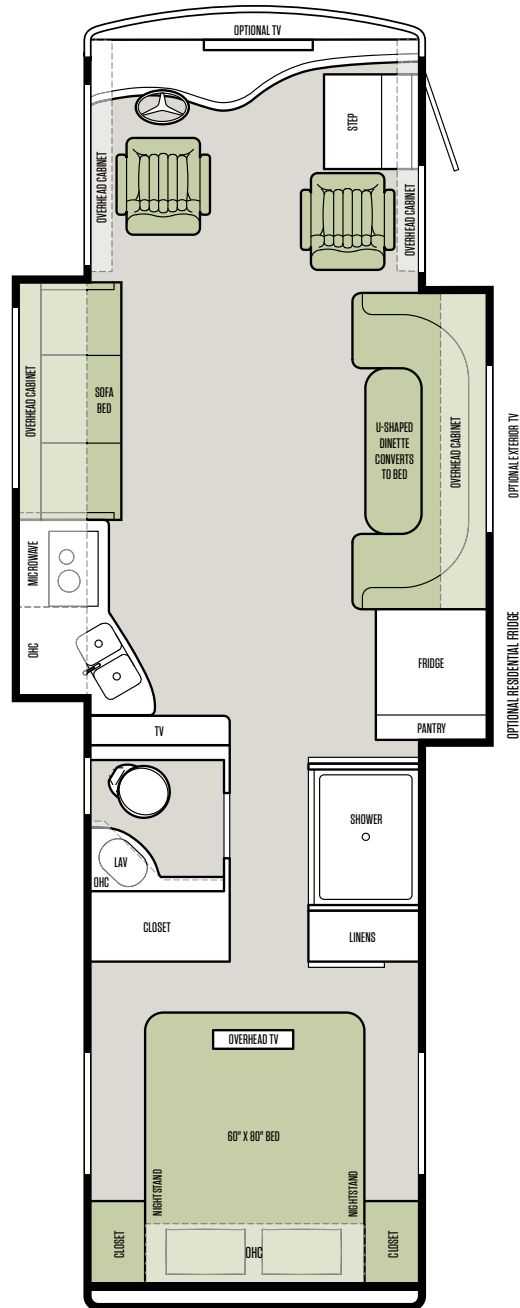
OUR SHORTEST COACH DOESN'T COME UP SHORT ON COMFORT.



SHOWN 32 BR FLOOR PLAN WITH CORDOVAN CABINETS & RAFFIA INTERIOR

Tiffin floor plans: Thoughtful in every detail and in every dimension.

32 BR



The design of every Tiffin floor plan must meet four essential criteria: **Maximum space. Optimal organization. Relaxation plus. Elegant atmosphere.** MORE plans offer your family the most comfortable layout for life on the road.

Note: If optional furniture combinations are selected, window locations may vary from diagram shown.

ENGINE

Custom-built for the 2016 Allegro Breeze: Cummins ISV5.0 V8 Diesel Engine



Powering the 2016 Breeze's energetic ride is an assertive Cummins ISV5.0 V8, the result of a unique three-year collaboration between Tiffin and Cummins. Designed, developed, and tested on the Breeze's PowerGlide chassis, the ISV5.0 exceeds traditional diesel engines in durability, reliability, and performance. Extraordinarily clean, quiet, and fuel-efficient, this state-of-the-art Cummins V8 is equipped with the latest HPCR fuel system, VGT™ Turbocharger, and emissions control technology. It also delivers impressive horsepower and torque, offering a towing capacity of up to 4,500 lb.

VGT TURBOCHARGER FROM CUMMINS TURBO TECHNOLOGIES

The VGT Turbocharger's patented design is widely recognized as the industry leader for performance. Precision boost control across the speed range delivers performance and fuel economy.

ADVANCED GLOW PLUGS

The advanced ceramic glow plug system significantly reduces startup time in extreme cold conditions, and the low current draw reduces vehicle charging system requirements. Unlike traditional bi-metal style glow plugs that need maintenance, these ceramic glow plugs are designed to last the life of the engine.

MORE POWER FOR THE POWERGLIDE™

The industry's best chassis is now even better. The addition of the custom-built Cummins V8 diesel engine to Tiffin's PowerGlide chassis represents the highest level of innovation in motorhome design. In development for more than three years, the Cummins-powered PowerGlide was rigorously tested, including more than 250,000 miles of test driving. It delivers everything an owner could wish for—durability, reliability, performance, and control. Just another example of how Tiffin goes the extra mile for our customers.

Now it's time to personalize your coach.

1

Start with our handcrafted hardwood cabinetry available in your choice of luxury finishes: Cordovan, English Chestnut or Mocha.

CABINETS



CORDOVAN



ENGLISH CHESTNUT



MOCHA

STANDARD FLOORING



TILE



CARPET

2

Then, add texture with your choice of designer fabric suites: Raffia, Toasted Almond or Zest. All fabrics are treated for stain resistance.

RAFFIA

LIVING AREA & KITCHEN



PILLOWS



VALANCE

KITCHEN



BACKSPLASH



COUNTERTOP

SOFA & COCKPIT SEATS



STANDARD LEATHER

BEDROOM



INTERIOR DÉCOR

Make your experience on the road all your own. Express yourself by choosing the interior appointments such as cabinet finishes, flooring and fabric textures for every part of your motorhome. In the 2016 Allegro Breeze, you'll be able to go in style no matter where you go.

TOASTED ALMOND

LIVING AREA & KITCHEN

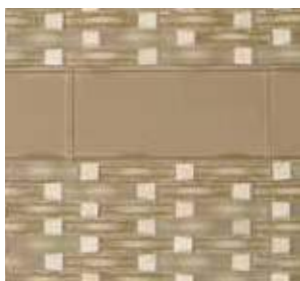


PILLOWS



VALANCE

KITCHEN



BACKSPLASH



COUNTERTOP

SOFA & COCKPIT SEATS



STANDARD LEATHER

BEDROOM



ZEST

LIVING AREA & KITCHEN



PILLOWS



VALANCE

KITCHEN



BACKSPLASH



COUNTERTOP

SOFA & COCKPIT SEATS



STANDARD LEATHER

BEDROOM



EXTERIOR DÉCOR
FULL-BODY PAINT SCHEMES

PREMIUM PAINT SYSTEM

Our eight-step full-body paint system features premium grade paints sealed with four layers of superclear coat with ultraviolet protection. An additional layer of scratch-resistant plastic coating protects the front of the coach, stairwell, and entry door lock.



GOLD CORAL



ROCKY MOUNTAIN BROWN



MAROON CORAL



SUNLIT SAND



NASA



WHITE MAHOGANY

AUTOMOTIVE

Standard on All Models:

- Allison 6-speed Automatic Transmission with Lock-up Independent Front Suspension
- Air Ride System
- Full Air Brakes
- Exhaust Brake

POWERGLIDE® REAR ENGINE DIESEL CHASSIS OPTIONS

	32 BR
Engine	Cummins ISV5.0 275
Peak HP	275 HP @ 3,200 RPM
Peak Torque (lb – Ft. Max Net)	560 @ 1,600
GAWR – Front	8,500 lb
GAWR – Rear	15,000 lb
GVWR	23,500 lb
GCWR	28,000 lb
Wheel Base	202"
Tire Size	265/70R19.5
Fuel Tank (Gallons)	70
Alternator Amps	170
Trailer Hitch Capacity	4,500 lb

WEIGHTS & MEASURES

Overall:

	32 BR
Overall Length (Approximate*)	33' 6"
Overall Height with Roof Air (Maximum)	11' 8"
Interior Height	78"
Overall Width	95"
Interior Width	91"
Fresh Water (Gallons)	70
Black Water (Gallons)	33
Grey Water (Gallons)	55
LPG Tank (Gallons; can only be filled to 80% capacity)	20
Basement Storage (Cubic Feet – Approximate)	102
Minimum Garage Height	12'

*The approximated coach length does not include side-view mirrors and rear ladder.

GENERAL EXTERIOR

Standard on All Models:

- Exterior Rinse Hose/Shower
- Back-up Camera
- 110 V Exterior Receptacle
- Inverter for TV & Entertainment Center Only
- Undercoating
- Roof Ladder
- External Tripod Satellite Hook-up
- Exterior Storage Compartment Lights
- Paint Protective Film on Front Cap
- Seamless, One-piece Fiberglass Composite Slide-out Box Construction
- Side-view Cameras Activated by Turn Signals
- Full-body Paint
- Level Air System
- Low Profile Roof AC - Front
- Low Profile Roof AC - Rear

Available Options:

32 BR

In-motion Satellite Dish	○
Low Profile Roof AC with Heat Pump (in Place of Front AC)	○
Exterior TV	○

GENERAL INTERIOR

Standard on All Models:

- High Gloss Raised Panel Hardwood Cabinet Doors
- Vinyl Headliner
- Treated Carpet & Fabrics
- Vinyl Tile Flooring
- Ball Bearing Drawer Slides
- Solar & Privacy Shades in Living Room
- LED Lighting
- 6-gallon DSI Gas/Electric Water Heater
- Tank Level Monitor System
- Extraordinaire™ AC System
- Step Well Cover
- USB Ports

Available Options:

32 BR

Vacuum Cleaner System	○
Cordovan Solid Cabinet Doors & Drawer Fronts	○
English Chestnut Solid Cabinet Doors & Drawer Fronts	○
Mocha Solid Cabinet Doors & Drawer Fronts	○
Two Ducted Furnaces	○

COCKPIT

Standard on All Models:

- Power Leatherette Driver & Passenger Seats
- Lighted Instrument Panel
- Contemporary-styled Dash
- Single CD Player & AM/FM Stereo
- Satellite Radio (Subscription Required)
- 12 V Dash Receptacles
- USB Dash Receptacle
- Back-up Monitor
- Dash Gauges with Diagnostic System
- Dual Dash Fans
- Power Solar & Privacy Windshield Shades
- Manual Solar & Privacy Shades on Side Windows
- Auxiliary Start
- Adjustable Gas & Brake Pedals
- Snack Tray with Two Cupholders
- Fire Extinguisher
- Drawer in Dash

Available Options:

32 BR

Front Overhead TV	○
-------------------	---

LIVING AREA/DINETTE

Standard on All Models:

- U-shaped Dinette Converts to Bed
- Midsection TV
- Inverter for Televisions & Surround Sound
- Leatherette DE Sofa/Sleeper on Driver Side
- Home Theatre Surround Sound System

KITCHEN

- Standard on All Models:**
- Solid Surface Countertops
 - Double Bowl Stainless Steel Sink
 - 2-burner Cooktop with Hinged Cover
 - Full Tile Backsplash
 - Convection Microwave with Exterior Venting
 - 2-door Refrigerator with Pantry

Available Options:

	32 BR
Icemaker in Freezer	○
Residential Refrigerator	○

BEDROOM

- Standard on All Models:**
- Dual Wardrobes with Banks of Drawers
 - Four Large Drawers in Bed Pedestal
 - Privacy Door in Hallway
 - Bed Comforter with Throw Pillows
 - Solar & Privacy Shades
 - Overhead TV
 - Memory Foam Queen Mattress
 - Carbon Monoxide & Propane Gas Detectors
 - Tile Flooring

BATH

- Standard on All Models:**
- Medicine Cabinet
 - Satin Nickel Vanity Faucet
 - Solid Surface Vanity Top
 - Skylight in Shower & LED Light
 - Molded Fiberglass One-piece Shower
 - Roof Vent Fan

WARRANTY

The Tiffin Five-Star Warranty.
The best in the business, bar none.



At Tiffin Motorhomes, we build for quality first and foremost, limiting our production to just 12 coaches a day to ensure meticulous craftsmanship. It may not be the most business-savvy way to run a company but it is the best way. By investing the time and effort to do things right, we want you, as a Tiffin owner, to have the utmost confidence in your coach, as well as a peace of mind you won't find with other manufacturers. You see, not only do we stand proudly behind our product, we stand behind you as well.

★ **10**

**YEAR
CONSTRUCTION
WARRANTY**

The structural integrity of the welded frame of entire coach is warranted for 10 years.

★ **5**

**YEAR
DELAMINATION
WARRANTY**

We guarantee against all exterior fiberglass delamination or wall separation for 5 years.

★ **1**

**YEAR
COMPREHENSIVE
WARRANTY**

Your coach is warranted against defects in materials and workmanship for 12 months, or 12,000 miles of use.

★ **1**

**YEAR
COACH ROADSIDE
SERVICES**

Available through Coach-Net, the country's largest RV emergency road service, this program provides 24/7 access to responsive roadside and technical assistance.

★ **Ongoing
Owner
Support**

No other motorhome company can compare with Tiffin's exceptional customer service. Email us at service@tiffinmotorhomes.com or call: **256/356.8661**.



A family business built around yours.

The Allegro Breeze is one of only two Tiffin coaches to feature our very own PowerGlide® chassis. Built at our plant in Red Bay, Alabama, every aspect of the PowerGlide chassis is designed to give the driver confidence behind the wheel, delivering unparalleled performance, reliability, and value. As Bob says, "Nothing drives and rides like a PowerGlide."

LEFT TO RIGHT: TIM TIFFIN, VAN TIFFIN,
BOB TIFFIN, AND LEX TIFFIN

GO TO TIFFINMOTORHOMES.COM

Visit us on the web for more information on the 2016 Allegro Breeze and all 2016 Tiffin Motorhomes, along with the latest product and specification updates. Plus, watch videos and see other exclusive web content. You can also follow us on Facebook and Twitter.

FOR PARTS & SERVICE CALL [256/356.8661](tel:2563568661)

 [FACEBOOK.COM/TIFFINMOTORHOMES](https://www.facebook.com/tiffinmotorhomes)

 [TWITTER.COM/TIFFINMOTORHOME](https://twitter.com/tiffinmotorhome)