

2012 ALLEGRO BREEZE®



TIFFIN MOTORHOMES



TIFFIN MOTORHOMES
WHEREVER YOU GO, WE GO.



2012 ALLEGRO BREEZE

SMALL IS A BIG DEAL. Meet the 2012 Allegro Breeze from Tiffin Motorhomes, the most compact Class A diesel-pusher motor home ever produced. Named “Best of Show” at the 2010 National RV Show, this smaller-sized motor home is making an enormous impact in the motor home industry—and for good reason. Measuring a compact 28 to 32 feet, the Breeze is remarkably lightweight and wonderfully maneuverable, with responsive handling that makes it easy to drive, park, and turn. You’ll also enjoy better fuel efficiency, which allows you to drive more for less. The Breeze doesn’t come up short on comfort, either. Innovative engineering creates more living space with fewer slides. Interiors feature many of the luxurious details found in Tiffin’s larger models, such as high-end countertops, stainless steel appliances, and stylish interior designs. Five exterior colors are available with full-body BASF paint, the same high-quality paint used on luxury cars. Front cap protective film preserves the finish so your Breeze will maintain its luster for miles down the road.

Never short on style.

Smartly outfitted, inside and out, the Breeze offers all the necessities for life on the road, as well as stylish luxuries. Not an inch is wasted anywhere, plus you will find abundant storage space, with ceiling-mounted overhead cabinets, a built-in pantry, and ample undercoach storage. The cozy living area is perfectly sized for family fun with plenty of comfy seating, the option of two TVs, optional automatic satellite, surround sound system, and DVD player. For extra counter space, a protective easy-to-clean glass panel folds down over the cooktop. Like all Tiffin coaches, the Breeze's interior design options allow you to customize décor to your taste. Choose from three cabinet finishes, English Chestnut, Medium Alderwood, and Ivory Cream, and three fabric schemes, Fossil, Maui, and Summer.



32 BR Floor Plan/Maui Interior with English Chestnut Cabinets



CONVERTIBLE SOFA/SLEEPER

The lounge area does double duty. By day, the plush sofa is the perfect window seat. When the sun sets, the sofa clocks in for the night shift, unfolding into a comfy bed.



KITCHEN

Like more helping hands in the kitchen, a double bowl sink is better than a single. Clever use of space in the Breeze galley makes sure there's room for everything and everyone.





32 BR Floor Plan/Mau Interior with English Chestnut Cabinets

Nonstop comfort.

Rest assured, the Breeze's size won't diminish your slumber schedule. You'll be delighted at how much comfort can fit into such a compact coach. Sleeping accommodations begin in the living area, with a sofa and a U-shaped dinette that both convert to beds for restful relaxation. In the cozy bedroom, a queen-sized bed with memory foam mattress comes standard. Adjacent to the bedroom, an enclosed compartment houses a fiberglass shower stall with a spectacular skylight. Across from the shower area, a sleekly designed lavatory features a solid surface vanity countertop, medicine cabinet, and Fantastic® Fan exhaust vent. Separating the shower from the private lavatory is a handy convenience on the road.

CONVENIENT STORAGE

The built-in wardrobe offers room for your garments to store neatly on hangers, keeping clothes wrinkle-free while you are on the road.



BEDROOM STORAGE

With so many adventures ahead, you'll want to pack accordingly. The Breeze accommodates every item with a multitude of storage options.



ENCLOSED SHOWER

Surprisingly spacious, the fiberglass shower stall is enclosed in a separate compartment across from the lavatory with plenty of privacy for everyone.



Conveniently travel-sized.

The Allegro Breeze is built from the ground up using Tiffin's proprietary chassis, the PowerGlide®, manufactured on-site by Tiffin craftsmen at the plant in Red Bay, Alabama. Pushed along by a rear engine diesel, which delivers more torque (560 @ 1,400 rpm) and horsepower (215 HP @ 2,600 rpm) than a gas engine, the Breeze can be counted on for better fuel efficiency. Inside, the cockpit design promotes safer driving with a one-piece, tinted windshield, plus side-view cameras automatically activated by turn signals. The VIP wheel perfectly centers the pilot's location. Adjustable driver and passenger seats, with the option of Halo leather upholstery and power controls, and dual dash fans add comfort to every trip, as does the advantage of air suspension, which provides a smoother ride.



Cockpit with Back-up Monitor and Tilt Steering Wheel

SIDE-VIEW MIRROR

The cockpit is loaded with safety features to keep the driver informed of activity all around the coach, from heated power mirrors to the side-view cameras activated by turn signals.



VACUUM SYSTEM

You'll appreciate the ease and convenience of the optional vacuum cleaner system. It makes cleaning on the go truly a breeze.



BASEMENT STORAGE

No matter where you're headed, bring every single thing you need, thanks to the ample storage space available under the coach. It's designed for easy access, too.

MAXXFORCE 7

Always performing. The MaxxForce® 7 is an engine delivering outstanding power and performance to take you on a quieter, cleaner, and more efficient journey. The MaxxForce 7 delivers power at 215 horsepower with 560 lb-ft torque providing impressive acceleration along with powerful grade climbing and towing capability. Just a turn of the key and performance is always on point with the high pressure fuel injection system providing full combustion and smooth acceleration for exceptional drivability and fuel economy. Dual sequential turbochargers deliver powerful performance to prevail over a mountain or coast along the countryside without hesitation.

Reliability, serviceability and smart engineering of the MaxxForce 7 engine help reduce maintenance and increase durability, providing a comfortable ride as you drive away with confidence. The Compacted Graphite Iron (CGI) block on the MaxxForce 7 helps to reduce vibration and noise no matter the terrain while allowing for a smoother ride and increased driver and passenger comfort. If that's not enough, the CGI block also creates a stronger, more durable engine, lighter in weight than traditional gray iron material.

MaxxForce 7 owner-friendly engineering allows you to experience the freedom to go wherever whenever without complicated emissions-control technology and no extra tanks to fill. That's our commitment to providing the best solutions to our customers while meeting requirements for cleaner air; and that's something your kids, and maybe even their kids, will appreciate. Adventure awaits with MaxxForce 7 on your side.



1 Advanced EGR

- Best total Fluid Economy (NO liquid DEF)
- Easier to maintain
- Less weight
- Turn the key and you are compliant

2 Fuel Economy

- MaxxForce 7 engines offer 30 to 35% greater fuel efficiency than similarly sized gas-powered engines according to the U.S. Department of Energy

3 Lowest Total Cost of Ownership

- No extra tanks to fill
- Less DPF regenerations

4 Excellent Throttle Response

5 Unmatched Durability

- Compressed Graphite Iron Block
- Exceptional Engine Life

6 Award Winning Dealer Channel

- #1 in Customer Satisfaction—2010 JD Power & Associates
- 305 RV MaxxForce Service Centers in North America

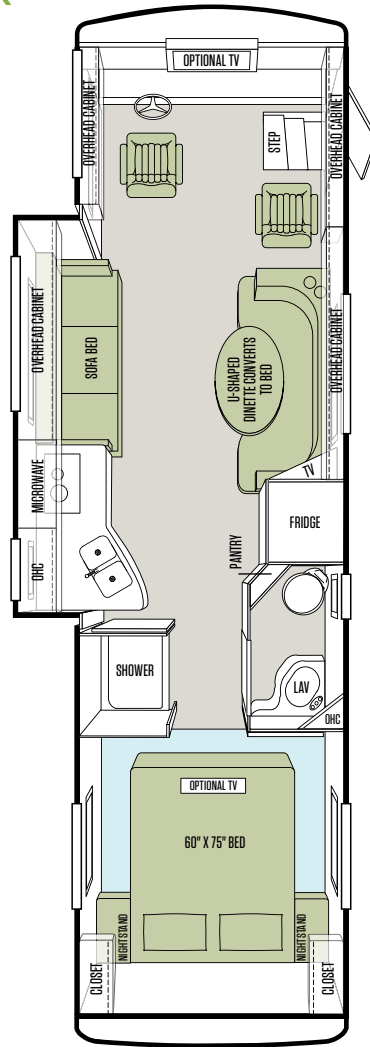
7 Warranty

- 5 year, 100,000 mile Standard Warranty
- Extended warranties available

Floor Plans* & Options

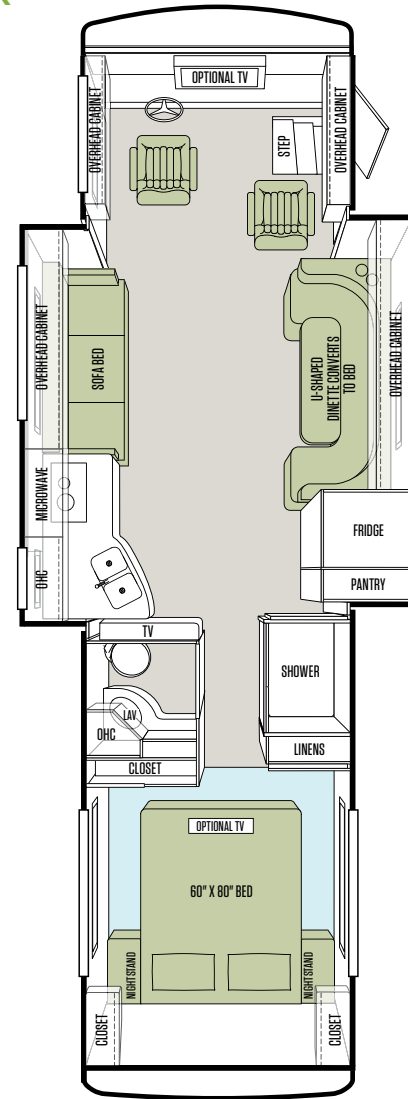
There's an Allegro Breeze floor plan perfect for how you live. That's because all Tiffin floor plans are based on ideas and recommendations from customers like you, folks who share your lifestyle needs. We actively survey owners for their suggestions on modifications that can help improve the flow and functionality of our layouts. Our engineers utilize every single inch of each plan, giving you room to roam on the inside while you roam on the outside.

28 BR



OPTIONAL TILE FLOOR
IN BEDROOM

32 BR



OPTIONAL TILE FLOOR
IN BEDROOM

*Additional floor plans may be added throughout the model year. For a complete and current list of available floor plans and options, visit us online at tiffinmotorhomes.com

Interior Décor

As attractive as Tiffin coaches are on the outside, the interior is where we excel. And the Allegro Breeze is no exception. Our interior designers have put together a selection of rich color schemes to suit many decorating styles. Each option beautifully complements the tones found in the decorative accents and hardwood cabinetry handcrafted in our Red Bay mill shop and will certainly enhance your personal decorative touches.

Cabinets



Medium Alderwood



English Chestnut



Ivory Cream

Carpet

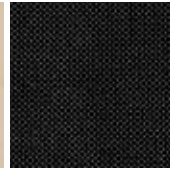


Fossil Fabric Suite

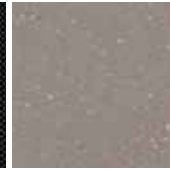
LIVING AREA



Sofa/Dinette



Accent



Countertops

BEDROOM



Main



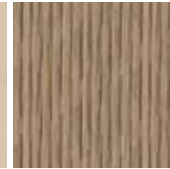
Accent

Maui Fabric Suite

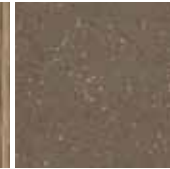
LIVING AREA



Sofa/Dinette



Accent

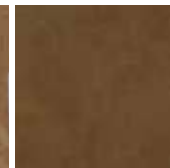


Countertops

BEDROOM



Main



Accent

Summer Fabric Suite

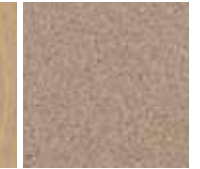
LIVING AREA



Sofa/Dinette



Accent



Countertops

BEDROOM



Main



Accent

Allegro Breeze cabinet doors are made of solid wood, and all cabinet finishes are available in combination with any fabric suite. All options may not be available in every model. Because of progressive improvements, specifications, standard & optional equipment are subject to change without notice or obligation. For a complete and up-to-date list of available options and specifications, visit tiffinmotorhomes.com



Gold Coral



Silver Sand



Maroon Coral



Sunlit Sand



Rocky Mountain Brown

Full-body Paint Schemes

Full-body paint is standard on the 2012 Allegro Breeze, as is the protective film that seals in the paint to help retain the fresh-painted shine. Tiffin's paint facility is one of the largest in the country and features a state-of-the-art air filtration system that ensures an impeccable finish. Quality control checks are integrated into the painting process. Meticulous attention is given to every single inch of the Allegro Breeze to produce the most precise application.

Specifications

Automotive

STANDARD ON ALL MODELS:

- Allison 1000 MH 6-speed Automatic with Lock-up
- Air Ride Suspension
- Full Air Brakes

Chassis

POWERGLIDE® REAR ENGINE DIESEL CHASSIS:	28 BR	32 BR
Engine	Navistar MaxxForce® 7	Navistar MaxxForce® 7
Peak HP	215 HP @ 2,600 RPM	215 HP @ 2,600 RPM
Peak Torque (Lb.—Ft. Max Net)	560 @ 1,400	560 @ 1,400
GAWR—Front	8,500 Lb.	8,500 Lb.
GAWR—Rear	13,500 Lb.	15,000 Lb.
GVWR	22,000 Lb.	23,500 Lb.
GCWR	26,000 Lb.	28,000 Lb.
Wheel Base	152"	202"
Wheel to Wheel Width	101"	101"
Tire Size	265/70R19.5	265/70R19.5
Fuel Tank (Gallons)	65	65
Alternator Amps	170	170
Trailer Hitch Capacity	4,000 Lb.	4,500 Lb.

Weights & Measures

OVERALL:	28 BR	32 BR
Overall Length (Approximate)	29' 7"	33' 2"
Overall Height with Roof Air (Maximum)	11' 2"	11' 2"
Interior Height	78"	78"
Overall Width	95"	95"
Interior Width	91"	91"
Fresh Water (Gallons)	70	70
Black Water (Gallons)	30	30
Grey Water (Gallons)	50	50
LPG Tank (Gallons; can only be filled to 80% capacity)	20	20
Basement Storage (Cubic Feet - Approximate)	45	83
Minimum Garage Height	12'	12'

Exterior

STANDARD ON ALL MODELS:

- Fiberglass Front & Rear Caps
- Tinted One-piece Windshield
- 6.0 kw Onan® Generator
- Horizontal Mounted Wipers
- Heated Power Mirrors
- Gel-coat Fiberglass Walls
- Exterior Patio Light
- Power Patio Awning
- Slide-out Awning(s)
- Entry Door Awning
- Aluminum Wheels
- Quiet A/C Roof-ducted System
- Electric Step
- Single Pane Windows
- Convenient Access Doors with Gas Shocks
- Ridged Long-life Storage Boxes
- Single Handle Lockable Storage Door Latches
- Heated Water & Holding Tank Compartments
- Two 6 V Auxiliary Batteries
- Park Telephone Ready
- Digital/Analog TV Antenna
- Cable Ready TV
- 50 Amp Service
- Black Holding Tank Flush System
- Exterior Rinse Hose/Shower
- Back-up Monitor
- 110 V Exterior Receptacle
- 110 V/12 V Converter
- Undercoating
- Roof Ladder
- External Tripod Satellite Hook-up
- Exterior Storage Compartment Lights
- Paint Protective Film
- Side-view Cameras Activated by Turn Signals
- Full-body Paint
- Level Air System

AVAILABLE OPTIONS:	28 BR	32 BR
Automatic *	O	O
13,500 BTU Low Profile Roof A/C—Front	S	S
2nd 13,500 BTU Low Profile Roof A/C—Rear	O	S
15,000 BTU Low Profile Roof A/C with Heat Pump (in Place of Front A/C)	O	O

*High-definition programming is not available on a domed satellite antenna unless you subscribe to DISH Network®.

Cockpit

STANDARD ON ALL MODELS:

- Non-power Cloth Driver & Passenger Seats (Flexsteel®)
- Lighted Instrument Panel
- Contemporary-styled Dash
- Single CD Player & AM/FM Stereo
- Dual 12 V Dash Receptacles
- Back-up Monitor
- Dash Gauges with Diagnostic System
- Dual Dash Fans
- Auxiliary Start
- Adjustable Gas & Brake Pedals
- Two Cupholders
- Power Solar/Privacy Windshield Shades
- Manual Solar/Privacy Shades on Side Windows
- Fire Extinguisher
- Snack/Beverage Tray

AVAILABLE OPTIONS:	28 BR	32 BR
Power Cloth Driver & Passenger Seats	<input type="radio"/>	<input type="radio"/>
Power Leather Driver & Passenger Seats	<input type="radio"/>	<input type="radio"/>
Front Overhead TV	<input type="radio"/>	<input type="radio"/>

Living Area/Dinette

STANDARD ON ALL MODELS:

- U-shaped Dinette Converts to Bed
- Midsection TV
- Inverter for Televisions & Optional Surround Sound
- Cloth DE Sofa/Sleeper on Driver Side

AVAILABLE OPTIONS:	28 BR	32 BR
Halo Leather DE Sofa/Sleeper on Driver Side	<input type="radio"/>	<input type="radio"/>
DVD Player (NA with Surround Sound Option)	<input type="radio"/>	<input type="radio"/>
Home Theater Surround Sound System (Includes DVD Player)	<input type="radio"/>	<input type="radio"/>

Kitchen

STANDARD EQUIPMENT ON ALL MODELS:

- Solid Surface Countertops
- Solid Surface Backsplashes and Splash Guard
- Solid Wood Refrigerator Panels
- Double Bowl Stainless Steel Sink
- 2-burner Cooktop with Folding Glass Cover
- Convection Microwave with Exterior Venting
- 8 Cubic Foot Refrigerator

AVAILABLE OPTIONS:	28 BR	32 BR
Icemaker in Freezer	<input type="radio"/>	<input type="radio"/>

Bath

STANDARD EQUIPMENT ON ALL MODELS:

- Medicine Cabinet
- Skylight in Shower & Water Closet
- Satin Nickel Vanity Faucet
- Molded Fiberglass One-piece Shower
- Solid Surface Vanity Top
- Fantastic® Fan
- Carbon Monoxide & Propane Gas Detectors

Bedroom

STANDARD EQUIPMENT ON ALL MODELS:

- Dual Wardrobes
- Bed Comforter with Throw Pillows
- Memory Foam Queen Mattress
- Four Large Drawers in Bed Pedestal
- Wall-to-wall Carpeting
- Solar/Privacy Shades

AVAILABLE OPTIONS:	28 BR	32 BR
Vinyl Tile Flooring in Bedroom	<input type="radio"/>	<input type="radio"/>
Bedroom TV	<input type="radio"/>	<input type="radio"/>

All options may not be available in every model. Because of progressive improvements, specifications, standard & optional equipment are subject to change without notice or obligation. For a complete and up-to-date list of available options and specifications, visit tiffinmotorhomes.com

Interior

STANDARD EQUIPMENT ON ALL MODELS:

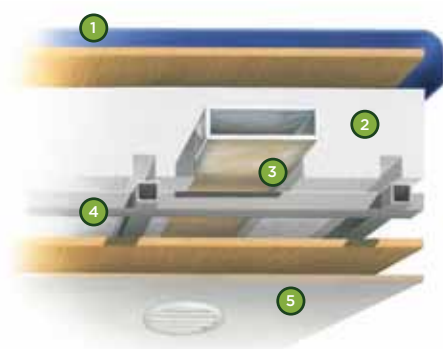
- High Gloss Raised Panel Cabinet Doors
- Vinyl Headliner
- Scotchgard® Treated Carpet & Fabrics
- Wall-to-wall Vinyl Tile Flooring in Living Room, Kitchen & Bath
- Ball Bearing Drawer Slides
- Solar/Privacy Shades in Living Room
- LED Bulbs in Ceiling Lights Only
- Tank Level Monitor System
- Smoke Detector
- 6-gallon DSI Gas/Electric Water Heater
- Step Well Cover

AVAILABLE OPTIONS:	28 BR	32 BR
Vacuum Cleaner System	<input type="radio"/>	<input type="radio"/>
Ivory Cream Solid Cabinet Doors & Drawer Fronts	<input type="radio"/>	<input type="radio"/>
English Chestnut Solid Cabinet Doors & Drawer Fronts	<input type="radio"/>	<input type="radio"/>
Medium Alderwood Solid Cabinet Doors & Drawer Fronts	<input type="radio"/>	<input type="radio"/>
Ducted Furnace	One 35,000 BTU	Two 30,000 BTU

Structural/Construction

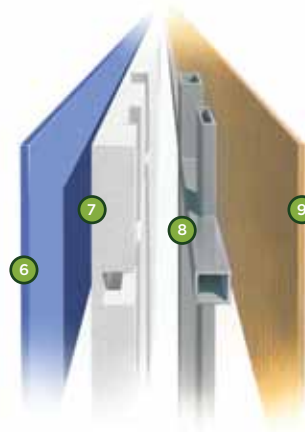
STANDARD ON ALL MODELS:

- Laminated Floor, Sidewall & Roof
- Steel/Aluminum Reinforced Structure
- One-piece Molded Fiberglass Roof Cap



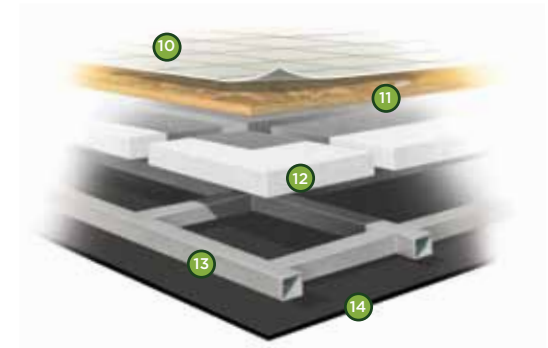
Roof

- 1 One-piece, moisture resistant molded fiberglass roof cap provides insulation and strength and prevents water intrusion
- 2 5 1/2" formed insulation
- 3 Quiet Air Cooling System with return air and foil-wrapped cooling exhaust ducts
- 4 Durable, tubular aluminum roof skeleton
- 5 Easy-to-clean soft touch vinyl ceiling panel



Sidewall

- 6 Gel-coat fiberglass outside wall panel
- 7 High-performance thermal insulation
- 8 Durable, yet lightweight, tubular aluminum wall skeleton
- 9 Decorative inside wall panel



Floor

- 10 Vinyl tile floor bonded to high-impact oriented strand board
- 11 High-level engineered oriented strand board
- 12 High-performance thermal insulation
- 13 Durable, tubular floor skeleton
- 14 Woven moisture barrier material

ALLEGRO BREEZE

Why buy a Tiffin Motorhome?

Every company under the sun talks about quality. For some, that's all it is—talk. Unlike our competitors, Tiffin Motorhomes produces many of our own parts. Not only does this give us complete control over quality, it enables us to later provide replacement parts for older models. That means, on a Tiffin coach, Tiffin craftsmen also manufactured the windows, moldings, fiberglass, textiles, finishes, millwork, custom cabinetry, and, on some models, the chassis. Building the best motor homes in the industry is our goal, and keeping a close eye on quality is always one way you can count on us to deliver.

10-YEAR LIMITED FRAME WARRANTY

We warranty the frame of the walls, floors, and roof for 10 years.

5-YEAR LIMITED SIDEWALL BOND WARRANTY

We warranty the sidewall against delamination between the outside fiberglass and the inner frame for 5 years.

tiffinmotorhomes.com

Visit us on the web for more information on the 2012 Allegro Breeze and all of our 2012 Tiffin Motorhomes, as well as the latest product and specification updates. Plus, watch videos and see other exclusive web content.

FOR PARTS & SERVICE CALL 256/356.0261

YOUR LOCAL TIFFIN DEALER:

TIFFIN MOTORHOMES



This year, Tiffin Motorhomes proudly celebrates our 40th year of building the finest motor homes on the road. What an amazing ride we've had—and are still having. Thanks to everyone who has been a part of our journey, from our dedicated team to our wonderful customers. We sure couldn't have done it without you. Fasten your seatbelts, everybody, and let's get going to make it another 40 years!

Safe travels,

Bob Tiffin

President/Founder



SOME INTERIOR FURNISHINGS NOT INCLUDED. UNLESS WHERE NOTED, ALL CONTENT ©2011 TIFFIN MOTORHOMES, INC. ALLEGRO®, ALLEGRO BREEZE®, ALLEGRO RED®, PHAETON®, ALLEGRO BUS®, ZEPHYR®, ROUGHING IT SMOOTHLY®, OPEN ROAD®, POWERGLIDE®, AND PUSHER® ARE REGISTERED TRADEMARKS OF TIFFIN MOTORHOMES, INC. ALL RIGHTS RESERVED.

105 2ND STREET NW, RED BAY, ALABAMA 35582
CALL 256/356.8661 FAX 256/356.8219

