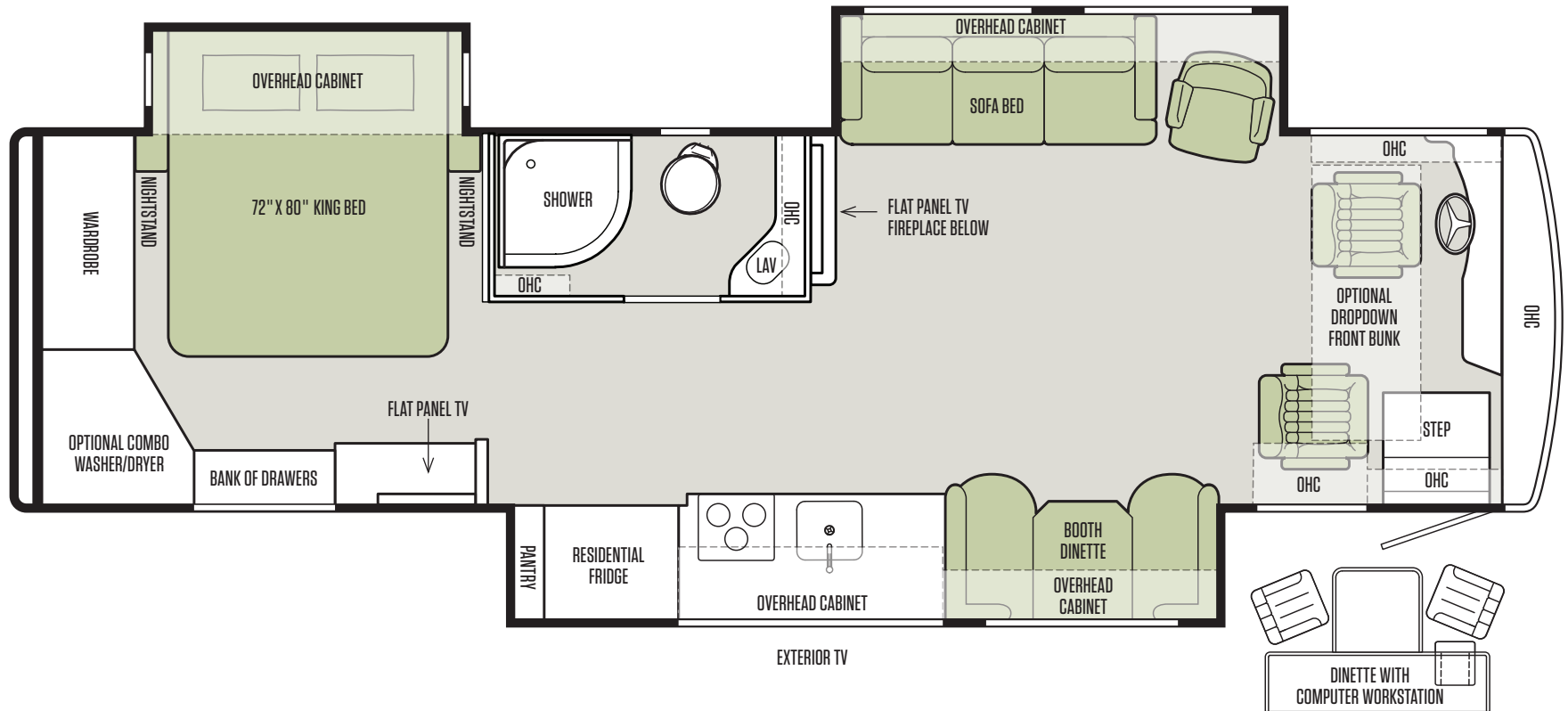


ALLEGRO **RED 340**

The 2019 Allegro RED 340 is a beautiful, powerful combination of luxury, quality and value at an entry-level price. The all-new RED 340 can easily and confidently take you where you want to go — and its spacious interior and inspiring features will make you feel comfortably at home once you reach your destination.

33 AL



THE ALL-NEW ALLEGRO RED 340 BY TIFFIN MOTORHOMES

TIFFIN
MOTORHOMES

TIFFIN MOTORHOMES | 105 2ND STREET NW | RED BAY, AL 35582 | PHONE 256-356-8661 | TIFFINMOTORHOMES.COM

FEATURES FOR THE RED 340 BY TIFFIN MOTORHOMES

PAINT SCHEMES

- 2019 Crimson
- 2019 Lapis Sky
- 2019 Maroon Coral
- 2019 Nasa
- 2019 Sunlit Sand
- 2019 White Mahogany

AUTOMOTIVE

- Straight Rail Chassis Frame
- Air Ride Suspension
- Full Air Brakes
- Exhaust Brake
- Four Aluminum Wheels
- Air Horns
- Air Leveling

POWERGLIDE® REAR ENGINE DIESEL CHASSIS

- Cummins ISB 6.7-liter Electronic Diesel, Turbocharged, Aftercooled Engine
- Allison 2500 MH 6-speed Automatic Transmission with Lock-up
- Peak HP 340 HP @ 2,600 RPM
- Peak Torque (lb – Ft. Max Net) 700 @ 1,800 RPM on 340 HP Engine
- GAWR – Front: 10,000 lb
- GAWR – Rear: 18,000 lb
- GVWR: 28,000 lb
- GCWR: 35,500 lb
- Wheel Base: 198"
- Tire Size: 255/80R22.5
- Fuel Tank (Gallons): 90
- DEF Tank* (Gallons): 10
- Alternator Amps: 130

WEIGHTS AND MEASURES

- Overall Length (Approximate**): 35' 2"
- Overall Height with Roof Air (Maximum): 12' 8"
- Interior Height: 7'
- Overall Width**: 101"
- Interior Width: 96"
- Fresh Water (Gallons): 70
- Black Water (Gallons): 50
- Grey Water (Gallons): 65
- LPG Tank (Gallons; 80% capacity limit): 24
- Basement Storage (Cubic Feet – Approximate): 71
- Minimum Garage Height: 14'
- Hitch Rating***: 7,500 lb

EXTERIOR

- Fiberglass Front and Rear Caps
- Tinted One-piece Windshield
- 8.0 kw Onan® Generator
- Horizontal Mounted Wipers
- Heated Power Mirrors
- Exterior Patio Light
- Power Patio Awning
- Awning(s) over Slide-outs
- Double Electric Step
- Front Cap Protective Film
- 50 Amp Service
- Convenient Access Doors with Gas Shocks
- Single Handle Lockable Storage Door Latches
- Heated Holding Tank Compartment
- Four 6 V House Batteries
- Color Back-up Monitor
- Full-body Paint
- Two Low Profile Roof ACs with Heat Pumps (15,000 BTUs)
- Exterior TV in Galley Slide
- Prep for Solar Panel
- Prep for Satellite

OPTIONS

- Prep for Winegard Connect
- Winegard Connect

INTERIOR

- Soft Touch Vinyl Ceiling
- Flat Panel TV in Entertainment Center with Soundbar
- Treated Carpet and Fabrics
- Ball Bearing Drawer Slides
- Solar and Privacy Shades
- Power Roof Vents
- Tank Level Monitor System
- Smoke Detector
- Truma Continuous Gas/Electric Water Heater
- 2000 Watt Sine Wave Inverter
- Carbon Monoxide Detector
- LED Lighting
- LPG Leak Detector
- DVD Player

OPTIONS

- Central Vacuum System
- Fireplace

INTERIOR DÉCOR

- Sea Oat Floor Tile
- Mocha Classic Cabinets
- Fabric Suite – Cashmere
- Leather – Brown Sugar Ultraleather

OPTIONS

- Natural Alder Cabinets
- Malta Floor Tile

BATHROOM

- Medicine Cabinet
- Molded One-piece Fiberglass Shower
- Roof Vent Fan

BEDROOM

- Flat Panel TV
- Memory Foam King Mattress (72" x 80")
- Solar/Privacy Shades

OPTIONS

- Combo Washer/Dryer

COCKPIT

- Tilt and Telescoping Steering Wheel
- Cruise Control
- Lighted Instrument Panel
- CD Player and AM/FM Stereo
- Power Solar and Privacy Windshield Shades
- Fire Extinguisher
- Ceiling Mounted Speakers
- In-dash Navigation System
- Manual Solar and Privacy Shades on Side Windows
- Ultraleather Power Driver and Passenger Seats
- Power Suspended Adjusted Fuel and Brake Pedals

OPTIONS

- Overhead Front Bunk

LIVING AREA/DINETTE

- Ultraleather Booth Dinette/Sleeper on Passenger Side
- Ultraleather Sleeper Air Coil and One Recliner on Driver Side

OPTIONS

- Dinette with Computer Work Station on Passenger Side

KITCHEN

- Large Single Kitchen Sink with Single Lever Satin Nickel Faucet
- Solid Surface Galley Countertop
- Residential Refrigerator
- 3-burner Cooktop with Convection Microwave

OPTIONS

- Oven with Convection Microwave

*Diesel Exhaust Fluid (DEF) is the active component used in Selective Catalytic Reduction (SCR) engines to reduce nitrogen oxide emissions by 90% to meet EPA standards.

**The approximated coach width and length does not include side view mirrors and rear ladders.

***Maximum Trailer Weight is dependent on the loading and towing variables which include the GVWR, GAWR and GCWR, as well as adequate trailer brakes.

ALLEGRO
RED340

TIFFIN LIMITED WARRANTY

10 YEAR CONSTRUCTION
LIMITED WARRANTY

5 YEAR DELAMINATION
LIMITED WARRANTY

1 YEAR LIMITED WARRANTY
1 YEAR COACH ROADSIDE SERVICE