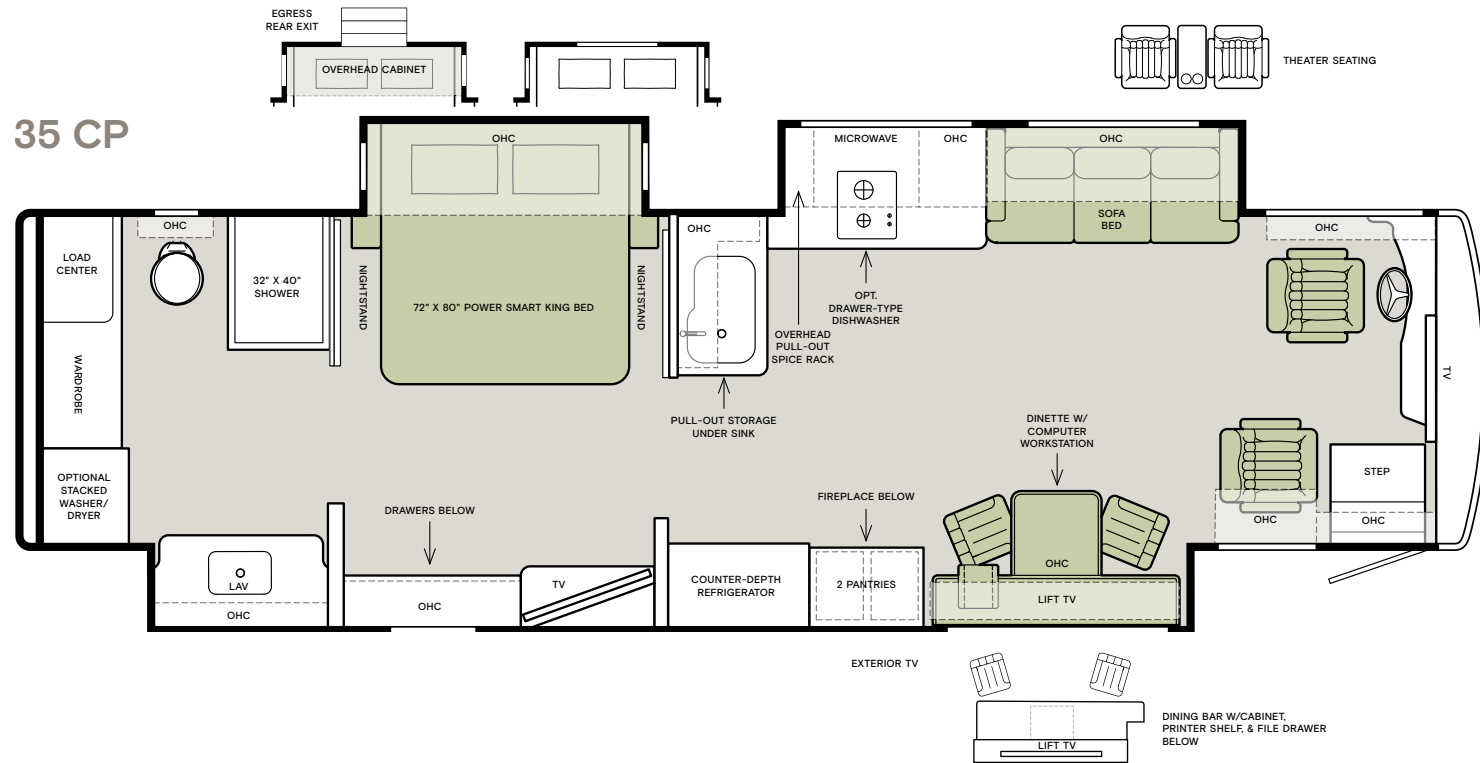


# ALLEGRO BUS

Our premium compact coach with luxurious Allegro Bus style, the New 35 CP is for those who appreciate the finer things in their home away from home. On the road, this elegant coach is the perfect traveling companion, offering a quiet controlled ride, a driver's oriented cockpit, and a generous towing capacity. Off the beaten path, it becomes a haven of upscale residential living, complete with spacious interiors, high-end amenities, and exquisite design details. Many of these luxuries are Tiffin exclusives, including our handcrafted hardwood cabinetry, dual-pane insulated windows, and the powerful, Tiffin-built PowerGlide Chassis.

If optional furniture combinations are selected, window locations may vary from diagram shown. All options may not be available in every model. Because of progressive improvements and specifications, standard and optional equipment are subject to change without notice or obligation. For a complete and up-to-date list of available options and specifications, visit [tiffinmotorhomes.com](http://tiffinmotorhomes.com).



FOR PARTS & SERVICE CALL 256.356.0261 OR VISIT [TIFFINMOTORHOMES.COM](http://TIFFINMOTORHOMES.COM) | 105 2ND ST NW RED BAY, AL 35582 [f](#) [t](#) [i](#) [p](#)

©2020 Tiffin Motorhomes, Inc. Allegro®, Allegro Breeze®, Allegro RED®, Phaeton®, Allegro Bus®, Zephyr®, Wayfarer®, Roughing It Smoothly®, Open Road®, PowerGlide®, and Pusher® are registered trademarks of Tiffin Motorhomes, Inc. All rights reserved. For all information concerning the limited warranty provided by Tiffin, please refer to the full written limited warranty set forth on the Tiffin website or held by our authorized dealerships. Please note, some interior furnishings not included.

## Specifications

### GENERAL MECHANICAL

- POWERGLIDE® Chassis with Cummins L9 450 HP/1250 lb Torque
- GVWR: 41,000 lb
- GAWR – Front: 17,000 lb
- GAWR – Rear: 24,000 lb
- GAWR-Tag Axle: NA
- GCWR: 51,000 lb
- Alternator Amps: 210
- Allison 3000 MH 6-speed Automatic Transmission with Lock-up (Torque Converter)
- Side-mounted Cooling Package
- ABS Brakes and Two-stage Compression Engine Brake
- Four Aluminum Wheels
- Suspension Air Bags: 4
- Cruise Control
- VIP Smart Wheel
- Fog Lights
- Emergency Start Switch
- Adjustable Throttle and Brake Pedals
- Independent Front Suspension
- Hitch Rating<sup>1</sup>: 10,000 lb
- Fuel Tank (gallons) – Dual Fuel Fill: 150
- Overall Length (approximately<sup>2</sup>): 37' 5"
- Overall Height with Roof Air (maximum): 13' 3"
- Interior Height: 83"
- Overall Width<sup>2</sup>: 101"
- Interior Width: 96"
- Minimum Garage Height: 14'
- Fresh Water (gallons): 100
- Black Water (gallons): 55
- Grey Water (gallons): 100
- Basement Storage (cubic feet – approximately): 180
- Wheel Base: 232"
- Tire Size: 315/80R22.5
- DEF Tank<sup>3</sup> (gallons): 10

### GENERAL EXTERIOR

- Fiberglass Front and Rear Caps
- Dual Fuel Fills
- Full-body Paint with Protective Film on Front Cap
- Exterior Ground Effects Lighting
- Large Tinted One-piece Windshield
- Heated Chrome Power Mirrors with Remote Adjustments
- Single-motor Intermittent Wipers
- Undercoating
- Deadbolt Front Entrance Door
- Keyless Entry Door System and Keyless Component Door Locks
- Exterior Flat Panel TV
- Dual Pane Tinted Windows
- Automatic Door and Patio Awning
- Girard® Awning
- Pass-through Basement Storage
- Lockable Swing-out Exterior Storage Doors with Gas Shocks
- Heated Water and Holding Tank Compartments
- SeeLevel Monitor Pad Located at Dump Station
- Auto Generator Start
- Six House Batteries
- Custom Mud Flap
- 50 Amp Service
- Power Cord Reel – 50 Amp

- Black Holding Tank Flush System
- 110 V Exterior Receptacle
- Gravity Water Fill
- Water Filter
- Docking Lights
- Exterior Rinse Hose with Soap Dispenser and Paper Towel Holder
- Concealed Air Horn
- Low Profile In-motion Satellite Dish<sup>5</sup>
- Digital TV Antenna
- Combination Valid Air Leveling System with HWH Hydraulic Leveling Jacks
- Luggage Compartment Lights
- Pure Sine Wave Inverter
- Onan® 10.0 kw Generator with Three Low Profile Roof ACs with Heat Pumps
- Prep for Winegard® TRAV'LER Satellite
- Exterior Ground Effects Lighting
- Outdoor Spyder Control System Screen
- Prep for Solar Panel
- Prep for Winegard® Connect™

#### AVAILABLE OPTIONS:

- One Storage Compartment Slide-out Tray
- One Power Storage Compartment Slide-out Tray
- Three or Six Solar Panels
- Roof Ladder
- Basement Freezer/Refrigerator
- Winegard Connect (subscription required)
- Exterior Lighting Under Slide-out
- Extended Cycle Batteries
- Power Exterior TV Door
- Power Window Awnings

### GENERAL INTERIOR

- LED Lighting
- Soft Touch Vinyl Ceilings
- Washer/Dryer Ready
- SeeLevel Tank Monitor
- Carbon Monoxide and Smoke Detectors
- Central Vacuum Cleaner with VacPan
- Multiplex Lighting System
- 10" Spyder Control System Screen
- Porcelain Tile Flooring Throughout Coach (Excluding Slide-outs)
- Complete Cable Wiring Interfacing Satellite Receiver
- Soundbar with Subwoofer
- Energy Management System
- Power Solar and Privacy Shades in Living Room
- In-motion Low Profile Satellite Dish with DISH Network® Receiver (subscription required)
- Extraordinaire™ AC System
- Hydronic Heating System
- Solid Cabinet Doors and Drawer Fronts

#### AVAILABLE OPTIONS:

- Latte, Posh II, Sand Castle II, or Tempest Fabric Suites<sup>6</sup>
- Silkworm or Grey Owl Ultraleather<sup>6</sup>
- Glazed Cherry Wood<sup>6</sup>, Glazed Canyon Cherry<sup>6</sup>, Glazed Honey Natural Cherry<sup>6</sup>, Linen Cabinets<sup>7</sup>, Sterling Cabinets<sup>7</sup>
- Stacked Washer/Dryer
- Dual Zone Heated Tile Floor

### DRIVER COMPARTMENT/COCKPIT

- Front Overhead Flat Panel TV
- Cupholders on Driver and Passenger Side
- 12 V Disconnect Switch
- Driver Side Power Window
- Integrated Seatbelts
- Ultraleather Power Driver Seats
- Ultraleather Power Passenger Seat with Footrest
- CD Player, AM/FM Stereo with Satellite Radio (subscription required)
- Color Rear Vision Monitor System with Side-view Cameras Activated by Turn Signals
- Power Solar and Privacy Windshield and Cockpit Shades
- Lighted Switches
- Fire Extinguisher
- Dual Dash Fans
- In-dash Navigation System
- USB Dash Receptacles
- USB Passenger Side Receptacles
- Power Step Well Cover
- Solid Non-opening Window on Passenger Side
- Phone Charging Station on Passenger Side

#### AVAILABLE OPTIONS:

- Mobileye®
- JBL Sound System
- Advanced Monitor (Only available with JBL Sound System)

### LIVING AREA/DINETTE

- Dinette with Computer Workstation on Passenger Side
- Ultraleather Air Coil Sofa on Driver Side
- Lift TV (Dinette Area)
- Fireplace

#### AVAILABLE OPTIONS:

- Dining Bar on Passenger Side
- Theater Seating on Driver Side

### KITCHEN

- Polished Solid Surface Countertops with Sink Covers
- Lighted Toe Kick
- Single Lever Sink Faucet with Built-in Sprayer
- Stainless Steel Dual Bowl Sink
- LED Lighting Above Countertop
- Stainless Steel Residential Refrigerator
- Stainless Steel Convection Microwave with Exterior Venting
- 2-burner Induction Cooktop
- Galley Soap Dispenser
- Galley Window
- Solid Surface Cooktop Cover

#### AVAILABLE OPTIONS:

- Drawer-type Dishwasher
- Wolf Induction Cooktop Upgrade
- Wood Refrigerator Panel

### BEDROOM

- Power Smart King Bed (72" x 80")
- Bed Comforter with Throw Pillows
- Solid Surface Nightstand Tops
- Blu-ray™ System
- Satellite Receiver
- Solar and Privacy Shades
- Wall Safe
- USB Receptacles
- Ceiling Fan
- Laundry Hamper
- Bedroom Overhead Cabinet without Window

#### AVAILABLE OPTIONS:

- No Bedroom Overhead Cabinet with Window
- Egress Rear Exit (Required Bedroom Overhead Cabinet)

### BATH

- Solid Surface Shower with Glass Door
- Medicine Cabinet with Vanity Lights
- Solid Surface Vanity Top and Glass Bowl
- Skylight and LED Light in Shower
- Roof Vent Fan
- Electric Flush Toilet

<sup>1</sup> 1 Maximum Trailer Weight is dependent on the loading and towing variables which include the GVWR, GAWR, and GCWR, as well as adequate trailer brakes.

<sup>2</sup> The approximated coach width and length does not include side-view mirrors.

<sup>3</sup> Diesel Exhaust Fluid (DEF) is the active component used in Selective Catalytic Reduction (SCR) engines to reduce nitrogen oxide emissions by 90% to meet EPA standards.

<sup>4</sup> All sidewalls are approximately 2" thick.

<sup>5</sup> High-definition programming is not available on a domed satellite antenna unless you subscribe to DISH Network®.

<sup>6</sup> Optional and no charge.

<sup>7</sup> Comes with Luster Sheen Finish