

ROUGHING IT SMOOTHLY · SUMMER/FALL 2023 · VOL. 20, NO. 3 & 4  
ALLEGRO RED 33 AA · PHAETON 44 OH · INDIANAPOLIS · CHARLOTTE · GETTYSBURG · HUNTINGTON BEACH

# ROUGHING IT Smoothly®

Brought to You by  
Tiffin Motorhomes

Summer/Fall 2023

## Family Fun

in Indianapolis  
and Charlotte

Gettysburg:  
Explore History

Catch Waves  
in Huntington Beach,  
California



*A Look at:*  
**Allegro RED 33 AA  
Phaeton 44 OH**



Driven By You

# IT'S FOR EVERYONE

**A NEW CATEGORY IN CLASS A RV SUSPENSION SYSTEMS.**



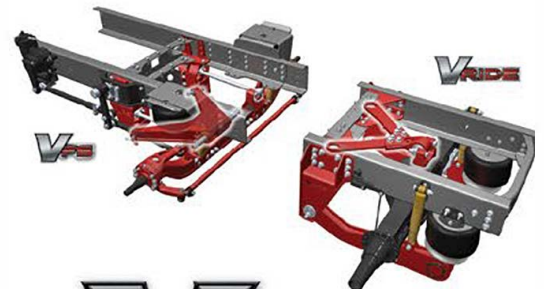
The new V-Series Suspension System from Freightliner Custom Chassis unites the proven V-Ride rear suspension with a dynamic new VFS front suspension to deliver front-to-back stability, responsiveness and comfort that rivals luxury motorhomes with IFS. V-Series brings premium handling and stability; and safer, controlled braking to a wider range of coaches in the Class A market.

With V-Series, Class A diesel further establishes itself as the best experience in RVing with the most loyal and satisfied owners. From first-time adventurers to well-traveled road veterans, V-Series on the XC chassis makes the ultimate Class A ride and drive accessible to everyone.



To learn more or to find your coach with the V-Series Suspension System, visit [FCCCRV.com/vseries](http://FCCCRV.com/vseries).

**V-SERIES TUNES AND BALANCES THE NEW VFS FRONT SUSPENSION WITH THE LEGENDARY V-RIDE REAR SUSPENSION**





## New Beginnings

**M**ost people consider spring as a time of transformation and starting fresh. For those of us in the automotive industry, it's fall that represents new beginnings because it's the time of year when we introduce our new lineup of motorhomes and work with our dealers to market and sell our coaches.

This fall marks another new venture for Tiffin Motorhomes. Starting with this issue, we are partnering with NPS Media Group to publish *Roughing It Smoothly*. NPS has been serving the publishing industry for more than 30 years with many of the behind-the-scenes work for print and digital magazine production, such as circulation management, newsstand sales, custom publishing, digital content delivery, direct mail, and online and retail promotions. Its staff of experts brings decades of publishing experience and know-how that will further advance *Roughing It Smoothly*.

We are excited about this new collaboration, but we want to assure you that the core message of the magazine remains the same. We will continue to strive to provide information to our readers about new motorhome models, great travel destinations, news about our Allegro Club and rallies, and more.

Based on a gentleman's handshake agreement between Fred Thompson and my grandfather, *Roughing It Smoothly* was born 20 years ago. At this time, I'd like to extend a big thank you to Fred for his years of service to the magazine. Safe travels, Fred!

We welcome any comments or questions you might have. Please contact us at [RoughingItSmoothlymag@outlook.com](mailto:RoughingItSmoothlymag@outlook.com).

Best,  
**Leigh Tiffin**  
President, Tiffin Motorhomes

**ROUGHING IT**  
Brought to You by  
Tiffin Motorhomes  
**Smoothly**<sup>®</sup>

**SUMMER/FALL 2023 · VOL. 20, NO. 3 & 4**

**Editor**

June Kikuchi  
[RoughingItSmoothlymag@outlook.com](mailto:RoughingItSmoothlymag@outlook.com)

**Art Director**

Cindy Kassebaum

**Publisher**

Mark Harris,  
NPS Media Group  
[mharris@npsmediagroup.com](mailto:mharris@npsmediagroup.com)

**Director of Magazine Operations**

Lisa Smith  
[lisa.smith@tiffinmotorhomes.com](mailto:lisa.smith@tiffinmotorhomes.com)

**Contributing Writers:**

Steve Blume, Carolyn Breinich,  
Kellie B. Gormly, Marissa Hernandez,  
Melissa L. Kauffman, Nicole Sipe,  
Lisa Smith, Kathryn Drury Wagner

---

*Roughing It Smoothly*<sup>®</sup> magazine (ISSN 2472-3770) is published four times a year by NPS Media Group for Tiffin Motorhomes, Inc., 105 2nd Street NW, Red Bay, Alabama 35582. NPS offices are located at 2 Enterprise Drive, Suite 420, Shelton CT 06484. Prsrt Std U.S. Postage Paid, Burl, VT 05401, Permit No. 19.

Copyright © 2023 by Tiffin Motorhomes. All rights reserved. *Roughing It Smoothly*<sup>®</sup> is a registered trademark of Tiffin Motorhomes, Inc. No part of this magazine may be reproduced in any form without the written permission of the publisher, editor and Tiffin Motorhomes, Inc.



*This issue's cover shows an Allegro RED 37 BA coach. A sister floorplan, the 33 AA, is featured inside. Photo courtesy of Tiffin Motorhomes.*

# table of contents

ROUGHING IT SMOOTHLY · VOL. 20, NO. 3 & 4



## Features

### **18 Phaeton 44 OH Finery**

Spoil yourself with the 2024 Phaeton line, which combines comfort and opulence.

### **24 Catch Waves into Surf City**

Enjoy the warm sun, soft sand and an endless list of activities in Huntington Beach, the quintessential California beach town.

### **40 Reliving History**

Travel back in time when you visit Gettysburg, the small Pennsylvania town that is synonymous with the Civil War.

### **48 Get Ahead with the Allegro RED 33 AA**

This smaller coach packs a wallop with a powerful engine, easy drivability and an abundance of luxurious features.

### **54 Start Your Engines**

Nature lovers, sports fans and everyone in between will fall for the charm of Indianapolis, a Midwestern gem.

### **66 Welcome to the Queen City**

Drive into adventure with these must-see places in Charlotte, North Carolina, a place filled with southern hospitality, style and fun.



# Premium AGM and Lithium Batteries



**The best batteries AND the best support**

**Premium AGM Batteries**  
 Unmatched reliability and performance  
 Built to handle rigorous U.S. military demands  
 Five year pro-rated warranty

**Premium Lithium Batteries**  
 Lifeline Lithium batteries outperform traditional lead-acid batteries used in RVs  
 LiFePO4 batteries can be depleted up to 100% with no damage or reduction in available power

**Your Partner for Life**  
 U.S. Family owned and operated  
 Over 40 years direct industry experience  
 Friendly and knowledgeable technical support

**Contact**  
 (909) 599-7816  
[www.lifelinebatteries.com](http://www.lifelinebatteries.com)



## Columns and Departments

- |  |  |
|--|--|
| <b>1 President's Corner</b>  | <b>32 Tiffin Rally Report</b><br>Lake Wales, Florida, was the perfect venue for the April rally. |
| <b>6 News You Can Use</b>  |  |
| <b>10 Wellness on the Road</b><br>Create a self-care space to nourish your inner spirit. | <b>62 Owner Profile</b><br>Travel with the Orioles on their global RV adventures.                |
| <b>14 Traveling with Pets</b><br>Pack these must-have pet gear for your dogs and cats.   | <b>74 Allegro Club News</b>  |
|  | <b>78 Tiffin Tech Talk</b>   |



**Towing  
Doesn't  
Have to be  
a Drag™**



## Tow Bars & Dinghy Tow Brakes

### Apollo • Ascent • Avail



- Patented non-binding latches quickly disconnect in any terrain
- Offset triple lugs for easy attachment to the baseplate
- No centering pin, easy to stow & store. Safety cables included
- Rubber boots protect from dirt & debris
- 3-year limited warranty



### Patriot Dinghy Tow Brake



- New smaller, lighter profile fits more vehicles
- No tank to drain, no pumps or hoses to connect
- Controller monitors braking & allows manual input
- Works with hybrids
- 2-year limited warranty

## RECALLS AND MORE

The information below is provided to make owners aware of safety recalls that may need to be completed on their motorhomes. Email [recalls@tiffinmotorhomes.com](mailto:recalls@tiffinmotorhomes.com) for questions about what recalls may apply to your motorhome.

**NHTSA Recall #21V-514, Tiffin Recall #WAY-100, Wayfarer valve stem or valve stem extenders may be damaged:** Tiffin Motorhomes has decided that a defect, which relates to motor vehicle safety, exists in certain models of Wayfarer motorhomes — **2017, 2018, 2019, 2020 and 2021 Wayfarers, all floorplans.** Specific Wayfarer motorhomes are equipped with a decorative wheel liner that may come into contact with the valve stem or the valve stem extender used on the tires of the motorhome. Repeated contact of a valve stem extender with a wheel liner may cause damage to the valve stem or the valve stem extender. If a valve stem or a valve stem extender is damaged, it can result in a loss of air pressure in the tire, which may increase the risk of a crash.

**NHTSA Recall #21V-610, Tiffin Recall #WAY-101, Wayfarer frame rail extension failure:** Tiffin Motorhomes has decided that a defect, which relates to motor vehicle safety, exists on the following models of Wayfarer motorhomes — **2017, 2018, 2019, 2020, 2021 and 2022 Wayfarers, all floorplans.** Owners must not tow or use the hitch under any circumstance until the recall repair has been completed. The hitch on Wayfarer motorhomes

may become loose from the frame of the motorhome. The area of the hitch attachment to the frame on the Wayfarer brand of motorhomes must be reinforced. If the hitch were to become loose or break away, this could cause a crash, which could lead to an injury.

**NHTSA Recall #21V-680, Tiffin Recall #TIF-118, sofa seat belt mounting points:** Tiffin Motorhomes has decided that a defect, which relates to motor vehicle safety, exists on the following models of motorhomes — **2018, 2019, 2020, 2021 and 2022 Allegro Open Roads; 2018, 2019, 2020, 2021 and 2022 Allegro REDs; 2018, 2019, 2020, 2021 and 2022 Allegro Breezes; 2018, 2019, 2020, 2021 and 2022 Allegro Buses; 2018, 2019, 2020, 2021 and 2022 Phaetons; and 2018, 2019, 2020, and 2021 Zephyrs that were built between January 3, 2017 and April 13, 2021.** Tiffin Motorhomes has become aware of the possibility that the sofa seat belts were not mounted correctly. In the event of an accident, passengers who are sitting on the sofa may not be properly secured in place with the current seat belt anchoring method, which may cause them injury. Until the repairs have been completed, do not use the sofa seating positions and seat belts during travel.

**NHTSA Recall #21V-753, Tiffin Recall #WAY-102, Wayfarer rear center water pan failure:** Tiffin Motorhomes has decided that a defect, which relates to motor vehicle safety, exists on the following models of Wayfarer motorhomes — **2018 24FW Wayfarers;**

**2019 24BW, 24FW, 24TW, 25QW and 25RW Wayfarers; 2020 24TW, 25QW and 25RW Wayfarers; 2021 25RW, 25SW and 25TW Wayfarers; and 2022 25RW, 25SW and 25TW Wayfarer motorhomes.** It has come to our attention that on certain Wayfarers, the area of attachment for the rear center water pan, which holds the rear center water holding tank in place, must be reinforced. If the area of attachment is not reinforced, the rear center water pan may become loose from the frame of the motorhome, which could cause the water holding tank to become loose or drop from the motorhome.

**NHTSA Recall #22V-068, Tiffin Recall #TIF-120, DCD panel torque and information label for 1200W inverters and DCD panel, buss bar, torque and information label for 2000W inverters:** Tiffin Motorhomes has decided that a defect, which relates to motor vehicle safety, exists on the following models of motorhomes — **2018, 2019, 2020, 2021 and 2022 Allegro Open Roads and Allegro Breezes built between February 23, 2017 and February 14, 2022, and equipped with a standard 1200W inverter or the optional 2000W inverter.** Tiffin Motorhomes has become aware of the possibility that the nuts on each side of the buss bar may not have the correct torque applied. If the torque is not correct, this could create elevated temperatures on the buss bar, which could lead to melting components on the DCD panel, and in some cases, the overheating of the DCD panel could increase the risk of a fire.



# *the Look of the Future*

*...in the RVs of today!*

Tiffin Motorhomes and HWH Corporation,  
decades long relationship in the RV Industry...

*Coincidence?*

*or*

**Engineering done right!**



**HWH<sup>®</sup> Room Extension Mechanisms**

**HWH<sup>®</sup> BI-AXIS<sup>®</sup> Hydraulic Leveling Systems and more.**

***Get the look and dependability  
you want...today.***



*Since 1967*

[www.HWH.com](http://www.HWH.com)

800-321-3494

**NHTSA Recall #22V-055, Tiffin Recall #TIF-121, sidewall mounted patio awning:** Tiffin Motorhomes has decided that a defect, which relates to motor vehicle safety, exists on the following models of motorhomes — **2020, 2021 and 2022 Allegro RED 360 37PA built between May 2, 2019 and January 4, 2022, and are equipped with a certain brand of sidewall mounted patio awnings.** Tiffin Motorhomes has become aware of the possibility that certain sidewall mounted patio awnings may not be securely fastened to the motorhome. If the awning is not securely attached, there is the possibility that it may detach from the sidewall of the motorhome, which could lead to an accident or personal injury.

**NHTSA Recall #22V-568, Tiffin Wayfarer Recall #WAY-103, Midas rear center marker light:** Tiffin Motorhomes has decided that certain **2022 Midas** motorhomes fail to conform to Federal Motor Vehicle Safety Standard No. 108, “Lamps, reflective devices, and associated equipment.” Tiffin Motorhomes has become aware of the possibility that on these motorhomes, the rear center marker light was left off, and the backup camera was put into the location for the rear center marker light. Not having the correct number of marker lights on the motorhome will impair the visibility of the motorhome to other drivers and may increase the risk of a crash.

**NHTSA Recall #22V-273, Tiffin Recall #TIF-122, defective slide-room cylinders:** Tiffin Motorhomes has decided that a defect, which relates to motor vehicle safety, exists on the following models of motorhomes — **2021 Allegro Open Roads 34PA and 36UA floorplan only; 2022 Allegro**

**Open Roads, all floorplans; and 2022 Allegro Bays, all floorplans.** Tiffin Motorhomes has become aware of the possibility that on these motorhomes, the hydraulic cylinder that moves certain slide-rooms may have a defective inner seal. If a hydraulic cylinder has a defective inner seal, it is possible that the slide-room could extend from the motorhome on its own — from 6 to 8 inches — while parked after non-use or, possibly, while in transit. Please note that there is an acceptable relaxation tolerance of .5 to 1 inch. This recall is for movement beyond this tolerance. A slide-room that extends unintentionally during transit can increase the risks of a crash.

**NHTSA Recall #22V-291, Tiffin Recall #TIF-123, Cahaba improper wiring and inverter installation:** Tiffin Motorhomes has decided that a defect, which relates to motor vehicle safety, exists in certain **2021 and 2022 Cahaba motorhomes, all floorplans.** Tiffin Motorhomes has become aware of the possibility that on these motorhomes, the 110-volt and 12-volt electrical system may be improperly installed, and that the inverter may not be secured. Improperly installed and unsecured electrical items may lead to a fire.

**NHTSA Recall #22V-511, Tiffin Recall #TIF-124, possible defective LP service valve:** Tiffin Motorhomes has decided that a defect, which relates to motor vehicle safety, exists on the following models of motorhomes — **2021, 2022 and 2023 Allegro Open Road; 2021, 2022 and 2023 Allegro RED 340; 2021 and 2022 Allegro RED 360; 2021 and 2022 Allegro Breeze; 2022 Allegro Bay; and 2021 and 2022 Phaeton Motorhomes, all equipped with the option for LP gas.** Tiffin Motorhomes

has become aware of the possibility that on these motorhomes, the LP gas tank may be equipped with a defective LP service valve. A leak in the connection of the LP tank installed on a motorhome could result in a fire or explosion as well as serious personal injury, property damage or both.

**NHTSA Recall #22V-589, Tiffin Recall #TIF-126, PowerGlide chassis 150-A circuit breaker:** Tiffin Motorhomes has decided that a defect, which relates to motor vehicle safety, exists in certain **2022 and 2023 Allegro Breeze; 2022 and 2023 Allegro Bus; 2022 and 2023 Phaeton; and 2022 Zephyr motorhomes, all built on Tiffin Motorhome’s PowerGlide chassis.** Tiffin Motorhomes has become aware of the possibility that on these motorhomes, the chassis’ 150-amp circuit breakers may overheat and trip. If this were to happen, the chassis would lose power, and the driver’s dash display would go blank. If the chassis were to lose power, this would increase the risk of a crash.

**NHTSA Recall #22V-814, Tiffin Recall #TIF-127, LPG regulator hose leak:** Tiffin Motorhomes has decided that a defect, which relates to motor vehicle safety, exists on the following models of motorhomes — **2023 Allegro (Open Road); 2023 Allegro RED 340; 2022 and 2023 Allegro RED 360; 2022 and 2023 Allegro Breeze; 2022 and 2023 Allegro Bay; and 2022 and 2023 Phaeton Motorhomes, all equipped with the option for LP gas and that were built between May 5, 2022 and October 21, 2022.** Tiffin Motorhomes has become aware of the possibility that on these motorhomes, the fitting on the

*Continued on page 80*

# LESS-LETHAL SELF-DEFENSE



STARTING AT  
**\$299.99**

- NOT CLASSIFIED AS A FIREARM
- NO BACKGROUND CHECKS
- NO PERMITS REQUIRED
- OVER 7,000 4.5 STAR REVIEWS
- INTERSTATE TRAVEL FRIENDLY



**BYRNA.COM**



Scan the QR code with your phone to see the new array of Byrna Pistol-Based Launchers for 2023

# Create a Self-Care Space

Make room for a place dedicated to nourishing your inner spirit.

BY KATHRYN DRURY WAGNER

**P**eople of a certain age might remember the Calgon commercial, “Take me away!” And yes, if you’re on the road adventuring in your Tiffin Motorhome, you’re already blissfully away. But here’s the thing: You’re still allowed to want (and need) some self-care time — aka alone time, me-time, recharging time or spiritual time. This is true even when you’re around people you love. Self-care is a chance to hit the reset button, connect with your inner guidance system, and emerge feeling calmer and refreshed.

At home, you likely have nurturing places and routines, whether it’s attending a worship service, strolling along a favorite nature trail or taking a weekly yoga class. Away from these grounding practices, you might feel a bit untethered or even cranky. That’s why setting up a designated spot for self-care within your living area is so vital.

Lately, “self-care corners” have been touted by many home design gurus. A self-care corner usually includes a comfy chair or sofa, a soft throw blanket, multiple plants and perhaps a cushion for meditation. This idea can be adapted for use in a smaller, even mobile, space. Your traveling personal sanctuary might be compact, but it’s still powerful. Here are all the elements you’ll need.

## LOCATION, LOCATION, LOCATION

First, determine where to locate your self-care zone. This is where you will stash your curated collection of relaxation necessities — without creating distracting visual clutter or hogging up room you need for other daily activities. Your relaxation zone can live inside a wardrobe drawer, in an under-bed storage, in a cabinet or in the dinette booth’s storage. The goal is simply to find a space where you can keep the essentials for fostering a sense of inner peace and quiet.

Next, make that space feel special. You could line the designated drawer or cabinet with deco-



SANDER SAMMY/UNSPLASH

**Find time and a space where you can engage in self-care even when you’re on the road.**

rative contact paper or removable wallpaper for a pop of cheerful color, which sends a message — “this space has special things” — whenever the self-care zone is accessed. Flameless votives add serenity and a realistic glow, without creating a fire hazard, and they are short enough that they can be easily shut inside a drawer. Or you could do LED fairy lights, to add a magical twinkle after you dim your overhead lights.

## SET THE MOOD

Next, consider what activities are most soothing to you, and provision accordingly. Will you be journaling? Meditating? Praying? Reading? Listening to affirmations or spa-style music? Many people, of course, mix and match several modes of self-care.

“It’s not just about **RVing**...  
it’s about what you do while you are RVing that counts!”

*Adventure Awaits*  
WE’LL TAKE YOU THERE...  
UNITED STATES | ALASKA | CANADA | OVERSEAS

Request your **FREE** RV Vacation Catalog  
CALL 936-327-3428 [ADVENTURECARAVANS.COM](http://ADVENTURECARAVANS.COM)





JESS BAILEY/PEXELS

**Regularly writing in a journal is relaxing and helps your mental well-being.**

To set the mood, try a portable, mini diffuser (200ml to 300ml models are a good size) and a small library of essential oils for aromatherapy. According to research, lavender has been proven to improve sleep quality, so it would be ideal for evening use. Clary sage, on the other hand, may help boost clarity and creativity, while earthier scents like sage are associated with purification and letting go. Frankincense has been used for centuries for prayer and healing. Whichever oils or blends of oils you choose, be sure to use them sparingly in your diffuser — just two to three drops. It's an excellent way to begin a session of meditation, contemplation or journaling.

Speaking of journaling, keeping a journal has both mental and physical benefits. In fact, journaling can help reduce anxiety, stress and depression, according to the University of Rochester Medical Center. Unlike a diary, which records daily events, journals help people see the bigger picture, identify stressors, engage in positive self-talk, become more creative and track goals.

There are many types of journals available: gratitude journals, nature journals, journals with writing prompts, wellness journals, journals designed to overcome burnout and more. Even a blank notepad will work.

Are you a tea lover? A little tin or basket with a selection of herbal teas like mint, chamomile, rose and chai, help create a spa-like atmosphere. Get further into a calm mindset with a large, artisan-style ceramic mug, ideal for wrapping your hands around.

While a self-care corner in a home might feature a fluffy blanket, a slimmer meditation shawl will work well when space is at a premium. Look for a generously sized, super-soft meditation shawl in a natural, breathable material like cotton or silk. Wrapping yourself up in a cozy shawl is a good visual reminder, too, that you are stepping away from the busy exterior world and checking in with your spiritual self. A small, round meditation or yoga pillow can support hips while sitting. Many of these pillows have little side handles for easy storage.

If you'll be reading during your me-time, stock a few books that inspire your quest for well-being, whether that is devotionals, books of affirmations, motivational classics or the latest best-selling self-help tome.

Lastly, if your self-care space includes an external spot, such as a tabletop or countertop, a live plant adds a touch of leafy serenity. Plants also reduce indoor pollutants, boost oxygen levels, and they add some humidity to the air. Choose a plant that thrives in fairly low lighting, such as a bamboo plant, philodendron or snake plant. Note: If you travel with a pet, double check to avoid any issues with toxicity before you select a plant.

## **YOUR SELF-CARE SCHEDULE**

How often you use your self-care space is up to you. However, based on research by Utah State University, you should aim for a 10- to 15-minute slot each day. Keep self-care "small, simple and achievable," it advises, and you're more likely to make it part of your daily routine.

Once you recharge in your self-care space, simply return everything to the storage area until your next self-care session. Hopefully, you'll feel rested, refreshed and ready for the next adventure. As Walt Whitman wrote, "Afoot and light-hearted I take to the open road. Healthy, free, the world before me." 🚶

---

*Kathryn Drury Wagner is a Savannah-based writer and editor. She is the author of two books and frequently writes about health and wellness for national publications.*



QUESTIONS ABOUT YOUR POWER?  
**CALL OUR TECH SPECIALISTS  
AT 855.292.2831**



# RELIABLE, POWERFUL LITHIUM RV BATTERIES.

- ✓ Trusted Products
- ✓ 10 Year Warranty



Today Is Someday

[battlebornbatteries.com](http://battlebornbatteries.com)

Follow us on social |  

# Go-To Pet Gear

Pack these 10 dog and cat products the next time you hit the road.

BY MELISSA L. KAUFFMAN

**M**y husband and I have traveled in our RV with our dogs and parrots for more than a decade. We've observed a variety of travel and campsite setups from our fellow RVers, always looking to uncover products that make "ruffing" it with pets easier. As someone who's been testing pet products for more than 25 years, I know that the right stuff makes a difference.

Browse through my list of favorite dog and cat products to find the ones that you and your fur family travelers might just like to take on the road.

## 7 TRAVEL PRODUCTS FOR DOGS ON THE GO

A whole long drawer under a dining bench in our RV stores our dogs' things. And there's more stored under the bed and in the closet. OK, I admit it, our dogs need a lot of things. I've used all of these products, and they have made the bring-along-in-the-RV cut.

**Dolce Moderno Food and Water Bowl Collection:** I learned pretty quickly to travel with multiple water dishes. You need one or two in the RV and one or two outside at your campsite. This way your dogs can access water whether they are inside or outside, and you don't have to keep moving the water bowl around. I use several of these Dolce Moderno bowls for water. Easy to clean, they are a great size for the large amounts of water your dog will go through, especially when they're hot and active. I love their cute and modern designs, and they're lightweight, too. Starts at \$7.49. (Check out the designs and more at [lovingpetsproducts.com](http://lovingpetsproducts.com).)



**Wondercide Flea & Tick Spray for Pets and Home with Natural Essential Oils:** No matter how big your RV is, it's still a small environment. For our home away from home, I like safe and holistic solutions because we all breathe it in. This plant-powered spray helps to repel, prevent and kill fleas and ticks. They come in four scents from essential oils: rosemary, peppermint, cedarwood and lemongrass. These sprays are strong-smelling, so pick the scent that's most pleasing to you. I tried and liked them all but picked the peppermint in the end. Safe for the house, cats and dogs, but always follow the directions when spraying directly on your pets. Starts at \$13.99 for a 4-oz. bottle. ([wondercide.com](http://wondercide.com))

**Ruffwear Swamp Cooler Cooling Dog Vest:** We've whisked our dogs off to some pretty hot places — the Florida Keys, Yellowstone National Park and cruising the Extraterrestrial Highway through Nevada. For hot road trips, a cooling vest like Ruffwear's plays a key role in keeping dogs cool, especially as they get older. The fabric itself reflects solar radiation. To activate the Swamp Cooler Tech, soak the vest in water, then put it on your dog, and he's ready to go. When the vest dries, just wet it again. Six sizes from XXS to





XL makes it easy to find one to fit your pup. Available in either Heliotrope Purple or Sage Green, the vest costs \$79.95. ([ruffwear.com](http://ruffwear.com))

**Boss Dog Tactical Nylon Dog Leash with Carabiner:** Boss Dog Brand ([bossnationbrands.com](http://bossnationbrands.com)) creates some serious leashes to withstand the camping and traveling lifestyle. I

love this 20-foot leash for several reasons: It comes in hunter orange, which makes it easy to spot at your campsite or in the woods; it's made of durable material that simplifies cleaning and air dries quickly (so no smelly dampness when you have to pack it); plus the sturdy carabiner and swivel clip keep it



**Appalachian Foothills**  
| RV PARK AND SERVICE CENTER |

**YOUR RV PAINT & BODY CONNECTION**

- RV Paint and Body Repair Specialists
- Insurance Claims and Personal Repair
- All Makes and Models
- Full Service RV Park with high speed WIFI on site
- Custom Cabinets, Paint, and all General Maintenance at one location
- Conveniently located just off I-22, Exit 30 in Winfield, AL

Set an appointment today  
(205) 430-2480 | [Christian@afrvpark.com](mailto:Christian@afrvpark.com)  
[www.afrvpark.com](http://www.afrvpark.com)

## 3 PURRFECT CAT TRAVEL PRODUCTS

Cats have come a long way from outdoor cats, to indoor and even travel cats. In fact, there's a new term for them – “adventure cats.” Yearning for something more, these cats rule the house even when the house is on wheels. Enjoy this quick list of on-the-road products that your kitty will pounce on.

**Sleepypod Martingale Walking Cat Harness:** Let's kick it off with this adjustable mesh walking harness for those adventure kitties that like to safely get outside on a leash. It wraps firmly around the cat, securing with a wide berth of Velcro so your pet can't get loose. You can adjust it for fit at your cat's neck and chest. These harnesses look stylish so be prepared for people to stop and ask where you got it (and admire your cat on a leash!). The harness is easy to wash in cold water, and just put it outside to dry. Comes in size large and lots of colors: Glacier Silver, Midnight Blue, Pink Peony, Jet Black and Strawberry Red. (Available for dogs, too.) Starts at \$39.59. ([sleepypod.com](http://sleepypod.com))



**Earthbath Hypoallergenic Cat Wipes:** Wipes make every traveler's essential must list. I've been using Earthbath's dog wipes for years and was happy to see that they now make some just for cats. Earthbath's cat wipes are fragrance free with mild cleansers so you can easily and quickly clean and freshen up your kitty. The wipes include Hawaiian awapuhi to condition your cat's coat and get it to shine, along with aloe vera and vitamin E. Each container has 100 wipes (for \$17), which is perfect for a road trip. Note: You should only use these wipes if your cat is over 6 weeks old. ([earthbath.com](http://earthbath.com))

**Kitty Sift Eco-Friendly Litter Box:** There's an easy solution to your cat's potty concerns when traveling in an RV – disposable litter boxes. Made of recycled cardboard, Kitty Sift litter boxes are durable and leak proof, plus they have a sifter so you clean the litter box in just 30 seconds. Just pour in your cat's favorite litter and watch him jump in. Throw out and replace the litter box every two or three weeks or as needed. I particularly like that Kitty Sift litter boxes come in a jumbo size, which makes it more comfortable for multiple cats, seniors or larger cats that need more room. The 5-pack large litter box costs \$27.99, the jumbo set is \$34.99. ([furhaven.com](http://furhaven.com))



attached and prevents tangles. We use it with our dogs at the campsite, allowing them to come in and out of the trailer as they wish or to safely hang out with us and enjoy the woods. Comes in .5- or 1-inch widths and costs \$43.99. (Buy at [chewy.com](http://chewy.com).)



**Pet Head Quick Fix Foam by Company of Animals:** Sometimes dogs need a bath when traveling (OK, more than sometimes), but we don't have lots of water and a tub handy. It's simple and easy to keep them clean with this Pet Head no-rinse deodorizing foam from Company of Animals ([companyofanimals.com/us](http://companyofanimals.com/us)). The peach scent smells great, too. I also use the Pet Head Quick Fix Wipes

and Quick Fix Spray (\$12.99 each) for easy grooming on the road. (Buy on [amazon.com](http://amazon.com).)

**Gou Gou Pets First Aid Ointment:** None of us should forget our first aid supplies, especially when camping. Gou Gou Pet's health

products combine ancient Chinese philosophies to create holistic formulas, and I've liked every one I've tried so far. Herbs are the secret ingredient in this first-aid ointment that relieves swelling, alleviates skin infections and supports both cat and dog immune systems. Starts at \$16.99. ([gougoupets.com](http://gougoupets.com))



**ZippyPaws Hot Sauce Crusherz / Pubasco:** No problem if your pup crushes this \$9.99 toy while you're on the road. Just replace the empty water bottle that goes inside the toy to get it back in fighting shape. The plush outside allows for lots of chewing and biting. I give these toys two paws up for repurposing plastic and having a reusable squeaky cap. ([zippypaws.com](http://zippypaws.com)). 🐾



At Bella Terra of Gulf Shores, we pride ourselves on creating truly unique upscale RV resort experiences for our owners and guests. Visit [BellaTerraRVresort.com](http://BellaTerraRVresort.com) or call 251-970-2370 to find out why we're rated one of the TOP RV RESORTS in the U.S.! Ask about our Lot Ownership Program, and also Stay and Play. As a rental guest and use TRP22 Code for a discount!

**BELLA TERRA**  
OF GULF SHORES  
101 Via Bella Terra, Foley, AL 36535  
f t y i p

# PHAETON 44 OH Finery

Spoil yourself with the 2024 Phaeton line, which combines comfort and opulence.

**T**he 2024 Phaeton line offers luxury on wheels. Powered by a robust Cummins L9 450-horsepower diesel engine with 1250 lb.-ft. torque, the Phaeton comes in four floorplans. The largest is the 44 OH, which measures 45 feet in length with approximately 440 square feet of space, which is about 8% to 15% longer and larger than the other floorplans.

Read on to find out why the Phaeton has spent more time as the No. 1 selling diesel Class A than any other brand!

## COMFORTABLE LIVING

Other 44 OH highlights include a raised rail chassis so everything is on one level, 1.5 baths, a quad slide, an electric overhead front bunk for more sleeping space, and an opulent bedroom/bath en suite with a king-size bed, dual sinks and a large shower. The dinette is on the patio awning side, so while eating or just hanging out, you can overlook your own area. A fun option is an outside grill — bring on the hotdogs and burgers!

The living area features ultraleather furniture for plenty of seating, a fireplace and a Truma hot-water system. The satellite receiver is ready to connect to either DISH or DirectTV, and there is a WiFi and cellular booster. Spyder panels on both sides of the bed means you never have to get out of your king-size bed





Behind the driver, you have the option of theater seating (as shown) or the standard 89-inch sofa bed. The passenger side features an 84-inch sofa bed.



**The Phaeton 44 OH comes with a memory-foam king bed, a shower that measures 28.5 x 40.5 inches and two porcelain sinks.**

to lock all the doors! Options include heated electric tile floors and a bedroom safe.

Climate control inside the coach is easy with the 15,000 BTU Extraordinaire air-conditioning system. Solar panels are optional and come with three or six panels (200 watts each). The fresh water and power cords have electric reels, making hookups easy and quick.

### **DRIVING EASE AND SAFETY FEATURES**

Driver comfort was top of mind in the Phaeton 44 OH's design. The seat and armrest can be adjusted in 24 different ways and in 1-inch increments to accommodate drivers of all sizes, and the coach features a tilt and telescoping steering wheel, as well as adjustable accelerator and brake pedals.

For driving ease, the Phaeton 44 OH features an all-digital dash that can change colors for drivers who are colorblind, windshield shades that provide safety from the sun, dash fans, a Kenwood radio with GPS, and a three-camera system that can be viewed at the same time. There's also an optional blind spot monitor.





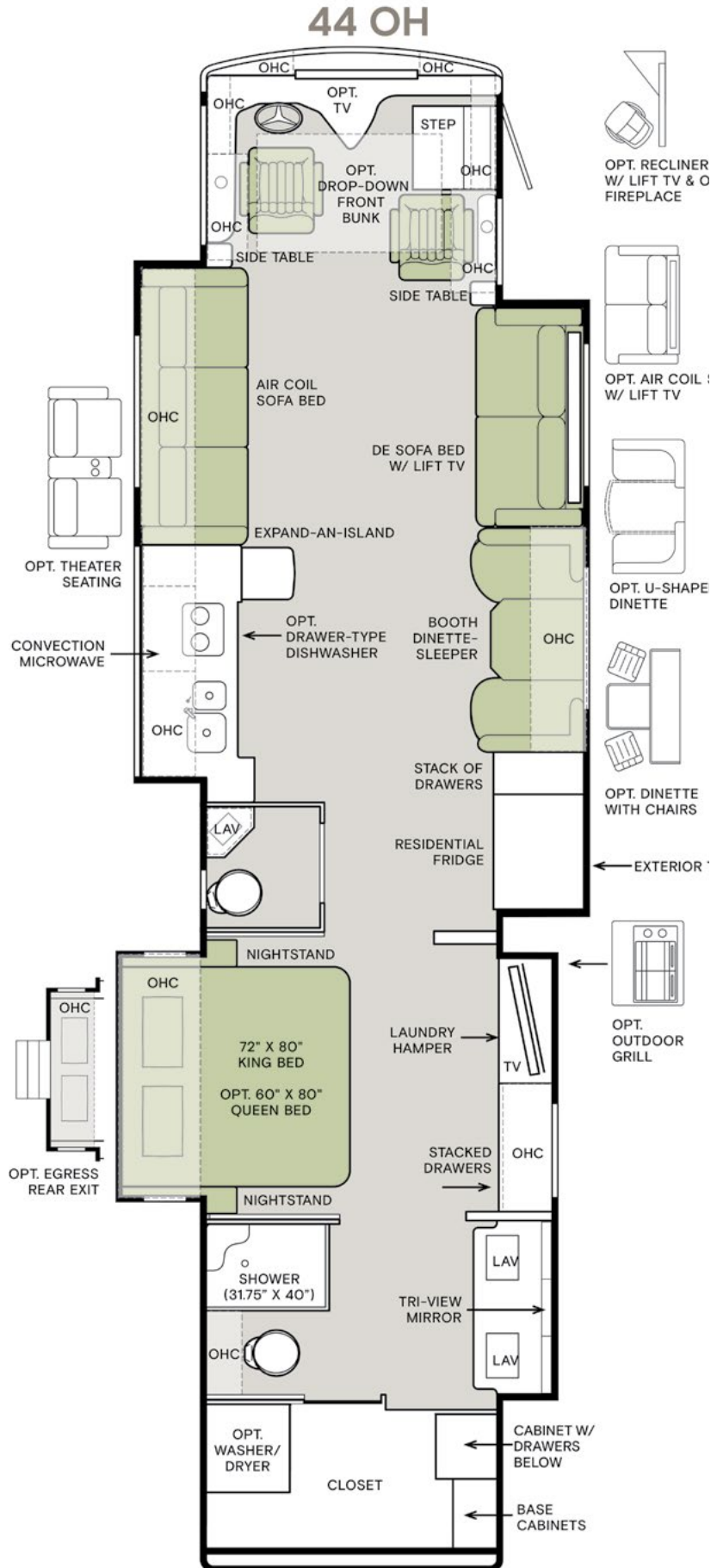
All Phaeton coaches come with a collision mitigation system (CMS), adaptive cruise control, electrical stability control, traction control and a tire pressure monitoring system (TPMS). Emergency egress is also available on all Phaetons, so you have easy exit in any emergency situation.

## DESIGN ELEMENTS

A new feature for 2024 is the front sway bar on a PowerGlide chassis. The front axle rating has increased to 15,660 lbs. Owners can choose between an LP gas or an all-electric coach.

The Phaeton line comes in eight exterior colors and two types of striping. You can also choose from three interior décors (Capri, Tide Pool and Stallion), five cabinet colors (Black Truffle, White Linen, Platinum, Sandstone and Shadow) and two flooring choices (Sweden Alps and Editorial Volakas) — all combinations exude modern elegance.

The Phaeton 44 OH is truly a lavish home on wheels. Enjoy the ride! 🚐



The kitchen area is roomy with a 25-cubic-foot refrigerator, a double bowl sink, a two-burner induction cooktop and a convection microwave. The dinette area can comfortably seat four.



## 2024 PHAETON 44 OH SPECIFICATIONS

**MSRP** \$503,993

### DIMENSIONS

Overall length (approx.) <sup>1</sup>	45'
Wheelbase <sup>2</sup>	310"
Overall width <sup>1</sup>	101"
Overall height	13' 3"
Minimum garage height	14'
Interior height	83"
Interior width	96"
Square footage (approx.) <sup>3</sup>	440
Basement storage (approx.)	232 cu.ft.

### WEIGHT LIMITS (in pounds)

GAWR — front	15,660
GAWR — tag axle	10,000
GAWR — rear	20,000
GVWR	45,660
Max. trailer weight <sup>4</sup> / Hitch rating	10,000
GCWR	55,660

### CAPACITIES (in gallons)

Fuel tank	100
DEF tank — PowerGlide® Chassis	10
DEF tank — Freightliner® Chassis	13
Fresh water and Grey water	100 each
Black water	55

### QUANTITIES

Number of Slideouts	4
Sleeping Capacity <sup>5</sup>	2 to 8
Sleeping Areas <sup>5</sup>	1 to 5
Seat Belts <sup>5</sup>	4 to 10
Seating Capacity <sup>5</sup>	7 to 12

<sup>1</sup> The approximated coach width and length does not include side view mirrors and rear ladders.

<sup>2</sup> On tag axle coaches, measurement is

taken from the center of the steer axle to the centerline between the drive and tag axle.

<sup>3</sup> Square footage calculated with the slide-outs fully extended.

<sup>4</sup> Maximum trailer weight is dependent on the loading and towing variables, which include the GVWR, GAWR and GCWR, as well as adequate trailer brakes.

<sup>5</sup> Dependent on furniture and dinette options.

**Standard Chassis and Drivetrain:** Cummins® L9 450-HP diesel engine with 1,250 lb.-ft. torque; two-wheel drive; Allison® 3000 MH 6-speed automatic transmission with lock-up torque converter; front and rear 295/80R 22.5 tires; custom-tuned Koni shock absorbers; (2) 12-volt flooded lead-acid chassis batteries; hydraulic leveling jacks with control panel; ZF independent front suspension; rear radiator; front disc brakes and rear drum brakes; full air brake system with automatic slack adjusters; three-stage compression brake; manual parking brake; driver and passenger side fuel fill; tire pressure monitoring; adaptive cruise control; automatic traction control; collision mitigation with forward warning and active braking; electronic stability control

**Standard Construction:** seamless one-piece gel-coat fiberglass molded roof cap; 5.25" formed roof insulation; tubular aluminum roof skeleton frames; Extraordinaire™ ducted air-cooling system; one-piece molded gel-coat fiberglass front and rear caps; steel cockpit overhead support frame; Crane® Composites Noble® Select all-composite exterior sidewalls; tubular aluminum wall

skeleton frames; high-performance thermal insulation in sidewalls; engineered wood sub-flooring; laminated elevated sub-flooring with 2.75" thick thermal insulation; steel basement construction; rust protective undercoating; extra storage Phaeton (XSH) chassis construction

**Standard Electrical:** Spyder controls multiplex system; Firefly Integrations Eclipse Module; centralized 10" Spyder System main monitor; passenger console Spyder System color touchscreen; interior entryway Spyder System color touchscreen; exterior Spyder System color touchscreen; additional Spyder color touchscreens throughout coach; hydronic heating & electronic appliance-equipped coach; 10.0-kilowatt Onan® quiet diesel generator; generator slide tray; 2,000-watt Pure Sine Wave inverter charger with auto-gen start and interior remote control; (3) 15,000-BTU low profile air conditioners with heat pumps and condensation drains; 50-amp shore power with powered retract reel; auxiliary solar port; energy management system; HD over-the-air antenna; park cable and ground satellite hook-up; prep for in-motion satellite; Blu-ray™ player; satellite receiver; 12-volt breaker panel; 12-volt disconnect switch; rotary disconnect switches for house batteries, chassis batteries and inverter; ground fault circuit interrupter (GFCI) outlets at galley, lavatories and sewer bay; 110-volt exterior receptacle; Surge Guard® transfer switch; USB receptacles throughout coach; (6) 6-volt 230-amp hours flooded lead-acid house batteries; Aqua-Hot 450D heat exchange





**The top-selling Phaeton line exudes luxury and elegance. For 2024, Tiffin offers four floorplans: the 35 CH, 37 BH (pictured here), 40 IH and 44 OH.**

**Standard Exterior:** full-body paint with (4) layers of clear coat; single-colored slide-out endwalls; high-performance protective film on front cap and select areas; Girard®-powered door awning and side-mounted powered patio awning with integrated LED lighting; Girard® manual window awning package; Girard® slide-out toppers; side-swinging exterior storage doors with gas shocks; lockable handles on compartment doors; motion-sensor lights in cargo bay; 120-volt and 12-volt outlets inside cargo bays; pass-through basement storage; charcoal carpet cargo walls; fiberglass reinforced plastic basement floor; frameless, dual-pane windows; exterior patio light; daytime running lights; docking lights; chrome power heated side-view mirrors with integrated cameras; exterior TV with soundbar; fast-charge USB ports within exterior TV compartment; lightweight entry door with integrated screen; deadbolt front entrance lock; lighted entry door grab handle; automatic stainless steel double-entry step; keyless entry system for front entrance and component doors; mud flaps; custom rock guard

**Standard Interior:** handcrafted overhead cabinetry; solid surface step well; powered step well cover; storage compartment within entry steps; recessed step well lighting; living area TV; solid surface galley countertop; treated carpet in slide-out floors; handcrafted slide-out fascia; soft touch vinyl ceiling; dimmable LED lighting; prep for washer and dryer; carbon monoxide detector; LPG leak detector; smoke detector; fire extinguisher;

solar and privacy shades; soft-closing drawers; powered roof vents; central vacuum system with VacPan® automatic dustpan; interior grab handle at entry door; egress windows throughout coach

**Standard Driver's Compartment:** Ultra-fabrics® Tottori power driver and passenger seats; dual driver and passenger seat armrests; swivel bases for driver and passenger seats; powered passenger seat footrest; integrated seat belts on driver and passenger seats; tilt and telescoping steering wheel with integrated controls; adjustable accelerator and brake pedals; wraparound dash with graphite accents; mounted dash fans; cupholders on driver and passenger side; digital dash cluster; (1) center storage drawer; generator start and stop rocker switch; USB dash receptacles; 12-volt dash receptacle; backlit dash rocker switches; passenger console wireless phone charger; driver and passenger map lights; one-piece panoramic windshield; single-motor intermittent windshield wipers; automatic LED headlights; side-view cameras; color back-up camera; 10" high-definition LED multichannel camera monitor; stereo with AM/FM radio, CD player and satellite radio; ceiling-mounted speakers; overhead cabinetry with wooden panel doors; auxiliary start switch; concealed air horn; manual opening driver-side window; solid, non-opening passenger side window; powered solar and privacy windshield shade; manual solar and privacy shades on side windows

**Standard Kitchen:** 25-cubic-foot stainless steel residential refrigerator with French

doors and bottom freezer; two-burner induction cooktop; manual release expand-an-island; 1.7-cubic-foot smart convection microwave with air fry; double bowl kitchen sink with single-lever faucet and pull-down sprayer; built-in soap dispenser; galley overhead cabinets with pull-out drawers; panoramic galley window; task lighting; toe kick lighting; full tile backsplash; solid surface galley countertop, sink and cooktop cover

**Standard Bedroom:** memory-foam king mattress; walk-in closet; under bed storage; bedside windows; overhead cabinets with headboard; bed comforter with throw pillows; handcrafted privacy door; LED reading lights; nightstand with solid surface tops; mounted bedroom TV; centralized entertainment center; ceiling fan; laundry hamper

**Standard Bathroom:** (1) bathroom and (1) half bathroom; (2) porcelain master bedroom sinks; one-piece molded fiberglass shower (28.5 x 40.5"); (1) gravity flush toilet and (1) macerator toilet; medicine cabinet with tri-view vanity mirror; solid surface lavatory top; handheld shower head with slide bar; shower skylight; shower LED light with sliding cover; towel and toilet paper holders; roof vent fan; base cabinet

**Standard Driver's Side Furniture:** 89" air coil sofa bed

**Standard Passenger's Side Dinette and Furniture:** 75" booth dinette-sleeper; 84" DE sofa bed with lift TV

**DESTINATION: HUNTINGTON BEACH**

# Catch Waves into *Surf City*

Enjoy the warm sun, soft sand, rolling waves and an endless list of activities at Huntington Beach, the quintessential California beach town.

**BY MARISSA HERNANDEZ**





PIERRE SALADIN/UNSPLOASH

**I**t's blue and 72 (degrees) almost year-round at Huntington Beach, a Southern California coastal town with wide stretches of beaches tucked between Los Angeles and San Diego. Also known as Surf City USA, Huntington Beach has everything a quintessential beach city has to offer: sandy beaches with dozens of fire pits, a diverse food and beverage scene, tons of shopping, a vibrant downtown area and endless activities for people of all ages to enjoy.

Locals call the city "HB" and tout the area for being the center of surfing and surfing culture in SoCal. And who can argue with them? There's the Surfing Walk of Fame, the Huntington Beach International Surfing Museum, a bronze statue of surfing legend Duke Kahanamoku, and most importantly, waves that surfers of all levels can enjoy.

As one of the larger beach cities, Huntington Beach is a popular tourist destination. According to the city's website, more than 11 million people visit the area each year. The charming beach town offers a juxtaposition of the casual, relaxed and local lifestyle with new and modern experiences.

Here's my list of the most notable must-sees when visiting Surf City USA.

## **HUNTINGTON BEACH PIER AND SURROUNDING AREA**

You've seen it in just about every picture of Huntington Beach — the extended dock that sits over the Pacific Ocean surrounded by waves, surfers, swimmers and onlookers alike. Starting at the intersection of Main Street and Pacific Coast Highway, the **Huntington Beach Pier** is 1,850 feet long, making it one of the longest piers on the West Coast.

Head over to the pier for a nice, breezy stroll and catch a front-row seat to a number of friendly surfing competitions in the ocean below. Most people associate the pier with the Ruby's Diner that sat at the very end of it, but sadly, it closed in 2021. However, plans are underway to make the space a seafood restaurant in the near future. Stay tuned!

Adjacent and underneath the pier (on the land side) is the Pier Plaza. On weekends, you can find various live music and performances with a beach backdrop and a grassy area where you can picnic. Every Friday and on select weekends from 10 a.m. to sunset is the Pier Plaza Art A-Faire, where local artists showcase and sell their creations, ranging from paintings, photography, jewelry, home décor, and other arts and crafts.



TRAVEL HAPPY RV RENTALS/JUNSPASH

**Huntington Beach is known for its surfing and sandy beaches, and visitors to this laid-back beach town are never disappointed!**

325 Pacific Coast Highway; 714-377-5691; [www.surfcityusa.com/things-to-do/attractions/huntington-beach-pier/](http://www.surfcityusa.com/things-to-do/attractions/huntington-beach-pier/). Admission is free; open from 5 a.m. to midnight.

### **DOWNTOWN HUNTINGTON BEACH AND MAIN STREET**

After walking the pier, cross over to **Downtown Huntington Beach**, which spans several blocks between Main Street and 5th Street, all the way east to Orange Avenue. Downtown offers an array of shops, eateries, bars and other attractions. Get a T-shirt or a wetsuit at **Jack's Surfboards** (101 Main St.) or **Huntington Surf & Sport** (300 Pacific Coast Highway).

Indulge in a traditional breakfast at the iconic **Sugar Shack Café** (213½ Main St.) or hop on next door to **No Ka Oi** (215 Main St.) for a Hawaiian-style breakfast. For lunch and dinner, the options are endless, including **Fred's Mexican Café and Cantina** (300 Pacific Coast Highway, #201), **Sushi on Fire** (301 Main St., #103), **Wahoo's Fish Tacos** (120 Main St.) or **BLK Earth Sea Spirits** (300 Pacific Coast Highway, #202).

For libations, grab a beer at **Huntington Beach Beer Company** (201 Main St., Suite E) or **Four Sons Brewing** (18421 Gothard St., #100),

share a Shark Attack bucket at **Baja Sharkeez** (211 Main St.), or slurp on a fun, rainbow-colored slushy at **Aloha Grill** (221 Main St., Suite F).

If you're interested in surfing, visit the **Huntington Beach International Surfing**

## ***THE WORLD'S BIGGEST SURFING COMPETITION***

Where else would the U.S. Open of Surfing, the biggest surfing competition in the world, take place? At Surf City USA, of course! Since 1959, Huntington Beach has hosted the eight-day event, which draws crowds of nearly half a million people each year.

The U.S. Open, sponsored by the World Surf League, is typically held at the end of July/early August and includes surfing competitions for both men and women. A notable feature is the Longboard Classic, where surfers compete on longboards instead of the modern-day short boards.

In addition to surfing, there are motocross and skateboarding competitions, an array of food trucks, brand booths and product launches paired with free giveaways, the **Surfers Walk of Fame** induction, and daily concerts and live music. ([www.surfcityusa.com/events/annual-events-festivals/us-open-of-surfing/](http://www.surfcityusa.com/events/annual-events-festivals/us-open-of-surfing/))



SUNFLOWERMOMMA/SHUTTERSTOCK

Nature lovers can spend hours at the Bolsa Chica Ecological Reserve (above), spotting birds like the Great Blue Heron. The iconic statue of Duke Kahanamoku (right) stands at the heart of Downtown Huntington Beach.



STEVE CUKROV/SHUTTERSTOCK

**Museum** (411 Olive St.) and check out old photos, vintage surfboards and other accounts of surfing in the USA.

If you happen to be in Downtown HB on a Tuesday night, you can experience the **Surf City Nights Certified Farmers Market**. From 5 to 9 p.m., Main Street is shut down and lined with various booths of local merchants, offering produce, flowers, baked goods, handmade items and more. There's also live entertainment and music throughout the night.

### **BOLSA CHICA STATE BEACH AND DOG BEACH**

Located on the north side of the pier, **Bolsa Chica State Beach** is one of the most popular state beaches in the area. It extends from Warner Avenue to Seapoint Avenue along Pacific Coast Highway and is best known for its stretches of sand, shallow breaks and desirable waves. Bolsa Chica also has 200 fire rings, perfect for an evening bonfire.

Along the sand is an 8.5-mile paved walkway for biking, walking, running or roller blading. You can even rent pedal bikes/quadricycles. There are also picnic tables, showers, restrooms and snack shops scattered along the path.

For an adults-only experience, visit **SeaLegs on the Beach**, located on the north end of Bolsa Chica State Beach. This outdoor restaurant and lounge has live music on the weekends and the option to rent private fire pits and cabanas.

While dogs are not allowed on the sand at any state or city beach, in between Bolsa Chica State Beach and Huntington City Beach, there is a 1.5-mile stretch specifically for our four-legged friends. **Huntington Dog Beach** ([www.dogbeach.org/](http://www.dogbeach.org/)) has an “off leash optional” policy, where dogs can run free along the sand and in the ocean. It’s located between Goldenwest Street and Seapoint Street on Pacific Coast Highway with metered street parking (\$2/hour).

17851 Pacific Coast Highway; [www.parks.ca.gov/?page\\_id=642](http://www.parks.ca.gov/?page_id=642). Open 6 a.m. to 10 p.m. Standard vehicle day use is \$15; Saturdays and Sundays from Memorial Day to Labor Day, \$20.

### **BOLSA CHICA ECOLOGICAL RESERVE**

Nature enthusiasts flock to the **Bolsa Chica Ecological Reserve**, also known as the “Wetlands.” This 1,300-acre marshland habitat along Pacific Coast Highway is located across the street from the entrance to Bolsa Chica State Beach. According to the California Department of Fish and Wildlife, nearly 200 bird species, including the endangered Ridgeway’s rail, stop over or reside at the Wetlands. There are 5 miles of trails that offer great birdwatching as you explore the mudflats, coastal dunes, nesting islands and open water.

You can request a guided tour of the wetlands offered by different conservation groups or visit the **Wetlands Interpretive Center** for more information on the wildlife and history of Bolsa Chica, and how you can help to preserve this sacred habitat. The center also has aquariums, reptiles, taxidermy displays and other exhibits to dive into.

18000 Pacific Coast Highway; 714-846-1114; [wildlife.ca.gov/Lands/Places-to-Visit/Bolsa-Chica-ER](http://wildlife.ca.gov/Lands/Places-to-Visit/Bolsa-Chica-ER). Admission is free; open 5 a.m. to midnight.

### **PACIFIC CITY**

The newest addition to the list of Huntington Beach must-sees is **Pacific City**, a premier outdoor retail center just south of Downtown. Here

## *LAIID-BACK EATERIES*

**Hawaiian Flair:** Named after Duke Kahanamoku, the Olympic swimming gold medalist responsible for introducing surfing to Huntington Beach (and the mainland in general), **Duke’s Huntington Beach** offers Hawaiian-inspired dishes with a mix of Asian and California flare. This beachside restaurant is heavy on seafood options —some of my favorites are the Crispy Coconut Shrimp appetizer, the Seafood Hot Pot and Sautéed Macnut & Herb Crusted Fresh Fish. You absolutely must try the famous Hula Pie for dessert (chocolate cookie crust, macadamia nut ice cream, hot fudge, toasted mac nuts, topped with whipped cream). Entrees are in the mid-to-upper price range (\$35-\$55), but for a more casual dining experience, go to the **Barefoot Bar**, which is adjacent to the restaurant. Indulge in the best burger in all of HB: Duke’s Classic Burger. (317 Pacific Coast Highway; 714-374-6446; [www.dukeshuntington.com/](http://www.dukeshuntington.com/))

**Join the Breakfast Club:** Another HB classic is **The Sugar Shack Café** on Main Street— just look for the swarms of people waiting to experience the best breakfast in town. Family owned since it opened in 1967, the café offers American breakfast classics, including breakfast burritos and benedicts. If you have a sweet tooth, the French toast made with raisin toast is a must. Entrees cost around \$15 to \$20. Lunch options are also available, but breakfast is served all day. (213½ Main Street; 714-536-0355; [hbsugarshack.com/](http://hbsugarshack.com/))

**A Roaring Hotspot:** A newer addition — **Bear Flag Fish Co.** — has already cemented itself as a local hot spot. Located in the Pacific City retail center, its menu has some of the freshest fish with a view of where it came from. The menu is all things seafood: clam chowder, sushi, fish and chips, and poke. You can’t go wrong with the burrito option and bluefin tuna. Bear Flag’s poke and ceviche are phenomenal. (21058 Pacific Coast Highway, #124; 714-374-0558; [bearflagfishco.com](http://bearflagfishco.com))



THE IMAGE PARTY/SHUTTERSTOCK

Shop, eat and relax at Pacific City, a new outdoor retail center in Huntington Beach.



RUBEN RAMIREZ/UNSPUSH

## RV PARKS IN HB

**Huntington Beach RV Campground:** Located south of the pier, the Huntington Beach RV Campground is the closest to Downtown and Pacific City. It offers beachfront camping for motorhomes that are no more than 30 feet in length. There are also spots for RVs that are 45 feet long (that are not along the beach). Each site has water and electricity available and the fire pits on the beach are accessible from the campground. (20903 Pacific Coast Highway; 714-536-5281; [www.hbrv.org/](http://www.hbrv.org/). Open from September 5 to May 31. Sunday–Thursday cost \$75 per night; Friday–Saturday, \$100 per night; holidays, \$100 per night.)

**Bolsa Chica State Beach RV Camping:** Along the north end of Huntington Beach, you'll find Bolsa Chica State Beach RV Camping, which has 50 campsites with electric and water hookups. It has spaces for up to 40-foot motorhomes and offers picnic tables, outdoor showers and fire pits. (17851 Pacific Coast Highway; 800-444-7275; [www.surfcityusa.com/listing/bolsa-chica-state-beach-rv-camping/676/](http://www.surfcityusa.com/listing/bolsa-chica-state-beach-rv-camping/676/). Starts at \$50/night depending on the season and location.)

**Waterfront RV Park:** This site has 90 spots with hookups and can accommodate RVs up to 45 feet in length. Located across the street from Huntington State Beach, Waterfront RV Park has a clubhouse, dog park, game room, swimming pool and a spa. (21871 Newland Street; 714-536-8316; [www.hometownamerica.com/WaterFront](http://www.hometownamerica.com/WaterFront). Costs range from \$90–\$150/night depending on the location.)

you'll find an eclectic mix of restaurants, shops and experiences. Among the list of retailers are **Lululemon, Sephora, H&M, Free People** and **Tommy Bahama**. Restaurants include **Lemonade, Kai Modern Japanese Bistro, Ola Mexican Kitchen** and **The Brant Kitchen + Bar**. For a day of pampering, visit **FacialWorks, Dry Bar** and the **Holly and Hudson Nail Lounge**.

On the south end of the retail center is **Lot579**, a “modern food hall” that highlights the California culinary scene and includes **Bear Flag Fish Co., Hans Homemade Ice Cream** and **Popbar**.

For experiences, visit **Playground**, an interactive, 9-hole indoor mini golf course. There is also a golf simulator to show off your best swing. Or, relax at **The Bungalow**, a laid-back lounge that imitates a boho-chic chalet. On the weekends, enjoy listening to various DJs and signature cocktails. Good vibes all around.

21010 Pacific Coast Highway; 714-930-2345; [www.gopacificcity.com/](http://www.gopacificcity.com/). Open 10 a.m. to 9 p.m. Parking fee is \$8/hour; \$40 max/day (validation provided at retailers). 🚗

---

Marissa Hernandez is a freelance writer and author of two educational books, “Spectacular Sports: Baseball” and “The Wright Brothers.” She also served as a news writer at iHeart Media, writing for its 24/7 News Network that reaches more than 800 radio stations across the country. She was raised in Surf City USA and attended Marina High School.





# SnapPad<sup>®</sup> GET OUT THERE.



**Simply Attach RV SnapPads To Your Leveling  
Jacks & Enjoy a Lifetime of Benefits:**



No more placing or retrieving jack pads when leveling.



Long-lasting, durable rubber designed to withstand the elements.



Enhanced protection and stability for each leveling foot.



Environmentally friendly, made in the USA from recycled tires.

If you're ready to spend less time under your rig, and more time enjoying life on the road, scan the QR Code to find the perfect set of SnapPads for you!

Follow us on social media



# The Sunshine State Shines

The April 2023 Tiffin rally at Lake Wales, Florida, was a huge hit thanks to meticulous planning, camaraderie and the perfect RV resort.

ARTICLE AND PHOTOS BY STEVE BLUME

**L**ike kids waiting for Christmas, Tiffin owners across America must have felt like the spring rally would never get here. This rally would be different. Over 90% had never been to a Tiffin rally, so the anticipation was off the charts. April in sunny Florida at a premier RV resort near Lake Wales, which is about 60 miles east of Tampa — what better way to transition from winter!

With vision, planning and a little luck, the Tiffin Allegro Club, the official organization of Tiffin owners, landed at this incredible location with the capacity to accommodate 350 coaches in large full hookup sites plus all the other meeting and exhibition spaces. It was perfect.

Driving in, we passed under a massive wooden structure that traversed a wide avenue and followed the ribbon of road that meandered between serene ponds. We came upon the first group of orange-clad volunteers who were huddled in the middle of the road. They greeted us with a big and genuine, “Welcome! So glad you are here!”

Once our registration was verified, we continued down the road to the next group of orange angels then another that pointed us to our site and perfectly guided us in. Having 350 Tiffin motorhomes arriving within a short time frame is quite a feat, but everything was so well orchestrated. They made it seem simple!



PHOTO COURTESY OF TIFFIN MOTORHOMES

This aerial view of the Resort at Canopy Oaks showcases the size and scope of the park's amenities.



Join Us at  
SuperShow

January 17 - 21, 2024

Florida State  
Fair Grounds

Inside Supplier  
Building A / #A-12

# COMFORT THAT WILL FLOOR YOU.



Nothing delivers warmth and comfort in a coach like electric radiant floors. The clean, quiet heat envelops the cabin and everyone inside, creating a luxurious and inviting retreat.

- Warmth from floor to core
- No more cold tile
- No circulation of dust, pet fur, or other allergens
- Protects resale value
- Quiet, maintenance-free operation

Learn more at [goldheat.com](http://goldheat.com)  
or 503.848.6190.

## AVAILABLE IN THESE TIFFIN MODELS:

- Allegro Red 360
- Phaeton
- Allegro Bus
- Zephyr



EXPLORE MORE



**The Suncoast Allegro Club was one of the local clubs that hosted a meet-and-greet to discuss the benefits of joining an owners club.**

## **NEW LOCATION, NEW REGISTRATION PROCESS**

The Resort at Canopy Oaks is part of the Sunlight Resorts. It is one of Florida's newest, contemporary RV resorts, which opened its gates to guests in December 2020. Signature features of this lush, 435-acre property include oversized sites, concrete pads, a 12,000-square-foot clubhouse, onsite general store, deli, hair salon, full-service tiki bar and resort-style swimming pool.

At the helm of planning the rally was Lisa Smith, the new president of the Tiffin Allegro Club. "Surveys came back last summer that our planned location in another state didn't meet the expectations required for hosting a rally, so we went into high gear to find other options," Smith said. "The Resort at Canopy Oaks was pretty new and had just come across my desk for a future rally location. Why not? I picked up the phone and together we made it happen!"

The registration process was also different from prior ones. "Our goal was to open up the rally experience to more people, to make it fairer," Smith said. "Our last rally sold out in minutes. Rather than fill the slots with the fastest typists and most tech savvy owners, we had everyone register over a few hours using a lottery process to randomly select attendees with their Allegro Club membership number being

the unique identifier. Those chosen were given a specific time frame to finalize their registration and pay for the rally while the remainder went on a waitlist. Through non-registrations and cancellations, we continued to offer spots from the waitlist right up until the rally started. We learned a lot and will continue to improve our selection process going forward."

## **CONNECTING BEFOREHAND**

The prelude to the rally started with a new Facebook group called the "April 2023, Lake Wales, FL Tiffin Rally" where vendors and attendees could virtually meet, coordinate and share information. New members immediately began sharing their names, photos of themselves, pets and best of all, their Tiffin motorhome. One big benefit for a lucky few was the timing and location, perfect for the snowbirds wintering in Florida and about to head back north.

With so many rally first-timers, there were many questions. How does this work, where do we go, what is there to do? Meet-up planning started immediately in the Facebook group.

Ed Strobel, a guitar-playing singer, asked, "Any fireside musicians out there who want to jam?"

Roy Camara wasted no time in lining up multiple tee times over three days with an open invitation to join him.

# ESCAPE INTO YOUR NEXT ADVENTURE



- 2-3 Hour Installation:**  
*As easy as changing your oil*
- Tow-Mode Detection:**  
*No daily user setup*
- Instant Feedback:**  
*7" display to monitor braking*

**RVibrake**  
**SHADOW**  
installed braking system



## Other great flat towing products:



**Towed Battery  
Charger** +



**RVibrake 3**  
portable braking system



**Tire Patrol**  
tire pressure monitoring system

Choose your braking system for flat towing and get **instant braking assistance, a simple setup, and protection** for your family.



**SHOP**

800-815-2159 | [shoprvi.com](http://shoprvi.com)



Volunteers (far right) flawlessly and quickly parked 350 coaches with little waiting. Rally participants enjoyed cuteness overload at the pet parade.



### MONDAY KICKOFF — SHARE THE LOVE

The definition of the word “rally” is “a large public meeting that is held in order to show support for something.” All it takes is a casual conversation with a random stranger to understand that Tiffin love is personal. We have all invested huge dollars into something we never imagined we could afford and spent wisely on the best quality we could find — a Tiffin motorhome. We all just want to share our love with other like-minded folks, and a rally is the perfect venue for that.

Although the official kickoff meeting was at 6 p.m. on Monday, owners were ready to get going. A morning drizzle greeted the first brave souls who ventured out to the pop-up Tiffin merchandise store in the clubhouse to grab logo shirts, hats and other trinkets.

This was also the first morning when all those beautiful new rigs were unlocked, and I couldn't wait to see them. As the Diamond Sponsor of the rally, Lazydays RV had 35 Tiffin motorhomes parked nose to tail, from the new Class B Midas all the way up to the Allegro Bus. As I stepped up into an Allegro Bus, I was greeted by Tiffin's founder, who

warmly said, “Hi, I'm Bob Tiffin. I'm so glad you could make it!”

Bob's name is on everything here, and you can tell that he takes it personal. In his opening comments later in the day, he said, “Our business depends on you buying our motorhomes. When I look out here at the 350 coaches registered and how much that represents in our revenue, well, I need a calculator for that!”

Several local chapters of the Tiffin Allegro Club held a meet and greet that provided owners the opportunity to learn about the benefits of belonging. Nanci Lutz with the Suncoast Allegro Club in Florida said, “You don't have to live here to be in our group, you just need to want to travel and hang out with all our great people. We plan lots of rallies in the state, and an occasional one outside. To keep everyone involved, we ask each member to host or co-host one every year or so.”

I heard the exact same thing from John and Connie Knutsson, who came here with seven other coaches from their Alabama chapter. It's simple math, according to John, “Our membership is \$35 per year, and we have seven planned chapter trips, so that is only \$4 for each one.”

A buy/sell/trade hour enabled owners to shed or pick up a variety of no-longer-needed items. Brian Thorpe said, “We purchased a new electric 3-wheel bike at the show, and as I was opening the door to bring in my used e-bike to sell, someone stopped me and bought it before I even rolled it in.”

“The Island” is exactly that, a sandy island with a massive tiki hut, a smaller one across from it for entertainment, and space in between for people to set up chairs. This

## JOIN THE CLUB!

Tiffin Allegro Club members are eligible to participate in local chapters across the country, have the opportunity to attend Tiffin rallies, and receive discounted rates from vendors offering RV-related products and services. For more information, go to [tiffinmotorhomes.com/allegro-club](http://tiffinmotorhomes.com/allegro-club).

# Simply Better No Matter Where the Day Leads



Truma AquaGo

The Truma AquaGo instant hot water heater allows you to experience the luxury of an at-home shower in the comfort of your RV. Enjoy instant, constant, and endless hot water anywhere, anytime.



[truma.net](http://truma.net)





The Jeep course was full of climbs, dips and soft sand.

was the center of all outdoor events, and the perfect place for Tiffin President Leigh Tiffin to officially kick off the rally with welcoming comments and thanks to attendees, employees and volunteers. No large Tiffin gathering would be complete without a few words from Bob Tiffin, and he did not disappoint us. A band played each night, so many folks stayed and danced under the stars.

## SEMINARS AND ACTIVITIES

With the rain gone, Tuesday morning pickleball players were out early to get a few games in before the 9 a.m. seminars. Electric bikes and golf carts quickly filled the streets, with owners heading first for the grab-and-go continental breakfast then to the large open seminar tents. There was something for everyone, including sessions on Freightliner, Diamond Shield, Liquidspring, Aqua-hot, Dometic, audio and video electronics, RVing to Alaska and even an acrylic poured painting class in the arts and crafts building.


The highly anticipated veterans' parade was patriotic, colorful and fun. Veterans marched behind a banner proclaiming "In honor of all who served, thank you for your service." Lisa Smith drove a golf cart with a large POW/MIA flag, which held a very personal connection. "Freedom is not free," she said. "My grandfather and uncle were POWs, and several of my family members are veterans."

Wednesday was filled with more seminars. Onan, Valid Air leveling, Allison Transmissions, Cummins Diesel Engines, Tiffin Powerglide Chassis and Magne Shade attracted owners wanting to improve their knowledge base. It was also a designated day to recognize Bob and Judy Tiffin. Bob is a serious collector of antique cars, so the Central Florida Street Rod Association brought 15 of their finest antique and vintage cars, including a Corvette, Thunderbird, Nova and even a Gremlin. Peeking inside some of these sure took me back in time.

The invitation to Tea Time With Judy Tiffin read: "A little cup of friendship certainly goes a long way, especially on Judy's special day. Wear a hat made of ribbon and bows, adorn yourself with pearls and a rose."

Attendees were also asked to bring their own special cup along with its special memory or story. The ladies responded with vibrant dresses and crazy hats, daintily playing with those cups until their turn came around. The happy chatter filled the room. According to Peggy Simon, "We had a lot of female bonding going on with those stories."

On Thursday, information continued to flow throughout the day with presentations on Freightliner Custom Chassis, Southwire, suspension, steering,




**Choice**  
life is all about choice

Choice in color, fabric, style.  
Manual or motorized.  
Degree of privacy.  
Smart phone or Amazon Alexa control.



The choice is yours!  
Choose AMS, the preferred choice for privacy and solar protection for your motorhome.



www.automotionshade.com  
"Affordable Innovation"



Spyder, fire protection, RV electrical systems, RV driving tips, vents care, tank cleaning and tire safety.

Jeep is the No. 1 tow vehicle for many reasons, and there were lots of them here. RIGGIN'IT Trail Rides set up a course around the property with climbs, dips and soft sand. Signs pointed an easy route that went around obstacles and a hard one that took thrill-seekers through obstacles. This was a huge hit throughout the day.

If you didn't know better, you would swear every Tiffin motorhome came with some type of fur baby. There was cuteness overload as the pet parade, which gave owners a chance to dress up their pets. The crowd applauded as the big dogs and little dogs — and one lone cat! — singles and doubles of every breed walked an imaginary runway beside the tiki hut.

Another fun activity was an airboat tour. According to Clarence Bowser, a first-timer from Spartanburg, South Carolina, "The Grape Hammock airboat tour was something special, with all types of birds, turkeys, buffalo and deer. We even saw a bald eagle."

### TIFFIN'S TOP-NOTCH SERVICE

Owners raved about the incredible service techs who would come to your coach for 30 minutes at a time — at no charge — to fix anything within their ability. I chose to have them troubleshoot my Dish satellite and change the soundbar connection so I could control it with the TV remote, improving the mount along the way.

While at the rally, you could schedule services like mobile detailing, tank flushing, annual Aqua Hot service, and tow bar inspection and maintenance. Owners quickly filled those scheduled slots.

With so many rally rookies here, most would agree this one exceed-

ed all expectations. The resort was beautiful and well-maintained. Each day was filled with educational and technical support opportunities as well as entertainment and events. We all drooled over the 35 new coaches as well as the many products available to support our lifestyle. There were convenient onsite services and tasty food options.

Most attendees agreed that this rally was about as good as it gets, and they can't wait to sign up for the next one. 🚐

Steve Blume first lives it then colorfully tells about it, especially his passion for the RV lifestyle. A retired entrepreneur, he and his wife, Nancy, spend half the year on the road and the other half at their Brentwood, Tennessee, home. His articles have appeared in newspapers and magazines on multiple topics.

**Unlimited ADVENTURE**

**Aqua-Hot®**  
An AIRXCEL Brand

**Comfort Heating Systems**

**Unlimited Comfort. Unlimited Adventure.**

The 125 Series hydronic heating system is now **STANDARD** equipment on **The Convoy and Bronze Class B Vans by Tiffin!**

Visit [AquaHot.com](http://AquaHot.com) to learn more about why the 125 Series is the ultimate choice for Class B owners!

© Aqua-Hot, Coleman/Mack, Suburban, Dacor products, united shade, vixen composites, CLEAR VISION, Cor, MCD, ECI, CLEAR VISION, MAX-AIR, VELARIUM, CLEAR VISION

**DESTINATION: GETTYSBURG**

# Reliving History

Travel back in time when you visit Gettysburg, the small Pennsylvania town that is synonymous with the Civil War.

**BY KELLIE B. GORMLY**





**O**f all the must-see, bucket-list places in America — a category that could include the likes of New York City, Chicago, Yellowstone National Park, San Francisco and Disneyland — my top vote goes to a small historical town in South Central Pennsylvania: Gettysburg.

On July 1-3, 1863, Confederate soldiers under Gen. Robert E. Lee invaded Pennsylvania and clashed with defending Union troops, resulting in the bloodiest battle ever in North America with some 53,000 casualties. The ultimate Union victory in both the Battle of Gettysburg and the whole Civil War changed the fate of the fractured nation.

Today, this history whispers its legacy to people who visit Gettysburg, a place I fell in love with when I first came here in 2003. Ever since, Gettysburg has called me back again and again like a siren. Every American should visit Gettysburg to learn about the tremendous sacrifice so many people made

for their country. If you're like me and countless other regulars, the Gettysburg bug will bite you, and you will want to return over and over again.

I go to Gettysburg at least twice a year to marinate in the history, learn more and enjoy the beauty of the rolling green hills in this part of Pennsylvania. In those tree-covered hills surrounding Gettysburg, eight RV parks welcome visitors. No matter how far the drive may be for you, RV camping in the fascinating greenery of Adams County, surrounded by hallowed ground, is well worth the trip. The autumn months with the vibrant foliage are especially beautiful — particularly in October, which is one of the busiest tourist times of the year.

For more information about visiting Gettysburg, check out Destination Gettysburg at [destinationgettysburg.com](http://destinationgettysburg.com).

For such a geographically small town, there is still so much to do in the Gettysburg and



CAROL H. HIGHSMITH/LIBRARY OF CONGRESS

**At the dedication of Gettysburg National Cemetery, where more than 3,500 Union soldiers are buried, Lincoln delivered the Gettysburg Address.**

surrounding Adams County area that you could probably spend an entire week here and not do it all. Absolutely every attraction is worth seeing and doing, although if I had to name just a half dozen or so, here are some must-sees.

## **GETTYSBURG NATIONAL MILITARY PARK**

The center of any Gettysburg visit is exploring **Gettysburg National Military Park**, the 6,000-acre battlefield that surrounds the town and memorializes the men who fought and died on these hallowed grounds in the largest-ever battle in North America. The three-day battle was fought in three different areas, so your tour can be divided into three main sections. You can zero in on the battlefield from one day of fighting — just west of town on the first day, and south of town on the second and third days — or you can do a comprehensive tour of the entire

park, which takes at least three hours to explore. You can do self-guided tours with apps or CDs in your car, book a bus tour or schedule a private tour with a licensed battlefield guide. Specific significant spots include Little Round Top, the Wheatfield, Cemetery Hill, Devil's Den, the Peach Orchard and the field of Pickett's Charge.

Start any battlefield visit at **Gettysburg National Military Park Museum and Visitors Center**, where you will learn about the many tours available, including guided bus tours and private car audio tours. The building also has a comprehensive exhibit explaining the Battle of Gettysburg and the famous Cyclorama painting — an enormous, 360-degree work of art that surrounds you and brings the battle to life with an immersive visual and audio show.

1195 Baltimore Pike; 877-874-2478; [www.nps.gov/gett/index.htm](http://www.nps.gov/gett/index.htm); [www.gettysburgfoundation.org/plan-your-visit](http://www.gettysburgfoundation.org/plan-your-visit)

## *GETTYSBURG GRUB*

Gettysburg has a large selection of restaurants that will please every palate, style and pocketbook. Here are a few of my favorites I never skip during my visits.

**Budget-Friendly Eatery:** For a casual diner that oozes history, check out the cash-only **The Lincoln Diner**, located across the street from the railroad station where President Lincoln arrived in November of 1863 to give his Gettysburg Address. This is the perfect place to get old-fashioned diner fare like sandwiches, burgers, fries, ice cream and pie. My favorite lunch at the Lincoln Diner, which opened in 1955, is the grilled cheese and chips with a chocolate malt. If you're a dad joke lover like me, ask the staff to sit at the John Wilkes Booth. The joke may be old for them, but it never gets old for me! (32 Carlisle St.; 717-334-3900; [thelincolndiner.com](http://thelincolndiner.com). Open 7 a.m. to 9 p.m. daily.)

**Charming Pizza Joint:** Another longstanding casual favorite is **Tommy's Pizza**, which opened in 1973. This mom-and-pop eatery has delicious pizza, along with subs, gyros, salads and other yummy items. You can get the food to go and bring it back to the RV or dine in at Tommy's. (105 Steinwehr Ave.; 717-334-8966; [tommyspizzainc.com](http://tommyspizzainc.com). Open 11 a.m. to 10 p.m., closed on Tuesdays.)

**Delicious Asian Cuisine:** For a mid-level, sit-down dining experience, check out the place where I once had a birthday meal: **Thai Elephant Walk**, located in the heart of town. The restaurant makes delicious pad Thai, the prices are good, and the service is fast. (51 Chambersburg St.; 717-420-5978; [thaielphantwalk.com](http://thaielphantwalk.com). Closed on Tuesdays.)

**Fancy Historic Night Out:** For a nice dinner out in an ambience

bathed in American history, visit the **Dobbin House Tavern**. Listed on the National Register of Historic Places, this tavern was established in 1776, the year of America's independence. The Dobbin House is the oldest standing structure in the town limits of Gettysburg and pre-dates the Battle of Gettysburg by more than eight decades! The Alexander Dobbin Dining Rooms (open 5 to 9 p.m. for dinner only) are the main attraction at the restaurant and provide candlelit dining in an 18th-century style, with a fancy menu that includes filet mignon, duck, seafood and a vegetarian pasta. If you want a more casual atmosphere for a meal and drinks, the adjacent stone-walled Springhouse Tavern Diner offers salads, sandwiches and soups. (89 Steinwehr Ave., 717-334-2100; [www.dobbinhouse.com](http://www.dobbinhouse.com). Open daily 11:30 a.m. to 9 p.m.)



50KNEAN NOA/UNSPLASH

## FALL APPLE FESTIVAL

South Central Pennsylvania is full of orchards; in fact, on the second day of the Battle of Gettysburg, one of the spots where troops clashed was a peach orchard. For the autumn, it's all about apples: More than 35 varieties of apples grow in the region, just north and west of the battlefield, in some 20,000 acres of apple orchards.

For a seasonal fall treat, dive into the Adams County region's agricultural roots and enjoy a festival focused on one of its best crops. The annual National **Apple Harvest Festival**, held at fairgrounds just 7 miles from Gettysburg, celebrates the autumn season. The October festival includes food, entertainment, crafts, tours of apple orchards, pony rides for kids, antique cars, a contest to become the next Apple Queen, and many other elements for the whole family. Proceeds from the festival benefit local, state and national charitable organizations. (*Located on Route 234 near Arendtsville; 717-677-9413; appleharvest.com*)

## DAVID WILLS HOUSE

For a museum focused on President Abraham Lincoln, visit the **David Wills House**, located in the heart of town on Lincoln Square. In November 1863, Lincoln arrived in Gettysburg via a train station down the street and stayed the night at this house, owned by attorney David Wills, who was instrumental in cleanup after the battle. In a breathtaking, "I'm-standing-right-where-history-happened" moment during a tour of the David Wills House, you enter the upstairs bedroom where Lincoln penned the immortal Gettysburg Address the night before he gave it on November 19. The "few appropriate remarks" were intended to be a supplement to the main speech by orator Edward Everett, but as we know, Lincoln's 272-word speech couldn't have been more wrong when he said: "The world will little note nor long remember what we say here."

The David Wills House, operated by the National Park Service, is now a free museum featuring six galleries and two rooms restored to their 19th-century appearance: the Lincoln bedroom and Wills' office.

8 Lincoln Square; 717-334-2499; [www.nps.gov/gett/planyourvisit/david-wills-house.htm](http://www.nps.gov/gett/planyourvisit/david-wills-house.htm). Hours vary depending on the season; fall hours are typically 1 to 5 p.m., Fridays, Saturdays and Sundays.

## EISENHOWER NATIONAL HISTORIC SITE

Gettysburg may be a Civil War site, but the area has a Side B about the World War II era and mid-20th century with the home of President Dwight Eisenhower. He and First Lady Mamie Eisenhower fell in love with Gettysburg and bought a farm here. During his presidency in the 1950s, Eisenhower used the Gettysburg farm as a weekend retreat and as a meeting place for world leaders. The house includes an elegant living room with gifts of state, and the site has barns and a cinder-block milk house that Secret Service agents used as an office.

Reservations used to be required to take a bus out to **Eisenhower National Historic Site**, but now, you can just drive right up and park. Free guided tours of the house are available on a walk-in basis for up to 40 people during the spring, summer and fall seasons. On days when staffing is available, visitors can explore

Lincoln wrote the Gettysburg Address while staying at the David Wills House the night before his speech on November 19, 1863.



LUCAS/ADOBE STOCK

the Eisenhower family's garage and check out the original vehicles Ike and Mamie drove in Gettysburg, including a 1955 Crown Imperial limousine.

243 Eisenhower Farm Road; 717-334-1124; [www.nps.gov/eise/index.htm](http://www.nps.gov/eise/index.htm). Free admission, house tours daily June through October.

### LOMAS CENTER MUSEUM

If you like antique weapons of warfare, check out one of Gettysburg's newer attractions: the **Lomas Center Museum**, which features the vast collection of the late George Lomas, a prominent Gettysburg resident. The centerpiece is the U.S. 3-inch ordnance rifle called "Old Number One." This cannon, said to be the first of its kind made for the Civil War, came from Phoenix Iron Works near Philadelphia and started its Civil War run in the First Battle of Bull Run in 1861. On the first day of battle in Gettysburg on July 1, Confederate troops from Robert E. Lee's Army of Northern Virginia captured the cannon and continued to use it until the Union recaptured it at the Battle of Spotsylvania in 1864.

Old Number One stands proudly in the middle of the Lomas Center, surrounded by a collection of more than 100 guns and

other artifacts like shells. Some items in the Lomas musket collection, displayed in glass cases, go all the way back to the Revolutionary War. In another room of the museum, visitors can view numerous illustrations of Civil War uniforms by the late George Woodbridge, a renowned illustrator whose drawings appeared in MAD Magazine, as well as framed photographs and other artwork. The museum is in the process of expanding and aims to become an institution focused mostly on the Civil War, but also on the larger story of American military history in more recent wars.

50 Mayor Alley; 717-360-8805; [lomascenter.org](http://lomascenter.org). Open 10 a.m. to 5 p.m., Thursdays through Sundays. Free admission, but donations are welcome.

### JENNIE WADE HOUSE MUSEUM

One of the best-loved stories around town is that of Mary Virginia "Jennie" Wade, the battle's only civilian casualty, and you can hear the heartbreaking story at the **Jennie Wade House Museum**. Just 20 years old during the Battle of Gettysburg, Jennie left her home on Baltimore Street to temporarily stay with her sister, Georgia, in her house down the road. As she baked bread in the kitchen

## GETTYSBURG RV PARKS

Gettysburg has eight RV campgrounds where you'll be surrounded by the beautiful scenery of South Central Pennsylvania that showcases beautiful fall foliage. All these campgrounds are open to the public except for Gettysburg Battlefield Resort, which requires a Travel Resorts of America membership.

**Drummer Boy Camping Resort:** This resort offers 95 acres of wooded campgrounds open from April through October. Amenities include a pool, mini golf course and fishing. (1300 Hanover Street; 717-334-3277; [drummerboycampresort.com](http://drummerboycampresort.com))

**Round Top Campground:** Open from April through October, this campground offers 52 acres with amenities including a swimming pool, game room and basketball court. (180 Knight Road; 717-334-9565; [roundtopcamp.com](http://roundtopcamp.com))

**Gettysburg/Battlefield KOA Holiday:** Located just five miles from downtown Gettysburg, this KOA campground offers perks like Wi-Fi and cable TV, bike rentals, firewood and miniature golf. (20 Knox Road; 800-562-1869; [koa.com/campgrounds/gettysburg/](http://koa.com/campgrounds/gettysburg/))

**Granite Hill Camping Resort:** Home of the annual Gettysburg Bluegrass Festival, held in May and August, Granite Hill offers special amenities including the full-service Red Shed Café and Granite Hill Adventure Golf. The resort is open April through November. (3340 Fairfield Road; 717-642-8749; [www.granitehillcampingresort.com/](http://www.granitehillcampingresort.com/))

**Artillery Ridge Campground & Horse Park:** If you have a horse that you want to bring along on your trip, Artillery Ride is the place to camp. Or, if you just want to ride horses, you can take an equestrian tour of the battlefield through the on-site National Riding Stables. (610 Taneytown Road; 717-334-1288; [www.artilleryridge.com/](http://www.artilleryridge.com/))

**Gettysburg Campground:** Bordered by Marsh Creek, this campground offers amenities including onsite RV service, a camp store, indoor and outdoor games, and a dog-walking area. It is open April through October. (2030 Fairfield Road; 717-334-3304; [www.gettysburgcampground.com/](http://www.gettysburgcampground.com/))

**Deer Run Camping Resort:** Open April through October, Deer Run is the site of many music festivals. It's located just 75 yards from the famed Appalachian Trail. (111 Sheet Iron Roof Road; 717-486-8168; [deerruncampingresort.com/](http://deerruncampingresort.com/))

**Gettysburg Battlefield Resort** (TRA members only): Located adjacent to Gettysburg National Military Park, campers can enjoy their own re-enactment area, an Olympic-size swimming pool, themed activities, and a general store and ice cream parlor. (1960 Emmitsburg Road; 855-584-4056; [www.travelresorts.com/locations/gettysburg-battlefield-resort/](http://www.travelresorts.com/locations/gettysburg-battlefield-resort/))



GEORGE SHELDON/SHUTTERSTOCK

**Hear about the only civilian death during the Battle of Gettysburg at the Jennie Wade House Museum.**

for the Union soldiers, a Confederate sharpshooter's bullet pierced two doors and landed in her heart, killing Jennie instantly. At the house, which looks very close to its 1863 appearance, you can explore the rooms and still see the damage the lethal bullet created in the doors.

The Jennie Wade House Museum serves as a shrine to an innocent life cut way too short, and a civilian family's life during the Civil War. You can visit Jennie Wade's grave, topped by an American flag on a flagpole to honor the heroine, in the Evergreen Cemetery. This civilian cemetery, just on the other side of a gate from Gettysburg National Cemetery, is another fascinating place to visit.

548 Baltimore St.; 717-334-4100; [www.gettysburgbattlefieldtours.com/jennie-wade-house/](http://www.gettysburgbattlefieldtours.com/jennie-wade-house/). Open 9 a.m. to 5 p.m. daily. 🚗



LIBRARY OF CONGRESS

Kellie B. Gormly is an award-winning, veteran journalist and author of the new Civil War book, "Cease Firing! Life and Death at The Swope Manor." She writes for publications including The Washington Post, Woman's World and the History Channel. She lives in Pittsburgh and lives to travel — both via road trips and airplanes. Kellie's website is [kelliebormly.com](http://kelliebormly.com).





# Motorcoach Lots for Sale

In a beautiful setting with a panoramic view of the Santa Rosa mountain range, this motorcoach resort offers the ultimate experience. All of the quality features developed in over 20 previous Outdoor Resorts locations are included. There are 400 beautiful lots including 136 on a navigable waterway.

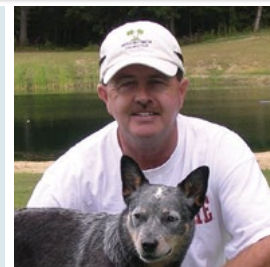
- 400 beautifully landscaped motorhome lots
- Private dock on all waterfront lots
- Approximately two mile of navigable waterways approved for up to 18' electric boats with up to 7.5 horsepower motors
- Every lot has 200 amp and natural gas services
- Optional 9' x 13' casita available at an additional cost
- Up to 600 square foot tile roof inclosed structure
- Dedicated on-site staff
- 10,000 square foot clubhouse with restaurant, bar, fitness center, lap pool, spa and tanning pool
- Two additional swimming pools with spas, bathhouses and laundry facilities
- Nine-hole par 3 golf course with golf cart paths
- Private dining room and bar
- Three lighted tennis courts
- Individual lots are sold Fee Simple

## Contact Kerry Johnston

Mobile: (541) 912-6409 • [kdj.johnston@gmail.com](mailto:kdj.johnston@gmail.com)

Rental: (888) 277-0789 • (760) 863-0789

Motorcoach Country Club, 80-501 Avenue 48, Indio, CA 92201



Scan our QR code and take a tour through the resort.







# GET AHEAD

## with the Allegro Red 33 AA

This smaller coach packs a wallop with a powerful engine, easy drivability and an abundance of luxurious features.

**T**he Allegro RED line is back for 2024 and is considered the little brother of the Phaeton luxury line. The Allegro comes in three different floorplans; the smallest is the Red 33 AA, which measures 35 feet, 2 inches long with a wheelbase of 198 inches.

Under the hood, you'll find a powerful Cummins L9 380-horsepower diesel engine with 1,150 lb.-ft. of torque. The coach is built on a Freightliner XCM modular rail rear engine chassis that offers more outside storage and has a 3000-mh transmission.

The RED 33 AA has an exclusive rear suspension system that offers greater towing capacity and consistent handling. Suspension forces are dissipated thanks to the V-rod connection, which reduces stress for greater durability and longevity. A transverse beam is integrated with the trailing arm to form a single U-shaped assembly, enhancing stability.

### EXTERIOR AND INTERIOR

All Tiffin motorhomes feature an eight-step, full-body paint system that incorporates premium-grade paints sealed with three layers of ultraviolet-protective clear coat. An additional layer of high-performance film has been placed on the front of the coach and in select areas for even more protection.

The Allegro RED line comes in five exterior colors (Nasa, Euro Blue, Fire Opal, Rustic Canyon and Frosted Granite) and two graphic design choices.

Inside you can choose from two decors (Stoney Creek or Solstice) and four cabinet colors (Shadow, Sandstone, White Linen or Platinum).

The Allegro RED line features three floorplans: the 33 AA, 37 BA (pictured) and the 38 KA.



**The 33 AA may be the smallest floorplan in the Allegro RED line, but it has plenty of amenities including a roomy living area (above) and bathroom (right).**



## DRIVING COMPARTMENT HIGHLIGHTS

Driving the 33 AA is a joy because of several five-star features. The OptiView all-digital LCD dash has improved interface and steering wheel controls with an anti-glare display and menus. The RoadWatch safety system includes collision mitigation, adaptive cruise control, electronic stability control, automatic traction control and the Mobileye sensor detection. The driver's console is easy to use and features an all-new ergonomic tilt and telescoping steering wheel and column-mounted controls.

To add more to driver comfort, the Red 33 AA has windshield shades to provide safety from the sun, dash fans, a Kenwood radio/CD player that has a tilt screen, a three-camera system that can be viewed at the same time, adjustable accelerator and brake pedals, and adjustable seats and armrests.

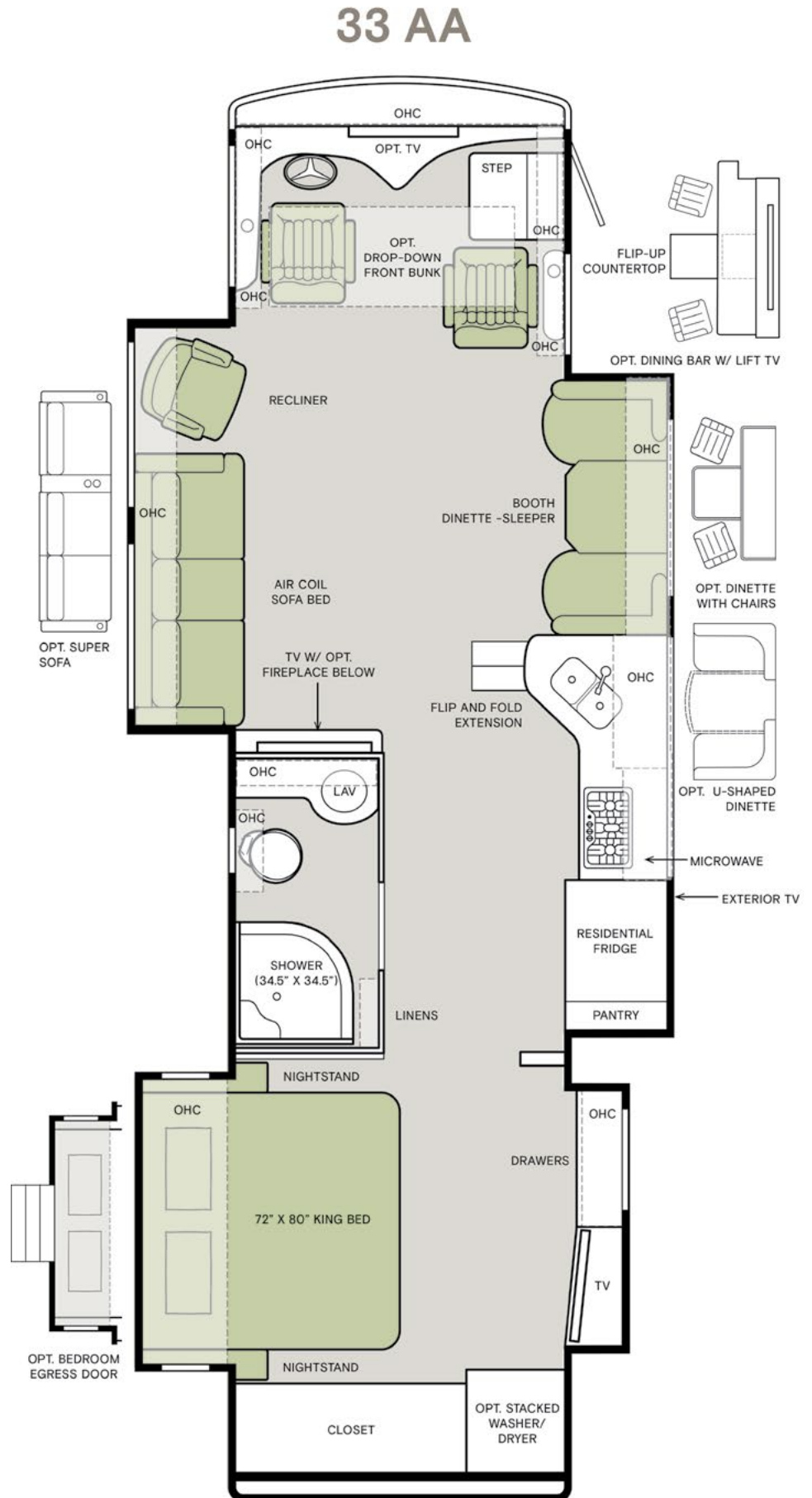
## IDEAL LIVING AREA

Comfort was top of mind in designing the living space as well. In fact, the design of every Allegro RED floorplan must meet four criteria: maximum space, optimal organization, relaxation plus and elegant atmosphere. These essential elements are obvious in the coach's interior.

The main compartment offers plenty of seating as well as a dinette booth with lift-up seat storage, handcrafted overhead cabinetry, a television and dimmable LED lighting. Safety features include a smoke detector, fire extinguisher, LPG leak detector and carbon monoxide detector.

The kitchen comes with a 20-cubic-foot stainless steel residential refrigerator with a top freezer, a three-burner liquid propane cooktop and a 1.7-cubic-foot smart convection microwave with air fry. Kitchen organization is easy with overhead cabinets and a flip-and-fold countertop extension.

The bathroom features a one-piece molded fiberglass shower that measures 34.5 x 34.5 inches, a gravity





flush toilet, a mirrored medicine cabinet and a roof vent fan.

The bedroom is spacious with a memory foam king-size bed with underbed storage, floor-to-ceiling closet space, a mounted television and a handcrafted privacy door.

A power drop-down front overhead bunk is available on all Allegro RED floorplans for comfortable guest sleeping. Other options include a standalone fireplace, heated tile flooring, stacked washer and dryer and a central vacuum system.

Overall comfort is attained with a 15,000 BTU Extraordinaire air-conditioning system, a Truma hot water system, a ShowerMeiser for conserving water while boondocking and a Girard side-mounted patio awning.

With these innumerable standard and optional features, you simply can't go wrong with an Allegro RED 33 AA! 🏠

## 2024 ALLEGRO RED 33 AA SPECIFICATIONS

**MSRP** \$375,293

### DIMENSIONS

Overall length (approx.) <sup>1</sup>	35' 2"
Wheelbase <sup>2</sup>	198"
Overall width <sup>1</sup>	101"
Overall height	12' 10"
Minimum garage height	14'
Interior height	84"
Interior width	96"
Square footage (approx.) <sup>2</sup>	335
Basement storage (approx.)	84 cu.ft.

### WEIGHT LIMITS (in pounds)

GAWR – front	14,320
GAWR – rear	23,000
GVWR	37,320
Max. trailer weight <sup>3</sup>	10,000
Hitch rating	10,000
GCWR	47,320

### CAPACITIES (in gallons)

Fuel tank	100
DEF tank	13
Fresh water	90
Grey water	70
Black water	50
LPG tank (can be filled to 80% capacity)	36

### QUANTITIES

Number of Slideouts	4
Sleeping Capacity <sup>4</sup>	4 to 6
Sleeping Areas <sup>4</sup>	2 to 4
Seat Belts <sup>4</sup>	5 to 7
Seating Capacity <sup>4</sup>	7 to 10

<sup>1</sup> The approx. width and length does not

include side view mirrors and rear ladders.

<sup>2</sup> Square footage calculated with the slide-outs fully extended.

<sup>3</sup> Maximum trailer weight is dependent on the loading and towing variables which include the GVWR, GAWR and GCWR, as well as adequate trailer brakes.

<sup>4</sup> Dependent on furniture and dinette options.

**Standard Chassis and Drivetrain:** Freightliner® XCM modular rail rear engine diesel chassis; Cummins® L9 380-HP diesel engine with 1,150 lb.-ft. torque; 160-amp alternator; Allison® 3000 MH 6-speed automatic transmission with lock-up torque converter; aluminum wheels; front and rear 275/80R 22.5 tires; (2) 12-volt flooded lead-acid chassis batteries; hydraulic leveling jacks with control panel; Freightliner® V-series VFS I-beam front suspension; Freightliner® V-series V-ride rear suspension; custom tuned Sachs® shock absorbers; rear radiator; front disc brakes and rear drum brakes; full air brake system with automatic slack adjusters; single stage variable geometry turbocharger (VGT) engine brake; manual parking brake; driver and passenger side fuel fill; tire pressure monitoring; adaptive cruise control; automatic traction control; collision mitigation with forward warning and active braking; electronic stability control

**Standard Construction:** seamless one-piece gel-coat fiberglass molded roof cap; 5.25" formed roof insulation; tubular aluminum roof skeleton frames; Extraordinaire™ ducted air-cooling system; one-piece molded

gel-coat fiberglass front and rear caps; steel cockpit overhead support frame; Crane® Composites Noble® Select all-composite exterior sidewalls; tubular aluminum wall skeleton frames; high-performance thermal insulation in sidewalls; steel floor skeleton; engineered wood sub-flooring; 1.5" thick thermal insulation in floor; steel basement construction; rust protective undercoating; combination hydraulic and electric slide-out mechanisms

**Standard Electrical:** Spyder controls multiplex system; Firefly Integrations Mira Module; centralized 7.5" Spyder System main monitor; interior entryway Spyder System color touchscreen; additional Spyder color touchscreens throughout coach; 8.0-kilowatt Onan® quiet diesel generator; generator slide tray; 2,000-watt Pure Sine Wave inverter charger with auto-gen start and interior remote control; battery slide-out tray; 50-amp shore power; auxiliary solar port; HD over-the-air antenna; park cable and ground satellite hook-up; prep for in-motion satellite; Blu-ray™ player; satellite receiver; 12-volt breaker panel; 12-volt disconnect switch; rotary disconnect switches for house batteries, chassis Batteries and inverter; ground fault circuit interrupter (GFCI) outlets at galley, lavatories and sewer bay; 110-volt exterior receptacle; Surge Guard® transfer switch; USB receptacles throughout coach; heating and cooktop power source is liquid propane coach; house batteries are (6) 6-volt 120-amp hours flooded lead-acid house batteries; 15,000-BTU air conditioners with heat pumps



**The bedroom features plenty of storage in the overhead cabinets as well as an optional stacked washer and dryer (opposite page).**

**Standard Plumbing:** Aqua View Shower-miser™; water filter; water pump switch access from Spyder system and sewer bay board; low-point water drain lines; black holding tank flush system; gravity water fill; heated fresh and holding tank compartment via heat duct; tank level monitor system; centralized exterior sewer bay with gravity black and grey evacuation ports; exterior rinse hose with shower head; sewer bay hand sanitizer and paper towel holders

**Standard Exterior:** full-body paint with (3) layers of clear coat; single-colored slide-out endwalls; high-performance protective film on front cap and select areas; (1) Girard® side-mounted powered patio; awning with integrated LED lighting; Girard® powered door awning with integrated LED lighting; Girard® slide-out toppers; side-swinging exterior storage; doors with gas shocks; lockable handles on compartment doors; motion-sensor lights in cargo bay; 120-volt and 12-volt outlets inside cargo bays; pass-through basement storage; charcoal carpet cargo walls; fiberglass reinforced plastic basement floor; frameless, single-pane windows; exterior patio light; daytime running lights; docking lights; chrome power heated side-view mirrors with integrated cameras; exterior TV with soundbar; fast-charge USB ports within exterior TV compartment; lightweight entry door with integrated screen; entry door grab handle; deadbolt front entrance lock; automatic double entry step; front door entry system via key fob; mud flaps; custom rock guard

**Standard Interior:** handcrafted overhead cabinetry; carpeted step well with composite steps; powered step well cover; living area TV; solid surface galley countertop; treated carpet in slide-out floors; handcrafted slide-out fascia; soft touch vinyl ceiling; dimmable LED lighting; prep for washer and dryer; carbon monoxide detector; LPG leak detector; smoke detector; fire extinguisher; solar and privacy shades; soft-closing drawers; powered roof vents; interior grab handle at entry door; egress windows throughout coach; marble obsess glazed porcelain floor tiles

**Standard Driver's Compartment:** Ultrafabrics® Montage power driver and passenger seats; dual driver and passenger seat armrests; swivel bases for driver and passenger seats; adjustable seatbelt brackets; powered passenger seat footrest; tilt and telescoping steering wheel with integrated controls; adjustable accelerator and brake pedals; wraparound dash with matte gray accents; mounted dash fans; cupholders on driver and passenger side; digital dash cluster; (1) center storage drawer; generator start and stop rocker switch; USB dash receptacles; 12-volt dash receptacle; backlit dash rocker switches; passenger console controls for map light, fan and step well cover; driver and passenger map lights; one-piece panoramic windshield; single-motor intermittent windshield wipers; automatic LED headlights; side-view cameras; color back-up camera; 7" high definition LED multichannel monitor for sideview and back-up cameras; stereo with

AM/FM radio, CD player and satellite radio; ceiling-mounted speakers; overhead cabinetry with wooden panel doors; auxiliary start switch; concealed air horn; manual opening driver-side window; solid, non-opening passenger-side window; powered solar and privacy windshield shade; manual solar and privacy shades on side windows

**Standard Kitchen:** 20-cubic-foot stainless steel residential refrigerator with top freezer; 1.7-cubic-foot smart convection microwave with air fry; three-burner liquid propane cooktop; double bowl kitchen sink with single lever faucet and pull-down sprayer; galley overhead cabinets; panoramic galley window; task lighting; full tile backsplash; solid surface galley countertop, sink and cooktop cover; flip-and-fold countertop extension

**Standard Bedroom:** memory foam king mattress; floor-to-ceiling closet space, under bed storage; bedside windows; overhead cabinets with headboard; bed comforter with throw pillows; handcrafted privacy door; LED reading lights; nightstand with solid surface tops; mounted bedroom TV; centralized entertainment center; ceiling fan; laundry hamper

**Standard Bathroom:** one-piece molded fiberglass shower (34.5" x 34.5"); (1) gravity flush toilet; porcelain master bathroom sink; solid surface lavatory top; handheld shower head with slide bar; shower skylight; shower LED light with sliding cover; towel and toilet paper holders; mirrored medicine cabinet; roof vent fan; base cabinet

DESTINATION: INDIANAPOLIS

# Start Your Engines

Nature lovers, sports fans and everyone in between will fall for the charm of Indianapolis, a Midwestern gem.

BY NICOLE SIPE







**N**aptown. Circle City. Indy. Whatever you want to call it, Indianapolis is a Midwestern gem. The state of Indiana adopted the motto of “The Crossroads of America” because of its proximity to four major interstate highways. However, despite its location smack-dab in the middle of the heart of the United States, Indianapolis sometimes gets overlooked for the bigger cities that surround it, such as Chicago and Cincinnati.

Though the city humbly flies under the radar most of the time, Indianapolis deserves all the love and attention. This mid-sized state capital has a lot to offer travelers who are looking for a laid-back, relatively affordable place to experience the best of the Midwest.

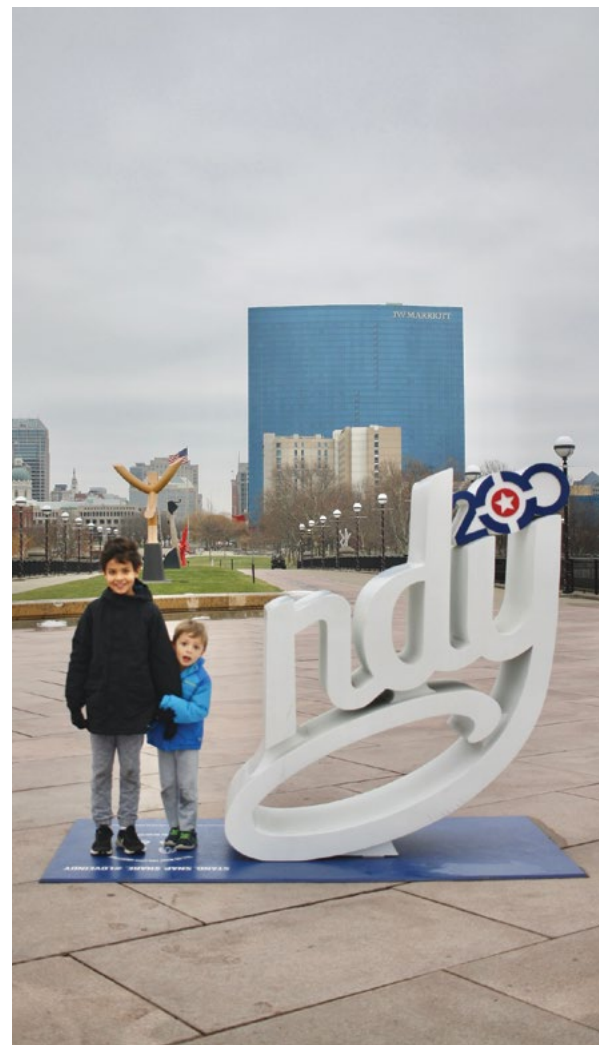
There’s something for everyone in Indy, from nature lovers to sports fans to those looking for all-ages fun.

**White River State Park (right) is visited by nearly 3 million visitors each year. The park includes several museums, including the Indiana State Museum and the Eiteljorg Museum (below).**

### WHITE RIVER STATE PARK

White River State Park is the place to visit to see the best of Indy in one area. This 250-acre green space is home to the Indianapolis Zoo, museums, public art, memorials and the Central Canal Walk.

The park is divided by the White River, with lots to discover on each side. On the east side of the river is where you will find three museums within walking distance of one other.



NICOLE SIFE



FIHPHOTO/ADOBE STOCK

The **Indiana State Museum** is the state’s museum for science, art and culture, with exhibits covering life in the Midwest from the Ice Age to the 21st century. The **Eiteljorg Museum** houses Native American and Western art collections, and explores Indiana’s indigenous tribes, including the Delaware, Miami and Potawatomi Indians. College sports fans will enjoy the **NCAA Hall of Champions**, a museum dedicated to all 24 sports of the National Collegiate Athletic Association, with sports simulators and retro memorabilia.

Cross the White River Pedestrian Bridge to access the west side of the White River State Park, where you’ll find the **Indianapolis Zoo**, home to one of the largest orangutan centers in the world. Admission to the zoo grants you access to the adjacent **White River Gardens**, a botanical garden and oasis in the middle of the city.

Before you leave White River State Park, be sure to stroll along the **Canal Walk**, a three-

mile loop that runs up to 11th Street. Or experience the canal via gondola or self-propelled swan paddle boat, which can be rented west of the Indiana State Museum.

801 W. Washington St.; 317-233-2434; [whiteriverstatepark.org](http://whiteriverstatepark.org). Admission to the park is free; admission to museums and attractions vary by facility.

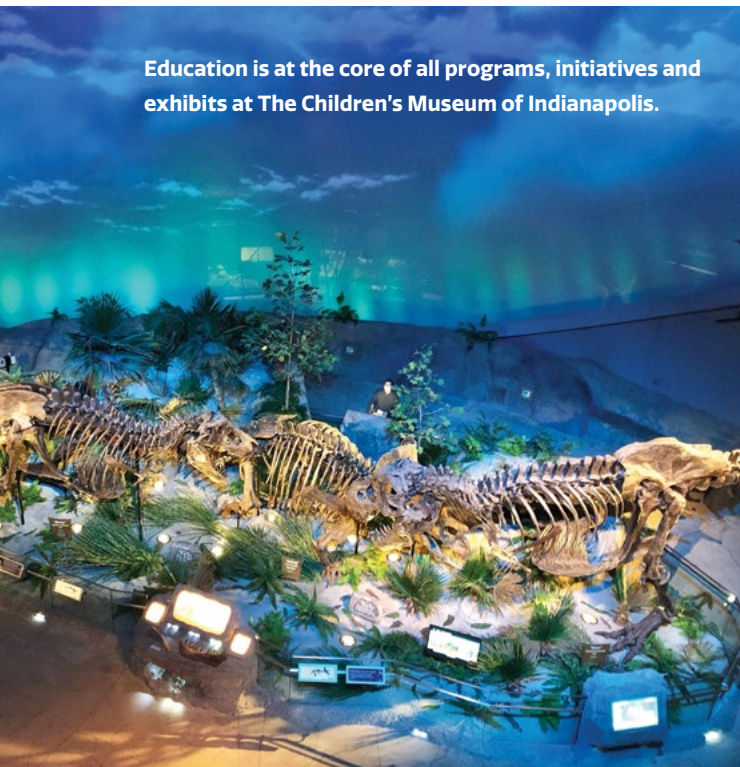
## THE CHILDREN'S MUSEUM OF INDIANAPOLIS

Whether you're visiting with kids or you're simply a kid at heart, **The Children's Museum of Indianapolis** is a must-see. The world's largest children's museum is right here in Indy, and has five floors of interactive exhibits and attractions.

One of the most popular exhibits is Dinosphere, where prehistoric creatures come to life through immersive displays and hands-on activities. See fossils up close, examine real dinosaur bones and even watch a paleontologist at work. Another popular attraction is the "Take Me There: Greece" exhibit, which transports visitors to the Mediterranean country through a realistic streetscape and cultural experiences.

Each year from March to October, the museum's Riley Children's Health Sports Legends Experience is open to explore. The

Education is at the core of all programs, initiatives and exhibits at The Children's Museum of Indianapolis.



NICOLE SHIPE

## HOOSIER EATS

No trip to Indianapolis would be complete without trying some of the food that the city is known for. Whether you enjoy savory snacks or sweet treats, Indy has a range of options for every palate and price point. Here are five local mainstays where you can find iconic Indianapolis eats.

**Pork Tenderloin Sandwich:** Hoosiers love a good tenderloin, a breaded, flat, pork sandwich similar to a German schnitzel. Hoosiers also love basketball. You can find both at **Plump's Last Shot**, a casual sports bar decorated with Indiana basketball memorabilia. The pub is a tribute to Bobby Plump, a high-school basketball point guard for Milan High School in eastern Indiana, made famous in the 1986 film "Hoosiers." The tenderloin at Plump's is large — it dwarfs the bun it sits between by at least an inch all around like a proper tenderloin should — and costs about \$13. (6416 Cornell Ave.; 317-257-5867; [facebook.com/PlumpsLastShot](https://facebook.com/PlumpsLastShot))

**Popcorn:** Indianapolis is considered part of the "Corn Belt," an area of the country where more land is used to grow corn than any other crop. Needless to say, you can find great corn here and equally great popcorn. **Just Pop In!** sells some of the best gourmet popcorn in the city, including "Indy Style" — a mix of caramel and cheddar popcorn. Can't settle on just one flavor? Try a popcorn flight for \$10, which you can also pair with a flight of wine or beer for \$22. (6406 Cornell Ave.; 317-257-9338; [justpopinpopcorn.com](http://justpopinpopcorn.com))

**Sugar Cream Pie:** Considered the unofficial Indiana state pie, sugar cream pie is rich, comforting, creamy and melts in your mouth. **Pots & Pans Pie Co.**, located in Indianapolis' Meridian-Kessler neighborhood, serves its own delicious take on the sugar cream pie with a toasted caramel brulee on top. This takeout bakery offers pie by the slice for \$6 or whole for \$33. (4915 North College Ave.; 317-600-3475; [potsandpansindy.com](http://potsandpansindy.com))

**Shrimp Cocktail:** The phrases "great seafood" and "landlocked state" aren't typically uttered in the same sentence, but the shrimp cocktail at **St. Elmo Steak House** in downtown Indy defies that logic. This restaurant has been a Circle City staple since 1902, but it is world-famous for the only appetizer on the menu: the shrimp cocktail. The fiery, sinus-clearing shrimp cocktail will bring tears to your eyes — literally, because the app is spicy! No visit to Indy is complete without partaking in this \$17.95 seafood splurge. (127 S. Illinois St.; 317-635-0636; [stelmos.com](http://stelmos.com))

**Biscuits and Gravy:** Biscuits and gravy is an Indy breakfast staple, which you'll find on menus everywhere in the city, from greasy spoon diners to upscale cafes. **Charlie Brown's Pancake and Steak House** in Speedway has been around since 1975 and serves up some of the best b-and-gs anywhere — for \$6.99. This is the place to be during the month of May when Indianapolis 500 festivities are happening because it's located a block from the Indianapolis Motor Speedway — so close, you can hear the sound of the cars racing around on the track! (1038 N. Main St.; 317-243-2502; [charlie-browns-pancake-steak-house.business.site](http://charlie-browns-pancake-steak-house.business.site))



**Indianapolis was the main supply center for the Union Army during the Civil War. Today, the city attracts visitors from around the country and globe.**

expansive 7.5-acre outdoor sports complex features a variety of activities, all themed around Indiana's rich sports heritage. Here, families can get in the game and try different sports — everything from tennis and football to hockey and baseball — in an inclusive, non-competitive space.

Purchasing tickets ahead of time is encouraged for this popular museum and can be done online or over the phone. An added bonus: You can save up to 20% by buying general admission tickets at least two weeks in advance.

3000 N Meridian St.; 317-334-4000;  
[childrensmuseum.org](http://childrensmuseum.org)

### **INDIANAPOLIS MOTOR SPEEDWAY**

Known as the "Racing Capital of the World," the **Indianapolis Motor Speedway** is a beloved icon to racing fans all around the globe. This is the home of the Indianapolis 500, the famous IndyCar race that typically takes place the Sunday of Memorial Day weekend. Although the 500 is a one-day race, Hoosiers celebrate racing culture for weeks leading up to the event. The phrase "The Month of May" means something to the people of Indy! It signifies weeks of qualifying races, celebrations like the 500 Festival,

events like the 500 Festival Mini-Marathon and more ... all culminating with the spectacle of the venerable Indianapolis 500.

Although the museum inside the Indianapolis Motor Speedway is currently closed for renovations (it's expected to reopen by April 2025), you can still see the IMS up close with a track tour. "Kiss the Bricks" is one of the more popular tours and includes a lap around the 2.5-mile-long oval racetrack, and an opportunity to kiss the famous paving bricks at the start/finish line from the original track. Yes, kissing racetrack bricks is a thing here!

4790 W. 16th St.; 317-492-8500;  
[indianapolismotorspedway.com](http://indianapolismotorspedway.com).

### **THE VIRGINIA B. FAIRBANKS ART AND NATURE PARK / 100 ACRES**

One of the coolest parks in Indianapolis, **The Virginia B. Fairbanks Art and Nature Park** is definitely worth a visit when you're in Indy. Located adjacent to the **Indianapolis Museum of Art at Newfields**, this is one of the largest art parks in the country, and it is completely free to visit. It's called "100 Acres" by locals, partly because the park sits on 100 acres and partly because it's a lot shorter to



FIHPHOTO/ADOBE STOCK

say than “The Virginia B. Fairbanks Art and Nature Park.” (There’s nothing quite like Midwest pragmatism!)

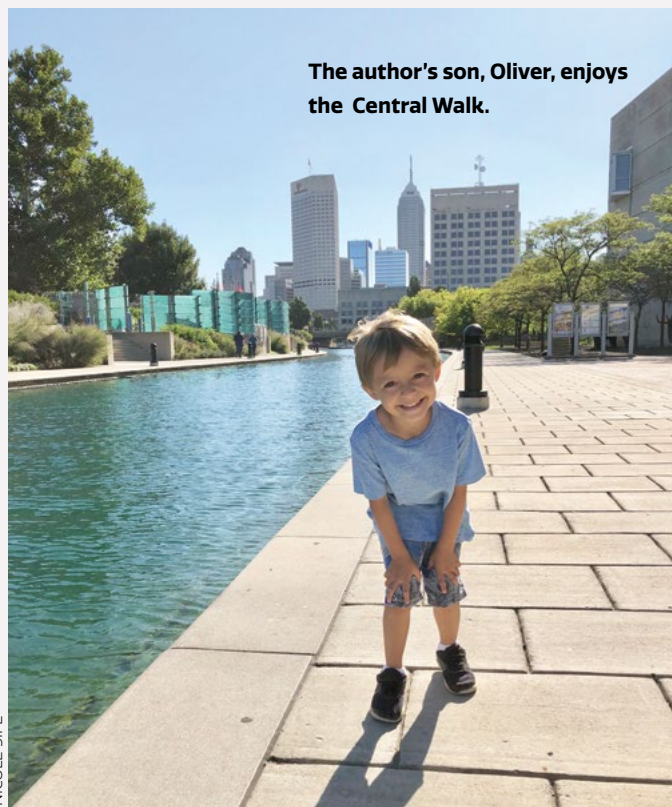
One of the park’s major draws is the sculpture park, which features a diverse collection of installations created by local and international artists. One of the most popular sculptures in the park is “Funky Bones,” a massive, skeleton-shaped structure, which has gained popularity in the past decade because it was featured in the book “The Fault in Our Stars,” written by Indianapolis author John Green, and later in a movie by the same name.

Make sure to wear your walking shoes to 100 Acres, because there’s lots to see as you meander past woodlands, wetlands, meadows and a 35-acre lake. This park is a great place to be surrounded by the natural world and contemporary art all at once.

1850 W. 38th St.; [discovernewfields.org/do-and-see/places-to-go/virginia-b-fairbanks-art-nature-park-100-acres](https://discovernewfields.org/do-and-see/places-to-go/virginia-b-fairbanks-art-nature-park-100-acres). Admission is free, and the park is open dawn to dusk.

### NAPTOWN NEIGHBORHOODS

**Monument Circle** — located in the center of downtown Indianapolis — is a must



The author's son, Oliver, enjoys the Central Walk.

NICOLE SIPE

## INDY WALKING AND BIKING TRAILS

Indianapolis is home to an abundance of paved biking and walking trails that offer stunning views and access to much of the city.

The **Monon Trail** is one of the larger greenways in Indy, spanning more than 27 miles from one end to the other. It starts at east 10th Street and Lewis Street in Indianapolis and winds its way north to the town of Sheridan. Much of the northern part of the trail is tree-lined, so it’s a great way to surround yourself with nature and experience the changing seasons in central Indiana.

The **Indianapolis Cultural Trail** is eight miles and connects all six of Indy’s cultural districts: Fountain Square, Indiana Avenue, Market East, Mass Ave, White River State Park and the Central Canal Walk, and the Wholesale District. There’s no official start and end to this urban trail, but it provides access to many downtown hotels and attractions, and there are bike share stations all along the way.

The **Fall Creek Trail** runs just under seven miles, from Skiles Test Nature Park (6828 Fall Creek Road) to the Central Canal Towpath. This trail runs along Fall Creek, so you’ll get great views of the waterway, pass through bridges and travel alongside old Indianapolis neighborhoods.

# RV PARKS AND RESORTS IN AND AROUND INDY

If you're looking for a place to settle during your trip to Indianapolis, you'll find some great RV parks and resorts around the city. Here are six to consider!

**Indiana State Fair Campground:** This year-round RV camping site is primitive, but it makes a good base from which to explore Indy, as it's located in the heart of the city. Full hook-up sites are available April through October, weather permitting; and electric-only hook-ups are available November through March, weather permitting. (1202 E. 38th St.; 317-927-7500; [indianastatefair.com/p/visit/camping-information](http://indianastatefair.com/p/visit/camping-information))


**Lake Haven Retreat:** Located just eight miles south of downtown Indy, Lake Haven Retreat is an RV resort with a full range of services, including a laundry facility, catch-and-release pond, playground and dog park. (1739 W. Edgewood Ave.; 317-783-5267; [lakehavenretreat.com](http://lakehavenretreat.com))

**Indy Lakes RV Park:** This RV park is a true paradise for those who love fishing. Known as "the home of the big ones," the lake that this campground sits on offers an abundance of large fish, including carp and catfish. Indy Lakes RV Park is open year-round and has a bait and tackle shop on site, as well as fishing contests throughout the week. (4001 W. Southport Road; 317-888-6006; [indylakes.com](http://indylakes.com))

**S&H Campground:** Family-owned and -operated since 1968, S&H Campground takes full advantage of its natural surroundings. Roughly 70 percent of its campsites are shaded by mature trees, with many located near Sugar Creek or a three-acre fishing lake. Campers have access to the campground's Family Fun Park — open weekends from May through November — which includes activities like miniature golf, tractor rides and live music. (2573 W. 100 N., Greenfield; 317-326-3208; [sandhcampground.com](http://sandhcampground.com))

**Indianapolis KOA:** If you're looking for an RV park that's convenient to downtown Indy but far enough away to still feel a little bit "country," the Indianapolis KOA is for you. Accommodations for all types of RVs are available, as well as patio sites equipped with outdoor furniture and fire pits. Meet some of the friendly horses that call this place home, cool off in the pool, or let your pet run and play at the Bark Park. (5896 W. 200 N., Greenfield; 317-894-1397; [koa.com/campgrounds/indianapolis](http://koa.com/campgrounds/indianapolis))

**Yogi Bear's Jellystone Park RV Resort at Lake Monroe:** If you're traveling with young children, Yogi Bear's Jellystone Park RV Resort at Lake Monroe is worth the drive. Aimed at families, visitors to this RV park can enjoy a variety of amenities, including swimming pools, a splash ground with water slides, a jumping pillow, pedal carts, wagon rides, indoor cafe and ice cream parlor, and daily activities. (9396 S. Strain Ridge Road, Bloomington; 812-824-3322; [jellystonelakemonroe.com](http://jellystonelakemonroe.com))



Located just 20 miles from Indianapolis,  
S&H Campground is kid- and pet-friendly.

NICOLE SIPE



stretch of street on Massachusetts Avenue that's the real pulse of the city. It's here that you'll find lots of public art and murals around every corner, including two large murals of iconic artists with Indiana roots: poet **Mari Evans** (448 Massachusetts Ave.) and writer **Kurt Vonnegut** (345 Massachusetts Ave.). Can't get enough of the "Slaughterhouse-Five" writer? Just a mile away from the Vonnegut mural you'll find the **Kurt Vonnegut Museum & Library** (543 Indiana Ave.).

**Author and poet Mari Evans was part of the Black Arts movement of the '60s and '70s. Her mural was painted by Michael "Alkemi" Jordan in 2016.**

The fun and funky **Fountain Square** is another notable neighborhood. This area has vintage shops galore, duckpin bowling inside the historic **Fountain Square Theatre** building (1105 Prospect St.), local craft breweries and a hidden gem called **The Idle** (800 Virginia Ave.), an outdoor public viewing area where you can sit in stadium seats and watch the traffic that speeds down Interstate 65! 🚗

visit, especially around the holidays when a 240-foot-tall tree is erected at the **Soldiers and Sailors Monument** (1 Monument Circle), made from more than 5,000 lights.

Traveling a couple of blocks north of "The Circle" will take you to **Mass Ave**, a unique

*Nicole Sipe is an editor for a Midwest parenting magazine and a children's book author. Born and raised in Southern California, Nicole traded the city and sun for corn and creeks, and now lives in Indiana with her husband, two sons and dog.*

# QUICK ZIP

## WE FIXED THE FITTED SHEET

Our two-piece fitted sheet design is:

- Easy to change in tight places
- Folds flat to save space
- Engineered to stay snug all night

Dreaming of better bedding? We've completely redesigned sheets to work for you, not against you. The QZ system is a perfect fit for any RV. Enjoy fit, function, and that feel-good feeling.

**SAVE 15%**

Use code ROUGHINGIT at QuickZip.com

# Global RV Adventures

For the last 15+ years, the Orioles have explored different parts of the world in an RV.

ARTICLE AND PHOTOS BY CAROLYN BREINICH

**D**ebbie and Dennis Orioles met in 1973 at a horse show and were married three years later. For their fifth anniversary, which is symbolized by wood, Dennis promised Debbie that he would build her a barn so she could have the horse she always wanted.

“The next day I went and bought a horse. Dennis came home from work to find a horse in the front yard. I didn’t have the barn yet, but I had my horse,” Debbie fondly recalled.

The Orioles have two daughters, Missy and Courtney, and when they were younger, the family camped with a tent in the backyard.

“We had a timeshare with Outdoor World, and we would take the girls and their friends and camp in a tent. Eventually I got a cargo van with a fold-down bed that we would stay in,” Dennis said.

“I hated the van,” Debbie quickly chimed in.

Dennis retired in 2005 after years of being a train engineer for Long Island Railroad. Five

years later, Debbie retired as a vet technician. “We knew that when we retired, we wanted to stay busy; we are busier now than we ever were before,” Dennis laughed.

## EXPLORING THE LAST FRONTIER

For years they contemplated getting an RV, and in 2007, Dennis told Debbie, “It’s your job to research what we are going to do and see.”

They decided to go on a 15-day adventure with Great Alaskan Holidays, which provides customers with a brand-new Class C, sample itineraries, lists of what to bring, recommended campground and mobile apps to use. The trip starts in Iowa and customers drive whatever route they wish to Alaska, and after exploring the 49th state, customers leave the RV at a dealer in Alaska and fly home. “The company we used was fantastic. They took care of all our needs,” Dennis stated.

When this trip was over, they had time to kill before their flight home, so Dennis and Debbie walked around the RV dealer. They enjoyed driving the Class C all over Alaska, so they decided to look at Class A motorhomes with a little more room. They had just enough time to take one on a test drive before they had to get to the airport. Before they left, they put a deposit on their first motorhome. “We flew back a few weeks later to pick it up,” Dennis commented. The floor plan was ideal; it had bunks so their two grandsons could travel with them.

Over the years, the Orioles have traveled to every state (except Hawaii) at least once. They have journeyed to Alaska six times with Great Alaskan Holidays. “We love traveling through the Yukon to get to Alaska. You get to go on adventures no one else has,” Dennis stated. The Orioles now meet up with the rental company in Forest City, Iowa, and help prep the RVs while spending time with friends.



In 2022, Dennis and Debbie Oriole purchased a Tiffin Allegro Bay Super C.



## SEEING THE WORLD

The Orioles have even traveled internationally, renting an RV in Australia twice. Both times, they used Maui Motorhome Rentals, which allows people to rent a Class C or camper van to explore Australia.

A few of the many highlights of their trips include driving the Great Ocean Road, seeing the Apostles Stone Cropping, spending time in the city of Broken Hill to get a true sense of the outback, experiencing the rainforests at Dorriggo National Park and visiting the Australia Zoo (Steve “The Crocodile Hunter” Irwin’s zoo). Dennis commented that, “seeing and exploring Australia in an RV, is an amazing adventure. We got to do so much more, and the locals were so kind to us.”

One thing we all can learn from the Orioles is to not limit yourself. RV rental companies are all over the world. If you can RV across the United States, you can RV in other countries as well. Often these rental companies provide you with help in knowing what to pack, things to see and other helpful tips for seeing their beautiful countries.

In three years, Debbie and Dennis plan on renting an RV in Norway to celebrate their 50th wedding anniversary. “We have learned that traveling by RV in other countries gives you experiences you never would have had if you stayed at hotels,” Debbie mentioned.

The Orioles also enjoy the occasional cruise, and recently got back from one that took them to Hawaii, New Zealand and Australia, but “each time, we couldn’t wait to get back to our RV.” Debbie mentioned.



- GET YOUR LAUNDRY DONE WHERE YOU ARE
- ENJOY A FULL RANGE OF WASH AND DRY CYCLES
- DO BIGGER LOADS WITH A CLASS-LEADING 4 CU. FT. DRYER DRUM

*No laundromat?  
No problem.*

A Splendide RV laundry appliance can grant you the power to turn any laundry day into a wondrous walk in the park. Discover the freedom of RV laundry possibilities, visit [www.splendide.com](http://www.splendide.com) today.

*Vented or Ventedless  
Combos*

**Splendide**  
*Laundry Centers*

~ Since 1984 ~

*Vented  
Stackables*



**The Orioles take their daughter's dog, Iffy, on all their RV adventures.**

### **TRAVELING WITH PETS**

In 2016, their daughter Courtney passed away, and they started caring for her Chinese Crested dog, Iffy. "We are able to bring a piece of Courtney wherever we go because we have Iffy with us," Debbie said with a smile. They have pictures of their family in the RV, but having Iffy brings them comfort. Debbie says, "Iffy will always be Courtney's dog, so we are Omie and Pop to the dog."

Dennis and Debbie always had pets, but they never travelled with them. "Courtney used to take Iffy everywhere she went, so Iffy was used to being in a car and traveling, so transitioning Iffy to RV life was easy," Debbie continued.

Iffy is a hit wherever she goes. She has her own wardrobe since she gets cold easily, and Debbie dyes the little bit of fur she has with nontoxic dog fur dye, which makes the uniqueness of Iffy stand out even more.

**Dennis and Debbie Oriole have embraced RV life and have traveled to every state in the country except for Hawaii.**



Debbie and Dennis also have a tortoise named Winnie. "He has traveled with us, but it depends on the time of year," Debbie commented. Iffy and Winnie get along well and "we have a picture of Winnie crawling up on Iffy while Iffy is sleeping, nothing bothers Iffy when she sleeps," Debbie laughed.

### **TIFFIN'S A+ CUSTOMER SERVICE**

After three Class A motorhomes the Orioles finally bought a 2017 Open Road, their first Tiffin. While driving it over the Rocky Mountains, their check oil light came on. As Dennis was checking the oil, the hood fell off. "We were in the middle of Kansas, and it was a Sunday night. On Monday morning, I called Tiffin to see if they could help us find a repair shop. We knew we were out of warranty but had heard good things about Tiffin's service." Debbie stated.

When Debbie called Tiffin, she asked to speak with Bob. She recalls her conversation with him, "He said, 'Good morning, this is Bob Tiffin.' I explained our situation, and he apologized for what happened. He found a shop 200 miles away in Salina, Kansas, gave us directions and told us to arrive today and use their electric while there."

When they arrived, the RV dealer said, "You must know someone." Bob had taken care of everything and even gave them his credit card information. "We called Bob and told him that wasn't necessary and wasn't why we called him in the first place. While I had him on the phone, I asked if he had any plans to build a Super C. I told him that Newmar had one, and that I would be interested in buying one from Tiffin if they made one. Sadly, at the time Bob had no interest in building a Super C," Debbie said.

Both Dennis and Debbie loved their Class A motorhomes, but Debbie always had her eye on



a Super C. On December 17, 2021, the preview of Tiffin's Allegro Bay Super C was released. "I played that video 30 times," Debbie stated. "Try 100 times," Dennis chimed in laughing.

### **SUPER TIMES IN THEIR SUPER C**

At the Tiffin 50th Anniversary Rally in Rock Springs, Wyoming, in 2022, the Allegro Bay Super C was going to be showcased. "We arrived early, and on the first day I walked up to the salesman and told him that this Super C is going to be mine," Debbie recalled. On June 16, they bought it. "We own Tiffin's first limited edition Super C and the only one that is this mustard color," she said proudly.

They love how it drives, so much that Debbie wants to drive it. "It is a sturdier drive," Dennis said. "We now pick a route we haven't taken and stop at different places along the way. We wing it instead of making plans."

"Whenever you buy the first of anything, there will be a few kinks. Tiffin has been great working with us to sort those kinks out," Dennis said. They removed the booth and added a

workstation for more space and asked Girard to make a custom door awning as well.

"We don't like glamping, we prefer dry camping at state and national parks or on BLM land," Debbie said. They prefer the peace and quiet these campgrounds offer. "We build a fire and watch everyone arrive in the afternoon with a cocktail," she continued.

The Orioles are members of the Elks. "While we stay at their campgrounds, we socialize and meet so many people, many of whom we are still friends with after all these years," Debbie said.

They are also members of the local Long Island Allegro Club, and when they are home, they join in club outings. "Over the years, we have made so many lifelong friends traveling the country. Our Allegro Bay is our home away from home," Debbie said with a smile. 🚐

---

*Carolyn Breinich and her husband, Lee, are full-time RVers and travel in their 2019 Phaeton 40 IH. She has a bachelors in zoology and a masters in recreational therapy. Read her blog, [leukemiagirl.com](http://leukemiagirl.com).*

---

# MEET THE FAMILY

### **Available For:**

- Class A, B, C
- IFS Chassis
- Sprinter Chassis (Coming Soon)



### **Helps Control:**

- Road Wandering
- Side Winds
- Passing Semi-Truck winds
- Oversteering
- Bad Roads
- Front-tire Blowouts

Contact us for Dealer Locations. Or Schedule an Install Appointment at our Factory Centers – Tallapoosa, GA and Ocala, FL

770-322-8727 | [safe-t-plus.com](http://safe-t-plus.com)



**DESTINATION: CHARLOTTE**

# *Welcome to the* **Queen City**

Drive into adventure with these must-see, must-do and must-eat places in Charlotte, North Carolina, which are filled with southern hospitality, style and fun.

**BY MELISSA L. KAUFFMAN**





**T**hese days, you'll spot Charlotte, North Carolina, on all the top 10 lists of best places to live or retire due to its quality of life, affordability and great job market. However, the city also should be on all RVers must-travel-to list. No matter your age or hobby, America's 16th largest city has something for you.

History buffs, like my husband and me, love that Charlotte takes its name and nickname, the Queen City, from King George III's queen consort, Charlotte of Mecklenburg-Strelitz (romance fans may recognize this name from Netflix's "Queen Charlotte: A Bridgerton Story"). The city's county — Mecklenburg — also follows suit.

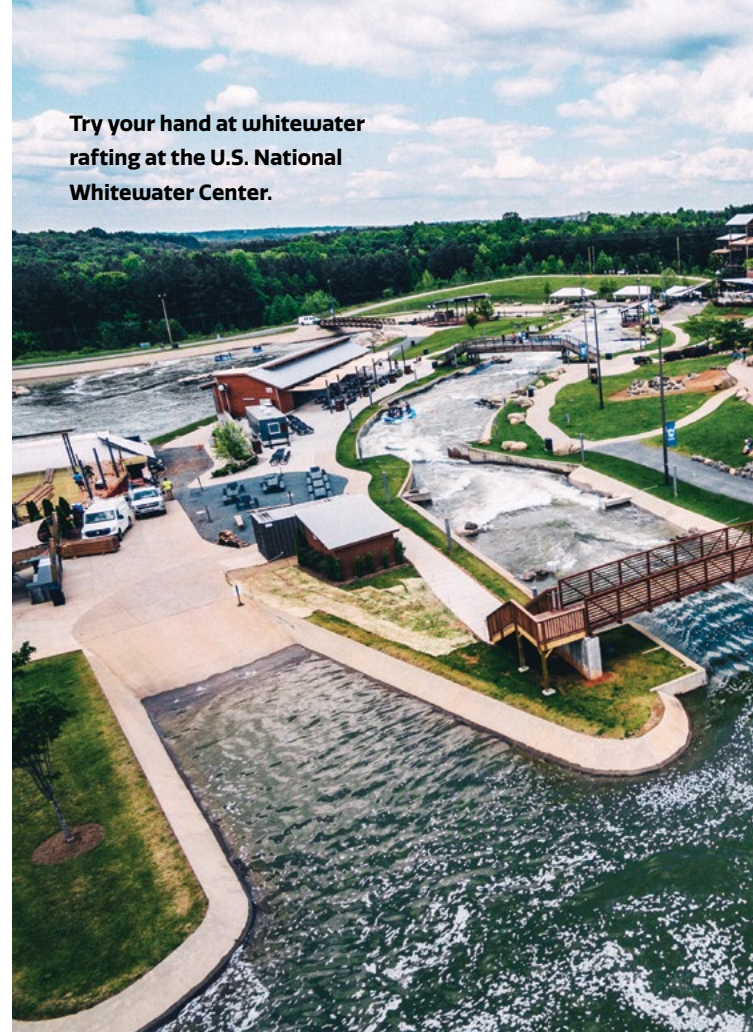
You'll find two statues of Queen Charlotte in her city. A bronze, life-sized sculpture named Queen Charlotte Walks in Her Garden is located at the entrance of the World Trade Center on North College Street. The second statue, which stands 15 feet tall and weighs 2.5 tons, lived just outside the Charlotte Douglas Airport. It has since been removed for cleaning during the airport's current expansion. When the upgrade is completed, the statue will be in the newly expanded terminal lobby.

One of the first things I learned is that the heart of Charlotte is called Uptown, not downtown. The area's main street, Tryon, slants upward to Independence Square where it intersects at the top with Trade Street. Built on this hill, Charlotte stands higher than its surrounding neighborhoods, thus the name Uptown.

Longtime residents repeatedly tell newcomers that Charlotte sits in the perfect location because it is within a half day's drive to the mountains, lakes and ocean. No matter the direction you're coming from, you'll find Charlotte easy to get to. It's located close to the South Carolina border (about 30 minutes), a two hours' drive south of Virginia and a three hours' drive east of Tennessee. Of course, you don't need to leave Charlotte to have plenty to do.

I recommend visiting Charlotte any time of the year, except for July and August because of the heat and humidity. The weather is nice the rest of the time, and Charlotte rarely gets snow.

Here's my list of the coolest things to do and see in the Queen City.



**Try your hand at whitewater rafting at the U.S. National Whitewater Center.**

## **WORLD-CLASS RAFTING**

Don't pass through Charlotte without stopping at the **U.S. National Whitewater Center**, which ranks as my favorite place to take visitors. It sprawls across 1,300 acres by the Catawba River right outside of Charlotte. There are more than 30 different outdoor activities, including whitewater rafting, kayaking, ziplines, hiking, climbing, ropes courses and biking.

It's best known for whitewater rafting on the world's largest manmade whitewater river. If you've never been white-water rafting but would love to learn how, this is a great introductory experience with professional guides. I've taken my sister and nieces and nephews here for their first try, and we all competed to see who could stay in the raft the entire time (my husband won).

Charlotte residents typically get a yearly pass, but visitors can get an adult or youth all-day, all-activity pass or just a single-activity pass. Musical entertainment, fun food, paddle and trail runs happen throughout the summer. During winter, the Whitewater Center



CHARLOTTE/SCOTIA/LOT.COM/KYO H. NAM PHOTOGRAPHY

lights up a special trail in the woods, depicting the history of the center, plus hosts ice skating and hockey on the Upper Pond.

5000 Whitewater Center Parkway; 704-391-3900; [center.whitewater.org](http://center.whitewater.org). Day passes are \$75 for adults, \$65 for youth. Activities are subject to change depending on season and weather.

### A GARDEN FOR NATURE LOVERS

If you love gardens and gardening, don't miss this "garden for all seasons." The **Daniel Stowe Botanical Garden** covers 30 acres of specially created gardens. It's fun to follow the 3.2 miles of walking trails and come upon fountains, statues, and annuals and perennials. The gardens are themed and have names like the Children's Garden, the Scroll Garden, the White Garden and the Four Seasons Garden. Love tropical plants and orchids? Enjoy the special habitat created for them. My favorite is the Butterfly Bungalow, where you can spend a lovely afternoon among these winged insects.

The garden hosts a variety of events and classes throughout the year like Summer



FRANKIE LOPEZ/JUNSPASH

## GETTING AROUND CHARLOTTE

Enjoy Charlotte without driving the RV all through the city. Charlotte expanded its **Lynx Blue Line** (pictured above) light rail system, which provides an easy way to get to, through and from the city. It now has 26 stations (with more coming), ranging from South Charlotte's I-485/South Boulevard Station to UNC Charlotte's Main Campus. It's clean and easy to ride. Just download the CATS-PASS mobile app from the Apple Store or Google Play to buy your tickets.

If you prefer walking through the great outdoors, then step out on the **Mecklenburg County Greenway System**, which is one of the most amazing things about Charlotte. There are 62 miles of developed greenway trails (with more coming). These dog-friendly walking trails take you through wildlife habitats all over the county. You can also bike the trails and there are dog poop bag stations and human bathrooms at specific locations. Check out the trails at [parkandrec.mecknc.gov/places-to-visit/greenways](http://parkandrec.mecknc.gov/places-to-visit/greenways).



JILL LANG/ADOBE STOCK



MELISSA L. KAUFFMAN

**Enjoy Charlotte's scenic routes as you make your way to an RV park like Carowinds Camp Wilderness Resort.**

Lights, Garden Night Group Hike, and Run and Sip and Paint. For those who like shopping, don't miss The Garden Store. It's practically a garden in itself with garden art, décor, books, jewelry, soaps and lotions, honey and other treats.

The garden does not have a restaurant but you can buy snacks at the gift shop. If you want to eat out, try Nellie's Southern Kitchen ([nelliessouthernkitchen.com](http://nelliessouthernkitchen.com)) in Belmont. It's owned by the parents of the Jonas Brothers, and the musical trio have been known to stop by on occasion.

6500 South New Hope Road, Belmont (about a 20-minute drive east of Charlotte); 704-825-4490; [dsbg.org](http://dsbg.org). Tickets are \$15 for adults, \$13 for seniors, \$8 for children, free for 2 and under. Open Wednesday through Sunday, closed on major holidays.

### **A SPORTS' FAN PARADISE**

My husband has a passion for sports and fits right in with Charlotte residents who love their sports teams. All the Uptown stadiums and museums are accessible by light rail (see sidebar on page 69), so leave your RV at the RV park and don't worry about parking.

## ***PET-FRIENDLY PLACES RV PARKS***

**The Charlotte/Fort Mill KOA Journey** is a simple and clean urban campground, conveniently located next to a Publix grocery store. Just a quick drive to Carowinds theme park and located right off the I-77, it's only 20 minutes from Uptown. Like most KOAs, it has the amenities RVers enjoy, such as Wi-Fi, a pool, picnic pavilion and mini golf site. Plus, there is pet playground. Check in is at 3 p.m. (940 Gold Hill Road, Fort Mill, SC; 803-547-5416; [koa.com/campgrounds/charlotte](http://koa.com/campgrounds/charlotte))

If you love to explore our nation's state and national parks, drive over the border to South Carolina to stay at the **Andrew Jackson State Park**, less than 45 minutes from Uptown. We love parking our RV here as it combines history and outdoor activities. There's a lake at this park, and some of the RV spots are lakeside. Learn about President Jackson's boyhood at the museum in the park and check out an 18-century replica schoolhouse along with camping, hiking and fishing. Get your reservation in early as the park has only five paved RV sites and 20 gravel sites. (196 Andrew Jackson Park RD, Lancaster, SC; 803-285-3344; [southcarolinaparks.com/andrew-jackson](http://southcarolinaparks.com/andrew-jackson))

The **Carowinds Camp Wilderness Resort** sits right next door to Carowinds. This 55-acre campground packs in plenty of RV sites and offers its own pool and store. Walk right over to Carowinds or hop on the I-77 and get to Uptown Charlotte in 20 minutes. (14609 Carowinds Blvd.; 704-588-2600, option 4; [carowinds.com/resorts/camp-wilderness](http://carowinds.com/resorts/camp-wilderness))





ZAC GUDAKOV/JUNSPASH

Kicking off with football, the **Carolina Panthers** call the beautiful Bank of America Stadium (800 S. Mint St.) home. We've found there's not a bad seat in this house. Pose in front of any of the impressive six crouching, snarling giant panther statues — named the Indomitable Spirit — guarding the stadium gates. Trust me, they make great Instagram pictures. Ticket pricing varies with \$109 being the average for non-premium seats. Information on the stadium and the Charlotte Panther's game schedule can be found at [panthers.com](http://panthers.com).

Here in Charlotte, we love our soccer. The Queen City recently entered the major leagues with its **Charlotte FC** (football club), founded in 2019. The team competes in the Eastern Conference and plays at the Bank of America stadium, too. Ticket prices vary, although I've seen them for as low as \$15. Get more information at [charlottefootballclub.com](http://charlottefootballclub.com).

More into hoops? Charlotte slam dunks that sport, too, with the **Charlotte Hornets**,

a member of the NBA's Eastern Conference. We've taken our basketball-loving family members to a Hornet's home game at the Spectrum Center (333 East Trade St.) in Uptown. Ticket prices vary, with an average price of \$46. Find the game schedule and tickets at [spectrumcentercharlotte.com](http://spectrumcentercharlotte.com).

If you have a passion for cars, get up to speed on the history of NASCAR at Charlotte's **NASCAR Hall of Fame** museum (400 East Martin Luther King Jr. Blvd.) in Uptown. You'll find hands-on interactive exhibits along with a state-of-the-art theater, NASCAR Hall of Fame Gear Shop and a NASCAR Productions-operated broadcast studio. Tickets start at \$36. Hours and info at [nascarhall.com](http://nascarhall.com).

### **CELEBRATE "AMERICA'S PASTOR"**

Evangelical and history lovers have made the 40,000-square-foot **Billy Graham Library**, which shares the mission of "America's Pastor," one of the top visitor spots in Charlotte. You'll find multimedia presentations

**The Carolina Panthers and Charlotte FC play at Bank of America Stadium in Uptown Charlotte.**



BERNARD GOTFRY/LIBRARY OF CONGRESS

**Billy Graham was known for his indoor and outdoor rallies and crusades that were often broadcast on radio and television. It's estimated that he reached billions of people.**

and a variety of exhibits organized around these four themes: The Man, The Message, The Ministry and The Mission. The tour only takes about 90 minutes to complete.

My friends and I particularly liked learning about how Graham provided spiritual counsel to many world figures, including 12 U.S. presidents. You can also see Graham's beautifully restored childhood home, which is part of the library complex. I recommend visiting during the holidays when the library celebrates with a beautiful tree, music and an actual live nativity.

4330 Westmont Drive; [billygrahamlibrary.org](http://billygrahamlibrary.org). Admission and parking are free. There is RV parking! The library is closed on Sundays and holidays.

### **CARRIED AWAY AT CAROWINDS**

Another favorite for any visiting family to Charlotte is **Carowinds** amusement park, which is located about 20 minutes south of Charlotte. Although known for its spectacular roller coasters — fan favorite is the steel coaster called Fury 325 — it offers more than 60 different rides, including Camp Snoopy's attractions for young children.

During the hot summer months, visitors can jump into the **Carolina Harbor**, the largest water park in the Carolinas with wave

pools, cabanas and extreme water slides, which is included as part of the daily ticket. Carowinds and Carolina Harbor stay open all summer from June to August, then expand to select days year-round.

If Halloween is your favorite holiday, say yes to "SCarowinds," which takes place on select nights from September through the end of October. What better way to be spooked than being chased by zombies and vampires, finding your way through haunted mazes and scary zones, enjoying not-so-alive entertainment and, of course, braving spooktacular rides all under the cover of darkness?

If you have young children, they'll enjoy the Great Pumpkin Fest, which takes place Saturday and Sunday from September through October, and offers family-friendly fun with a bit of boo!

On select nights from November to January 1, the holidays descend on Carowinds with magical lights displays, ice skating, seasonal entertainment, gift shops and select attractions.

14523 Carowinds Blvd.; 704-588-2600; [carowinds.com](http://carowinds.com). Ticket prices vary by event. Summer daily tickets start around \$45.

### **A WORLD OF DISCOVERY**

If children are along for the ride on this trip, satisfy their curiosity at Charlotte's



ALEX WARE/UNSPASH

science museum — **Discovery Place Science.** Wander through three floors of featured and permanent exhibits, guaranteed to keep you entertained. I recently spent several hours with my niece, nephew and husband playing tug of war, laying on a bed of nails, and viewing a tropical jungle, fantastic frogs and amazing aquarium displays. We also checked out the recent featured exhibit, “MARVEL: Universe of Super Heroes.”

Looking for something interactive? The museum puts on live shows and labs, too. Top it off with the 79-foot screen and 12,000 watts of sound at the Accenture IMAX Dome Theatre, where you can see some of today’s latest top movies, as well as thought-provoking films like “Serengeti: Journey to the Heart of Africa” and “Antarctica.”

301 N. Tryon St.; 704-372-661; [discoveryplace.org](http://discoveryplace.org). Tickets are \$28 for adults, \$23 for children and free for kids under 2. The featured exhibit and Accenture IMAX Dome Theatre have separate hours and ticket prices. 🚗

---

Melissa L. Kauffman is the former editor of *Dogster* and *Catster* magazines. For the past 10-plus years, Melissa and her husband have vacationed in their RV, traveling around the country with their dogs and parrots. They live in Charlotte and have future plans to RV to North Dakota and Vermont.

## GOOD EATS!

One of the best things about visiting a new place is trying the local food and making some amazing food-eating memories. Bring your taste buds and try these four restaurants that I love and my visitors enjoy too.

**BEST CAFÉ: Amélie’s French Bakery and Café** — Pastries, specialty coffee and tea, soups, sandwiches and desserts — all of this wrapped up in a café full of whimsy. You’ll love the décor — art, sculptures, funky mismatched seating — and will be snapping away with your phone as you enjoy a café mocha and pastry. I love the croissants, Amélie’s Signature Chicken Salad Sandwich and the matcha latte. There are four locations in and around Charlotte and one just over the border in Rock Hill, South Carolina, all with their own personal touch. (*flagship restaurant located at 136 E. 36th St.; [ameliesfrenchbakery.com](http://ameliesfrenchbakery.com)*)

**BEST BARBECUE: Midwood Smokehouse** — This local Carolina chain consistently makes it on the “Best of Charlotte” lists voted on by locals. My husband and I dine here every Sunday like clockwork. We recommend the Fixin’ to Chicken pulled-barbecue chicken salad topped with chipotle ranch dressing, the Prime Beef Brisket or Burnt Ends (caramelized bits of brisket



CHARLOTTESCOTALOT.COM/KYO H. NAM PHOTOGRAPHY

tossed in cola barbecue sauce). For dessert, you can’t go wrong with the Nutty Pecan Cobbler and Vanilla Bean Ice Cream. The restaurants are easy to find with six different locations — three in Charlotte. (*[midwoodsmokehouse.com](http://midwoodsmokehouse.com)*)

**BEST BREWERY: Olde Mecklenburg Brewery** — If you have the dogs along (or even if you don’t), you’ll love Charlotte’s oldest brewery in a city that’s known for its breweries. It’s home to the largest beirgarten, or beer garden, in the Southeast, where you can take your leashed dogs, sit at a picnic table, get a delicious sausage (we like the bratwurst) and sample a variety of the OMB core or seasonal beers. I love the OMB Copper so much that it has soured me on all other beers. There is an inside restaurant along with the outside beirgarten for those who prefer nice, cool air-conditioning. (*4150 Yancey Road; [ombbeer.com](http://ombbeer.com)*)

**BEST SOUTHERN COOKING: Mert’s Heart & Soul Restaurant** — One of Charlotte’s favorite restaurants, this family-owned eating spot has been around since 1998. The menu lures you in with Low Country and Gullah-inspired food. Mert’s Famous Salmon Cakes is one of the favorites on the menu, but I also recommend the fried green tomatoes, cornbread, fried catfish and the mac and cheese. (*214 North College St.; [mertscharlotte.com](http://mertscharlotte.com); closed on Sundays*)

# Come to a Rally!

**W**hat a year it has been! We have just completed our third rally of the season (read about our April 2023 rally at Lake Wales, Florida, on page 32), and we are excited to announce the 2024 Tiffin Allegro Club rally lineup!



As an Allegro Club member and Tiffin Class A, Super C, Class C or Class B motorhome owner, attending our rallies is the perfect opportunity to connect with other owners, meet new people and create lasting memories. With a wide range of activities, entertainment, seminars and delicious food, there's something for everyone.

Vendors offer a variety of different products for purchase, while OEM service providers and Tiffin service technicians are available to perform minor services and repairs. The educational seminars, presented by some of the best in the RV industry, will give you the chance to learn something new.

But that's not all! You'll also get a sneak peek at the latest Tiffin coaches, which will be on display, and even test drive them, if you choose. Plus, with the friendship and support of fellow Tiffin owners and staff, you'll feel right at home no matter where your travels take you. So, grab your calendars, mark the dates and get ready to hit the road to make unforgettable memories together!

**Lisa Smith**  
President, Tiffin Allegro Club

---

## 2024 TIFFIN ALLEGRO CLUB MEMBER RALLIES

**Florida:** Monday, April 22, to Friday, April 26, 2024 (departing Saturday, April 27)

**Colorado:** Monday, August 5, to Friday, August 9, 2024 (departing Saturday, August 10)

**Casa Grande, Arizona:** Monday, October 21, to Friday, October 25, 2024 (departing Saturday, October 26)

Please be advised that rally dates, locations, and lottery application dates are subject to change. Complete rally details and registration information will be announced prior to each registration date, so monitor the following media pages for up-to-date information.

- Tiffin Allegro Club Facebook page:  
[www.facebook.com/tiffinallegroclub](http://www.facebook.com/tiffinallegroclub)
- Tiffin Side Roads News page:  
[tiffinsideroads.com/](http://tiffinsideroads.com/)
- Tiffin Allegro Club website:  
[www.tiffinmotorhomes.com/allegro-club](http://www.tiffinmotorhomes.com/allegro-club)



At the April 2023 Lake Wales rally in Florida, Bob Tiffin points out the controls in the Allegro Bus.

STEVE BLUME

## WHAT'S HAPPENING IN RED BAY

At Tiffin Allegro Club, we are dedicated to improving our services and facilities to ensure our owners have a comfortable place to stay while in Red Bay. We have been under construction for several months to add additional lounge space, including a few workstations for owners who still work during the day, an outdoor seating area and a new dog park across from the campground check-in office. Our customers can now enjoy the new pet lounge at the Bob Tiffin Service Center.

We are happy to announce that the downtown Tiffin General Store has merged with the Tiffin Allegro Club to offer a variety of parts, accessories and Tiffin merchandise. We understand that our current renovations and construction may cause some inconvenience, and we appreciate your patience and understanding as we continue to make changes and improvements. We look forward to sharing our space and welcoming you to the Tiffin Allegro Club and hope you enjoy these new updates.

## TIFFIN ALLEGRO CLUB GENERAL STORE IS NOW ONLINE!

The wait is over! Our online store is finally open! You can now shop for lifestyle parts, accessories and Tiffin merchandise while on the road or at home. Head over to [tiffingeneralstore.com](http://tiffingeneralstore.com) and start browsing our extensive collection. From T-shirts to aftermarket parts and accessories, we have something for everyone. And the best part is that we offer local pickup. If you are in or traveling to Red Bay, just place your order and select "pickup," and we will have it ready within 24 hours.

Follow us on Facebook  
**@tiffinmotorhomes**

**Magne Screen™** is the exclusive magnetic awning drop shade for automatic awnings.

**Magne Screen**  
by Hunckler Fabrication LLC  
PATENT PENDING

**Magne Shade®**  
by Hunckler Fabrication LLC  
PATENT PENDING

**MagneShade.com**  
**336-753-0905**

@magneshade  
f i



STEVE BLUME

In addition to educational seminars and opportunities to learn more about your motorhome, Tiffin rallies offer exciting outings and fun activities like this patriotic parade to honor veterans during the Lakes Wales rally in Florida.

MADE IN AUSTRIA

**axelbloom** **BEDS**

german schlafsysteme

**Starting at  
\$898!**

**The most Comfortable & Custom size German adjustable bed for RVs, Sprinters, and 5th Wheelers.**

**2019**  
Tiffin Allegro Bus 45OPP  
Custom King Doppelflex  
MX2, Two-Motor  
Adjustable System

**2022**  
Tiffin Allegro Bus 40IP  
Custom King Doppelflex  
MX2, Two-Motor  
Adjustable System

**2020**  
Tiffin Wayfarer  
Custom Queen Doppelflex  
MX2, Two-Motor  
Adjustable System

**VETERAN & SENIOR DISCOUNTS**

**MORE INFORMATION:**  
866-696-8387

**LUXURYRV.AXELBLOOM.COM**

**QUALITÄT GERMAN technologie**

**BBB A+ rating**

**f**

**ARE YOU A MEMBER OF THE TIFFIN ALLEGRO CLUB?**

Did you know the Tiffin Allegro Club is the official owners club for Tiffin Motorhome owners? In March 2023, we celebrated our 45th anniversary with a little over 17,000 members!

The Tiffin Allegro Club is open to and welcomes all Tiffin Class A, Class B and Class C owners to join.

We have partnered with several industry leaders as benefit partners to offer our members discounts on some of the best products and services available in the industry. Below are just a few:

- Michelin Advantage Tire Program
- Insurance Services Discounts
- SafeRide Roadside Assistance
- Medjet Travel & Medical Evacuation Plans
- RV SnapPads®
- Teddy's Zippered Sheets
- Harvest Hosts

- Adventure Caravans RV Tours & Rallies
- Byrna Technologies Self-Defense Products
- Cutco Cutlery
- My RV School
- Red Bay Shuttle Service

In addition to the benefits listed above, as an Allegro Club member, you can register for Tiffin rallies hosted nationwide. Each rally includes the following:

- Camping fees
- Entertainment
- Some meals
- Games and prizes
- Planned activities
- Access to vendors
- Educational seminars
- Tiffin techs (when available) to do minor repairs for rally attendees
- New display units
- Representatives from Tiffin to answer questions about your motor home, and much more!

### JOIN THE CLUB

**New Tiffin Owners:** The first year of your Tiffin Allegro Club membership is paid by Tiffin with the purchase of a new, untitled Tiffin Motorhome. To activate your membership, call the Tiffin Allegro Club office at 256-356-8522.

**Pre-Owned Tiffin Owners:** If you purchased a pre-owned motorhome, we offer a one-year membership for \$25, two years for \$46 and three years for \$65.

Please visit the Tiffin Allegro Club website at [tiffinmotorhomes.com/allegro-club](http://tiffinmotorhomes.com/allegro-club) and click the “Join/Renew” button to register.

### ARE YOU RECEIVING NEWS AND UPDATES?

It has been brought to our attention that there are many “unofficial” Tiffin Facebook pages online that are preventing

information from being shared and posted by Tiffin employees. To ensure that you are receiving important announcements from the main Tiffin office and the Tiffin Allegro Club, such as factory news, technical tips, facility updates, upcoming rallies and events, new benefit partners and discounts, we invite you to like our Facebook pages:

- Tiffin Motorhomes page: [facebook.com/tiffinmotorhomes](https://facebook.com/tiffinmotorhomes)
- Tiffin Allegro Club page: [facebook.com/tiffinallegroclub](https://facebook.com/tiffinallegroclub)
- Tiffin Red Bay Roll Call page for Red Bay Service and Campground news: [facebook.com/groups/tiffinredbayrollcall](https://facebook.com/groups/tiffinredbayrollcall)

Sign up to receive our newsletter at [tiffinsideroads.com](http://tiffinsideroads.com). 📧



**Fall in love this Fall.**

Make Fairhope Motorcoach Resort your destination in the quaint town of Fairhope, Alabama for your getaway this Fall. Relax in our pool or take in the wonderful breeze along Mobile Bay. Fairhope not only offers a wide array of dining choices, but is the envy of the South with it's shopping experience. Visit our website today to check availability of Rental Sites and Ownership opportunities so you too can *travel far & live local.*

**BOOK NOW FOR YOUR 2023 FALL STAY.**  
Visit [FairhopeMotorCoachResort.com](http://FairhopeMotorCoachResort.com)  
251.622.2340

### **TV AND REFRIGERATOR UPDATES**

We own a 2010 Allegro Open Road 35QBA on a Workhorse chassis that we bought new. We have two questions about updating our coach.

1. Can the surround sound be activated for watching regular TV shows and not just DVDs? The TV in the living area is a Panasonic TC-L32X1. The entertainment system is a Panasonic DVD Home Theater Sound System SC-PT464. If so, how?

2. Our gas-electric refrigerator went out last year. We replaced it with a standard residential refrigerator. Should I replace the converter with an inverter? If so, what batteries should I use?

**Sloan and Pam Trigg  
Beaumont, Mississippi**

*With the main TV on, you should be able to hear it through the surround sound. With the home theater powered on, use the home theater remote and under input, select D-IN. This will allow the audio to play through the home theater.*

*On your residential refrigerator, you will need to install an inverter and four 6-volt batteries. We recommend GC2 batteries.*

### **POWER NOT GETTING TO DISHWASHER**

We have a 2022 Allegro Bus 45FP. The dishwasher only functions when plugged into shore power. The inverter or generator does not provide power to the dishwasher. This leaves us unable to use or lock the dishwasher for travel. I think that the Spyder EMS is preventing the power from getting to the DW. Am I right?

**Mitchell Dennett  
Warren, New Jersey**

*Yes, it is possible that the Spyder control EMS may be “shedding” the load when it’s not on shore power. Please call our electrical service department (256-356-0261, ext. 3936) so we can help you directly.*

### **MISALIGNED DOOR LATCHES**

I have a 2014 Phaeton 36GPH. The storage doors do not latch and apparently are out of alignment. What is causing this problem?

**Chat Peterson  
Oak Grove, Minnesota**

## ***OUR TECH TEAM IS HERE FOR YOU!***

Our tech team in the Tiffin Service Center welcomes your questions. To send a question, especially those that may be useful to all our readers, go to [rismag.org/contact/techtalk](http://rismag.org/contact/techtalk) or email [RoughingItSmoothlyMag@outlook.com](mailto:RoughingItSmoothlyMag@outlook.com) and put “Tech Talk” in the subject line. Or mail questions to:

Tiffin Allegro Club  
c/o Tiffin Tech Talk – Roughing It Smoothly  
902A Gates St.  
Red Bay, AL 35582

Include a self-addressed, stamped envelope if you would like any photos or other materials returned.

For urgent questions and problems, call the Parts and Service department at **256-356-0261**.

*You probably need to adjust the latch up or down (or possibly in or out) to get the doors to latch again. They probably have just moved over time from the movement of the coach going up and down the road.*

### **ELECTRICAL PROBLEMS**

I have a 2010 Phaeton 36QSH. Several electrical issues have been ongoing for at least four years. On our trip to Death Valley in February 2023, we were dry camping for seven days and used the inverter for the refrigerator and generator daily to recharge the batteries and for the microwave.

The Xantrex inverter (model RV3012CS) panel showed full power with 13 bars in the display. Batteries were new on April 4, 2022 (6 model INT-GC2-HD-AGM batteries).

While on the inverter, the electric coffee pot “fried” and will not work. There was a surge protector at the plug for the coffee pot.

While on the inverter, we had to stop all electrical use to make it through the night and to prevent the low battery alarm from going



off around 5 a.m. The only draw on the system was the refrigerator. We ended up turning off the inverter each night so the low battery alarm would not go off. When the alarm did go off, there were eight bars showing for the charge.

The GFI switches hum all the time while on the inverter. We tracked this issue for five days. Here's an example of one day:

- We started the generator at 10:08 a.m. and there were four bars on the inverter display with an error light.
- At 11:40 a.m., there were eight bars.
- At 12:20 p.m. there were 13 bars.
- At 2:55 p.m., the meter read 13.36 amps on the house analog display.

Last year, we had an electric space heater fry while plugged into shore power. This was on a different GFI circuit than the coffee pot mentioned earlier. All these issues are with the 120-volt circuits.

**Michel Adamson**  
**Poway, California**

*Sounds like a control board issue with the Xantrex. I recommend reaching out to Xantrex (800-670-0707) to discuss these issues.*

*I do know that most inverters, no matter the manufacturer, are sensitive to some coffee pots and space heaters.*

*If Tiffin were to troubleshoot the issue, we would first break the inverter away from the circuit then try to bypass the inverter circuit.*

## **LEVELING SYSTEM IRREGULARITIES**

I own a 2015 Allegro Breeze 32BR and have noticed that the front air bags are lowering the RV after a few days of parking it in storage. Normally, the RV doesn't change from travel mode height when it stays in storage. The leveling system is working well. I have checked underneath and can't find any air leaks on the air bags. Is there something that I can do to prevent this from happening? Before each trip, I have to run the compressor to bring the RV back to level. This only happens to the front of the RV, especially the driver side.

When I first contacted Tiffin service, the representative said that this is normal and not to worry about driving the RV. The engine compressor would keep the air pressure at 125 psig on both tanks. We went on the trip and everything went well on the road. However, when we parked, the leveling system kept

shutting off the pump that maintains the RV level. Periodically, we would start the engine, bring it to travel mode and then level the RV.

When it gets warmer, I will check for leaks again on the connections that are accessible. Where should I start and are engineering drawings available of the air suspension system? The RV has 27,550 miles on it presently.

**James Rodda**  
**Georgetown, Texas**

*This coach has an HWH air-leveling system. After the coach has been leveled, the HWH system is designed to recheck the level status every few hours and make adjustments if necessary. The air pressure to provide those adjustments is supplied by an electric air compressor that is mounted on the passenger side of the firewall.*

*Your description of events indicate that the electric compressor is not operating or can't produce the air pressure that is required. I would start by checking the wiring to the electric compressor to be sure you have battery voltage and ground to the relay that is mounted on the compressor.*

*If you have no battery voltage at the relay, there is an inline fuse in the positive cable to the compressor that should be checked. If you do have battery voltage and a good ground at the compressor relay, then it is possible the relay or control wire to the relay is defective. It is also possible that the compressor itself has failed.*

*Our chassis service team can provide system drawings, and air system schematics if you need further help with diagnosis.*

## **WHERE IS THE DIAGNOSTIC PLUG?**

Is there a J1939 diagnostic plug up front on my 2000 Allegro Bus 34? If so, where would it be located? I have not been able to find it.

**Ascension Rodriguez**  
**Natalia, Texas**

*This is only diagnostic plug that I know of. It's located on the rear of the coach. 🚐*



**NEWS YOU CAN USE**  
*Continued from page 8*

hose that connects to the LPG regulator to the LP tank is leaking at the swivel joint. A leak in the connection of an LP hose installed on a motorhome could result in a fire or explosion as well as serious personal injury, property damage or both.

**NHTSA Recall #23V-104, Tiffin Recall #TIF-128, Cahaba suspension springs:** Tiffin Motorhomes has decided that a defect, which relates to motor vehicle safety, exists on the following models of motorhomes — **2021 and 2022 Cahaba 19SC Motorhomes built between May 2021 and April 2022, and equipped with up-graded suspension springs.** Tiffin Motorhomes has become aware of the possibility that on these motorhomes, the upgraded front suspension springs are incorrectly installed by Tiffin Motorhomes and that the upgraded rear suspension springs are incorrectly sized. On 4WD units, improperly installed front suspension springs may cause damage to the front 4WD axles, which could lead to an increased risk of a crash. On 2WD units equipped with upgraded front suspension springs, the suspension will not function as designed.

**NHTSA Recall #23V-297, Tiffin Recall #TIF-129, Cahaba tire carrier and Molle rack installation:** Tiffin Motorhomes has decided that a defect, which relates to motor vehicle safety, exists on the following models of motorhomes — **2021 and 2022 Cahaba 19SC Motorhomes built between May 2021 and April 2022, and equipped with a spare tire carrier and/or Molle rack.** The tire carrier and Molle rack may not be in-

stalled properly and may become loose or detached from the rear doors of the motorhome. If the spare tire carrier and Molle rack were to become loose or detach from the mounting location, this could lead to an increased risk of a crash.

**NHTSA Recall #23V-308, Tiffin Recall #TIF-130, refrigerator pan may overflow onto electrical connections:** Tiffin Motorhomes has decided that a defect, which relates to motor vehicle safety, exists on the following models of motorhomes — **2020, 2021, 2022 and 2023 Allegro Breeze motorhomes built between July 2019 and April 2023.** The condensation pan located under the refrigerator can become full of water and may overflow onto electrical connections located on the floor. If the condensation pan were to completely fill, water could overflow onto the Molex connections, which could cause a fire.

**NHTSA Recall #23V-406, Tiffin Recall #TIF-131, PowerGlide A/C compressor failure causes loss of drive power:** Tiffin Motorhomes has decided that a defect, which relates to motor vehicle safety, exists on certain **2022 and 2023 Allegro Bus, Phaeton and Zephyr motorhomes built between May 2022 and May 2023.** On certain motorhomes equipped with an IFM brand of chassis controller, in the event of an A/C compressor failure, the current draw spike from the compressor will blow the fuse protecting the circuit. This circuit also supplies power to the chassis ignition switch. In the event of an A/C compressor failure, there would be a sudden loss of power to the chassis. If the chassis were to lose power, there would be an increased risk of a crash. 🚗



## CONTACT US!

**Letters to the Editor:** To send us comments or questions about the magazine, please email [RoughingItSmoothlyMag@outlook.com](mailto:RoughingItSmoothlyMag@outlook.com) and put "Letters" in the subject line.

**Recalls:** For questions about recalls that may apply to your coach, please email [recalls@tiffinmotorhomes.com](mailto:recalls@tiffinmotorhomes.com).

**"From the Road" travel stories:** We love hearing from Tiffin owners and invite you to share the special places you have discovered during your travels. Tell us about where you've been, including the your favorite parks, restaurants, fishing spots, hiking trails, attractions, festivals, or just share a neat story. Go to [rismag.org/contact/travelstories](http://rismag.org/contact/travelstories) or email [RoughingItSmoothlyMag@outlook.com](mailto:RoughingItSmoothlyMag@outlook.com) and put "From the Road" in the subject line. Please share photos, too!

**Tech Talk:** The Tiffin Tech Team welcomes your questions and will address them with experts and specialists in the Tiffin Service Center. To send a question, especially those that may be useful to all our readers, go to [rismag.org/contact/techtalk](http://rismag.org/contact/techtalk). You can also email [RoughingItSmoothlyMag@outlook.com](mailto:RoughingItSmoothlyMag@outlook.com) and put "Tech Talk" in the subject line.

# ROAM WITH EASE

**NOW AVAILABLE IN  
THE UNITED STATES  
AND CANADA**



***THE BEAUTY OF THE OPEN ROAD IS THAT IT BEGS US TO EXPLORE IT.  
MAKE THE JOURNEY ON TIRES YOU TRUST.***

**TIFFIN ALLEGRO CLUB MEMBERS—GET ON THE ROAD TO SAVINGS.**

- Consistent Pricing—Pay the same price on new RV tires at all authorized Michelin RV Tire Dealers.
- Convenient Payment Options—Pay with any VISA®, MasterCard® or American Express® credit or debit card.

*Special Advantage Program Pricing on Michelin RV tires at home and on the road.*

See the full lineup at [MichelinRVTires.com](https://www.MichelinRVTires.com).



# GREEN MEANS PEACE OF MIND.

The drinks? Cold. Temperature? Just right. Your pet? On cloud 9. That's life with the EC-AGS+ Wireless RV Auto Generator Start System. Using your smartphone, the system enables automatic, manual or voice-activated start, climate monitoring and key maintenance reminders. Plus, your batteries are charged and topped off before quiet hours. Easily install the EC-AGS+, and you'll never think about your generator again.

Now available at [shop.cummins.com](http://shop.cummins.com)  
Learn more at [cummins.tech/EC-AGS](http://cummins.tech/EC-AGS)



The EC-AGS+ works with nearly all Green Onan RV generators.  
(except Onan QD 3200)



**FOR  
A WORLD  
THAT'S  
ALWAYS ON™**