

SUPER-C

ALLEGRO BAY

MODEL YEAR 2023 | PRODUCT UPDATES

Initial MY2023 Model Change Plans, Subject to Change in Full Production

Date Revised: 9/15/22

TIFFIN

20
23

What's New Summary - Allegro Bay

WHAT'S NEW

-
- | | | |
|---|--|---|
| • Two New Fabric Suites (Stoney Creek & Soft Suede) | • Removed Molded-in Shower Seats | • Updated Dinette Computer Workstation Option |
| • Two New Ultraleather Colors (Trail & Taupe Hills) | • Updated Dinette Boothe Seating for Lift Up Seat Storage Access | • Side-by-Side Washer and Dryer on 38 AB |
| • Sea Grass Luxury Vinyl Tile | • New Wi-Fi Booster | • Chrome Dryer Vents |
| • 50th Anniversary Decal | • Cellular Signal Booster Now Available | • New Overhead Bunk TV Option |
| • 50th Anniversary Exterior Paint Color Package | • New 14.5' Lippert™ On-The-Go™ Ladder Option | |

NO LONGER AVAILABLE

-
- | | |
|---|---------------------------------|
| • Silver Light III & Urban Putty II Fabric Suites | • Sand Castle Luxury Vinyl Tile |
| • Belgian and Cocoon Ultraleather Colors | • Combo Washer-Dryer on 38 AB |

Premium Paint System

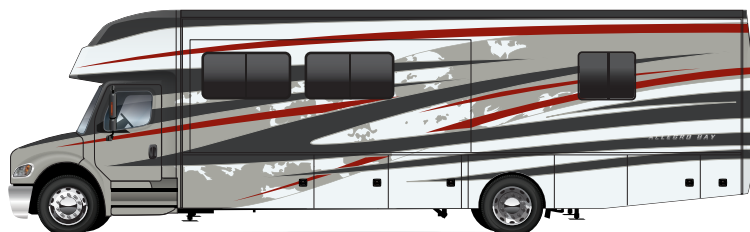
Our eight-step, full-body paint system features premium grade paints sealed with three layers of clear coat with ultraviolet protection. An additional layer of high-performance film protects the front of the coach and select areas.

Images shown are representations of paint layouts and colors only and do not reflect all exterior features or options.

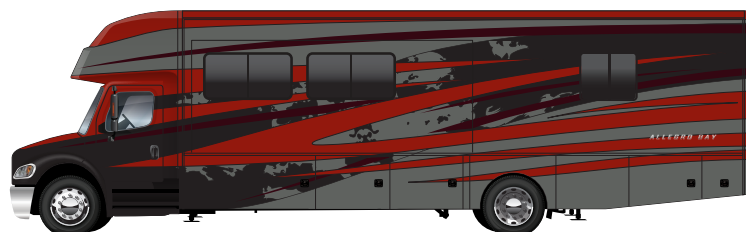


50TH ANNIVERSARY

NEW



G1 BARCELONA



G1 FIRE OPAL



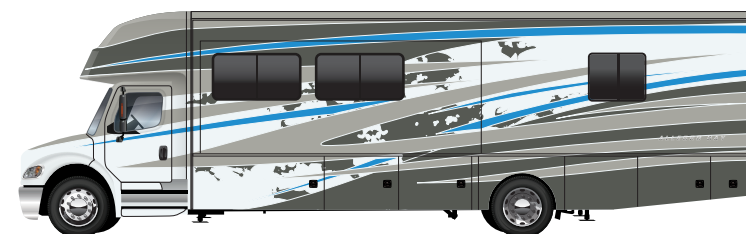
G1 NASA



G1 FROSTED GRANITE



G1 WHITE MAHOGANY



G1 GLACIER BLUE

38 AB

38 BB

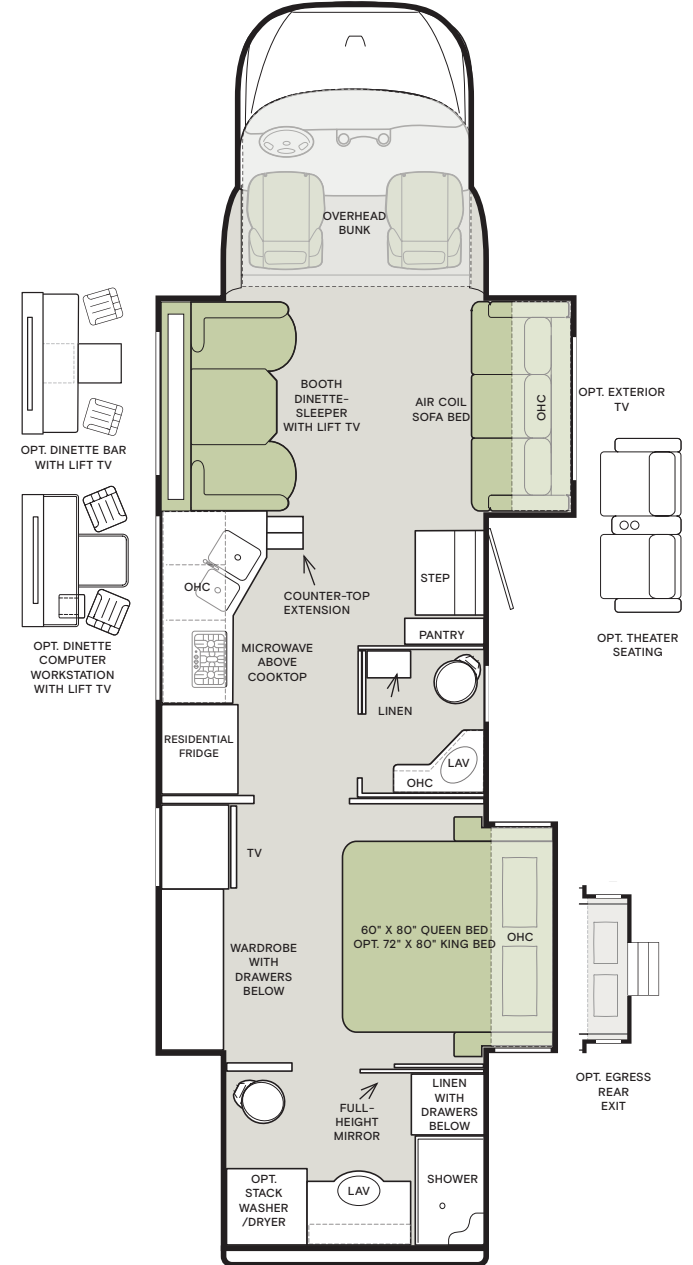
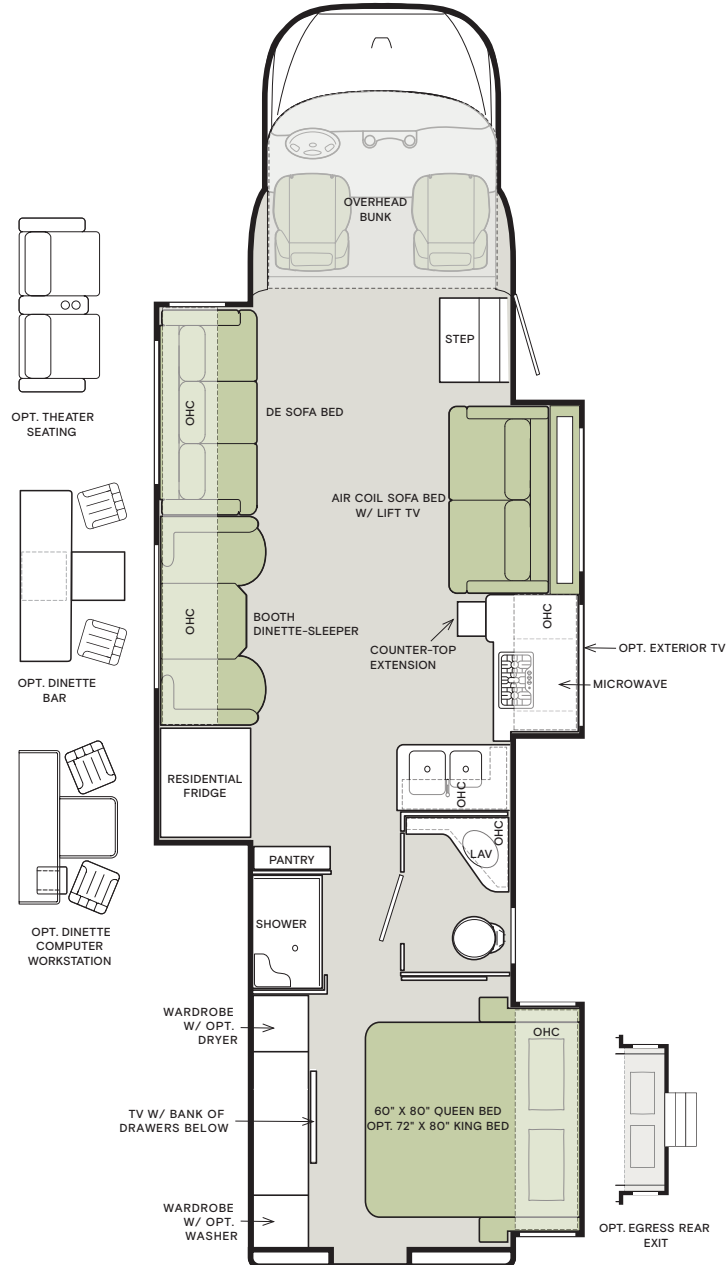


The design of every Allegro Bay floor plan must meet four essential criteria: Maximum space, Optimal organization, Relaxation plus, and Elegant atmosphere. Tiffin's MORE Plans offer your family the most comfortable layout for life on the road.

If optional furniture combinations are selected, window locations may vary from diagram shown.

All options may not be available in every model. Because of progressive improvements and specifications, standard and optional equipment are subject to change without notice or obligation.

For a complete and up-to-date list of available options and specifications, visit tiffinmotorhomes.com.

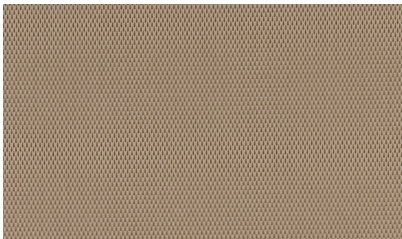


Interior Décor

Make your experience on the road all your own. Express yourself by choosing the interior appointments such as cabinet finishes, flooring, and décor ensembles for every part of your motorhome. In the 2023 Allegro Bay, you'll be able to go in style no matter where you go.

Because of progressive improvements and specifications, standard and optional equipment are subject to change without notice or obligation. For a complete and up-to-date list of available options and specifications, visit tiffinmotorhomes.com.

ULTRALEATHER



TRAIL

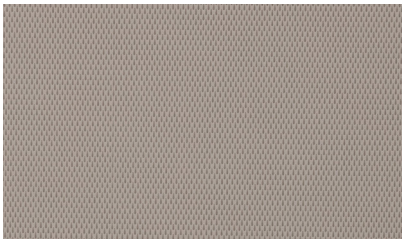
NEW

CABINETS



SANDSTONE

NEW



TAUPE HILL

NEW



SHADOW

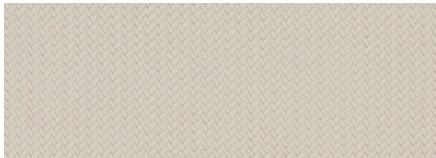
FLOORING



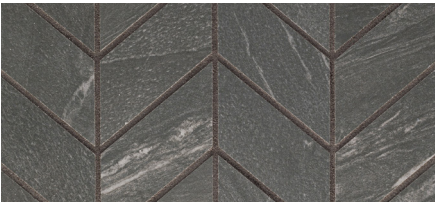
SEA GRASS Matte Finish Tile

NEW

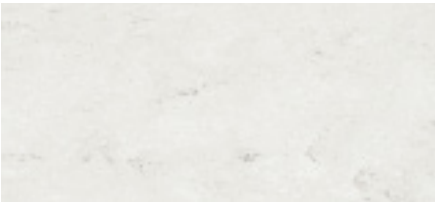
STONE CREEK NEW



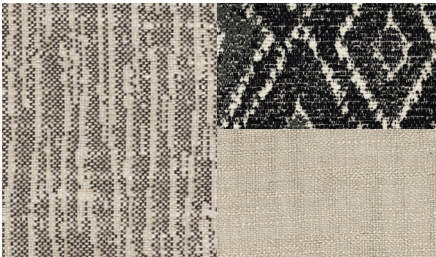
WINDOW TREATMENT



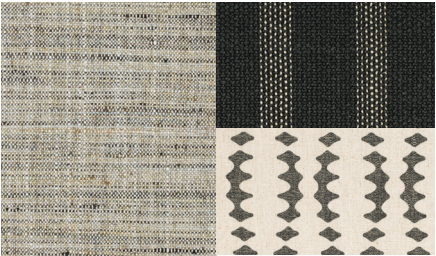
BACKSPLASH



COUNTERTOP

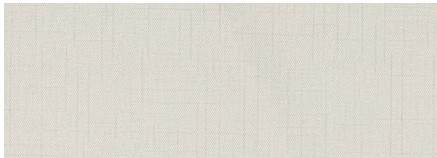


LIVING ROOM

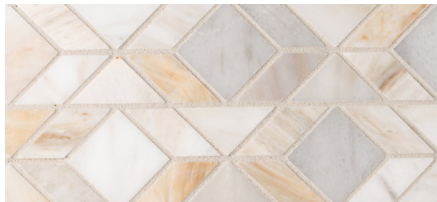


MASTER SUITE

SOFT SUEDE NEW



WINDOW TREATMENT



BACKSPLASH



COUNTERTOP



LIVING ROOM



MASTER SUITE

Specifications, Features, and Options

KEY : S : Standard Feature | O : Optional Feature; Additional costs may apply | D : Dependent Feature; Feature is bundled with another optional feature | — : Not Available

WEIGHTS AND MEASURES	38 AB	38 BB
DIMENSIONS		
Overall Length (approx.) ¹	39' 4"	39' 4"
Overall Width ¹	101"	101"
Overall Height	13' 3"	13' 3"
Minimum Garage Height	14'	14'
Interior Height	82.5"	82.5"
Interior Width	96"	96"
Basement Storage (cubic feet, approx.)	136	114
Wheel Base	279"	279"
WEIGHT LIMITS		
GAWR-Front (pounds)	12,000	12,000
GAWR-Rear (pounds)	21,000	21,000
GVWR (pounds)	33,000	33,000
Maximum Trailer Weight (pounds) ²	12,000	12,000
Hitch Rating (pounds)	12,000	12,000
GCWR (pounds)	45,000	45,000
CAPACITIES		
Fuel Tank (gallons)	100	100
DEF Tank (gallons) ³	10	10
Fresh Water (gallons)	150	150
Grey Water (gallons)	70	70
Black Water (gallons)	45	45
LPG Tank (gallons)	24	24

¹ The approximated coach width and length does not include side-view mirrors and rear ladders.
² Maximum Trailer Weight is dependent on the loading and towing variables which include the GVWR, GAWR and GCWR,as well as adequate trailer brakes.
³ Diesel Exhaust Fluid (DEF) is the active component used in Selective Catalytic Reduction (SCR) engines to reduce nitrogen oxide emissions by 90% to meet EPA standards.

CHASSIS AND DRIVETRAIN			
<div><div><ul style="list-style-type: none">Freightliner® S2RV ChassisTwo-wheel DriveCummins® B6.7 360 HP Diesel Engine with 800 lb-ft Torque ¹185-Amp AlternatorAllison® 3000 MH 6-speed Automatic Transmission with Lock-up Torque ConverterFront and Rear 275/80 R22.5 TiresHydraulic Leveling Jacks</div><div><ul style="list-style-type: none">(2) 12-Volt Flooded Lead-Acid Chassis BatteriesRear Air Suspension with Manual Dump ValveSachs® Front Suspension Shock AbsorbersEaton Tractech NoSPIN® DifferentialFront RadiatorFull Air Brake System with Automatic Slack Adjusters</div><div><ul style="list-style-type: none">Heated Air Tanks with Auto Drain ValveSingle Stage Variable Geometry Turbocharger (VGT) Engine BrakeManual Parking BrakeCruise ControlAutomatic Traction ControlRear Stabilizer BarTire Inflation Kit with Quick Disconnect Fitting</div></div>			
CHASSIS AND DRIVETRAIN OPTIONS			
Wheels	Aluminum Wheels	38 AB	38 BB
	Black Aluminum Wheels NEW	O	O

¹ Peak horsepower achieved at 2,600 RPM. Peak torque achieved at 1,800 RPM.

ELECTRICAL			
<div><div><ul style="list-style-type: none">Spyder Controls Multiplex System Featuring App Compatibility8.0-Kilowatt Onan® Quiet Diesel Generator2,000-Watt Pure Sine Wave Inverter with Auto-Gen StartExtraordinaire™ Air Conditioning System</div><div><ul style="list-style-type: none">(2) 15,000-BTU Air Conditioners with Heat Pumps50-Amp Shore Power with Powered Retract ReelHD Over-the-air AntennaPark Cable and Ground Satellite Hook-up12-Volt Breaker Panel12-Volt Disconnect Switch</div><div><ul style="list-style-type: none">Rotary Disconnect Switches for House Batteries, Chassis Batteries, and InverterGround Fault Circuit Interrupter (GFCI) Outlets at Galley, Lavatories, and Sewer Bay110-Volt Exterior ReceptacleSurge Guard® Transfer SwitchUSB Receptacles Throughout Coach</div></div>			
ELECTRICAL OPTIONS			
Heating and Cooktop Power Source	Liquid Propane (LP) Coach ¹	38 AB	38 BB
	All-Electric Coach ²	S	S
House Batteries	(4) 6-Volt Extended Cycle AGM House Batteries	O	O
	(2) 12-Volt Lithium House Batteries	S	S
Heat Sources	(1) 35,000-BTU Ducted Furnace ³	O	O
	Aqua-Hot® 250D Heat Exchanger ⁴	D	D
Satellite	Prep for Satellite	S	S
	In-motion Satellite Dish	O	O
Solar Panels	Prep for Solar Panels ⁵	O	O
	(3) Solar Panels	O	O
Cellular Signal Booster NEW		O	O
Wi-Fi Booster UPDATED		O	O

¹ Propane is used to power the ducted furnaces, the water heater, and liquid propane cooktops.
² Replaces the ducted furnaces, the Truma AquaGo™ water heater, and liquid propane cooktops with an Aqua-Hot® heat exchanger and induction cooktops. Removes LPG tank. All-electric coaches still require diesel for the engine and either shore power or a generator to operate air conditioning.
³ Standard with LP coach option.
⁴ Replaces ducted furnaces when all-electric coach option is selected. Aqua-Hot® heat exchanger provides both heated air and water.
⁵ Includes docking ports for aftermarket solar panels.

PLUMBING			
<div><div><ul style="list-style-type: none">Aqua View Showermiser™Water FilterWater Pump Switch Access from Spyder System and Sewer Bay BoardWater PumpLow-point Water Drain Lines</div><div><ul style="list-style-type: none">Black Holding Tank Flush SystemGravity Water FillHeated Water and Holding Tank CompartmentTank Level Monitor System</div><div><ul style="list-style-type: none">Exterior Sewer Bay with Winterization System and Gravity Black and Grey Evacuation PortsFresh Water Hookup for City Water and Tank FillExterior Rinse Hose with Shower Head</div></div>			
PLUMBING OPTIONS			
Water Heater	Truma AquaGo™ Comfort Instant Water Heater ¹	38 AB	38 BB
	Aqua-Hot® 250D Heat Exchanger ²	D	D
Water Heater Bypass System ³		D	D

¹ Now controllable through the Truma control panel and the Spyder System control panels. Standard with LP coach option.
² Replaces Truma AquaGo™ Comfort instant water heater when all-electric coach option is selected. Aqua-Hot® heat exchanger provides both heated air and water.
³ Standard with LP coach option. Not necessary with all-electric coach option.

Specifications, Features, and Options (Cont'd)

KEY : S : Standard Feature | O : Optional Feature; Additional costs may apply | D : Dependent Feature; Feature is bundled with another optional feature | — : Not Available

EXTERIOR			
<ul style="list-style-type: none">• Full-body Paint with (3) Layers of Clear Coat• High Performance Protective Film on Front Cap and Select Areas• (1) Girard® Side-mounted Powered Patio Awning with Integrated LED Lighting• Girard® Slide-out Toppers• Side-swinging Exterior Storage Doors with Gas Shocks• Lockable Handles on Compartment Doors• Motion-sensor Lights in Cargo Bay	<ul style="list-style-type: none">• Pass-through Basement Storage• Flush-Style Tinted Windows with Tip-out Feature• Daytime Running Lights• Docking Lights• Exterior Patio Light• Fog Lights• Driver and Passenger Side Front Cap Exterior Entry Light• Heated, Electrically Adjustable Side-view Mirrors• Exterior TV with Soundbar	<ul style="list-style-type: none">• Fast Charge USB ports within Exterior TV Compartment• Manual Exterior TV Compartment Door• Front Door Entry System via Key Fob ¹• Deadbolt Front Entrance Lock• Entry Door Grab Handle• Automatic Double Entry Step• Mud Flaps• Concealed Air Horn• Single-colored Slide-out Endwalls• Limited Edition 50th Anniversary Decal	

EXTERIOR OPTIONS	38 AB	38 BB
Lippert™ On-The-Go™ Telescoping Ladder ² NEW	O	O

¹ Entry system does not include exterior Spyder keypad.
² All units will ship with a Lippert™ On-The-Go™ Prepped Receiver installed.

INTERIOR			
<ul style="list-style-type: none">• Handcrafted Cabinet Fascias and Doors with Concealed Hinges• (2) Flat-panel Televisions ¹• Solid Surface Galley Countertop• Treated Carpet in Slide-out Floors• Handcrafted Slide-out Fascia	<ul style="list-style-type: none">• Soft Touch Vinyl Ceiling• LED Lighting• Carbon Monoxide Detector• LPG Leak Detector• Smoke Detector	<ul style="list-style-type: none">• Fire Extinguisher• Solar and Privacy Shades• Soft-closing Drawer Slides• Powered Roof Vents• Interior Grab Handle at Entry Door	

INTERIOR OPTIONS		38 AB	38 BB
Treated Fabric Suites	Soft Suede	O	O
	Stoney Creek	O	O
Ultraleathers	Taupe Hill	O	O
	Trail	O	O
Cabinetry Stain	Sandstone	O	O
	Shadow	O	O
Floor Tiles	Sea Grass Luxury Vinyl Tile	S	S
Washer & Dryer	Prep for Washer and Dryer	S	S
	Side-by-side Washer and Dryer ² NEW	O	—
	Stacked Washer and Dryer	—	O
Bedroom Egress Door		O	O

¹ Located in living area and bedroom.
² Combo Washer-Dryer no longer available..

DRIVER'S COMPARTMENT			
<ul style="list-style-type: none">• Adjustable Driver and Passenger Seats• Adjustable Tilt and Telescoping Steering Column• Leather Wrapped Steering Wheel• Backlit Instrument Cluster• Generator Start/Stop Rocker Switch• Woodgrain Driver and Center Instrument Panel with Back-Lit Switches• Dual Dash Fans• USB Dash Receptacles• Cupholders on Driver and Passenger Side	<ul style="list-style-type: none">• Forward Roof-Mounted Console with Upper Storage Compartments• Driver and Passenger Map Lights• Single-motor Intermittent Windshield Wipers• Automatic LED Headlights• Trailer Marker Light Switch Integrated with Headlight Switch• Side-view Cameras• Color Back-up Camera with Monitor• AM/FM Stereo with Bluetooth, Dual USB Ports, Navigation, Apple Carplay/Android Auto• Ceiling Mounted Speakers	<ul style="list-style-type: none">• Colored Multi-Function Touch Screen Stereo with Rear Camera View Activated by Reverse and Side Camera View Activated by Turn Signal• In-dash Navigation System• Auxiliary Start Switch• Pull-cord for Air Horn• Carpeted Step Well• Powered Windows• Powered Door Locks• Privacy Curtain• Front Overhead Bunk with Privacy Curtains	

DRIVER'S COMPARTMENT OPTIONS	38 AB	38 BB
Front Overhead TV	O	O

DINETTE AND LIVING AREA		38 AB	38 BB
Driver Side Dinette	Ultraleather Booth Dinette-Sleeper ¹	S	—
	Dinette Bar	O	—
	Dinette Computer Workstation	O	—
	Ultraleather Booth Dinette-Sleeper with Lift TV ¹	—	S
	Dinette Bar with Lift TV	—	O
	Dinette Computer Workstation with Lift TV	—	O
Driver Side Furniture	Overhead Dinette Cabinets	S	—
	Ultraleather DE Sofa Bed ²	S	—
	Theater Seating	O	—
Passenger Side Furniture	Ultraleather Air Coil Sofa Bed with Lift TV ³	S	—
	Ultraleather Air Coil Sofa Bed ³	—	S
	Theater Seating	—	O

¹ Piece of furniture sleeps one comfortably. Now with lift-up seat storage access.
² Piece of furniture sleeps one comfortably.
³ Piece of furniture sleeps two comfortably.

KITCHEN			
<ul style="list-style-type: none">• Stainless Steel Convection Microwave with Exterior Venting	<ul style="list-style-type: none">• Stainless Steel Single Bowl Sink and Faucet with Built-in Sprayer• Galley Overhead Cabinets	<ul style="list-style-type: none">• Sliding Countertop Extension• LED Countertop Lighting• Solid Surface Galley Countertop	

KITCHEN OPTIONS	38 AB	38 BB
Cooking Appliances	Three-Burner Liquid Propane Cooktop ¹	D
	Two-Burner Induction Cooktop ²	D
Drawer-style Dishwasher	O	O

¹ Standard with LP coach option.
² Replaces three-burner liquid propane cooktop when all-electric coach option is selected.

BEDROOM			
<ul style="list-style-type: none">• Under Bed Storage• Bedside Windows• Overhead Cabinet with Headboard• Bed Comforter with Throw Pillows	<ul style="list-style-type: none">• Strategically-placed, Handcrafted Privacy Door• LED Reading Lights• Nightstand with Solid Surface Tops	<ul style="list-style-type: none">• Mounted Flat-panel TV• Centralized Entertainment Center• Ceiling Fan• Wardrobe with Drawers Underneath	

BEDROOM OPTIONS	38 AB	38 BB
Mattress	Memory Foam King Mattress (72" x 80")	S
	Memory Foam Queen Mattress (60" x 80")	O

BATHROOM			
<ul style="list-style-type: none">• (1) Porcelain Master Bathroom Sink• Solid Surface Lavatory Top• One-Piece Molded Fiberglass Shower	<ul style="list-style-type: none">• Shower Skylight• Shower LED Light with Sliding Cover• Towel and Toilet Paper Holders	<ul style="list-style-type: none">• Mirrored Medicine Cabinet• Roof Vent Fan• Base Cabinet	

BATHROOM OPTIONS	38 AB	38 BB
Number of Bathrooms	(1) Bathroom	S
	(1) Bathroom and (1) Half-bath	—
Toilet	(1) Gravity Flush Toilet	S
	(1) Electric Gravity Flush Toilet and (1) Macerator Toilet	—
		S

1

YEAR OR 12,000 MILES
LIMITED WARRANTY

5

YEARS OR 50,000 MILES
DELAMINATION
LIMITED WARRANTY

10

YEARS OR 50,000 MILES
CONSTRUCTION
LIMITED WARRANTY

1

YEAR COACH
ROADSIDE SERVICE

∞

ONGOING
CUSTOMER SUPPORT



TIFFIN
MOTORHOMES

FOR PARTS & SERVICE CALL 256.356.0261 OR VISIT TIFFINMOTORHOMES.COM | 105 2ND ST NW RED BAY, AL 35582  

©2021 Tiffin Motorhomes, Inc. Allegro®, Allegro Breeze®, Allegro RED®, Phaeton®, Allegro Bus®, Zephyr®, Wayfarer®, Roughing It Smoothly®, Open Road®, PowerGlide®, Pusher® and Cahaba® are registered trademarks of Tiffin Motorhomes, Inc. All rights reserved.
For all information concerning the limited warranty provided by Tiffin, please refer to the full written limited warranty set forth on the Tiffin website or held by our authorized dealerships. Please note, some interior furnishings not included.